

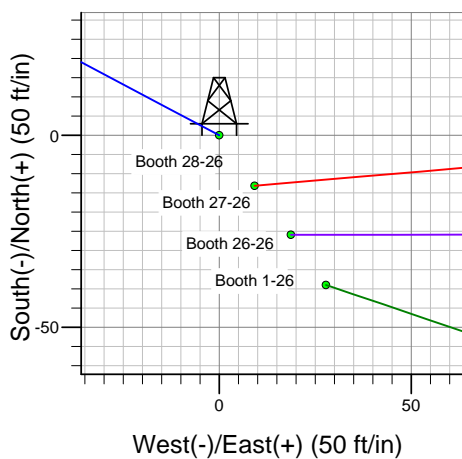
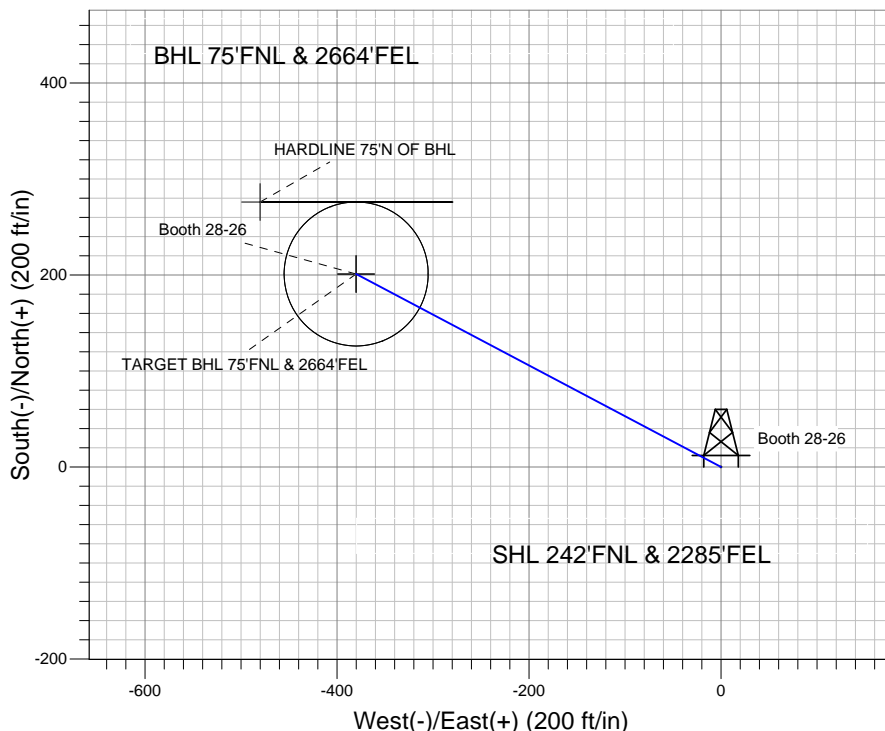
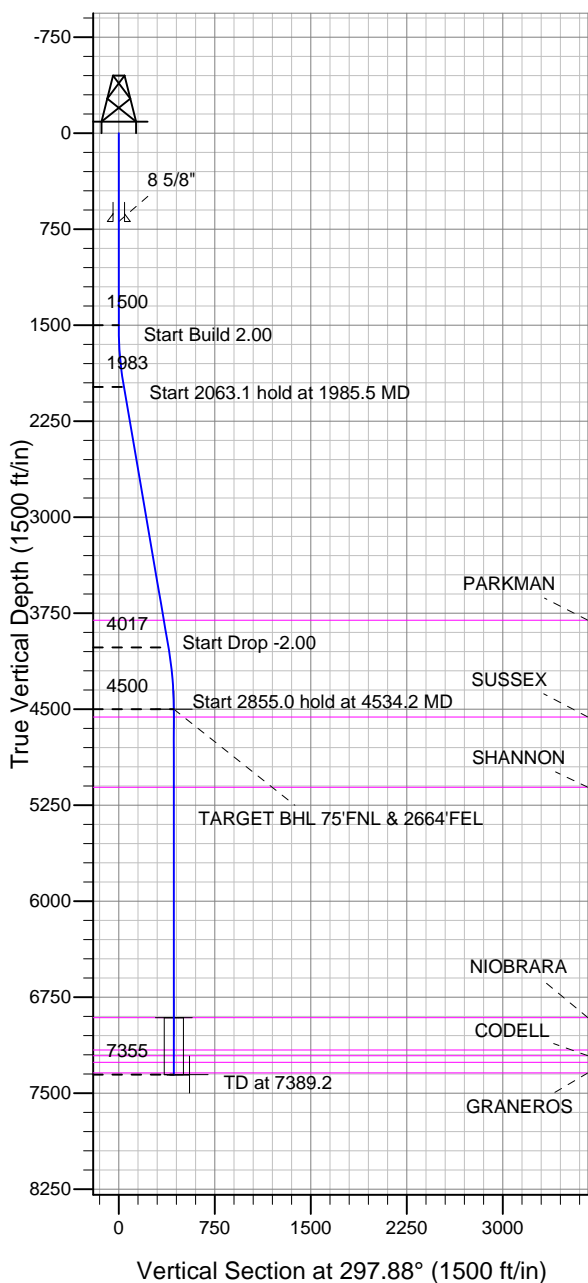
# ENSIGN

## Directional

### Well Name: Booth 28-26

Surface Location: Booth 4 Pad Sec.26-T7N-R65W  
 North American Datum 1983 US State Plane 1983 Colorado Northern Zone  
 Ground Elevation: 4891.0  
 +N/-S +E/-W Northing Easting Latitude Longitude Slot  
 0.0 0.0 1445211.55 3242092.77 40.552241 -104.628788  
 Original Well Elev WELL @ 4907.0ft (Original Well Elev)

## BAYSWATER EXPLORATION & PRODUCTION



Booth 4 Pad Sec.26-T7N-R65W  
 Booth 28-26  
 Plan #1 (5-17-12)  
 13:13, May 31 2012



Azimuths to True North  
 Magnetic North: 8.67°

Magnetic Field  
 Strength: 53123.6snT  
 Dip Angle: 67.16°  
 Date: 5/31/2012  
 Model: IGRF2010

### WELLBORE TARGET DETAILS (LAT/LONG)

Name	TVD	+N/-S	+E/-W	Latitude	Longitude	Shape
TARGET BHL 75'FNL & 2664'FEL	4500.0	201.1	-380.2	40.552793	-104.630156	Point
TARGET CIRCLE 75'FNL & 2664'FEL	6911.0	201.1	-380.2	40.552793	-104.630156	Circle (Radius: 75.0)
HARDLINE 75'N OF BHL	7355.0	276.1	-480.2	40.552999	-104.630516	Polygon

### SECTION DETAILS

Sec	MD	Inc	Azi	TVD	+N/-S	+E/-W	DLeg	TFace	VSec	Target
1	0.0	0.00	0.00	0.0	0.0	0.0	0.00	0.00	0.0	
2	1500.0	0.00	0.00	1500.0	0.0	0.0	0.00	0.00	0.0	
3	1985.5	9.71	297.88	1983.2	19.2	-36.3	2.00	297.88	41.0	
4	4048.7	9.71	297.88	4016.8	181.9	-343.9	0.00	0.00	389.0	
5	4534.2	0.00	0.00	4500.0	201.1	-380.2	2.00	180.00	430.1	TARGET BHL 75'FNL & 2664'FEL
6	7389.2	0.00	0.00	7355.0	201.1	-380.2	0.00	0.00	430.1	



## **Directional**

# **BAYSWATER EXPLORATION & PRODUCTION**

**SEC.26-T7N-R65W**

**Booth 4 Pad Sec.26-T7N-R65W**

**Booth 28-26**

**Wellbore #1**

**Plan: Plan #1 (5-17-12)**

## **Standard Planning Report**

**31 May, 2012**

<b>Database:</b>	Landmark	<b>Local Co-ordinate Reference:</b>	Well Booth 28-26
<b>Company:</b>	BAYSWATER EXPLORATION & PRODUCTION	<b>TVD Reference:</b>	WELL @ 4907.0ft (Original Well Elev)
<b>Project:</b>	SEC.26-T7N-R65W	<b>MD Reference:</b>	WELL @ 4907.0ft (Original Well Elev)
<b>Site:</b>	Booth 4 Pad Sec.26-T7N-R65W	<b>North Reference:</b>	True
<b>Well:</b>	Booth 28-26	<b>Survey Calculation Method:</b>	Minimum Curvature
<b>Wellbore:</b>	Wellbore #1		
<b>Design:</b>	Plan #1 (5-17-12)		

<b>Project</b>	SEC.26-T7N-R65W, Weld County, CO		
<b>Map System:</b>	US State Plane 1983	<b>System Datum:</b>	Mean Sea Level
<b>Geo Datum:</b>	North American Datum 1983		Using Well Reference Point
<b>Map Zone:</b>	Colorado Northern Zone		Using geodetic scale factor

<b>Site</b>	Booth 4 Pad Sec.26-T7N-R65W		
<b>Site Position:</b>		<b>Northing:</b>	1,445,211.57 ft
<b>From:</b>	Lat/Long	<b>Easting:</b>	3,242,092.77 ft
<b>Position Uncertainty:</b>	0.0 ft	<b>Slot Radius:</b>	"
		<b>Latitude:</b>	40.552241
		<b>Longitude:</b>	-104.628788
		<b>Grid Convergence:</b>	0.56 °

<b>Well</b>	Booth 28-26		
<b>Well Position</b>	<b>+N/-S</b>	0.0 ft	<b>Northing:</b> 1,445,211.55 ft
	<b>+E/-W</b>	0.0 ft	<b>Easting:</b> 3,242,092.77 ft
<b>Position Uncertainty</b>		0.0 ft	<b>Wellhead Elevation:</b> ft
			<b>Latitude:</b> 40.552241
			<b>Longitude:</b> -104.628788
			<b>Ground Level:</b> 4,891.0 ft

<b>Wellbore</b>	Wellbore #1				
<b>Magnetics</b>	<b>Model Name</b>	<b>Sample Date</b>	<b>Declination (°)</b>	<b>Dip Angle (°)</b>	<b>Field Strength (nT)</b>
	IGRF2010	5/31/2012	8.68	67.16	53,124

<b>Design</b>	Plan #1 (5-17-12)			
<b>Audit Notes:</b>				
<b>Version:</b>	<b>Phase:</b>	PROTOTYPE	<b>Tie On Depth:</b>	0.0
<b>Vertical Section:</b>	<b>Depth From (TVD) (ft)</b>	<b>+N/-S (ft)</b>	<b>+E/-W (ft)</b>	<b>Direction (°)</b>
	0.0	0.0	0.0	297.88

<b>Plan Sections</b>										
Measured Depth (ft)	Inclination (°)	Azimuth (°)	Vertical Depth (ft)	+N/-S (ft)	+E/-W (ft)	Dogleg Rate (°/100ft)	Build Rate (°/100ft)	Turn Rate (°/100ft)	TFO (°)	Target
0.0	0.00	0.00	0.0	0.0	0.0	0.00	0.00	0.00	0.00	
1,500.0	0.00	0.00	1,500.0	0.0	0.0	0.00	0.00	0.00	0.00	
1,985.5	9.71	297.88	1,983.2	19.2	-36.3	2.00	2.00	0.00	297.88	
4,048.7	9.71	297.88	4,016.8	181.9	-343.9	0.00	0.00	0.00	0.00	
4,534.2	0.00	0.00	4,500.0	201.1	-380.2	2.00	-2.00	0.00	180.00	TARGET BHL 75'FI
7,389.2	0.00	0.00	7,355.0	201.1	-380.2	0.00	0.00	0.00	0.00	

<b>Database:</b>	Landmark	<b>Local Co-ordinate Reference:</b>	Well Booth 28-26
<b>Company:</b>	BAYSWATER EXPLORATION & PRODUCTION	<b>TVD Reference:</b>	WELL @ 4907.0ft (Original Well Elev)
<b>Project:</b>	SEC.26-T7N-R65W	<b>MD Reference:</b>	WELL @ 4907.0ft (Original Well Elev)
<b>Site:</b>	Booth 4 Pad Sec.26-T7N-R65W	<b>North Reference:</b>	True
<b>Well:</b>	Booth 28-26	<b>Survey Calculation Method:</b>	Minimum Curvature
<b>Wellbore:</b>	Wellbore #1		
<b>Design:</b>	Plan #1 (5-17-12)		

Planned Survey									
Measured Depth (ft)	Inclination (°)	Azimuth (°)	Vertical Depth (ft)	+N-S (ft)	+E-W (ft)	Vertical Section (ft)	Dogleg Rate (°/100ft)	Build Rate (°/100ft)	Turn Rate (°/100ft)
0.0	0.00	0.00	0.0	0.0	0.0	0.0	0.00	0.00	0.00
40.0	0.00	0.00	40.0	0.0	0.0	0.0	0.00	0.00	0.00
80.0	0.00	0.00	80.0	0.0	0.0	0.0	0.00	0.00	0.00
120.0	0.00	0.00	120.0	0.0	0.0	0.0	0.00	0.00	0.00
160.0	0.00	0.00	160.0	0.0	0.0	0.0	0.00	0.00	0.00
200.0	0.00	0.00	200.0	0.0	0.0	0.0	0.00	0.00	0.00
240.0	0.00	0.00	240.0	0.0	0.0	0.0	0.00	0.00	0.00
280.0	0.00	0.00	280.0	0.0	0.0	0.0	0.00	0.00	0.00
320.0	0.00	0.00	320.0	0.0	0.0	0.0	0.00	0.00	0.00
360.0	0.00	0.00	360.0	0.0	0.0	0.0	0.00	0.00	0.00
400.0	0.00	0.00	400.0	0.0	0.0	0.0	0.00	0.00	0.00
440.0	0.00	0.00	440.0	0.0	0.0	0.0	0.00	0.00	0.00
480.0	0.00	0.00	480.0	0.0	0.0	0.0	0.00	0.00	0.00
520.0	0.00	0.00	520.0	0.0	0.0	0.0	0.00	0.00	0.00
560.0	0.00	0.00	560.0	0.0	0.0	0.0	0.00	0.00	0.00
600.0	0.00	0.00	600.0	0.0	0.0	0.0	0.00	0.00	0.00
640.0	0.00	0.00	640.0	0.0	0.0	0.0	0.00	0.00	0.00
680.0	0.00	0.00	680.0	0.0	0.0	0.0	0.00	0.00	0.00
690.0	0.00	0.00	690.0	0.0	0.0	0.0	0.00	0.00	0.00
8 5/8"									
720.0	0.00	0.00	720.0	0.0	0.0	0.0	0.00	0.00	0.00
760.0	0.00	0.00	760.0	0.0	0.0	0.0	0.00	0.00	0.00
800.0	0.00	0.00	800.0	0.0	0.0	0.0	0.00	0.00	0.00
840.0	0.00	0.00	840.0	0.0	0.0	0.0	0.00	0.00	0.00
880.0	0.00	0.00	880.0	0.0	0.0	0.0	0.00	0.00	0.00
920.0	0.00	0.00	920.0	0.0	0.0	0.0	0.00	0.00	0.00
960.0	0.00	0.00	960.0	0.0	0.0	0.0	0.00	0.00	0.00
1,000.0	0.00	0.00	1,000.0	0.0	0.0	0.0	0.00	0.00	0.00
1,040.0	0.00	0.00	1,040.0	0.0	0.0	0.0	0.00	0.00	0.00
1,080.0	0.00	0.00	1,080.0	0.0	0.0	0.0	0.00	0.00	0.00
1,120.0	0.00	0.00	1,120.0	0.0	0.0	0.0	0.00	0.00	0.00
1,160.0	0.00	0.00	1,160.0	0.0	0.0	0.0	0.00	0.00	0.00
1,200.0	0.00	0.00	1,200.0	0.0	0.0	0.0	0.00	0.00	0.00
1,240.0	0.00	0.00	1,240.0	0.0	0.0	0.0	0.00	0.00	0.00
1,280.0	0.00	0.00	1,280.0	0.0	0.0	0.0	0.00	0.00	0.00
1,320.0	0.00	0.00	1,320.0	0.0	0.0	0.0	0.00	0.00	0.00
1,360.0	0.00	0.00	1,360.0	0.0	0.0	0.0	0.00	0.00	0.00
1,400.0	0.00	0.00	1,400.0	0.0	0.0	0.0	0.00	0.00	0.00
1,440.0	0.00	0.00	1,440.0	0.0	0.0	0.0	0.00	0.00	0.00
1,480.0	0.00	0.00	1,480.0	0.0	0.0	0.0	0.00	0.00	0.00
1,500.0	0.00	0.00	1,500.0	0.0	0.0	0.0	0.00	0.00	0.00
1,520.0	0.40	297.88	1,520.0	0.0	-0.1	0.1	2.00	2.00	0.00
1,560.0	1.20	297.88	1,560.0	0.3	-0.6	0.6	2.00	2.00	0.00
1,600.0	2.00	297.88	1,600.0	0.8	-1.5	1.7	2.00	2.00	0.00
1,640.0	2.80	297.88	1,639.9	1.6	-3.0	3.4	2.00	2.00	0.00
1,680.0	3.60	297.88	1,679.9	2.6	-5.0	5.7	2.00	2.00	0.00
1,720.0	4.40	297.88	1,719.8	3.9	-7.5	8.4	2.00	2.00	0.00
1,760.0	5.20	297.88	1,759.6	5.5	-10.4	11.8	2.00	2.00	0.00
1,800.0	6.00	297.88	1,799.5	7.3	-13.9	15.7	2.00	2.00	0.00
1,840.0	6.80	297.88	1,839.2	9.4	-17.8	20.2	2.00	2.00	0.00
1,880.0	7.60	297.88	1,878.9	11.8	-22.2	25.2	2.00	2.00	0.00
1,920.0	8.40	297.88	1,918.5	14.4	-27.2	30.7	2.00	2.00	0.00
1,960.0	9.20	297.88	1,958.0	17.2	-32.6	36.9	2.00	2.00	0.00

<b>Database:</b>	Landmark	<b>Local Co-ordinate Reference:</b>	Well Booth 28-26
<b>Company:</b>	BAYSWATER EXPLORATION & PRODUCTION	<b>TVD Reference:</b>	WELL @ 4907.0ft (Original Well Elev)
<b>Project:</b>	SEC.26-T7N-R65W	<b>MD Reference:</b>	WELL @ 4907.0ft (Original Well Elev)
<b>Site:</b>	Booth 4 Pad Sec.26-T7N-R65W	<b>North Reference:</b>	True
<b>Well:</b>	Booth 28-26	<b>Survey Calculation Method:</b>	Minimum Curvature
<b>Wellbore:</b>	Wellbore #1		
<b>Design:</b>	Plan #1 (5-17-12)		

Planned Survey									
Measured Depth (ft)	Inclination (°)	Azimuth (°)	Vertical Depth (ft)	+N/-S (ft)	+E/-W (ft)	Vertical Section (ft)	Dogleg Rate (°/100ft)	Build Rate (°/100ft)	Turn Rate (°/100ft)
1,985.5	9.71	297.88	1,983.2	19.2	-36.3	41.0	2.00	2.00	0.00
2,000.0	9.71	297.88	1,997.5	20.3	-38.4	43.5	0.00	0.00	0.00
2,040.0	9.71	297.88	2,036.9	23.5	-44.4	50.2	0.00	0.00	0.00
2,080.0	9.71	297.88	2,076.3	26.6	-50.4	57.0	0.00	0.00	0.00
2,120.0	9.71	297.88	2,115.8	29.8	-56.3	63.7	0.00	0.00	0.00
2,160.0	9.71	297.88	2,155.2	33.0	-62.3	70.5	0.00	0.00	0.00
2,200.0	9.71	297.88	2,194.6	36.1	-68.3	77.2	0.00	0.00	0.00
2,240.0	9.71	297.88	2,234.0	39.3	-74.2	84.0	0.00	0.00	0.00
2,280.0	9.71	297.88	2,273.5	42.4	-80.2	90.7	0.00	0.00	0.00
2,320.0	9.71	297.88	2,312.9	45.6	-86.1	97.5	0.00	0.00	0.00
2,360.0	9.71	297.88	2,352.3	48.7	-92.1	104.2	0.00	0.00	0.00
2,400.0	9.71	297.88	2,391.7	51.9	-98.1	111.0	0.00	0.00	0.00
2,440.0	9.71	297.88	2,431.2	55.0	-104.0	117.7	0.00	0.00	0.00
2,480.0	9.71	297.88	2,470.6	58.2	-110.0	124.4	0.00	0.00	0.00
2,520.0	9.71	297.88	2,510.0	61.4	-116.0	131.2	0.00	0.00	0.00
2,560.0	9.71	297.88	2,549.4	64.5	-121.9	137.9	0.00	0.00	0.00
2,600.0	9.71	297.88	2,588.9	67.7	-127.9	144.7	0.00	0.00	0.00
2,640.0	9.71	297.88	2,628.3	70.8	-133.9	151.4	0.00	0.00	0.00
2,680.0	9.71	297.88	2,667.7	74.0	-139.8	158.2	0.00	0.00	0.00
2,720.0	9.71	297.88	2,707.2	77.1	-145.8	164.9	0.00	0.00	0.00
2,760.0	9.71	297.88	2,746.6	80.3	-151.7	171.7	0.00	0.00	0.00
2,800.0	9.71	297.88	2,786.0	83.4	-157.7	178.4	0.00	0.00	0.00
2,840.0	9.71	297.88	2,825.4	86.6	-163.7	185.2	0.00	0.00	0.00
2,880.0	9.71	297.88	2,864.9	89.7	-169.6	191.9	0.00	0.00	0.00
2,920.0	9.71	297.88	2,904.3	92.9	-175.6	198.7	0.00	0.00	0.00
2,960.0	9.71	297.88	2,943.7	96.1	-181.6	205.4	0.00	0.00	0.00
3,000.0	9.71	297.88	2,983.1	99.2	-187.5	212.2	0.00	0.00	0.00
3,040.0	9.71	297.88	3,022.6	102.4	-193.5	218.9	0.00	0.00	0.00
3,080.0	9.71	297.88	3,062.0	105.5	-199.5	225.7	0.00	0.00	0.00
3,120.0	9.71	297.88	3,101.4	108.7	-205.4	232.4	0.00	0.00	0.00
3,160.0	9.71	297.88	3,140.9	111.8	-211.4	239.1	0.00	0.00	0.00
3,200.0	9.71	297.88	3,180.3	115.0	-217.3	245.9	0.00	0.00	0.00
3,240.0	9.71	297.88	3,219.7	118.1	-223.3	252.6	0.00	0.00	0.00
3,280.0	9.71	297.88	3,259.1	121.3	-229.3	259.4	0.00	0.00	0.00
3,320.0	9.71	297.88	3,298.6	124.5	-235.2	266.1	0.00	0.00	0.00
3,360.0	9.71	297.88	3,338.0	127.6	-241.2	272.9	0.00	0.00	0.00
3,400.0	9.71	297.88	3,377.4	130.8	-247.2	279.6	0.00	0.00	0.00
3,440.0	9.71	297.88	3,416.8	133.9	-253.1	286.4	0.00	0.00	0.00
3,480.0	9.71	297.88	3,456.3	137.1	-259.1	293.1	0.00	0.00	0.00
3,520.0	9.71	297.88	3,495.7	140.2	-265.1	299.9	0.00	0.00	0.00
3,560.0	9.71	297.88	3,535.1	143.4	-271.0	306.6	0.00	0.00	0.00
3,600.0	9.71	297.88	3,574.5	146.5	-277.0	313.4	0.00	0.00	0.00
3,640.0	9.71	297.88	3,614.0	149.7	-282.9	320.1	0.00	0.00	0.00
3,680.0	9.71	297.88	3,653.4	152.9	-288.9	326.9	0.00	0.00	0.00
3,720.0	9.71	297.88	3,692.8	156.0	-294.9	333.6	0.00	0.00	0.00
3,760.0	9.71	297.88	3,732.3	159.2	-300.8	340.3	0.00	0.00	0.00
3,800.0	9.71	297.88	3,771.7	162.3	-306.8	347.1	0.00	0.00	0.00
3,834.8	9.71	297.88	3,806.0	165.1	-312.0	353.0	0.00	0.00	0.00
<b>PARKMAN</b>									
3,840.0	9.71	297.88	3,811.1	165.5	-312.8	353.8	0.00	0.00	0.00
3,880.0	9.71	297.88	3,850.5	168.6	-318.7	360.6	0.00	0.00	0.00
3,920.0	9.71	297.88	3,890.0	171.8	-324.7	367.3	0.00	0.00	0.00
3,960.0	9.71	297.88	3,929.4	174.9	-330.7	374.1	0.00	0.00	0.00

<b>Database:</b>	Landmark	<b>Local Co-ordinate Reference:</b>	Well Booth 28-26
<b>Company:</b>	BAYSWATER EXPLORATION & PRODUCTION	<b>TVD Reference:</b>	WELL @ 4907.0ft (Original Well Elev)
<b>Project:</b>	SEC.26-T7N-R65W	<b>MD Reference:</b>	WELL @ 4907.0ft (Original Well Elev)
<b>Site:</b>	Booth 4 Pad Sec.26-T7N-R65W	<b>North Reference:</b>	True
<b>Well:</b>	Booth 28-26	<b>Survey Calculation Method:</b>	Minimum Curvature
<b>Wellbore:</b>	Wellbore #1		
<b>Design:</b>	Plan #1 (5-17-12)		

Planned Survey									
Measured Depth (ft)	Inclination (°)	Azimuth (°)	Vertical Depth (ft)	+N-S (ft)	+E-W (ft)	Vertical Section (ft)	Dogleg Rate (°/100ft)	Build Rate (°/100ft)	Turn Rate (°/100ft)
4,000.0	9.71	297.88	3,968.8	178.1	-336.6	380.8	0.00	0.00	0.00
4,040.0	9.71	297.88	4,008.2	181.2	-342.6	387.6	0.00	0.00	0.00
4,048.7	9.71	297.88	4,016.8	181.9	-343.9	389.0	0.00	0.00	0.00
4,080.0	9.08	297.88	4,047.7	184.3	-348.4	394.2	2.00	-2.00	0.00
4,120.0	8.28	297.88	4,087.2	187.2	-353.7	400.2	2.00	-2.00	0.00
4,160.0	7.48	297.88	4,126.9	189.7	-358.6	405.7	2.00	-2.00	0.00
4,200.0	6.68	297.88	4,166.6	192.0	-362.9	410.6	2.00	-2.00	0.00
4,240.0	5.88	297.88	4,206.3	194.1	-366.8	415.0	2.00	-2.00	0.00
4,280.0	5.08	297.88	4,246.1	195.9	-370.2	418.8	2.00	-2.00	0.00
4,320.0	4.28	297.88	4,286.0	197.4	-373.1	422.1	2.00	-2.00	0.00
4,360.0	3.48	297.88	4,325.9	198.7	-375.5	424.8	2.00	-2.00	0.00
4,400.0	2.68	297.88	4,365.8	199.7	-377.4	426.9	2.00	-2.00	0.00
4,440.0	1.88	297.88	4,405.8	200.4	-378.8	428.5	2.00	-2.00	0.00
4,480.0	1.08	297.88	4,445.8	200.9	-379.7	429.6	2.00	-2.00	0.00
4,520.0	0.28	297.88	4,485.8	201.1	-380.1	430.0	2.00	-2.00	0.00
4,534.2	0.00	0.00	4,500.0	201.1	-380.2	430.1	2.00	-2.00	437.40
TARGET BHL 75'FNL & 2664'FEL									
4,560.0	0.00	0.00	4,525.8	201.1	-380.2	430.1	0.00	0.00	0.00
4,595.2	0.00	0.00	4,561.0	201.1	-380.2	430.1	0.00	0.00	0.00
SUSSEX									
4,600.0	0.00	0.00	4,565.8	201.1	-380.2	430.1	0.00	0.00	0.00
4,640.0	0.00	0.00	4,605.8	201.1	-380.2	430.1	0.00	0.00	0.00
4,680.0	0.00	0.00	4,645.8	201.1	-380.2	430.1	0.00	0.00	0.00
4,720.0	0.00	0.00	4,685.8	201.1	-380.2	430.1	0.00	0.00	0.00
4,760.0	0.00	0.00	4,725.8	201.1	-380.2	430.1	0.00	0.00	0.00
4,800.0	0.00	0.00	4,765.8	201.1	-380.2	430.1	0.00	0.00	0.00
4,840.0	0.00	0.00	4,805.8	201.1	-380.2	430.1	0.00	0.00	0.00
4,880.0	0.00	0.00	4,845.8	201.1	-380.2	430.1	0.00	0.00	0.00
4,920.0	0.00	0.00	4,885.8	201.1	-380.2	430.1	0.00	0.00	0.00
4,960.0	0.00	0.00	4,925.8	201.1	-380.2	430.1	0.00	0.00	0.00
5,000.0	0.00	0.00	4,965.8	201.1	-380.2	430.1	0.00	0.00	0.00
5,040.0	0.00	0.00	5,005.8	201.1	-380.2	430.1	0.00	0.00	0.00
5,080.0	0.00	0.00	5,045.8	201.1	-380.2	430.1	0.00	0.00	0.00
5,120.0	0.00	0.00	5,085.8	201.1	-380.2	430.1	0.00	0.00	0.00
5,145.2	0.00	0.00	5,111.0	201.1	-380.2	430.1	0.00	0.00	0.00
SHANNON									
5,160.0	0.00	0.00	5,125.8	201.1	-380.2	430.1	0.00	0.00	0.00
5,200.0	0.00	0.00	5,165.8	201.1	-380.2	430.1	0.00	0.00	0.00
5,240.0	0.00	0.00	5,205.8	201.1	-380.2	430.1	0.00	0.00	0.00
5,280.0	0.00	0.00	5,245.8	201.1	-380.2	430.1	0.00	0.00	0.00
5,320.0	0.00	0.00	5,285.8	201.1	-380.2	430.1	0.00	0.00	0.00
5,360.0	0.00	0.00	5,325.8	201.1	-380.2	430.1	0.00	0.00	0.00
5,400.0	0.00	0.00	5,365.8	201.1	-380.2	430.1	0.00	0.00	0.00
5,440.0	0.00	0.00	5,405.8	201.1	-380.2	430.1	0.00	0.00	0.00
5,480.0	0.00	0.00	5,445.8	201.1	-380.2	430.1	0.00	0.00	0.00
5,520.0	0.00	0.00	5,485.8	201.1	-380.2	430.1	0.00	0.00	0.00
5,560.0	0.00	0.00	5,525.8	201.1	-380.2	430.1	0.00	0.00	0.00
5,600.0	0.00	0.00	5,565.8	201.1	-380.2	430.1	0.00	0.00	0.00
5,640.0	0.00	0.00	5,605.8	201.1	-380.2	430.1	0.00	0.00	0.00
5,680.0	0.00	0.00	5,645.8	201.1	-380.2	430.1	0.00	0.00	0.00
5,720.0	0.00	0.00	5,685.8	201.1	-380.2	430.1	0.00	0.00	0.00
5,760.0	0.00	0.00	5,725.8	201.1	-380.2	430.1	0.00	0.00	0.00
5,800.0	0.00	0.00	5,765.8	201.1	-380.2	430.1	0.00	0.00	0.00

<b>Database:</b>	Landmark	<b>Local Co-ordinate Reference:</b>	Well Booth 28-26
<b>Company:</b>	BAYSWATER EXPLORATION & PRODUCTION	<b>TVD Reference:</b>	WELL @ 4907.0ft (Original Well Elev)
<b>Project:</b>	SEC.26-T7N-R65W	<b>MD Reference:</b>	WELL @ 4907.0ft (Original Well Elev)
<b>Site:</b>	Booth 4 Pad Sec.26-T7N-R65W	<b>North Reference:</b>	True
<b>Well:</b>	Booth 28-26	<b>Survey Calculation Method:</b>	Minimum Curvature
<b>Wellbore:</b>	Wellbore #1		
<b>Design:</b>	Plan #1 (5-17-12)		

Planned Survey									
Measured Depth (ft)	Inclination (°)	Azimuth (°)	Vertical Depth (ft)	+N-S (ft)	+E-W (ft)	Vertical Section (ft)	Dogleg Rate (°/100ft)	Build Rate (°/100ft)	Turn Rate (°/100ft)
5,840.0	0.00	0.00	5,805.8	201.1	-380.2	430.1	0.00	0.00	0.00
5,880.0	0.00	0.00	5,845.8	201.1	-380.2	430.1	0.00	0.00	0.00
5,920.0	0.00	0.00	5,885.8	201.1	-380.2	430.1	0.00	0.00	0.00
5,960.0	0.00	0.00	5,925.8	201.1	-380.2	430.1	0.00	0.00	0.00
6,000.0	0.00	0.00	5,965.8	201.1	-380.2	430.1	0.00	0.00	0.00
6,040.0	0.00	0.00	6,005.8	201.1	-380.2	430.1	0.00	0.00	0.00
6,080.0	0.00	0.00	6,045.8	201.1	-380.2	430.1	0.00	0.00	0.00
6,120.0	0.00	0.00	6,085.8	201.1	-380.2	430.1	0.00	0.00	0.00
6,160.0	0.00	0.00	6,125.8	201.1	-380.2	430.1	0.00	0.00	0.00
6,200.0	0.00	0.00	6,165.8	201.1	-380.2	430.1	0.00	0.00	0.00
6,240.0	0.00	0.00	6,205.8	201.1	-380.2	430.1	0.00	0.00	0.00
6,280.0	0.00	0.00	6,245.8	201.1	-380.2	430.1	0.00	0.00	0.00
6,320.0	0.00	0.00	6,285.8	201.1	-380.2	430.1	0.00	0.00	0.00
6,360.0	0.00	0.00	6,325.8	201.1	-380.2	430.1	0.00	0.00	0.00
6,400.0	0.00	0.00	6,365.8	201.1	-380.2	430.1	0.00	0.00	0.00
6,440.0	0.00	0.00	6,405.8	201.1	-380.2	430.1	0.00	0.00	0.00
6,480.0	0.00	0.00	6,445.8	201.1	-380.2	430.1	0.00	0.00	0.00
6,520.0	0.00	0.00	6,485.8	201.1	-380.2	430.1	0.00	0.00	0.00
6,560.0	0.00	0.00	6,525.8	201.1	-380.2	430.1	0.00	0.00	0.00
6,600.0	0.00	0.00	6,565.8	201.1	-380.2	430.1	0.00	0.00	0.00
6,640.0	0.00	0.00	6,605.8	201.1	-380.2	430.1	0.00	0.00	0.00
6,680.0	0.00	0.00	6,645.8	201.1	-380.2	430.1	0.00	0.00	0.00
6,720.0	0.00	0.00	6,685.8	201.1	-380.2	430.1	0.00	0.00	0.00
6,760.0	0.00	0.00	6,725.8	201.1	-380.2	430.1	0.00	0.00	0.00
6,800.0	0.00	0.00	6,765.8	201.1	-380.2	430.1	0.00	0.00	0.00
6,840.0	0.00	0.00	6,805.8	201.1	-380.2	430.1	0.00	0.00	0.00
6,880.0	0.00	0.00	6,845.8	201.1	-380.2	430.1	0.00	0.00	0.00
6,920.0	0.00	0.00	6,885.8	201.1	-380.2	430.1	0.00	0.00	0.00
6,945.2	0.00	0.00	6,911.0	201.1	-380.2	430.1	0.00	0.00	0.00
NIOBRARA - TARGET CIRCLE 75'FNL & 2664'FEL									
6,960.0	0.00	0.00	6,925.8	201.1	-380.2	430.1	0.00	0.00	0.00
7,000.0	0.00	0.00	6,965.8	201.1	-380.2	430.1	0.00	0.00	0.00
7,040.0	0.00	0.00	7,005.8	201.1	-380.2	430.1	0.00	0.00	0.00
7,080.0	0.00	0.00	7,045.8	201.1	-380.2	430.1	0.00	0.00	0.00
7,120.0	0.00	0.00	7,085.8	201.1	-380.2	430.1	0.00	0.00	0.00
7,160.0	0.00	0.00	7,125.8	201.1	-380.2	430.1	0.00	0.00	0.00
7,197.2	0.00	0.00	7,163.0	201.1	-380.2	430.1	0.00	0.00	0.00
FORT HAYS									
7,200.0	0.00	0.00	7,165.8	201.1	-380.2	430.1	0.00	0.00	0.00
7,240.0	0.00	0.00	7,205.8	201.1	-380.2	430.1	0.00	0.00	0.00
7,241.2	0.00	0.00	7,207.0	201.1	-380.2	430.1	0.00	0.00	0.00
CODELL									
7,280.0	0.00	0.00	7,245.8	201.1	-380.2	430.1	0.00	0.00	0.00
7,293.2	0.00	0.00	7,259.0	201.1	-380.2	430.1	0.00	0.00	0.00
GREENHORN									
7,320.0	0.00	0.00	7,285.8	201.1	-380.2	430.1	0.00	0.00	0.00
7,360.0	0.00	0.00	7,325.8	201.1	-380.2	430.1	0.00	0.00	0.00
7,375.2	0.00	0.00	7,341.0	201.1	-380.2	430.1	0.00	0.00	0.00
GRANEROS									
7,389.2	0.00	0.00	7,355.0	201.1	-380.2	430.1	0.00	0.00	0.00
HARDLINE 75'N OF BHL									

<b>Database:</b>	Landmark	<b>Local Co-ordinate Reference:</b>	Well Booth 28-26
<b>Company:</b>	BAYSWATER EXPLORATION & PRODUCTION	<b>TVD Reference:</b>	WELL @ 4907.0ft (Original Well Elev)
<b>Project:</b>	SEC.26-T7N-R65W	<b>MD Reference:</b>	WELL @ 4907.0ft (Original Well Elev)
<b>Site:</b>	Booth 4 Pad Sec.26-T7N-R65W	<b>North Reference:</b>	True
<b>Well:</b>	Booth 28-26	<b>Survey Calculation Method:</b>	Minimum Curvature
<b>Wellbore:</b>	Wellbore #1		
<b>Design:</b>	Plan #1 (5-17-12)		

#### Casing Points

Measured Depth (ft)	Vertical Depth (ft)	Name	Casing Diameter (")	Hole Diameter (")
690.0	690.0	8 5/8"	8-5/8	12-1/4

#### Formations

Measured Depth (ft)	Vertical Depth (ft)	Name	Lithology	Dip (°)	Dip Direction (°)
3,834.8	3,806.0	PARKMAN		0.00	
4,595.2	4,561.0	SUSSEX		0.00	
5,145.2	5,111.0	SHANNON		0.00	
6,945.2	6,911.0	NIOBRARA		0.00	
7,197.2	7,163.0	FORT HAYS		0.00	
7,241.2	7,207.0	CODELL		0.00	
7,293.2	7,259.0	GREENHORN		0.00	
7,375.2	7,341.0	GRANEROS		0.00	





## **Directional**

# **BAYSWATER EXPLORATION & PRODUCTION**

**SEC.26-T7N-R65W**

**Booth 4 Pad Sec.26-T7N-R65W**

**Booth 28-26**

**Wellbore #1**

**Plan #1 (5-17-12)**

## **Anticollision Report**

**31 May, 2012**



Booth 4 Pad Sec.26-T7N-R65W - Booth 27-26 - Wellbore #1 - Plan #1 (5-17-12)													Offset Site Error:	0.0 ft
Survey Program: 0-MWD													Offset Well Error:	0.0 ft
Reference		Offset		Semi Major Axis			Distance							Warning
Measured Depth (ft)	Vertical Depth (ft)	Measured Depth (ft)	Vertical Depth (ft)	Reference (ft)	Offset (ft)	Highside Toolface (°)	Offset Wellbore Centre +N/-S (ft)	+E/-W (ft)	Between Centres (ft)	Between Ellipses (ft)	Minimum Separation (ft)	Separation Factor		
2,300.0	2,293.2	2,219.5	2,178.7	5.3	8.3	154.33	16.3	353.4	452.2	442.0	10.17	44.466		
2,400.0	2,391.7	2,311.2	2,267.3	5.6	8.8	154.77	18.3	376.8	492.0	481.4	10.65	46.182		
2,500.0	2,490.3	2,402.8	2,356.0	6.0	9.3	155.15	20.2	400.1	531.9	520.8	11.14	47.731		
2,600.0	2,588.9	2,494.5	2,444.6	6.3	9.7	155.47	22.2	423.5	571.8	560.1	11.64	49.135		
2,700.0	2,687.4	2,586.1	2,533.2	6.6	10.2	155.75	24.2	446.9	611.7	599.5	12.13	50.412		
2,800.0	2,786.0	2,677.8	2,621.8	7.0	10.7	155.99	26.2	470.2	651.6	638.9	12.63	51.578		
2,900.0	2,884.6	2,769.5	2,710.4	7.3	11.2	156.21	28.2	493.6	691.5	678.3	13.13	52.645		
3,000.0	2,983.1	2,861.1	2,799.0	7.7	11.7	156.40	30.2	516.9	731.4	717.7	13.64	53.626		
3,100.0	3,081.7	2,952.8	2,887.6	8.0	12.2	156.58	32.2	540.3	771.3	757.2	14.14	54.529		
3,200.0	3,180.3	3,044.5	2,976.3	8.4	12.7	156.73	34.2	563.6	811.2	796.6	14.65	55.363		
3,300.0	3,278.8	3,136.1	3,064.9	8.8	13.2	156.87	36.2	587.0	851.2	836.0	15.16	56.136		
3,400.0	3,377.4	3,227.8	3,153.5	9.1	13.7	157.00	38.2	610.3	891.1	875.4	15.67	56.854		
3,500.0	3,476.0	3,319.4	3,242.1	9.5	14.2	157.12	40.2	633.7	931.0	914.8	16.19	57.521		
3,600.0	3,574.5	3,411.1	3,330.7	9.9	14.7	157.23	42.2	657.1	971.0	954.3	16.70	58.144		
3,700.0	3,673.1	3,502.8	3,419.3	10.3	15.2	157.33	44.2	680.4	1,010.9	993.7	17.21	58.726		
3,800.0	3,771.7	3,594.4	3,508.0	10.6	15.7	157.42	46.2	703.8	1,050.9	1,033.1	17.73	59.271		
3,900.0	3,870.3	3,686.1	3,596.6	11.0	16.2	157.51	48.1	727.1	1,090.8	1,072.6	18.25	59.782		
4,000.0	3,968.8	3,777.8	3,685.2	11.4	16.7	157.58	50.1	750.5	1,130.7	1,112.0	18.76	60.262		
4,048.7	4,016.8	3,822.4	3,728.3	11.6	17.0	157.62	51.1	761.8	1,150.2	1,131.2	19.02	60.485		
4,100.0	4,067.5	3,869.6	3,774.0	11.7	17.2	157.82	52.1	773.9	1,170.3	1,151.0	19.33	60.529		
4,200.0	4,166.6	3,962.5	3,863.8	12.0	17.8	158.11	54.2	797.6	1,207.2	1,187.3	19.92	60.603		
4,300.0	4,266.1	4,056.6	3,954.7	12.2	18.3	158.32	56.2	821.5	1,241.1	1,220.7	20.48	60.590		
4,400.0	4,365.8	4,151.7	4,046.7	12.4	18.8	158.44	58.3	845.7	1,272.0	1,250.9	21.02	60.501		
4,500.0	4,465.8	4,247.7	4,139.5	12.6	19.3	158.47	60.4	870.2	1,299.7	1,278.2	21.54	60.346		
4,534.2	4,500.0	4,280.7	4,171.4	12.6	19.5	96.35	61.1	878.6	1,308.5	1,286.8	21.71	60.279		
4,600.0	4,565.8	4,344.3	4,232.9	12.7	19.8	96.21	62.5	894.8	1,325.0	1,303.0	22.01	60.203		
4,700.0	4,665.8	4,441.0	4,326.3	12.9	20.4	96.00	64.6	919.5	1,350.1	1,327.7	22.48	60.052		
4,800.0	4,765.8	4,537.7	4,419.8	13.1	20.9	95.80	66.7	944.1	1,375.3	1,352.3	22.96	59.907		
4,900.0	4,865.8	4,678.3	4,556.1	13.3	21.5	95.53	69.6	978.5	1,399.7	1,376.2	23.52	59.519		
5,000.0	4,965.8	4,868.6	4,742.9	13.4	22.2	95.26	72.7	1,015.0	1,418.7	1,394.5	24.14	58.771		
5,100.0	5,065.8	5,063.1	4,935.8	13.6	22.7	95.09	74.8	1,039.4	1,431.1	1,406.3	24.72	57.880		
5,200.0	5,165.8	5,260.1	5,132.4	13.8	23.0	95.01	75.8	1,050.8	1,436.8	1,411.5	25.27	56.866		
5,300.0	5,265.8	5,393.5	5,265.8	14.0	23.1	95.00	75.8	1,051.5	1,437.2	1,411.5	25.69	55.952		
5,400.0	5,365.8	5,493.5	5,365.8	14.1	23.2	95.00	75.8	1,051.5	1,437.2	1,411.1	26.06	55.149		
5,500.0	5,465.8	5,593.5	5,465.8	14.3	23.3	95.00	75.8	1,051.5	1,437.2	1,410.7	26.44	54.363		
5,600.0	5,565.8	5,693.5	5,565.8	14.5	23.5	95.00	75.8	1,051.5	1,437.2	1,410.4	26.81	53.596		
5,700.0	5,665.8	5,793.5	5,665.8	14.7	23.6	95.00	75.8	1,051.5	1,437.2	1,410.0	27.20	52.846		
5,800.0	5,765.8	5,893.5	5,765.8	14.9	23.7	95.00	75.8	1,051.5	1,437.2	1,409.6	27.58	52.113		
5,900.0	5,865.8	5,993.5	5,865.8	15.1	23.8	95.00	75.8	1,051.5	1,437.2	1,409.2	27.96	51.396		
6,000.0	5,965.8	6,093.5	5,965.8	15.3	23.9	95.00	75.8	1,051.5	1,437.2	1,408.8	28.35	50.696		
6,100.0	6,065.8	6,193.5	6,065.8	15.5	24.0	95.00	75.8	1,051.5	1,437.2	1,408.4	28.74	50.011		
6,200.0	6,165.8	6,293.5	6,165.8	15.6	24.1	95.00	75.8	1,051.5	1,437.2	1,408.0	29.13	49.342		
6,300.0	6,265.8	6,393.5	6,265.8	15.8	24.3	95.00	75.8	1,051.5	1,437.2	1,407.7	29.52	48.688		
6,400.0	6,365.8	6,493.5	6,365.8	16.0	24.4	95.00	75.8	1,051.5	1,437.2	1,407.3	29.91	48.048		
6,500.0	6,465.8	6,593.5	6,465.8	16.2	24.5	95.00	75.8	1,051.5	1,437.2	1,406.9	30.31	47.423		
6,600.0	6,565.8	6,693.5	6,565.8	16.4	24.6	95.00	75.8	1,051.5	1,437.2	1,406.5	30.70	46.811		
6,700.0	6,665.8	6,793.5	6,665.8	16.6	24.8	95.00	75.8	1,051.5	1,437.2	1,406.1	31.10	46.213		
6,800.0	6,765.8	6,893.5	6,765.8	16.8	24.9	95.00	75.8	1,051.5	1,437.2	1,405.7	31.50	45.628		
6,900.0	6,865.8	6,993.5	6,865.8	17.0	25.0	95.00	75.8	1,051.5	1,437.2	1,405.3	31.90	45.056		
7,000.0	6,965.8	7,093.5	6,965.8	17.2	25.2	95.00	75.8	1,051.5	1,437.2	1,404.9	32.30	44.496		
7,100.0	7,065.8	7,193.5	7,065.8	17.4	25.3	95.00	75.8	1,051.5	1,437.2	1,404.5	32.70	43.948		

<b>Company:</b>	BAYSWATER EXPLORATION & PRODUCTION	<b>Local Co-ordinate Reference:</b>	Well Booth 28-26
<b>Project:</b>	SEC.26-T7N-R65W	<b>TVD Reference:</b>	WELL @ 4907.0ft (Original Well Elev)
<b>Reference Site:</b>	Booth 4 Pad Sec.26-T7N-R65W	<b>MD Reference:</b>	WELL @ 4907.0ft (Original Well Elev)
<b>Site Error:</b>	0.0ft	<b>North Reference:</b>	True
<b>Reference Well:</b>	Booth 28-26	<b>Survey Calculation Method:</b>	Minimum Curvature
<b>Well Error:</b>	0.0ft	<b>Output errors are at</b>	2.00 sigma
<b>Reference Wellbore</b>	Wellbore #1	<b>Database:</b>	Landmark
<b>Reference Design:</b>	Plan #1 (5-17-12)	<b>Offset TVD Reference:</b>	Offset Datum

<b>Offset Design</b> Booth 4 Pad Sec.26-T7N-R65W - Booth 27-26 - Wellbore #1 - Plan #1 (5-17-12)												<b>Offset Site Error:</b>	0.0 ft
Survey Program: 0-MWD												<b>Offset Well Error:</b>	0.0 ft
Reference	Offset	Semi Major Axis		Distance									
Measured Depth (ft)	Vertical Depth (ft)	Measured Depth (ft)	Vertical Depth (ft)	Reference (ft)	Offset (ft)	Highside Toolface (°)	Offset Wellbore Centre +N/-S (ft)	+E/-W (ft)	Between Centres (ft)	Between Ellipses (ft)	Minimum Separation (ft)	Separation Factor	Warning
7,200.0	7,165.8	7,293.5	7,165.8	17.6	25.4	95.00	75.8	1,051.5	1,437.2	1,404.1	33.11	43.412	
7,300.0	7,265.8	7,393.5	7,265.8	17.8	25.6	95.00	75.8	1,051.5	1,437.2	1,403.7	33.51	42.888	
7,389.2	7,355.0	7,482.7	7,355.0	18.0	25.7	95.00	75.8	1,051.5	1,437.2	1,403.3	33.87	42.430	

<b>Company:</b>	BAYSWATER EXPLORATION & PRODUCTION	<b>Local Co-ordinate Reference:</b>	Well Booth 28-26
<b>Project:</b>	SEC.26-T7N-R65W	<b>TVD Reference:</b>	WELL @ 4907.0ft (Original Well Elev)
<b>Reference Site:</b>	Booth 4 Pad Sec.26-T7N-R65W	<b>MD Reference:</b>	WELL @ 4907.0ft (Original Well Elev)
<b>Site Error:</b>	0.0ft	<b>North Reference:</b>	True
<b>Reference Well:</b>	Booth 28-26	<b>Survey Calculation Method:</b>	Minimum Curvature
<b>Well Error:</b>	0.0ft	<b>Output errors are at</b>	2.00 sigma
<b>Reference Wellbore</b>	Wellbore #1	<b>Database:</b>	Landmark
<b>Reference Design:</b>	Plan #1 (5-17-12)	<b>Offset TVD Reference:</b>	Offset Datum

Reference Depths are relative to WELL @ 4907.0ft (Original Well Elev) Coordinates are relative to: Booth 28-26  
Offset Depths are relative to Offset Datum Coordinate System is US State Plane 1983, Colorado Northern Zone  
Central Meridian is -105.500000 ° Grid Convergence at Surface is: 0.56°



<b>Company:</b>	BAYSWATER EXPLORATION & PRODUCTION	<b>Local Co-ordinate Reference:</b>	Well Booth 28-26
<b>Project:</b>	SEC.26-T7N-R65W	<b>TVD Reference:</b>	WELL @ 4907.0ft (Original Well Elev)
<b>Reference Site:</b>	Booth 4 Pad Sec.26-T7N-R65W	<b>MD Reference:</b>	WELL @ 4907.0ft (Original Well Elev)
<b>Site Error:</b>	0.0ft	<b>North Reference:</b>	True
<b>Reference Well:</b>	Booth 28-26	<b>Survey Calculation Method:</b>	Minimum Curvature
<b>Well Error:</b>	0.0ft	<b>Output errors are at</b>	2.00 sigma
<b>Reference Wellbore</b>	Wellbore #1	<b>Database:</b>	Landmark
<b>Reference Design:</b>	Plan #1 (5-17-12)	<b>Offset TVD Reference:</b>	Offset Datum

Reference Depths are relative to WELL @ 4907.0ft (Original Well Elev) Coordinates are relative to: Booth 28-26  
Offset Depths are relative to Offset Datum Coordinate System is US State Plane 1983, Colorado Northern Zone  
Central Meridian is -105.500000 ° Grid Convergence at Surface is: 0.56°

