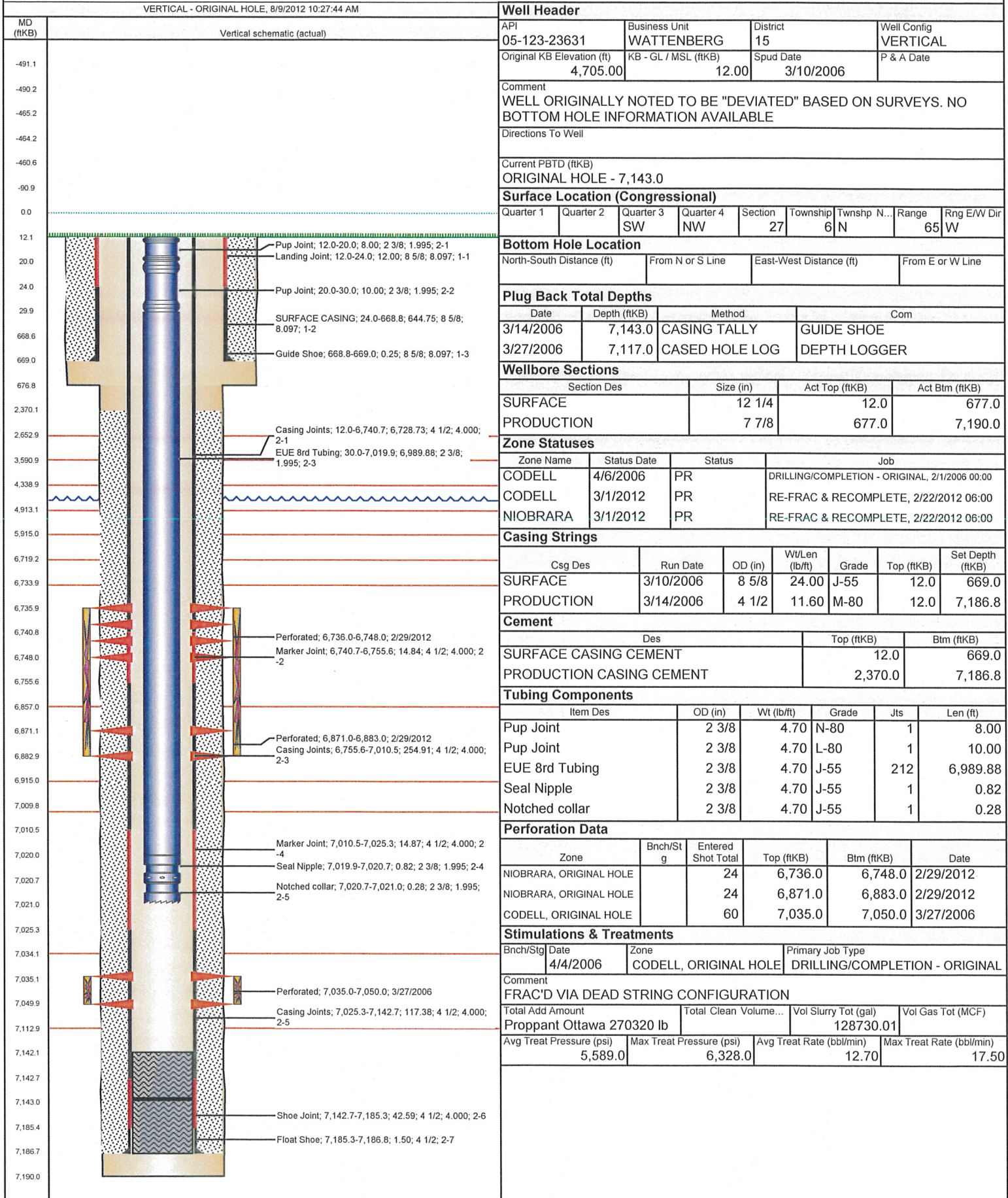


# Frac Wellbore Schematic Report

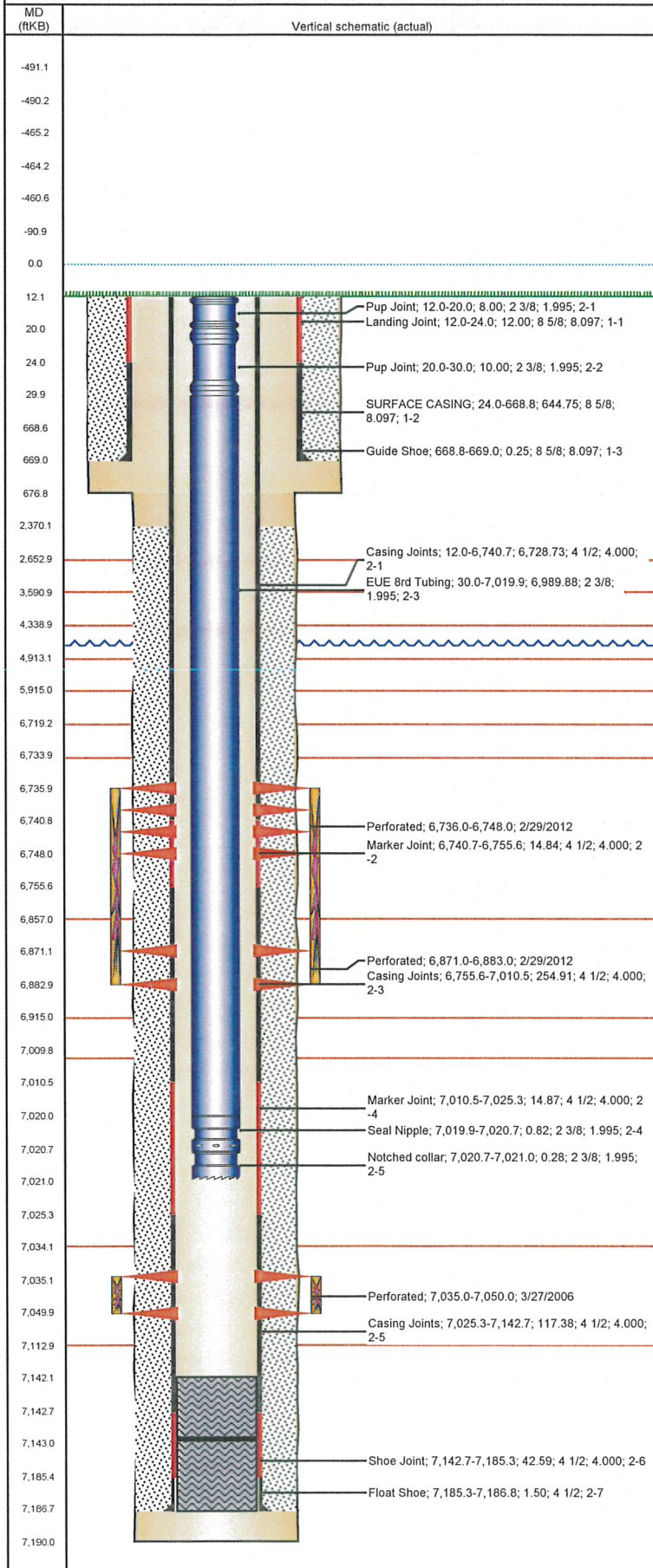
Well Name: SIAN E27-05





Well Name: SIAN E27-05

VERTICAL - ORIGINAL HOLE, 8/9/2012 10:27:44 AM



## Stimulations & Treatments

Brnch/Stg	Date	Zone	Primary Job Type
	2/29/2012	CODELL, ORIGINAL HOLE	RE-FRAC & RECOMPLETE
Comment (CODELL) WELL LOADED WITH 80 BBLS. INCREASED RATE TO 18 BPM DUE TO LEAKOFF. HAVING PROBLEMS WITH BLENDER DENSOMETER. HAD ISSUES WITH TUB BYPASS VALVE WHEN TRYING TO OPEN FOR ACID. AVERAGE VISCOSITY 25.6, PH 10.23, TEMP 69.9, POST 5-MIN. 3642.			
Total Add Amount		Total Clean Volume...	Vol Slurry Tot (gal)
Proppant Ottawa 231122 lb		129780.00	140238.00
Avg Treat Pressure (psi)	Max Treat Pressure (psi)	Avg Treat Rate (bbl/min)	Max Treat Rate (bbl/min)
3,969.0	4,141.0	18.60	19.30
Brnch/Stg	Date	Zone	Primary Job Type
	2/29/2012	NIOBRARA, ORIGINAL HOLE	RE-FRAC & RECOMPLETE
Comment (NIOBRARA) CREW HAD 15# OF B5 TO START NIOBRARA. 40# BUCKET WAS SEALED BUT HAD TRASH IN IT. STARTED JOB, BROKE FORMATION STARTED ISIP AND SHUT DOWN TILL MORE B5 ARRIVED ON LOCATION. DOWN FOR 1HR. ALL PUMPS KICKED OUT TWICE DURING FR PAD. PRESSURE WAS WELL BELOW 5000 PSI, WATER HAMMER EXCEEDED MAX PRESSURE 5216 PSI. PUMP TRUCKS WERE READING ABOUT 300 PSI HIGHER THEN TREATING PRESSURE. STAGED 20 BBLS EARLY INTO GEL PAD. RAN 20BBLS EXTRA ON GEL PAD. HAD TO KILL SCRFWEWS ON 3PSA. HYDRATION UNIT LOST ALL SUCTION. FLUSHED WELL, OPERATOR SWITCHED TO BACKUP SUCTION PUMP AND GOT HIS SUCTION BACK, SWITCHED BACK TO GEL PUMPED A WELL BORE OF CROSSLINK GEL, 1 WELLBORE OF 1 PSA, 1 WELLBORE OF 2 PSA AND CONTINUED ON 3 PSA TILL WE GOT THE CORRECT SAND VOLUME. NO OTHER ISSUES TO REPORT. AVERAGE VISCOSITY 18.4, PH 10.39, TEMP 68.9. POST 5-MIN. 3385.			
Total Add Amount		Total Clean Volume...	Vol Slurry Tot (gal)
Proppant Ottawa 260824 lb		166110.01	177870.00
Avg Treat Pressure (psi)	Max Treat Pressure (psi)	Avg Treat Rate (bbl/min)	Max Treat Rate (bbl/min)
4,380.0	45,003.0	48.40	48.60

## Other In Hole

Run Date	Des	OD (in)	Top (ftKB)	Btm (ftKB)

## Logs

Date	Type	Top (ftKB)	Btm (ftKB)
3/14/2006	COMPENSATED DENSITY	2,500.0	7,190.0
3/14/2006	INDUCTION	669.0	7,190.0
3/27/2006	CBL/CCL/GR	2,250.0	7,116.0