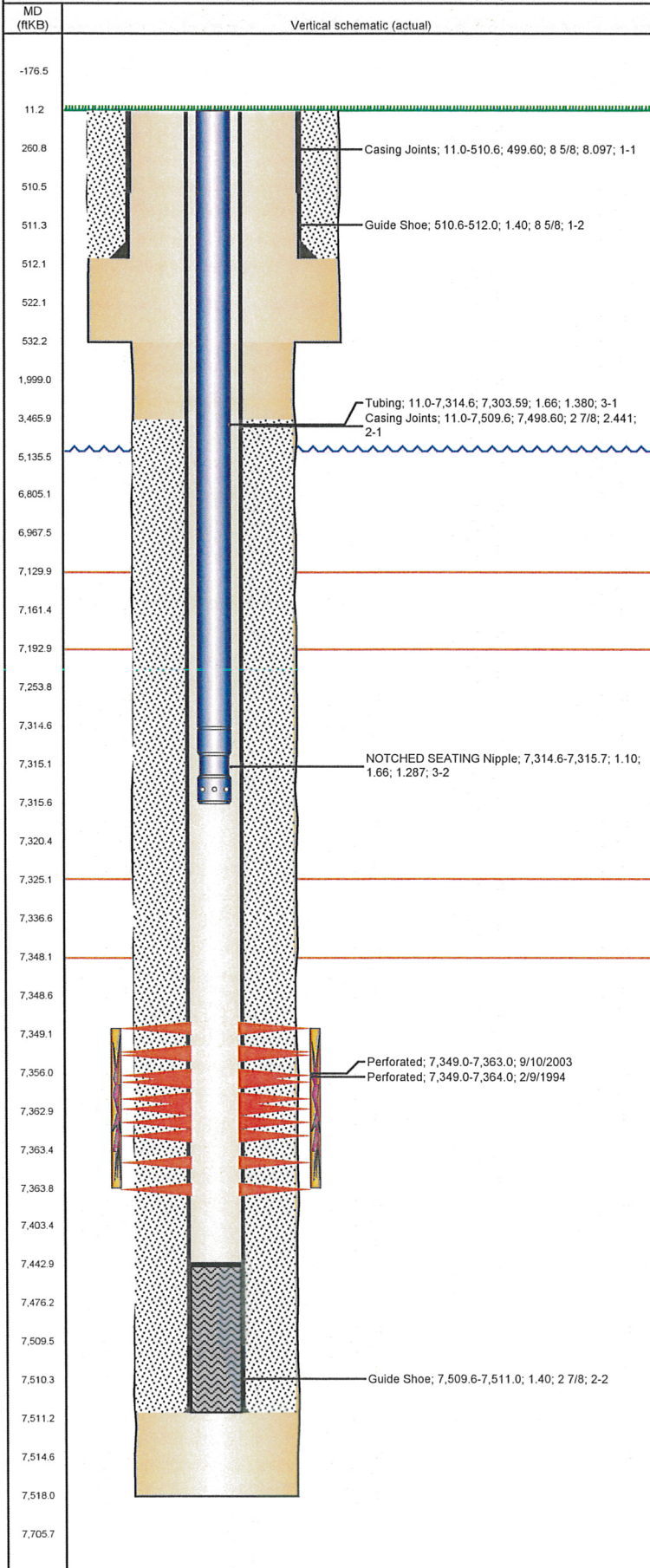


Well Name: KUIPERS RED V12-02

VERTICAL - ORIGINAL HOLE, 8/9/2012 9:03:54 AM



Well Header

API 05-123-17554	Business Unit WATTENBERG	District 15	Well Config VERTICAL
Original KB Elevation (ft) 4,842.00	KB - GL / MSL (ftKB) 11.00	Spud Date 1/26/1994	P & A Date

Comment

Directions To Well

CR 23 & CR 22 1/2, EAST 3/4 MILE, NORTH ALONG TREE LINE & ALONG WEST SIDE OF RIVER 3/4 MILE, WEST INTO.

Current PBTD (ftKB)

ORIGINAL HOLE - 7,443.0

Surface Location (Congressional)

Quarter 1	Quarter 2	Quarter 3	Quarter 4	Section	Township	Twship N...	Range	Rng E/W Dir
		NW	NE	12	2	N	67	W

Bottom Hole Location

North-South Distance (ft)	From N or S Line	East-West Distance (ft)	From E or W Line
---------------------------	------------------	-------------------------	------------------

Plug Back Total Depths

Date	Depth (ftKB)	Method	Com
2/2/1994	7,443.0	CASED HOLE LOG	DEPTH LOGGER ON CBL
4/7/2010	7,476.3	TAG	C/O WITH NSN

Wellbore Sections

Section Des	Size (in)	Act Top (ftKB)	Act Btm (ftKB)
SURFACE	12 1/4	11.0	532.0
PRODUCTION	7 7/8	532.0	7,518.0

Zone Statuses

Zone Name	Status Date	Status	Job
CODELL	4/20/1994	PR	DRILLING/COMPLETION - ORIGINAL, 1/26/1994 00:00
CODELL	10/27/2003	PR	RE-FRAC, 9/5/2003 00:00
CODELL	3/1/2012	PR	TRI-FRAC, 1/16/2012 06:00

Casing Strings

Csg Des	Run Date	OD (in)	Wt/Len (lb/ft)	Grade	Top (ftKB)	Set Depth (ftKB)
Surface	1/26/1994	8 5/8	24.00	?	11.0	512.0
Production	2/5/1994	2 7/8	6.50	N-80	11.0	7,511.0

Cement

Des	Top (ftKB)	Btm (ftKB)
SURFACE CASING CEMENT	11.0	512.0
PRODUCTION CASING CEMENT	3,466.0	7,511.0

Tubing Components

Item Des	OD (in)	Wt (lb/ft)	Grade	Jts	Len (ft)
Tubing	1.66	2.33	J-55	222	7,303.59
NOTCHED SEATING Nipple	1.66	2.75	J-55	1	1.10

Perforation Data

Zone	Bnch/St g	Entered Shot Total	Top (ftKB)	Btm (ftKB)	Date
CODELL, ORIGINAL HOLE		56	7,349.0	7,363.0	9/10/2003
CODELL, ORIGINAL HOLE		45	7,349.0	7,364.0	2/9/1994

Stimulations & Treatments

Bnch/Stg	Date	Zone	Primary Job Type
	2/10/1994	CODELL, ORIGINAL HOLE	DRILLING/COMPLETION - ORIGINAL

Comment

Total Add Amount Proppant 170440 lb	Total Clean Volume...	Vol Slurry Tot (gal) 60900.00	Vol Gas Tot (MCF)
Avg Treat Pressure (psi) 4,420.0	Max Treat Pressure (psi) 4,980.0	Avg Treat Rate (bbl/min) 16.00	Max Treat Rate (bbl/min) 16.00

Bnch/Stg	Date	Zone	Primary Job Type
	9/19/2003	CODELL, ORIGINAL HOLE	RE-FRAC

Comment

Total Add Amount Proppant Ottawa 247354 lb	Total Clean Volume...	Vol Slurry Tot (gal) 133854.01	Vol Gas Tot (MCF)
Avg Treat Pressure (psi) 4,572.0	Max Treat Pressure (psi) 4,910.0	Avg Treat Rate (bbl/min) 14.30	Max Treat Rate (bbl/min) 14.50

Well Name: KUIPERS RED V12-02

VERTICAL - ORIGINAL HOLE, 8/9/2012 9:03:54 AM

Stimulations & Treatments

Bnch/Stg	Date	Zone	Primary Job Type
	1/25/2012	CODELL, ORIGINAL HOLE	TRI-FRAC
Comment (CODELL TF): BREAK - 3911 PSI @ 4.5 BPM. ISIP - 3002, 5 MIN - 1800. FINAL ISIP - 3313, 5 MIN - 3049. AVG VISC - 28.8, AVG PH - 10.24, AVG TEMP - 67.13. TREATMENT WENT WELL.			
Total Add Amount		Total Clean Volume...	Vol Slurry Tot (gal)
Proppant Ottawa 247831.4 lb		128831.22	140237.17
Avg Treat Pressure (psi)	Max Treat Pressure (psi)	Avg Treat Rate (bbl/min)	Max Treat Rate (bbl/min)
4,995.0	5,232.0	16.98	17.44

Other In Hole

Run Date	Des	OD (in)	Top (ftKB)	Btm (ftKB)

Logs

Date	Type	Top (ftKB)	Btm (ftKB)
2/4/1994	COMPENSATED DENSITY	3,900.0	7,520.0
2/4/1994	INDUCTION	3,900.0	7,520.0
2/9/1994	CEMENT BOND	3,200.0	7,436.0

