

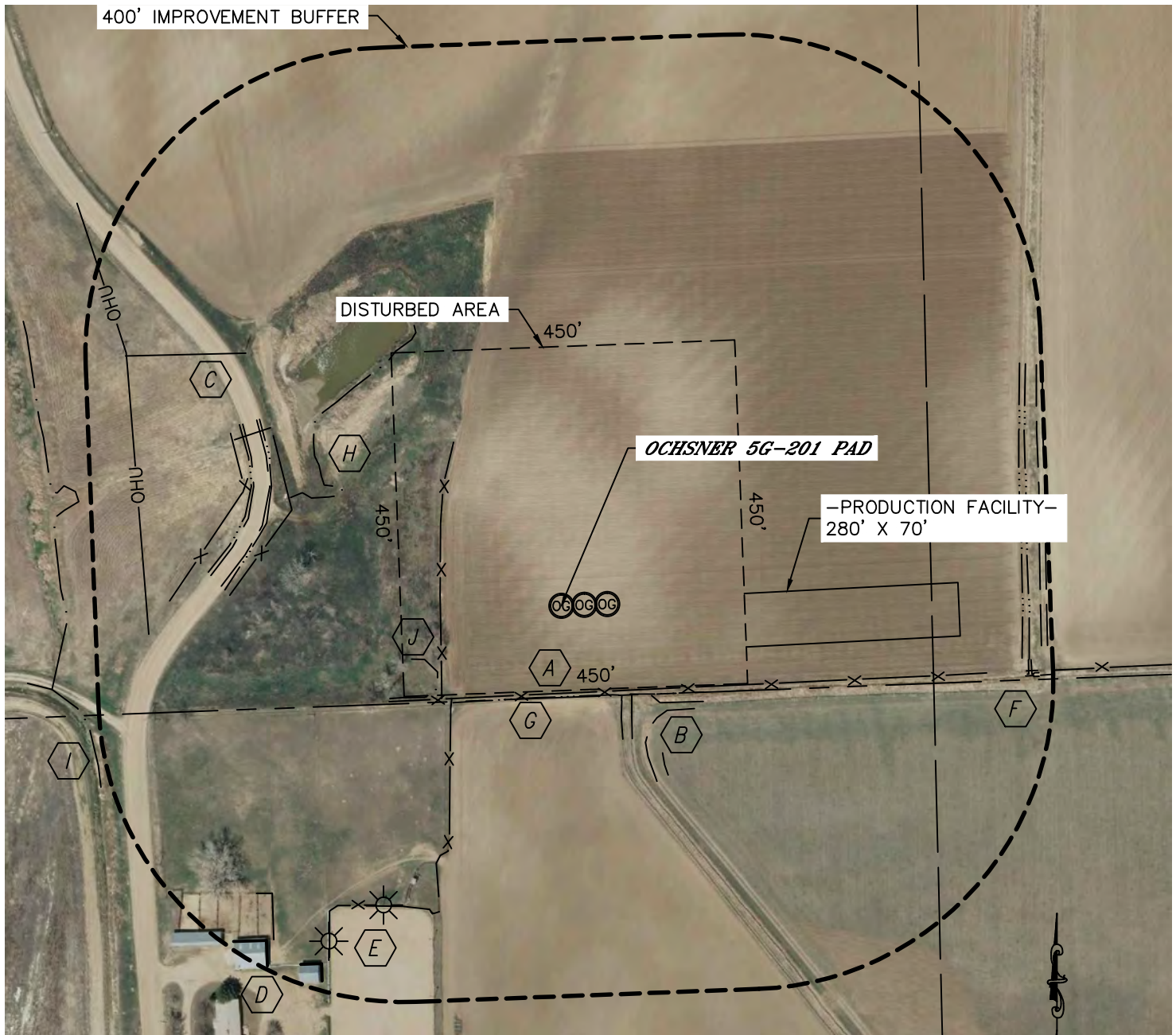


Lat40°, Inc. 1635 Foxtrail Drive, Suite 325 Loveland, CO 970-776-3321

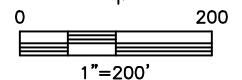
## LOCATION DRAWING

OCHSNER 5G-201 PAD

SECTION: 5  
TOWNSHIP: 6N  
RANGE: 67W



IMPROVEMENTS:  
(MEASURED FROM PROPOSED OCHSNER 5G-201 WELL LOCATION)



- |   |   |
|---|---|
| <b>A</b> FENCE 114' S, 158' W, 188' SW, 431' SW, 534' SW, 374' NW & 441' NW | <b>F</b> CONCRETE STRUCTURE 617' SE   |
| <b>B</b> FIELD ROAD 193' SE & 627' E<br>OLD COUNTY ROAD 15 405' NW          | <b>G</b> DITCH 119' S, 147' SE, 173' SE, 181' SE, 234' SE,<br>603' E, 612' E, 400' NW & 430' NW |
| <b>C</b> OVERHEAD UTILITY LINE 529' NW & 541' W                             | <b>H</b> POND 323' NW   |
| <b>D</b> BUILDING 539' & 564' SW  | <b>I</b> CANAL 641' SW  |
| <b>E</b> LIGHT POLE 456' & 534' SW  | <b>J</b> LOW AREA 183' SW   |

NEAREST: BUILDING 539' SW, PUBLIC ROAD 405' NW (OLD CR 15),  
ABOVE GROUND UTILITY 529' NW, RAILROAD 5280'+, PROPERTY LINE 120' S

DATE: 6/7/2012  
PROJECT#: 2012002