

**HALLIBURTON**

---

**WILLIAMS PRODUCTION RMT INC - EBUS**

---

TR 332-32-597 332-32-597  
TRAIL RIDGE  
Garfield County , Colorado

**Cement Surface Casing**

15-Aug-2011

**Job Site Documents**



## Cementing Job Summary

## *The Road to Excellence Starts with Safety*

Sold To #: 300721	Ship To #: 2865868	Quote #:	Sales Order #: 8322913
Customer: WILLIAMS PRODUCTION RMT INC - EBUS		Customer Rep: Oaks, Rick	
Well Name: TR 332-32-597	Well #: 332-32-597	API/UWI #: 05-045-19482	
Field: TRAIL RIDGE	City (SAP): PARACHUTE	County/Parish: Garfield	State: Colorado
Lat: N 39.575 deg. OR N 39 deg. 34 min. 28.556 secs.		Long: W 108.294 deg. OR W -109 deg. 42 min. 22.727 secs.	
Contractor: H&P 278	Rig/Platform Name/Num: H&P 278		
Job Purpose: Cement Surface Casing			
Well Type: Development Well		Job Type: Cement Surface Casing	
Sales Person: SCOTT, KYLE	Srvs Supervisor: PONDER, THOMAS	MBU ID Emp #: 427112	

### Job Personnel

HES Emp Name	Exp Hrs	Emp #	HES Emp Name	Exp Hrs	Emp #	HES Emp Name	Exp Hrs	Emp #
KEANE, JOHN Donovon	26	486519	PHILLIPS, MARK Bejar	26	445272	PONDER, THOMAS Lynn	26	427112
SALAZAR, PAUL Omar	26	445614	SANDALL, PATRICK J	26	491220	WILKISON, KEVIN Diverne	26	491065

### Equipment

HES Unit #	Distance-1 way	HES Unit #	Distance-1 way	HES Unit #	Distance-1 way	HES Unit #	Distance-1 way
10261036	90 mile	10567589C	90 mile	10804487	90 mile	10876398	90 mile
10995027	90 mile	11062234	90 mile	11259886	90 mile	11338213	90 mile
11410664	90 mile	11710582	90 mile	11749220	90 mile		

**Job Hours**

Date	On Location Hours	Operating Hours	Date	On Location Hours	Operating Hours	Date	On Location Hours	Operating Hours
08/14/2011	12	3	08/15/2011	14	7			

TOTAL		Total is the sum of each column separately
-------	--	--

## Job

### Job Times

Formation Name					Date	Time	Time Zone
Formation Depth (MD)	Top		Bottom		Called Out	14 - Aug - 2011	03:30 MST
Form Type		BHST			On Location	14 - Aug - 2011	12:00 MST
Job depth MD	2940. ft	Job Depth TVD	2940. ft		Job Started	14 - Aug - 2011	22:40 MST
Water Depth		Wk Ht Above Floor	2. ft		Job Completed	15 - Aug - 2011	12:19 MST
Perforation Depth (MD)	From		To		Departed Loc	15 - Aug - 2011	14:00 MST

## Well Data

Description	New / Used	Max pressure psig	Size in	ID in	Weight lbm/ft	Thread	Grade	Top MD ft	Bottom MD ft	Top TVD ft	Bottom TVD ft
OPE HOLE				14.75				.	2940.		
SURFACE CASING	Unknown		9.625	9.001	32.3		H-40	.	2940.		

Sales/Rental/3<sup>rd</sup> Party (HES)

Description	Qty	Qty uom	Depth	Supplier
PLUG,CMTG, TOP,9 5/8,HWE,8.16 MIN/9.06 MA	1	EA		

## Tools and Accessories

Type	Size	Qty	Make	Depth	Type	Size	Qty	Make	Depth	Type	Size	Qty	Make
Guide Shoe					Packer					Top Plug	9 5/8	1	HES
Float Shoe					Bridge Plug					Bottom Plug			
Float Collar					Retainer					SSR plug set			
Insert Float										Plug Container	9 5/8	1	HES
Stage Tool										Centralizers			

### Miscellaneous Materials

Gelling Agt	Conc	Surfactant	Conc	Acid Type	Qty	Conc	%
Treatment Fld	Conc	Inhibitor	Conc	Sand Type	Size	Qty	

### Fluid Data

Stage/Plug #: 1
-----------------



Fluid #	Stage Type	Fluid Name	Qty	Qty uom	Mixing Density lbm/gal	Yield ft <sup>3</sup> /sk	Mix Fluid Gal/sk	Rate bbl/min	Total Mix Fluid Gal/sk
1	Fresh Water		10.00	bbl	8.34	.0	.0	.0	
2	SUPER FLUSH - XLC	SUPERFLUSH-XLC - SBM (549694)	50.00	bbl	11.	.0	.0	.0	
3	Fresh Water		10.00	bbl	8.33	.0	.0	.0	
4	Lead Cement	EXTENDACEM (TM) SYSTEM (452981)	1200.0	sacks	12.3	2.23	12.21		12.21
	0.25 lbm	POLY-E-FLAKE (101216940)							
	0.3 %	STEELSEAL, 50 LB BAG (101236842)							
	1.5 lbm	PHENO SEAL MEDIUM, 40 LB BAG (101307743)							
	1.5 lbm	WALL-NUT COARSE - 50 LB BAG (201097)							
	12.21 Gal	FRESH WATER							
5	Tail Cement	EXTENDACEM (TM) SYSTEM (452981)	250.0	sacks	12.6	2.07	11.04		11.04
	0.25 lbm	POLY-E-FLAKE (101216940)							
	0.3 %	STEELSEAL, 50 LB BAG (101236842)							
	1.5 lbm	PHENO SEAL MEDIUM, 40 LB BAG (101307743)							
	1.5 lbm	WALL-NUT COARSE - 50 LB BAG (201097)							
	11.04 Gal	FRESH WATER							
6	Mud Displacement		228.00	bbl	8.9	.0	.0	.0	
7	SUPER FLUSH 100	SUPER FLUSH 100 - SBM (12191)	40.00	bbl	11.7	.0	.0	.0	
8	Top Out Cement	HALCEM (TM) SYSTEM (452986)	700.0	sacks	15.8	1.15	5.0		5.0
	5 Gal	FRESH WATER							
<b>Calculated Values</b>		<b>Pressures</b>		<b>Volumes</b>					
Displacement	228.1	Shut In: Instant		Lost Returns	870	Cement Slurry	568.8	Pad	
Top Of Cement	SURFACE	5 Min		Cement Returns	0	Actual Displacement	228.1	Treatment	
Frac Gradient		15 Min		Spacers	70	Load and Breakdown		Total Job	1012.4
<b>Rates</b>									
Circulating	0	Mixing	4	Displacement	4	Avg. Job	4		
Cement Left In Pipe	Amount	42 ft	Reason	Shoe Joint					
Frac Ring # 1 @	ID	Frac ring # 2 @	ID	Frac Ring # 3 @	ID	Frac Ring # 4 @	ID		
The Information Stated Herein Is Correct				Customer Representative Signature					

*The Road to Excellence Starts with Safety*

Sold To #: 300721	Ship To #: 2865868	Quote #:	Sales Order #: 8322913
Customer: WILLIAMS PRODUCTION RMT INC - EBUS	Customer Rep: Oaks, Rick		
Well Name: TR 332-32-597	Well #: 332-32-597	API/UWI #: 05-045-19482	
Field: TRAIL RIDGE	City (SAP): PARACHUTE	County/Parish: Garfield	State: Colorado
Legal Description:			
Lat: N 39.575 deg. OR N 39 deg. 34 min. 28.556 secs.		Long: W 108.294 deg. OR W -109 deg. 42 min. 22.727 secs.	
Contractor: H&P 278	Rig/Platform Name/Num: H&P 278		
Job Purpose: Cement Surface Casing	Ticket Amount:		
Well Type: Development Well	Job Type: Cement Surface Casing		
Sales Person: SCOTT, KYLE	Srv Supervisor: PONDER, THOMAS	MBU ID Emp #: 427112	

Activity Description	Date/Time	Cht #	Rate bbl/min	Volume bbl		Pressure psig		Comments
				Stage	Total	Tubing	Casing	
Call Out	08/14/2011 03:30							
Crew Leave Yard	08/14/2011 07:00							ALL HES PRESENT FOR PRE-CONVOY SAFETY HUDDLE
Arrive At Loc	08/14/2011 12:00							DISCUSSED WITH CUSTOMER REP ON WHAT WE WILL DO AS SOON AS PRIMARY JOB IS FINISHED, WITH OTHER CEMENTER ON LOCATION WE DECIDED THAT WE WOULD WAIT 4 HOURS BEFORE WE STARTED TOPPING OUT
Assessment Of Location Safety Meeting	08/14/2011 15:30							TD- 2940', TP- 2940.77', SJ- 42.05', MUD- 8.9 PPG, HOLE- 14 3/4", SURFACE CASING- 9 5/8" 32.3# H-40, CO REP USED ALL AIR HE HAD WHEN DRILLING AND NEVER SAW ANY RETURNS WHILE CIRCULATING, LOST RETURNS AFTER THEY REACHED 949'
Rig-Up Equipment	08/14/2011 16:00							1-550 PICKUP, 1-ELITE PUMP UNIT, 2- 660 FT3 BULK TRUCKS, 1- 1700FT3 STORAGE SILO, 1-2000 GAL TRANSPORT



Activity Description	Date/Time	Cht #	Rate bbl/min	Volume bbl		Pressure psig		Comments
				Stage	Total	Tubing	Casing	
Safety Meeting	08/14/2011 22:45							ALL HES PRESENT, RIG CREW PRESENT, RIG STARTED CIRCULATING ON BOTTOM @
Start Job	08/14/2011 23:13		2	2			26.0	FILL LINES
Test Lines	08/14/2011 23:15		0.1	0.1			4949.0	
Pump Spacer 1	08/14/2011 23:23		4	10			97.0	FRESH WATER
Pump Spacer 2	08/14/2011 23:25		4	50			110.0	SUPERFLUSH-XLC
Pump Spacer 1	08/14/2011 23:37		4	10			107.0	FRESH WATER
Pump Lead Cement	08/14/2011 23:43		8	476.6			418.0	1200 SKS 12.3 PPG 2.223 FT3/SK 12.21 GAL/SK, PUMPED 8 BPM UNTIL WE TURNED THE CORNER WITH CEMENT AND THEN SLOWED RATE TO 5 BPM AS PER CO REP REQUEST
Pump Tail Cement	08/15/2011 00:47		6	92.2				250 SKS 12.6 PPG 2.07 FT3/SK 11.04 GAL/SK
Shutdown	08/15/2011 01:02							
Drop Plug	08/15/2011 01:05							PLUG DROP VERIFIED VIA TATTLE TELL BY CUSTOMER REP
Pump Displacement	08/15/2011 01:07		4	228.2			384.0	FRESH WATER, WASHED UP ON TOP OF THE PLUG, BROUGHT RATE UP TO N10 BPM FOR 30 BBL TO HELP FLUSH OUT THE RESIDUE CEMENT
Bump Plug	08/15/2011 01:57		4	228.2			283.0	PLUG BUMPED
Check Floats	08/15/2011 01:59						883.0	FLOATS HELD, 1 BBL BACK TO THE DISPLACEMENT TANKS
Pump Water	08/15/2011 02:02		1.5	10			217.0	PUMP 10 BBL OF SUGAR WATER DOWN PARASITE STRING

Activity Description	Date/Time	Cht #	Rate bbl/min	Volume bbl		Pressure psig		Comments
				Stage	Total	Tubing	Casing	
Shutdown	08/15/2011 02:14							
End Job	08/15/2011 02:21							RIGGED UP TO CELLAR FOR TOP OUTS, HAD TO WAIT ON WELDER TO CUT CASING AND THEN ATTACH WELL HEAD
Start Job	08/15/2011 08:33							
Pump Water	08/15/2011 08:33		1	1			.0	PUMPED 1 BBL WATER TO MAKE SURE LINE WAS CLEAR
Other	08/15/2011 08:35							MIXED CEMENT
Pump Cement	08/15/2011 08:37		1.5	18			134.0	175 SKS 15.8 PPG 1.15 FT3/SK 5.0 GAL/SK, PUMPED 5 BBL SUPERFLUSH 100 DOWN BACKSIDE AT SAME TIME AS CEMENT ALONG WITH 4- 50# SK OF CALCIUM CHLORIDE IN THE BACKSIDE
Shutdown	08/15/2011 08:48							SUPERFLUSH CAME TO SURFACE, CUSTOMER REP SAID TO PUMP UNTIL CEMENT CAME TO SURFACE
Pump Cement	08/15/2011 08:49		2	17.8	35.8		65.0	CEMENT TO SURFACE WITH SUPERFLUSH 100
Shutdown	08/15/2011 08:55							
Pump Water	08/15/2011 09:00		0.5	1			3.0	PUMPED WATER BEHIND TO CLEAR LINE OF CEMENT
Shutdown	08/15/2011 09:02							
End Job	08/15/2011 09:03							RIGGED UP TO THE NEXT WELL TO TOP OUT
Start Job	08/15/2011 10:06							
Activity Description	Date/Time	Cht	Rate bbl/min	Volume bbl		Pressure psig		Comments

Sold To # : 300721

Ship To # : 2865868

Quote # :

Sales Order # :

8322913

SUMMIT Version: 7.2.27

Wednesday, August 17, 2011 08:56:00



## Cementing Job Log

Activity Description	Date/Time	#	Rate bbl/ min	Volume bbl Stage   Total	Pressure psig Tubing   Casing	Comments
Pump Cement	08/15/2011 10:06		2	35.8		175 SKS 15.8 PPG 1.15 FT3/SK 5.0 GAL/SK, PUMPED 5 BBL SUPERFLUSH 100 DOWN BACKSIDE AT SAME TIME AS CEMENT ALONG WITH 7- 50# SK OF CALCIUM CHLORIDE IN THE BACKSIDE
Shutdown	08/15/2011 10:28					CEMENT TO SURFACE
Other	08/15/2011 10:35					SWAP TO THE LAST WELL
Other	08/15/2011 10:39					MIX CEMENT
Pump Cement	08/15/2011 10:46		3	58.2		284 SKS 15.8 PPG 1.15 FT3/SK 5.0 GAL/SK, PUMPED 5 BBL SUPERFLUSH 100 DOWN BACKSIDE AT SAME TIME AS CEMENT ALONG WITH 4- 50# SK OF CALCIUM CHLORIDE IN THE BACKSIDE
Shutdown	08/15/2011 11:10					DID NOT GET CEMENT TO SURFACE, AS PER CUSTOMER REQUEST SENT FOR MORE TOP OUT CEMENT, AND WAITED FOR CEMENT TO SET UP ENOUGH FOR A GOOD BASE
End Job	08/15/2011 11:11					
Start Job	08/15/2011 12:13					
Pump Cement	08/15/2011 12:14		2	13.5		66 SKS 15.8 PPG 1.15 FT3/SK 5.0 GAL/SK, PUMPED 5 BBL SUPERFLUSH 100 DOWN BACKSIDE AT SAME TIME AS CEMENT
Shutdown	08/15/2011 12:19					CEMENT CAME TO SURFACE WITH 1 BBL CEMENT TO SPARE

Sold To # : 300721

Ship To # : 2865868

Quote # :

Sales Order # : 8322913

SUMMIT Version: 7.2.27

Wednesday, August 17, 2011 08:56:00

**HALLIBURTON**

***Cementing Job Log***

End Job	08/15/2011 12:19							THANK YOU FOR CHOOSING HALLIBURTON, THOMAS PONDER AND CREW
---------	---------------------	--	--	--	--	--	--	--

Sold To # : 300721

Ship To # :2865868

Quote # :

Sales Order # :

8322913

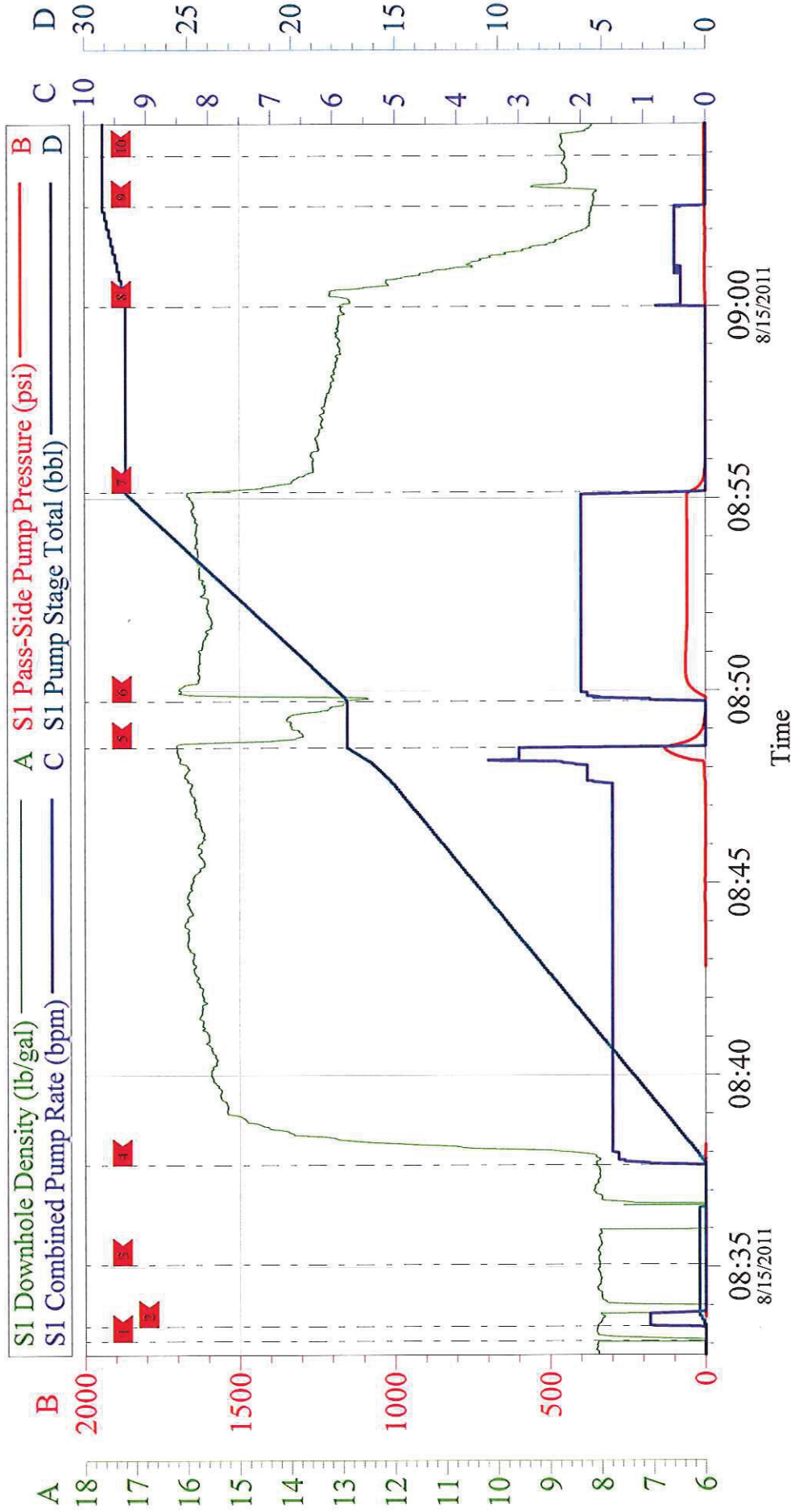
SUMMIT Version: 7.2.27

Wednesday, August 17, 2011 08:56:00



# WILLIAMS

## TR 332-32-597, TOP OUT 1

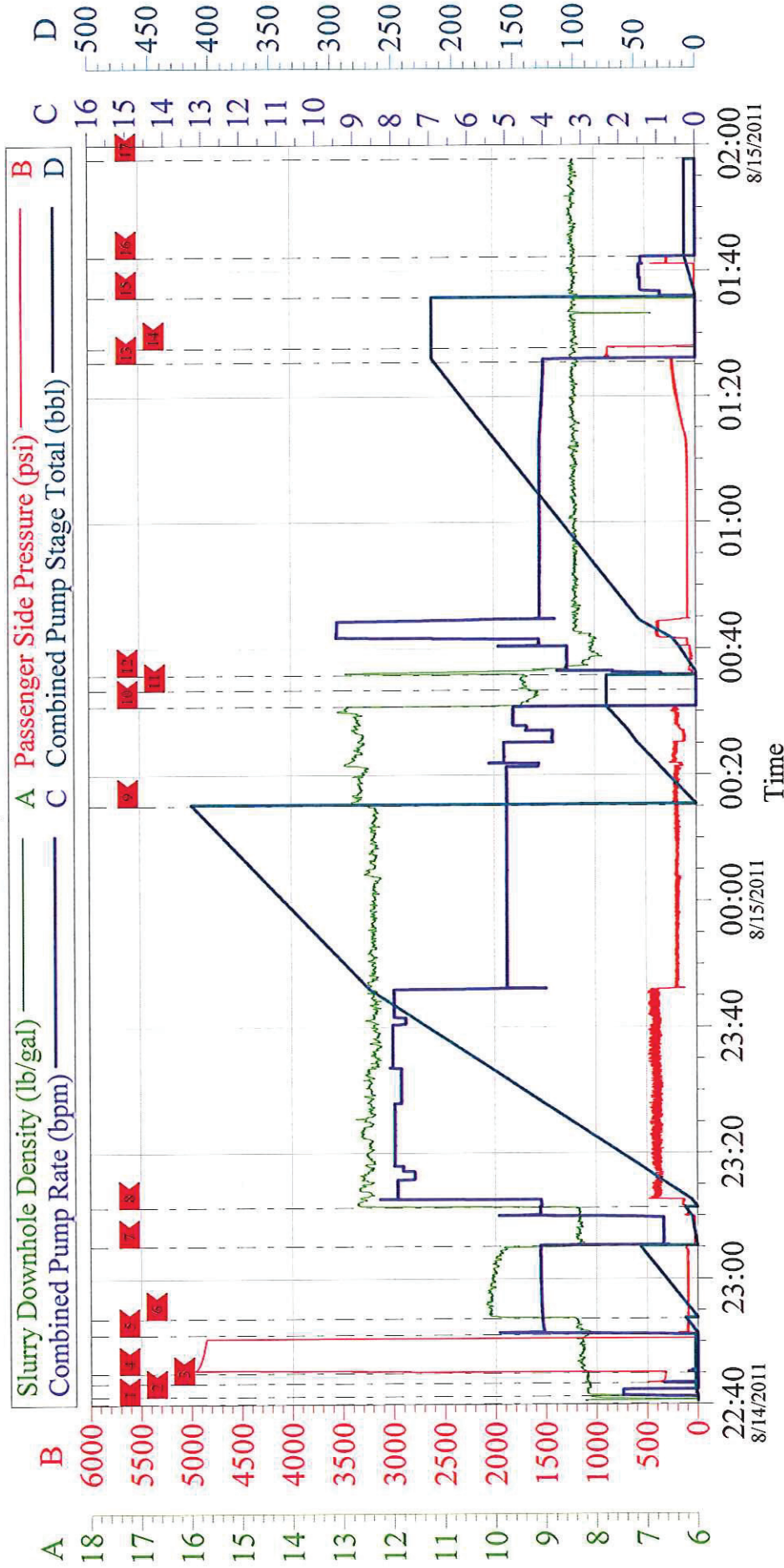


Local Event Log											
Maximum		SPPP	Maximum		SPPP	Maximum		SPPP			
1	STAT JOB	08:33:05	0.000	2	PUMP WATER	08:33:27	0.000	3	MIX CEMENT	08:35:04	-3.000
4	PUMP CEMENT	08:37:40	134.0	5	SHUTDOWN	08:48:31	134.0	6	PUMP CEMENT	08:49:43	65.00
7	SHUTDOWN	08:55:09	51.00	8	PUMP WATER	09:00:00	3.000	9	SHUTDOWN	09:02:37	3.000
10	END JOB	09:03:55	180.0								

Customer: WILLIAMS	Job Date: 15-Aug-2011	Sales Order #: 8322913
Well Description: TR 332-32-597	Job Type: TOP OUT	ADC Used: YES
Company Rep: RICK OAKS	Cement Supervisor: THOMAS PONDER	Elite #/Operator: ELITE # 3 / PAUL SALAZAR

# WILLIAMS

TR 332-32-597, 9.625 IN SURFACE



Local Event Log								
1	START JOB	8/14/2011 22:40:08	2	FILL LINES	8/14/2011 22:41:18	5	LOW TEST LINES	8/14/2011 22:43:24
4	HIGH TEST LINES	8/14/2011 22:44:57	5	PUMP H2O SPACER	8/14/2011 22:51:06	6	PUMP SUPERFLUSH XLC	8/14/2011 22:53:43
7	PUMP H2O SPACER	8/14/2011 23:05:13	8	PUMP LEAD CEMENT	8/14/2011 23:11:21	9	PUMP TAIL CEMENT	8/15/2011 00:15:08
10	SHUTDOWN	8/15/2011 00:30:50	11	DROP PLUG	8/15/2011 00:33:26	12	PUMP H2O DISPLACEMENT	8/15/2011 00:35:47
13	BUMP PLUG	8/15/2011 01:25:27	14	CHECK FLOATS	8/15/2011 01:27:40	15	PUMP THROUGH PARASITE	8/15/2011 01:35:47
16	SHUTDOWN	8/15/2011 01:42:10	17	END JOB	8/15/2011 01:57:45			

Customer:	WILLIAMS	Job Date:	14-Aug-2011	Sales Order #:	8322913
Well Description:	TR 332-32-597	Job Type:	SURFACE	ADC Used:	YES
Company Rep:	RICK OAKS	Cement Supervisor:	THOMAS PONDER	Elite #/Operator:	ELITE #3 / PAUL SALAZAR