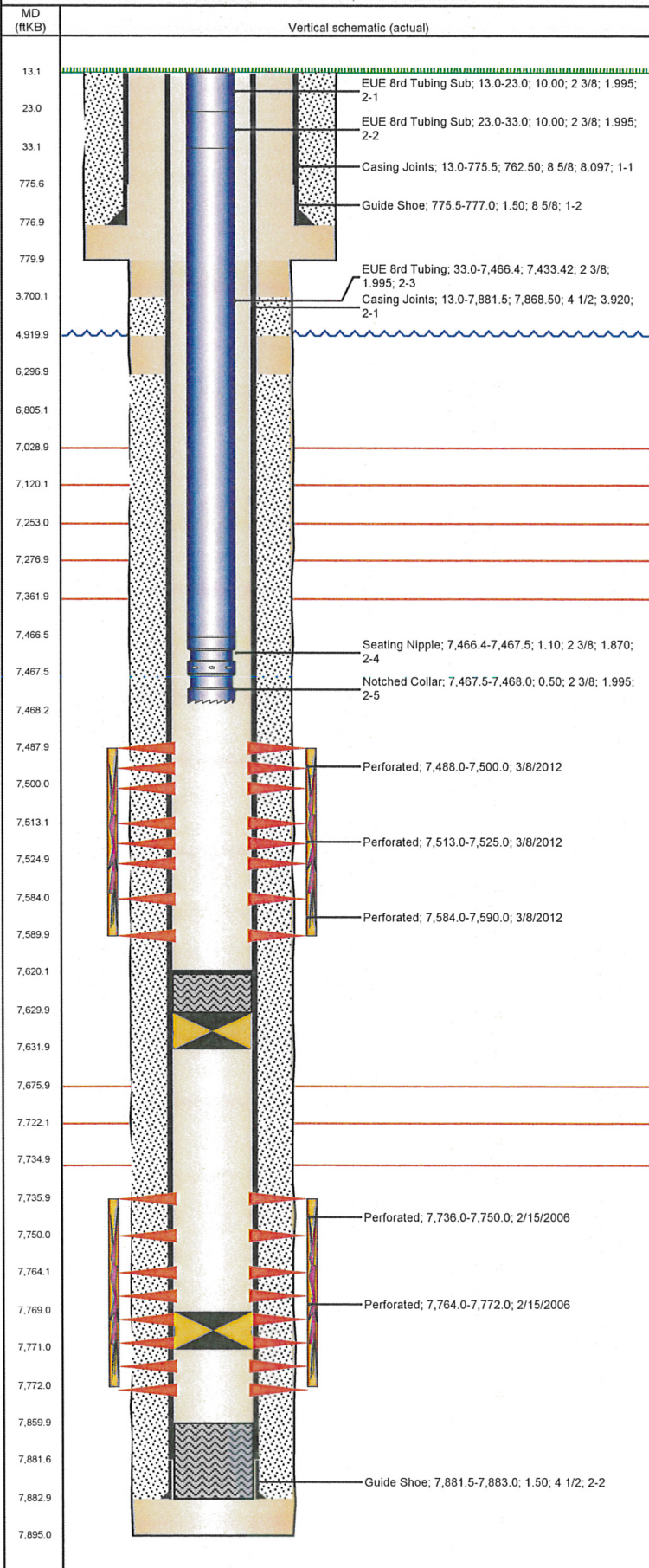


Well Name: B & M 22-05

VERTICAL - ORIGINAL HOLE, 8/8/2012 9:42:33 AM



## Well Header

API 05-123-23376	Business Unit WATTENBERG	District 15	Well Config VERTICAL
Original KB Elevation (ft) 4,948.00	KB - GL / MSL (ftKB) 13.00	Spud Date 1/24/2006	P & A Date

Comment  
DV TOOL @ +/- 4919'

Directions To Well  
WCR 26 AND WCR 41 SW 300', NW 2/10, SW 4/10, W. 300' INTO

Current PBTD (ftKB)  
ORIGINAL HOLE - 7,620.0

## Surface Location (Congressional)

Quarter 1	Quarter 2	Quarter 3	Quarter 4	Section	Township	Twnshp N..	Range	Rng E/W Dir
		SE	NW	5	2	N	65	W

## Bottom Hole Location

North-South Distance (ft)	From N or S Line	East-West Distance (ft)	From E or W Line

## Plug Back Total Depths

Date	Depth (ftKB)	Method	Com
2/13/2006	7,860.0	CASED HOLE LOG	DEPTH LOGGER ON CBL
2/22/2006	7,850.0	TAG	C/O LND TBG

## Wellbore Sections

Section Des	Size (in)	Act Top (ftKB)	Act Btm (ftKB)
SURFACE	12 1/4	13.0	780.0
PRODUCTION	7 7/8	780.0	7,895.0

## Zone Statuses

Zone Name	Status Date	Status	Job
J SAND	5/16/2006	PR	DRILLING/COMPLETION - ORIGINAL, 1/24/2006 00:00
J SAND	3/8/2012	AB	RECOMPLETION, 3/3/2012 06:00
GREENHORN	3/28/2012	PR	RECOMPLETION, 3/3/2012 06:00

## Casing Strings

Csg Des	Run Date	OD (in)	Wt/Len (lb/ft)	Grade	Top (ftKB)	Set Depth (ftKB)
Surface	1/25/2006	8 5/8	24.00	?	13.0	777.0
Production	1/31/2006	4 1/2		N-80	13.0	7,883.0

## Cement

Des	Top (ftKB)	Btm (ftKB)
SURFACE CASING CEMENT	13.0	777.0
PRODUCTION CASING CEMENT	3,700.0	4,920.0
PRODUCTION CASING CEMENT	6,297.0	7,883.0
DUMP BAIL	7,620.0	7,630.0

## Tubing Components

Item Des	OD (in)	Wt (lb/ft)	Grade	Jts	Len (ft)
EUE 8rd Tubing Sub	2 3/8	4.70	J-55	1	10.00
EUE 8rd Tubing Sub	2 3/8	4.70	J-55	1	10.00
EUE 8rd Tubing	2 3/8	4.70	J-55	237	7,433.42
Seating Nipple	2 3/8	4.70	J-55	1	1.10
Notched Collar	2 3/8	4.70	J-55	1	0.50

## Perforation Data

Zone	Bnch/St g	Entered Shot Total	Top (ftKB)	Btm (ftKB)	Date
GREENHORN, ORIGINAL HOLE		24	7,488.0	7,500.0	3/8/2012
GREENHORN, ORIGINAL HOLE		24	7,513.0	7,525.0	3/8/2012
GREENHORN, ORIGINAL HOLE		12	7,584.0	7,590.0	3/8/2012
J SAND, ORIGINAL HOLE		56	7,736.0	7,750.0	2/15/2006
J SAND, ORIGINAL HOLE		32	7,764.0	7,772.0	2/15/2006

## Stimulations & Treatments

Bnch/Stg	Date	Zone	Primary Job Type
	2/16/2006	J SAND, ORIGINAL HOLE	DRILLING/COMPLETION - ORIGINAL

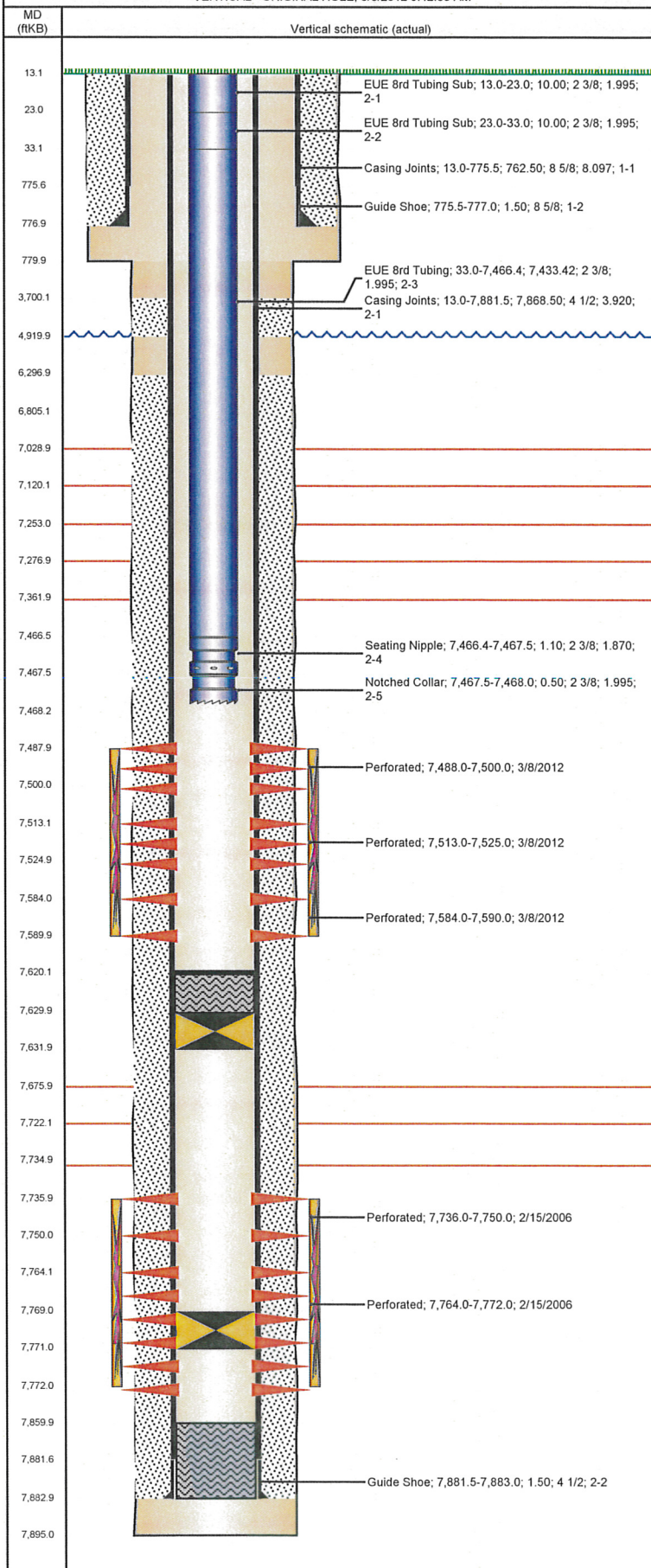
Comment

Total Add Amount	Total Clean Volume...	Vol Slurry Tot (gal)	Vol Gas Tot (MCF)
Proppant 292020 lb; Proppant Super LC 8000 lb		104286.01	
Avg Treat Pressure (psi)	Max Treat Pressure (psi)	Avg Treat Rate (bbl/min)	Max Treat Rate (bbl/min)
2,035.0	3,374.0	22.40	



Well Name: B & M 22-05

VERTICAL - ORIGINAL HOLE, 8/8/2012 9:42:33 AM



## Stimulations & Treatments

Bnch/Stg	Date	Zone	Primary Job Type	
	3/25/2012	GREENHORN, ORIGINAL HOLE	RECOMPLETION	
Comment				
(GRN HRN):5 MIN ISIP 3469 JOB WENT AS PLANNED				
Total Add Amount		Total Clean Volume...	Vol Slurry Tot (gal)	Vol Gas Tot (MCF)
Proppant Ottawa		160597.92	172073.16	
253215.098 lb				
Avg Treat Pressure (psi)	Max Treat Pressure (psi)	Avg Treat Rate (bbl/min)	Max Treat Rate (bbl/min)	
4,677.0	5,432.0	52.70	60.30	

## Other In Hole

Run Date	Des	OD (in)	Top (ftKB)	Btm (ftKB)
3/6/2012	Bridge Plug - Permanent DID NOT HOLD	3.89	7,769.0	7,771.0
3/8/2012	Bridge Plug - Permanent	3.89	7,630.0	7,632.0

## Logs

Date	Type	Top (ftKB)	Btm (ftKB)
1/30/2006	COMPENSATED DENSITY	13.0	7,865.0
2/13/2006	CEMENT BOND	6,090.0	7,855.0