

QUICKSILVER RESOURCES, INC.

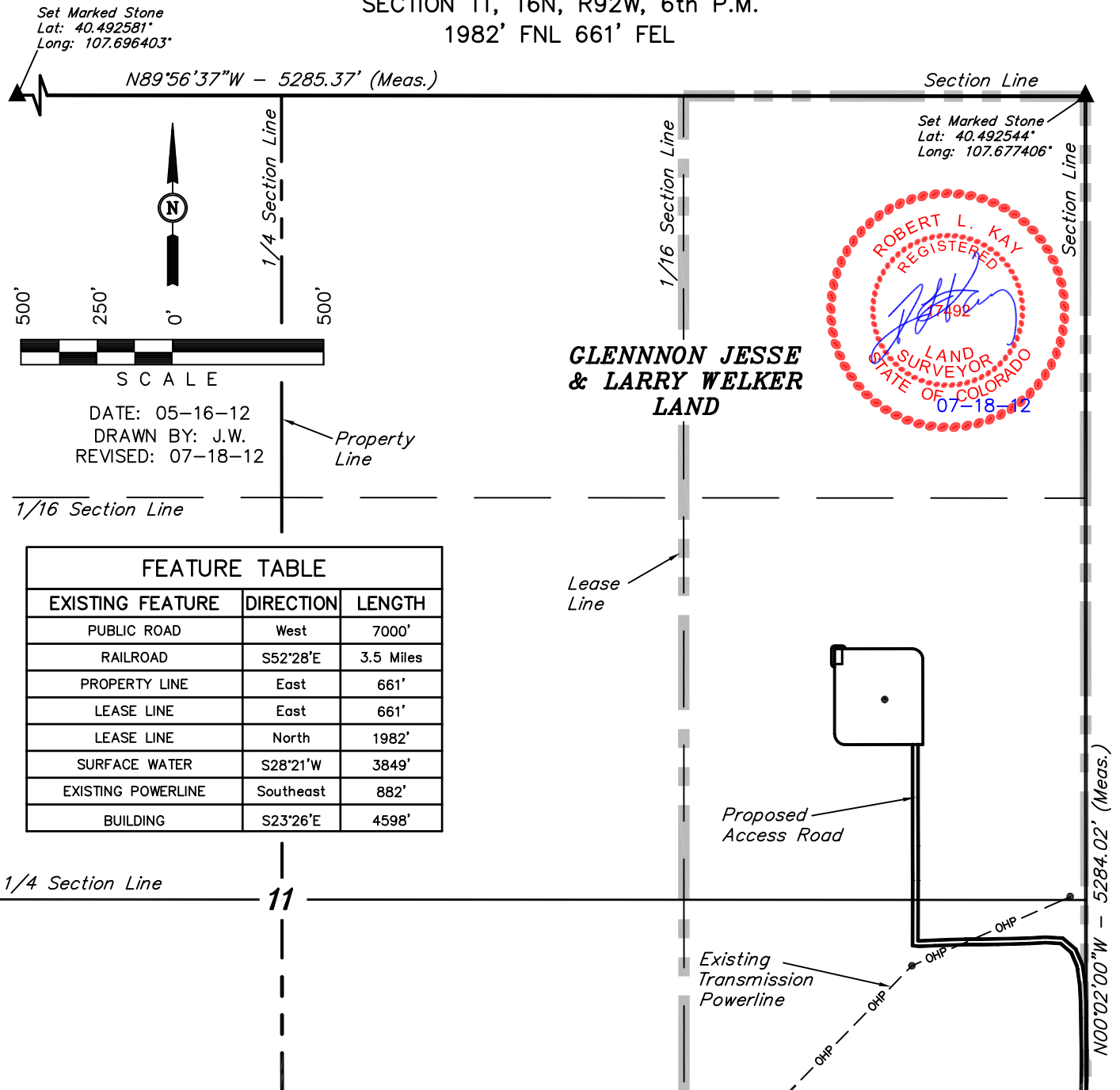
LOCATION DRAWING FOR

WELKER #42-11

SECTION 11, T6N, R92W, 6th P.M.

1982' FNL 661' FEL

FIGURE #5



PLANT COMMUNITY

- ☐ DISTURBED GRASSLAND
☐ NATIVE GRASSLAND
☐ SHRUB LAND
☐ PLAINS RIPARIAN
☐ MOUNTAIN RIPARIAN
☐ FOREST LAND
☐ WETLANDS AQUATIC
☐ ALPINE
☐ OTHER (Describe): _____

CURRENT LAND USE

- CROP LAND: ☐ IRRIGATED ☐ DRY LAND ☐ IMPROVED PASTURE ☐ HAY MEADOW ☐ CRP
 NON-CROP LAND: ☐ RANGELAND ☐ TIMBER ☐ RECREATIONAL ☐ OTHER (Describe) _____
 SUBDIVIDED: ☐ INDUSTRIAL ☐ COMMERCIAL ☐ RESIDENTIAL _____

FUTURE LAND USE

- CROP LAND: ☐ IRRIGATED ☐ DRY LAND ☐ IMPROVED PASTURE ☐ HAY MEADOW ☐ CRP
 NON-CROP LAND: ☐ RANGELAND ☐ TIMBER ☐ RECREATIONAL ☐ OTHER (Describe) _____
 SUBDIVIDED: ☐ INDUSTRIAL ☐ COMMERCIAL ☐ RESIDENTIAL _____

UINTAH ENGINEERING & LAND SURVEYING

85 So. 200 East * Vernal, Utah 84078 * (435) 789-1017