

**PROPOSED LOCATION:
WELKER #42-11**

SEE TOPO "B"

CO RD 30

5.2 MI. +/-

CRAIG 2.7 MI. +/-

CRAIG

HIGHWAY 40

**T6N
T5N**

**R 92 W
R 91 W**

LEGEND:

● PROPOSED LOCATION



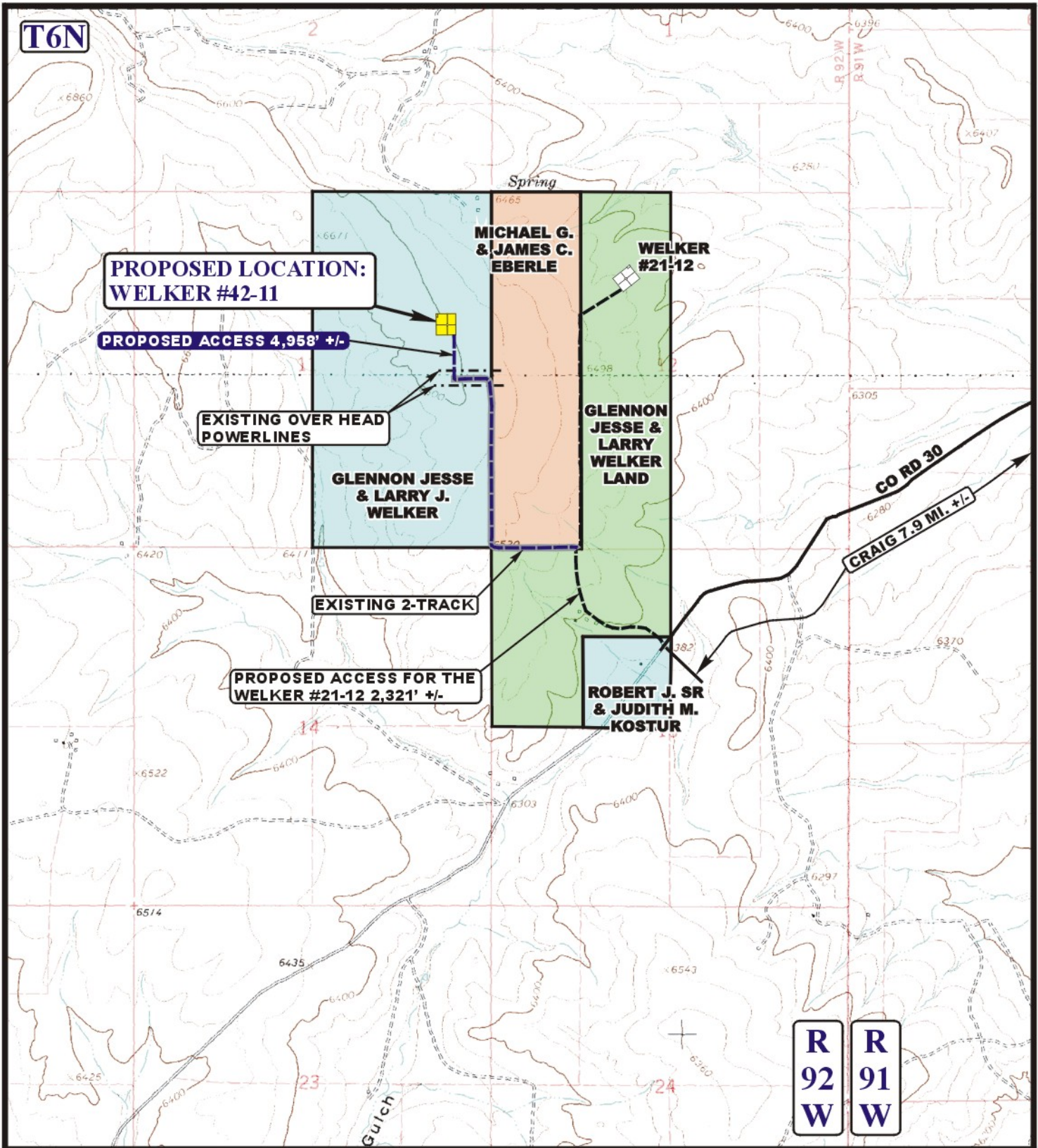
QUICKSILVER RESOURCES, INC.

**WELKER #42-11
SECTION 11, T6N, R92W, 6th P.M.
1,982' FNL 661' FEL**





U&L S Utah Engineering & Land Surveying
85 South 200 East Vernal, Utah 84078
(435) 789-1017 * FAX (435) 789-1813

**ACCESS ROAD
MAP**
05 18 12
MONTH DAY YEAR
SCALE: 1:100,000 DRAWN BY: A.T. REVISED: 00-00-00





LEGEND:

-  EXISTING ROAD
-  PROPOSED ACCESS ROAD
-  EXISTING OVER HEAD POWERLINE
-  EXISTING 2-TRACK



Utah Engineering & Land Surveying
 85 South 200 East Vernal, Utah 84078
 (435) 789-1017 * FAX (435) 789-1813



QUICKSILVER RESOURCES, INC.

WELKER #42-11
SECTION 11, T6N, R92W, 6th P.M.
1,982' FNL 661' FEL

| | | | | |
|----------------------------|----------------------|--------------------|---------------------|-------------------|
| ACCESS ROAD MAP | 05 | 18 | 12 | B TOPO |
| | <small>MONTH</small> | <small>DAY</small> | <small>YEAR</small> | |
| SCALE: 1" = 2000' | | DRAWN BY: A.T. | | REVISED: 00-00-00 |