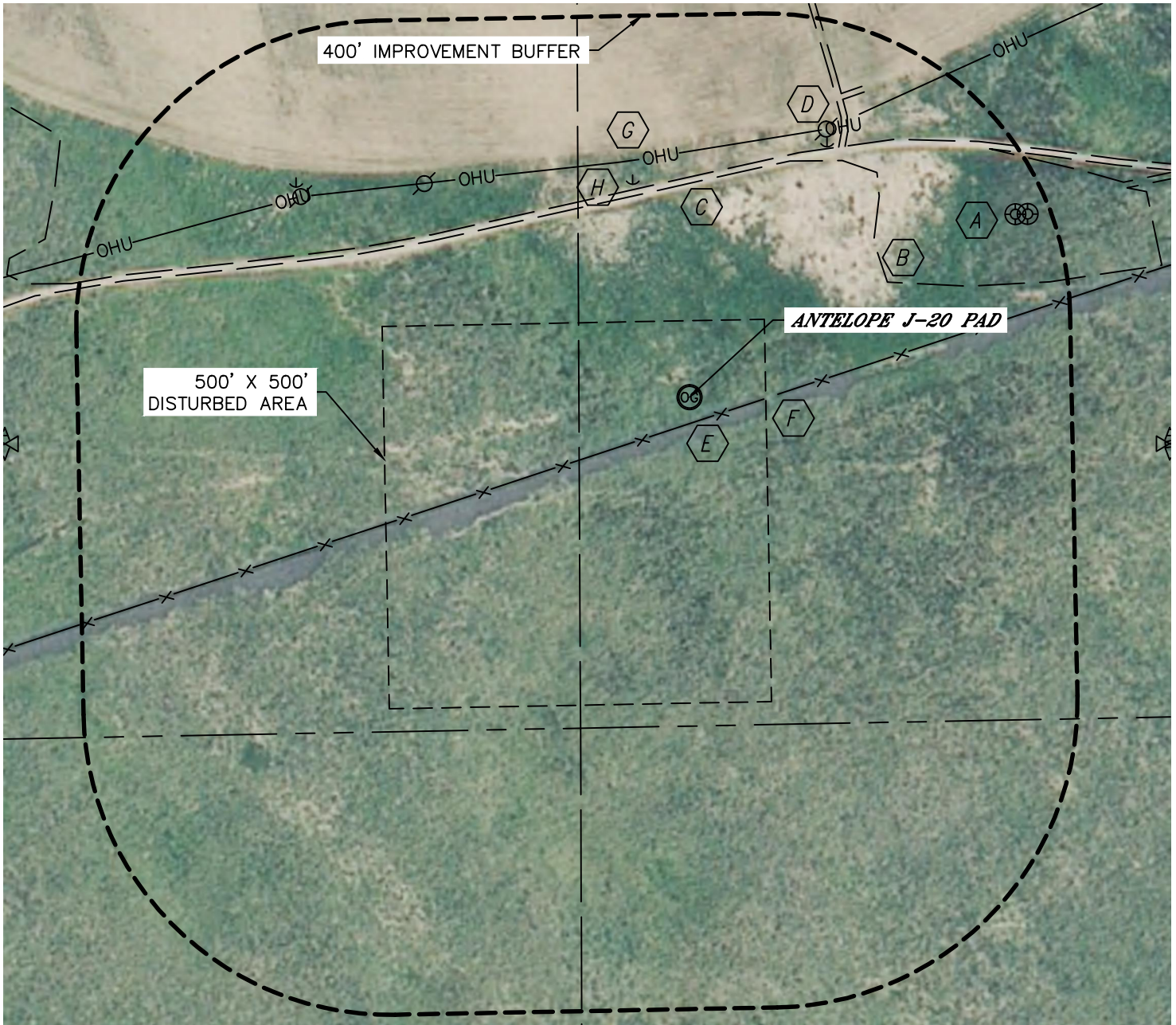




LOCATION DRAWING





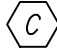
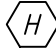


ANTELOPE J-20 PAD

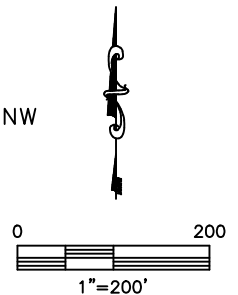
SECTION: 20
TOWNSHIP: 5N
RANGE: 62W



IMPROVEMENTS:

(MEASURED FROM THE PROPOSED ANTELOPE J-F-20HZ WELL LOCATION)

- | | |
|---|--|
|  EX. O&G WELL 489' NE, 503' NE |  GATE 97' E |
|  EDGE OF GRAVEL 300' NE |  OVERHEAD UTILITY LINE 315' N |
|  EX. ACCESS 273' N |  GUYWIRE 300' N, 384' NE, 589' NW |
|  FIELD ROAD 386' NE | |
|  FENCE 33' S | |



NEAREST: BUILDING 5280'+, PUBLIC ROAD 5280'+,
ABOVE GROUND UTILITY 315' N, RAILROAD 5280'+, PROPERTY LINE 430' S

DATE: 7/24/2012
PROJECT#: 2012071