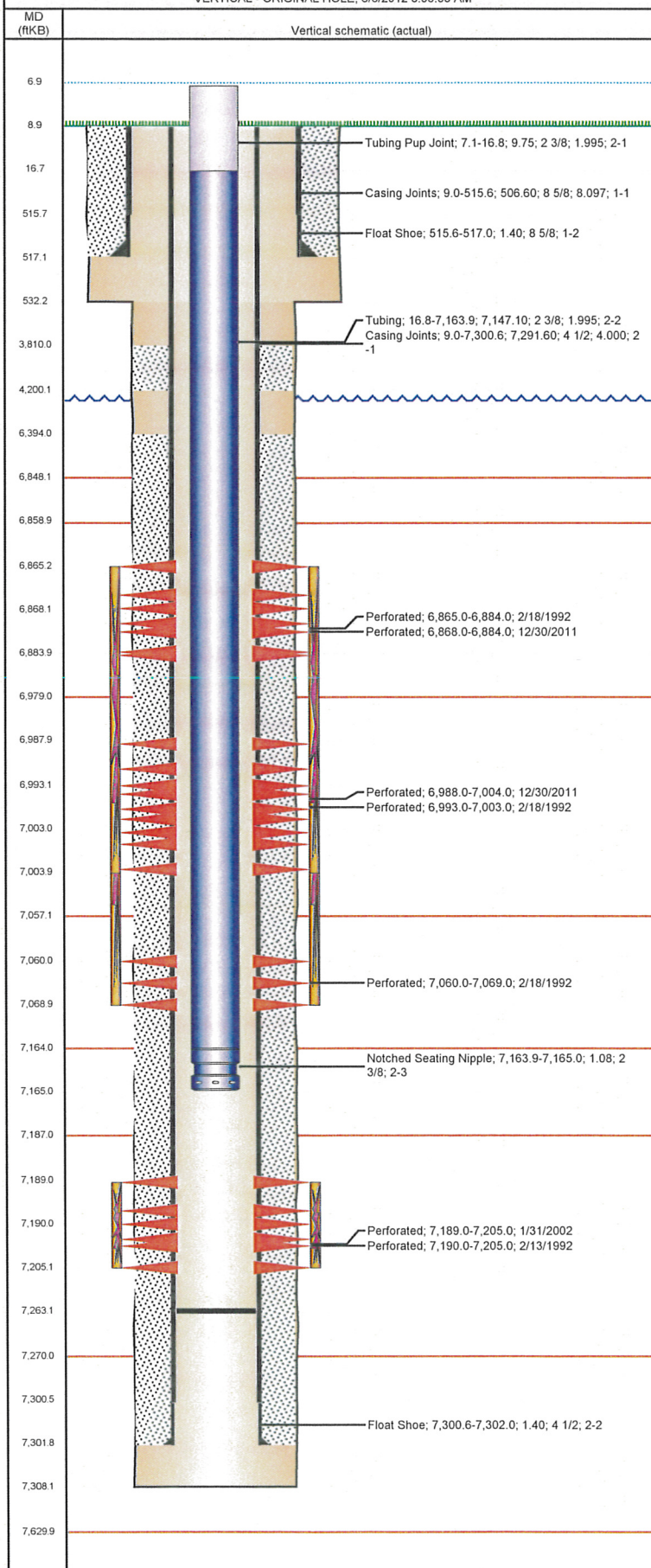


Well Name: AGRICULTURAL PRODUCTS INC 11-02F

VERTICAL - ORIGINAL HOLE, 8/8/2012 8:55:33 AM



Well Header

API	Business Unit	District	Well Config
05-123-15572	WATTENBERG	15	VERTICAL
Original KB Elevation (ft)	KB - GL / MSL (ftKB)	Spud Date	P & A Date
4,716.00	9.00	2/5/1992	

Comment

POOR BOND ACROSS SUSSEX.

Directions To Well

HWY 85 & CR 35 NORTH 7/10 WEST THROUGH FARM YARD TO T/B N 1/10 WEST 500' INTO

Current PBTD (ftKB)

ORIGINAL HOLE - 7,263.1

Surface Location (Congressional)

Quarter 1	Quarter 2	Quarter 3	Quarter 4	Section	Township	Twnshp N...	Range	Rng E/W Dir
		NW	NE	11	4	N	66	W

Bottom Hole Location

North-South Distance (ft)	From N or S Line	East-West Distance (ft)	From E or W Line

Plug Back Total Depths

Date	Depth (ftKB)	Method	Com
2/9/1992	7,257.0	TAG	FLOAT COLLAR
2/13/1992	7,255.0	CASED HOLE LOG	DEPTH-LOGGER/CBL

Wellbore Sections

Section Des	Size (in)	Act Top (ftKB)	Act Btm (ftKB)
SURFACE	12 1/4	9.0	532.0
PRODUCTION	7 7/8	532.0	7,308.0

Zone Statuses

Zone Name	Status Date	Status	Job
CODELL	4/4/1992	PR	DRILLING/COMPLETION - ORIGINAL, 2/5/1992 00:00
CODELL	2/25/1999	PR	RE-FRAC, 2/15/1999 00:00
CODELL	1/17/2003	PR	TRI-FRAC, 1/14/2003 00:00
CODELL	12/28/2011	SI	RE-FRAC, 12/28/2011 06:00
CODELL	1/30/2012	PR	RE-FRAC, 12/28/2011 06:00
NIOBRARA	4/4/1992	PR	DRILLING/COMPLETION - ORIGINAL, 2/5/1992 00:00
NIOBRARA	1/9/2012	PR	RE-FRAC, 12/28/2011 06:00
NIOBRARA	1/30/2012	PR	RE-FRAC, 12/28/2011 06:00

Casing Strings

Csg Des	Run Date	OD (in)	Wt/Len (lb/ft)	Grade	Top (ftKB)	Set Depth (ftKB)
Surface	2/5/1992	8 5/8	23.00		9.0	517.0
Production	2/9/1992	4 1/2	11.60	M-75	9.0	7,302.0

Cement

Des	Top (ftKB)	Btm (ftKB)
SURFACE CASING CEMENT	9.0	517.0
PRODUCTION CASING CEMENT	3,810.0	4,200.0
PRODUCTION CASING CEMENT	6,394.0	7,302.0

Tubing Components

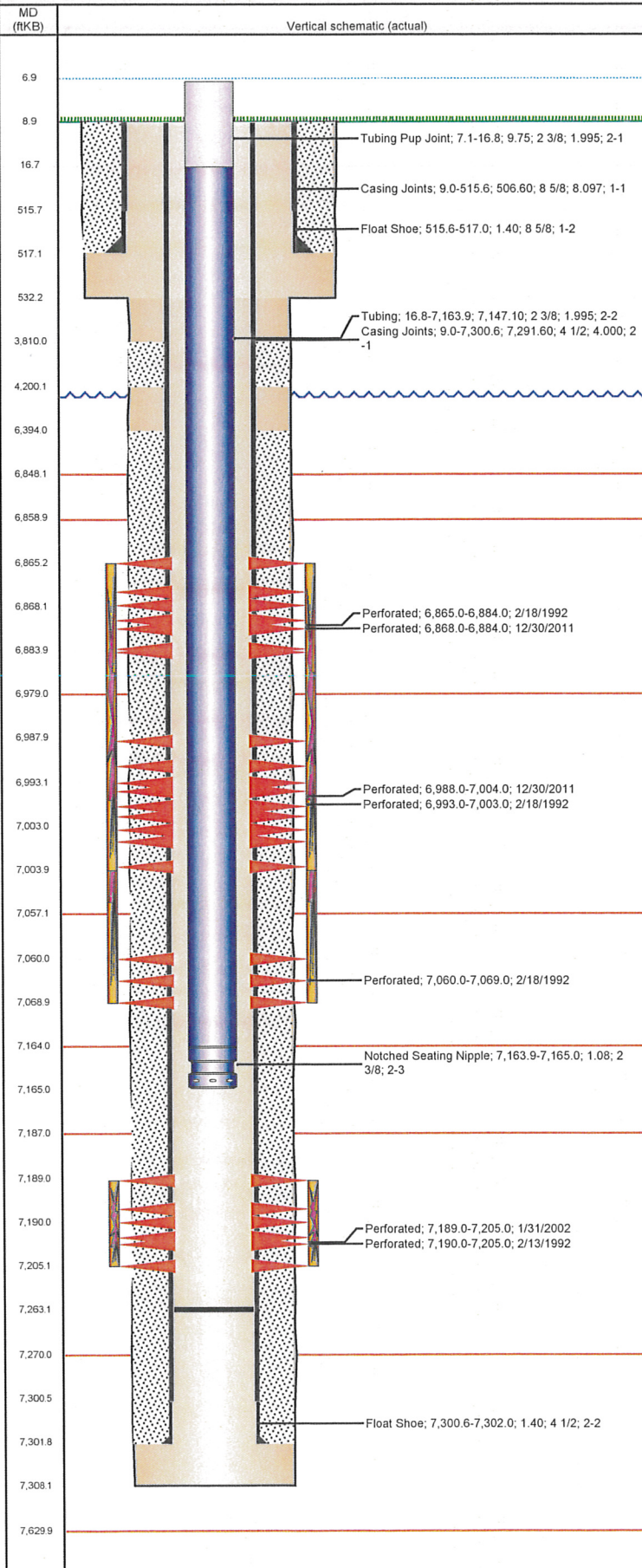
Item Des	OD (in)	Wt (lb/ft)	Grade	Jts	Len (ft)
Tubing Pup Joint	2 3/8	4.70	J-55	1	9.75
Tubing	2 3/8	4.70	J-55	231	7,147.10
Notched Seating Nipple	2 3/8			1	1.08

Perforation Data

Zone	Brnch/St g	Entered Shot Total	Top (ftKB)	Btm (ftKB)	Date
NIOBRARA, ORIGINAL HOLE	A	10	6,865.0	6,884.0	2/18/1992
NIOBRARA, ORIGINAL HOLE	A	32	6,868.0	6,884.0	12/30/2011
NIOBRARA, ORIGINAL HOLE	B	32	6,988.0	7,004.0	12/30/2011
NIOBRARA, ORIGINAL HOLE	B	10	6,993.0	7,003.0	2/18/1992
NIOBRARA, ORIGINAL HOLE	C	8	7,060.0	7,069.0	2/18/1992
CODELL, ORIGINAL HOLE		64	7,189.0	7,205.0	1/31/2002
CODELL, ORIGINAL HOLE		60	7,190.0	7,205.0	2/13/1992

Well Name: AGRICULTURAL PRODUCTS INC 11-02F

VERTICAL - ORIGINAL HOLE, 8/8/2012 8:55:33 AM



Stimulations & Treatments

Bnch/Stg	Date	Zone	Primary Job Type
	2/14/1992	CODELL, ORIGINAL HOLE	DRILLING/COMPLETION - ORIGINAL
Comment			
Total Add Amount		Total Clean Volume...	Vol Slurry Tot (gal)
Proppant 260500 lb			80808.00
Vol Gas Tot (MCF)			
Avg Treat Pressure (psi)		Max Treat Pressure (psi)	Avg Treat Rate (bbl/min)
3,400.0		5,070.0	15.00
Max Treat Rate (bbl/min)		17.50	
Bnch/Stg	Date	Zone	Primary Job Type
	2/19/1992	NIOBRARA, ORIGINAL HOLE	DRILLING/COMPLETION - ORIGINAL
Comment			
Total Add Amount		Total Clean Volume...	Vol Slurry Tot (gal)
Proppant 173000 lb			67410.00
Vol Gas Tot (MCF)			
Avg Treat Pressure (psi)		Max Treat Pressure (psi)	Avg Treat Rate (bbl/min)
5,850.0		6,100.0	13.00
Max Treat Rate (bbl/min)		13.60	
Bnch/Stg	Date	Zone	Primary Job Type
	2/19/1999	CODELL, ORIGINAL HOLE	RE-FRAC
Comment			
DID NOT REPERF CODELL			
Total Add Amount		Total Clean Volume...	Vol Slurry Tot (gal)
Proppant 246180 lb			132762.00
Vol Gas Tot (MCF)			
Avg Treat Pressure (psi)		Max Treat Pressure (psi)	Avg Treat Rate (bbl/min)
4,828.0		5,995.0	15.70
Max Treat Rate (bbl/min)			
Bnch/Stg	Date	Zone	Primary Job Type
	1/16/2003	CODELL, ORIGINAL HOLE	TRI-FRAC
Comment			
Total Add Amount		Total Clean Volume...	Vol Slurry Tot (gal)
Proppant Ottawa 245540 lb			132762.00
Vol Gas Tot (MCF)			
Avg Treat Pressure (psi)		Max Treat Pressure (psi)	Avg Treat Rate (bbl/min)
5,017.0		5,593.0	14.50
Max Treat Rate (bbl/min)		15.70	
Bnch/Stg	Date	Zone	Primary Job Type
	1/7/2012	NIOBRARA, ORIGINAL HOLE	RE-FRAC
Comment			
(NIOBRARA REFRAC) - POST-JOB JOB WENT WELL, NO ISSUES TO REPORT. FINAL ISIP = 4022 FINAL FG = 1.02 FINAL 5 MIN = 3439			
Total Add Amount		Total Clean Volume...	Vol Slurry Tot (gal)
Proppant Ottawa 244116 lb			170226.00
Vol Gas Tot (MCF)			
Avg Treat Pressure (psi)		Max Treat Pressure (psi)	Avg Treat Rate (bbl/min)
4,257.0		4,639.0	32.30
Max Treat Rate (bbl/min)		48.60	

Other In Hole

Run Date	Des	OD (in)	Top (ftKB)	Btm (ftKB)

Logs

Date	Type	Top (ftKB)	Btm (ftKB)
2/9/1992	GAMMA RAY	3,550.0	7,306.0
2/9/1992	INDUCTION	517.0	7,306.0
2/13/1992	CEMENT BOND	3,580.0	7,255.0