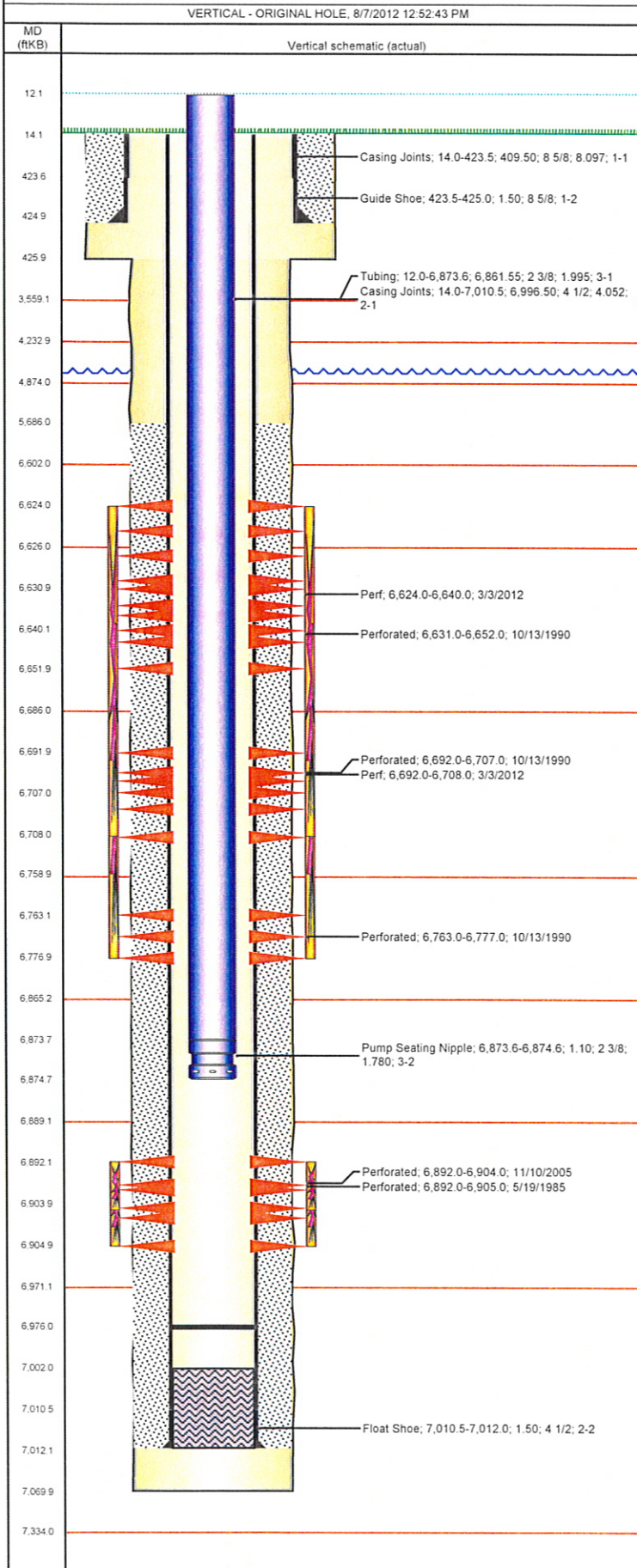


Well Name: NOVACEK 01

VERTICAL - ORIGINAL HOLE, 8/7/2012 12:52:43 PM



Well Header

API 05-123-12347	Business Unit WATTENBERG	District 15	Well Config VERTICAL
Original KB Elevation (ft) 4,727.00	KB - GL / MSL (ftKB) 14.00	Spud Date 5/4/1985	P & A Date

Comment

SPORADIC BOND @ 5686'-5950'

Directions To Well

wcr 42 & wcr 53 East 0.6, south into

Current PBTD (ftKB)

ORIGINAL HOLE - 6,976.0

Surface Location (Congressional)

Quarter 1	Quarter 2	Quarter 3	Quarter 4	Section	Township	Twnshp N...	Range	Rng E/W Dir
		NW	NE	28	4	N	64	W

Bottom Hole Location

North-South Distance (ft)	From N or S Line	East-West Distance (ft)	From E or W Line
---------------------------	------------------	-------------------------	------------------

Plug Back Total Depths

Date	Depth (ftKB)	Method	Com
5/11/1985	7,002.0	CASING TALLY	GUIDE SHOE
5/13/1985	7,005.0	CASED HOLE LOG	DEPTH LOGGER

Wellbore Sections

Section Des	Size (in)	Act Top (ftKB)	Act Btm (ftKB)
SURFACE	12 1/4	14.0	426.0
PRODUCTION	7 7/8	426.0	7,070.0

Zone Statuses

Zone Name	Status Date	Status	Job
NIOBRARA	10/24/1990	PR	RECOMPLETION, 10/16/1990 00:00
NIOBRARA	3/9/2012	PR	RE-FRAC, 2/27/2012 16:00
NIOBRARA	3/27/2012	PR	RE-FRAC, 2/27/2012 16:00
CODELL	6/13/1985	PR	DRILLING/COMPLETION - ORIGINAL, 5/4/1985 00:00
CODELL	12/5/2005	PR	RE-FRAC, 11/9/2005 00:00
CODELL	3/3/2012	SI	RE-FRAC, 2/27/2012 16:00
CODELL	3/27/2012	PR	RE-FRAC, 2/27/2012 16:00

Casing Strings

Csg Des	Run Date	OD (in)	Wt/Len (lb/ft)	Grade	Top (ftKB)	Set Depth (ftKB)
Surface	5/4/1985	8 5/8	24.00	J-55	14.0	425.0
Production	5/10/1985	4 1/2	10.50	J-55	14.0	7,012.0

Cement

Des	Top (ftKB)	Btm (ftKB)
SURFACE CASING CEMENT	14.0	425.0
PRODUCTION CASING CEMENT	5,686.0	7,012.0

Tubing Components

Item Des	OD (in)	Wt (lb/ft)	Grade	Jts	Len (ft)
Tubing	2 3/8	4.70	J-55	222	6,861.55
Pump Seating Nipple	2 3/8	4.70	J-55	1	1.10

Perforation Data

Zone	Bnch/St g	Entered Shot Total	Top (ftKB)	Btm (ftKB)	Date
NIOBRARA, ORIGINAL HOLE		32	6,624.0	6,640.0	3/3/2012
NIOBRARA, ORIGINAL HOLE	A	3	6,631.0	6,652.0	10/13/1990
NIOBRARA, ORIGINAL HOLE	B	4	6,692.0	6,707.0	10/13/1990
NIOBRARA, ORIGINAL HOLE		32	6,692.0	6,708.0	3/3/2012
NIOBRARA, ORIGINAL HOLE	C	3	6,763.0	6,777.0	10/13/1990
CODELL, ORIGINAL HOLE		14	6,892.0	6,905.0	5/19/1985
CODELL, ORIGINAL HOLE		48	6,892.0	6,904.0	11/10/2005

Stimulations & Treatments

Bnch/Stg	Date	Zone	Primary Job Type
	5/20/1985	CODELL, ORIGINAL HOLE	DRILLING/COMPLETION - ORIGINAL

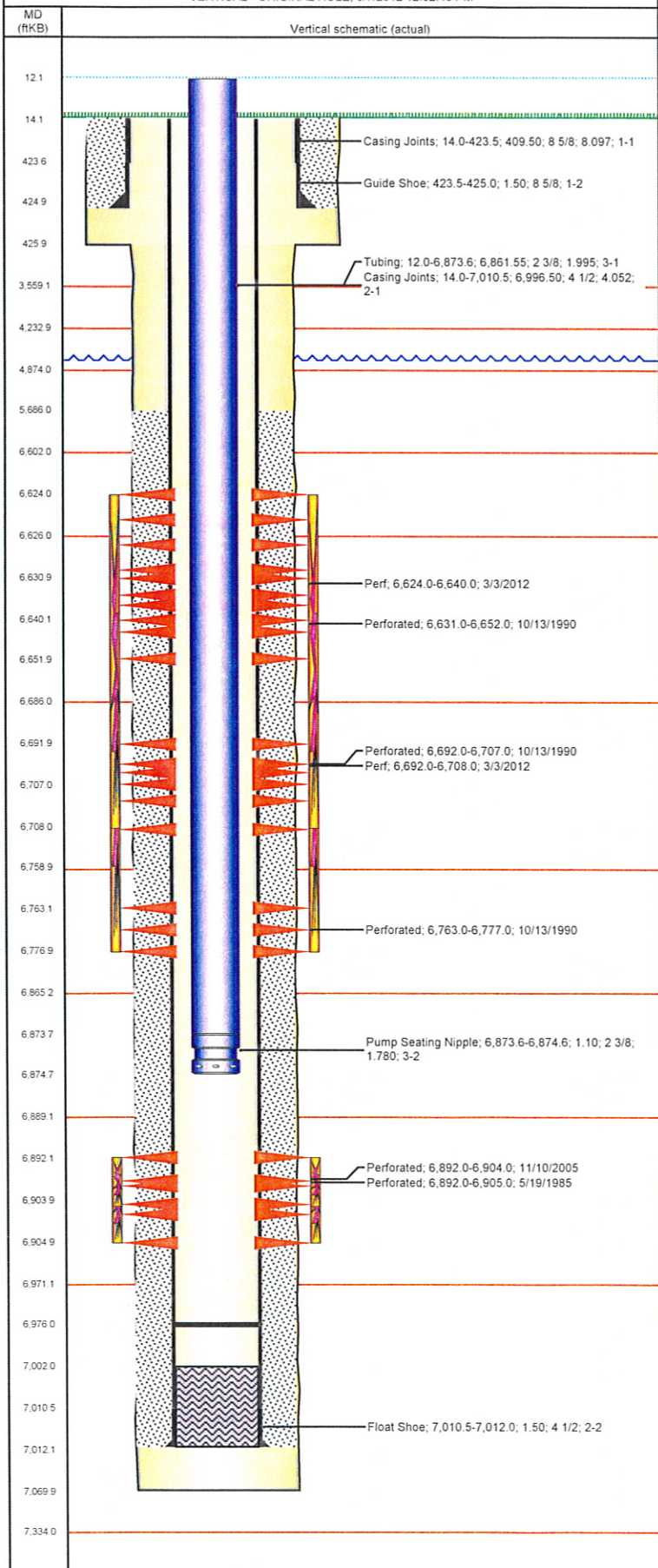
Comment

COMPLETE FRAC REPORT MISSING FROM PLATTEVILLE WELL FILE

Total Add Amount Proppant Bulk Sand 96000 lb; Proppant Mesh Sand 12000 lb	Total Clean Volume...	Vol Slurry Tot (gal) 113652.01	Vol Gas Tot (MCF)
Avg Treat Pressure (psi)	Max Treat Pressure (psi)	Avg Treat Rate (bbl/min)	Max Treat Rate (bbl/min)

Well Name: NOVACEK 01

VERTICAL - ORIGINAL HOLE, 8/7/2012 12:52:43 PM



Stimulations & Treatments

Brch/Stg	Date	Zone	Primary Job Type
	10/16/1990	NIOBRARA, ORIGINAL HOLE	RECOMPLETION
Comment			
Total Add Amount		Total Clean Volume...	Vol Slurry Tot (gal)
Proppant Bulk Sand 162000 lb; Proppant Mesh Sand 9000 lb			71484.01
Avg Treat Pressure (psi)	Max Treat Pressure (psi)	Avg Treat Rate (bbl/min)	Max Treat Rate (bbl/min)
5,500.0		12.00	
Brch/Stg	Date	Zone	Primary Job Type
	11/21/2005	CODELL, ORIGINAL HOLE	RE-FRAC
Comment			
Total Add Amount		Total Clean Volume...	Vol Slurry Tot (gal)
Proppant Ottawa 246520 lb			126882.00
Avg Treat Pressure (psi)	Max Treat Pressure (psi)	Avg Treat Rate (bbl/min)	Max Treat Rate (bbl/min)
5,169.0	5,573.0	14.30	14.70
Brch/Stg	Date	Zone	Primary Job Type
AB	3/8/2012	NIOBRARA, ORIGINAL HOLE	RE-FRAC
Comment			
(NIOBRARA)			
OPEN WELL WITH NO PRESSURE, FORMATION BREAK 2887 PSI @ 1.3 BPM.			
PRE-TREATMENT ISIP= 3201 PSI, 5 MIN= 2649 PSI, FG= .91 PSI/FT.			
SHUTDOWN DURING PAD TO WORK ON BUFFER, DOWN FOR 15 MIN, HAD TO SLOW RATE DOWN DUE TO NO ABLE TO GET X-LINKED SAMPLE FROM LAB VAN FAST ENOUGH DURING PAD TO BE ABLE TO START SAND, DURING 3 PSA SANDED OFF THE BELT ON SAND MASTER CAUSING SAND DENSITY TO DROP TO 1.5 PSA BEFORE RECOVERING. GAUGE WATER AT 2 PPG STAGE HAVING 138 BBL TO THE POSITIVE, THEN ALL OF IT SUDDEN AT 3 PPG WE WERE DEAD EVEN ON WATER SO LOST WATER SOMEWHERE, HAD TO LEAVE 7000 LBS ON SAND MASTER TO BE ABLE TO FLUSH WELL.			
PRE-TREATMENT ISIP= 3787 PSI, 5 MIN= 3454 PSI.			
TREATMENT AVGS: VISC= 17.06 CP, PH= 10.38, TEMP= 67.3 F, PRESS= 6475 PSI, RATE= 25.3 BPM, MAX= PRESS= 7009 PSI, RATE= 27 BPM.			
Total Add Amount		Total Clean Volume...	Vol Slurry Tot (gal)
Ottawa 241658.5 lb		150680.04	161713.86
Avg Treat Pressure (psi)	Max Treat Pressure (psi)	Avg Treat Rate (bbl/min)	Max Treat Rate (bbl/min)
6,475.0	7,009.0	25.30	27.00

Other In Hole

Run Date	Des	OD (in)	Top (ftKB)	Btm (ftKB)

Logs

Date	Type	Top (ftKB)	Btm (ftKB)
5/9/1985	COMPENSATED DENSITY	4,200.0	7,030.0
5/9/1985	INDUCTION	403.0	7,030.0
5/13/1985	CBL/CCL/GR	5,550.0	6,999.0