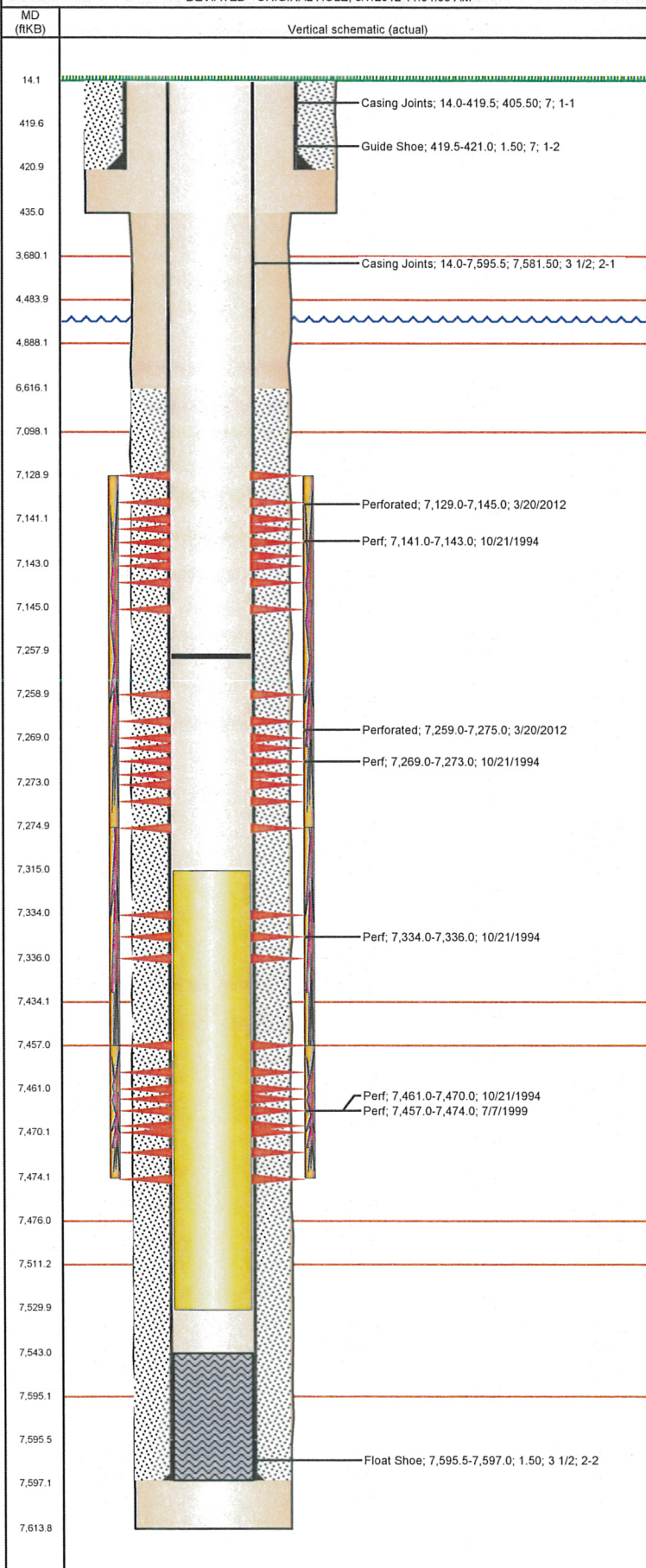


Well Name: DOS RIOS 34-08H6

DEVIATED - ORIGINAL HOLE, 8/7/2012 11:04:56 AM



Well Header

API 05-123-18375	Business Unit WATTENBERG	District 15	Well Config DEVIATED
Original KB Elevation (ft) 4,685.00	KB - GL / MSL (ftKB) 14.00	Spud Date 9/26/1994	P & A Date

Comment

Battered with Dos Rios 34-7H6 (Cdl refrac 6/99)

Directions To Well

WCR 394 & 33 1/4, NORTH 2/10, WEST 2/10, NORTH 2/10, NORTH INTO.

Current PBTD (ftKB)

ORIGINAL HOLE - 7,258.0

Surface Location (Congressional)

Quarter 1	Quarter 2	Quarter 3	Quarter 4	Section	Township	Twnshp N...	Range	Rng E/W Dir
		NE	SE	34	5	N	66	W

Bottom Hole Location

North-South Distance (ft)	From N or S Line	East-West Distance (ft)	From E or W Line
1,895.0	N	729.0	E

Plug Back Total Depths

Date	Depth (ftKB)	Method	Com
10/4/1994	7,568.0	CASED HOLE LOG	LATCH DOWN COLLAR
10/19/1994	7,543.0	CASED HOLE LOG	DEPTH LOGGER

Wellbore Sections

Section Des	Size (in)	Act Top (ftKB)	Act Btm (ftKB)
Surface	9 7/8	14.0	435.0
Production	6 1/4	435.0	7,614.0

Zone Statuses

Zone Name	Status Date	Status	Job
NIOBRARA	11/2/1994	PR	DRILLING/COMPLETION - ORIGINAL, 10/21/1994 00:00
NIOBRARA	4/16/2012	PR	RE-FRAC, 3/15/2012 12:00
CODELL	11/2/1994	PR	DRILLING/COMPLETION - ORIGINAL, 10/21/1994 00:00
CODELL	7/8/1999	PR	RE-FRAC, 7/8/1999 00:00
CODELL	11/17/2007	PR	TRI-FRAC, 11/13/2007 00:00
CODELL	3/15/2012	SI	RE-FRAC, 3/15/2012 12:00

Casing Strings

Csg Des	Run Date	OD (in)	Wt/Len (lb/ft)	Grade	Top (ftKB)	Set Depth (ftKB)
Surface Casing	9/26/1994	7	17.00	H-90	14.0	421.0
Production	10/4/1994	3 1/2	7.70	M-70	14.0	7,597.0

Cement

Des	Top (ftKB)	Btm (ftKB)
SURFACE CASING CEMENT	14.0	421.0
PRODUCTION CASING CEMENT	6,616.0	7,597.0

Tubing Components

Item Des	OD (in)	Wt (lb/ft)	Grade	Jts	Len (ft)

Perforation Data

Zone	Bnch/St g	Entered Shot Total	Top (ftKB)	Btm (ftKB)	Date
NIOBRARA, ORIGINAL HOLE	A	64	7,129.0	7,145.0	3/20/2012
NIOBRARA, ORIGINAL HOLE	A	2	7,141.0	7,143.0	10/21/1994
NIOBRARA, ORIGINAL HOLE	B	64	7,259.0	7,275.0	3/20/2012
NIOBRARA, ORIGINAL HOLE	B	4	7,269.0	7,273.0	10/21/1994
NIOBRARA, ORIGINAL HOLE	C	2	7,334.0	7,336.0	10/21/1994
CODELL, ORIGINAL HOLE		68	7,457.0	7,474.0	7/7/1999
CODELL, ORIGINAL HOLE		9	7,461.0	7,470.0	10/21/1994

Stimulations & Treatments

Bnch/Stg	Date	Zone	Primary Job Type
	10/21/1994	NIOBRARA-CODELL, ORIGINAL HOLE	DRILLING/COMPLETION - ORIGINAL

Comment

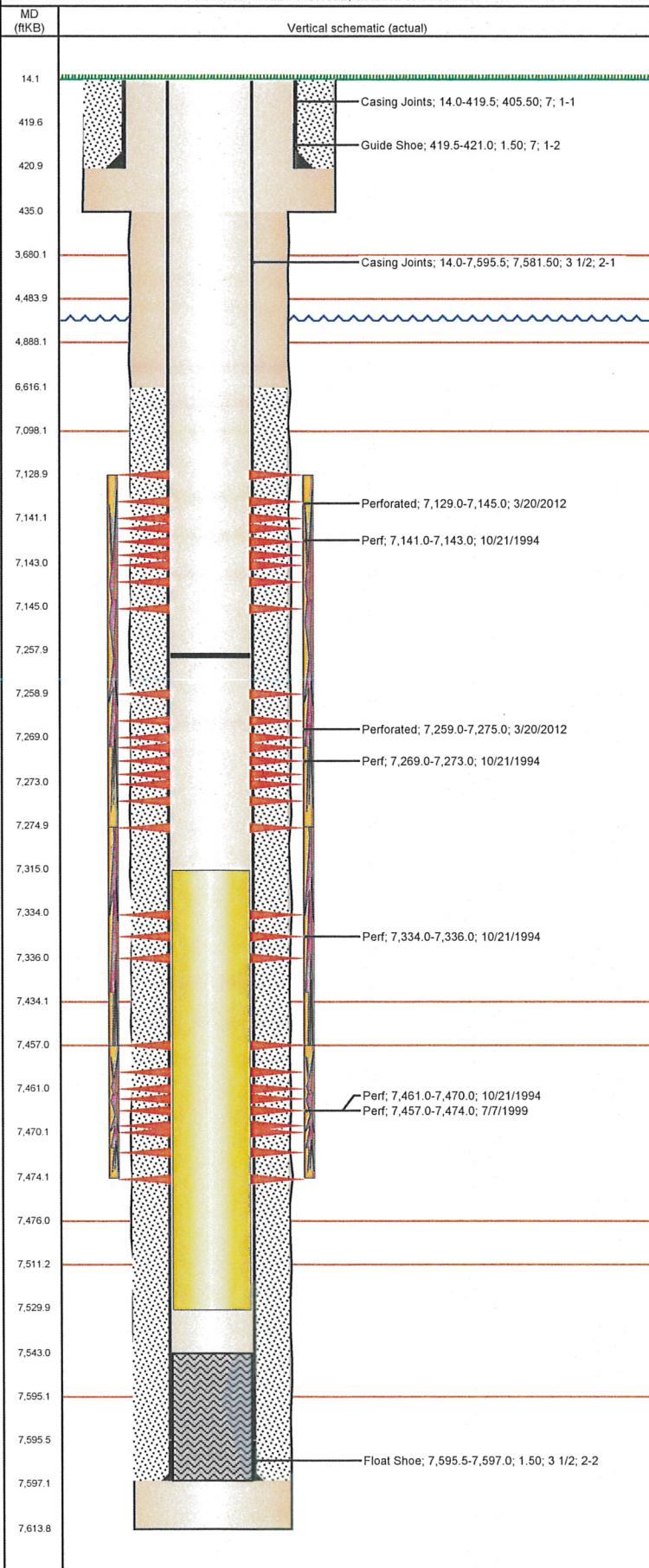
ORIGINAL FRAC REPORTS MISSING FROM WELLFILE. C/N LIMITED ENTRY

Total Add Amount	Total Clean Volume...	Vol Slurry Tot (gal)	Vol Gas Tot (MCF)
Proppant Bulk Sand 430000 lb		127050.00	

Avg Treat Pressure (psi)	Max Treat Pressure (psi)	Avg Treat Rate (bbl/min)	Max Treat Rate (bbl/min)

Well Name: DOS RIOS 34-08H6

DEVIATED - ORIGINAL HOLE, 8/7/2012 11:04:58 AM



Stimulations & Treatments

Bnch/Stg	Date	Zone	Primary Job Type
	7/8/1999	CODELL, ORIGINAL HOLE	RE-FRAC
Comment			
Total Add Amount		Total Clean Volume...	Vol Slurry Tot (gal)
Proppant Ottawa 245780 lb			134085.00
Avg Treat Pressure (psi)	6,958.0	Max Treat Pressure (psi)	7,155.0
		Avg Treat Rate (bbl/min)	13.20
		Max Treat Rate (bbl/min)	16.30
Bnch/Stg	Date	Zone	Primary Job Type
	11/13/2007	CODELL, ORIGINAL HOLE	TRI-FRAC
Comment			
Total Add Amount		Total Clean Volume...	Vol Slurry Tot (gal)
Proppant Ottawa 248920 lb			128352.00
Avg Treat Pressure (psi)	7,276.0	Max Treat Pressure (psi)	7,691.0
		Avg Treat Rate (bbl/min)	14.20
		Max Treat Rate (bbl/min)	14.40
Bnch/Stg	Date	Zone	Primary Job Type
	3/28/2012	NIOBRARA, ORIGINAL HOLE	RE-FRAC
Comment			
(NIOBRARA RF): LIGHTNING 18# FLUID SYSTEM. SHUT DOWN 655 BBL INTO SLICKWATER PAD BECAUSE BACKSIDE VALVE WAS LEAKING. REPLACED VALVE AND RESUMED PUMPING, DOWN FOR 9 MINUTES TO FIX THE ISSUE. 50 BBLs LATE STARTING 1 PSA BECAUSE OPERATOR DID NOT OPEN THE GATE TO SAND SCREW, SWITCH SCREWS WITH NO PROBLEMS. JOB WENT WELL WITH NO OTHER ISSUES TO REPORT. POST JOB 5 MIN 3240 PSI			
Total Add Amount		Total Clean Volume...	Vol Slurry Tot (gal)
Proppant Ottawa 247441.502 lb			159050.22
Avg Treat Pressure (psi)	5,586.0	Max Treat Pressure (psi)	6,278.0
		Avg Treat Rate (bbl/min)	33.24
		Max Treat Rate (bbl/min)	38.64

Other In Hole

Run Date	Des	OD (in)	Top (ftKB)	Btm (ftKB)
3/15/2012	Sand plug	3.068	7,315.0	7,530.0

Logs

Date	Type	Top (ftKB)	Btm (ftKB)
10/19/1994	Cement Bond	6,500.0	7,538.0
10/19/1994	Induction	426.0	7,612.0