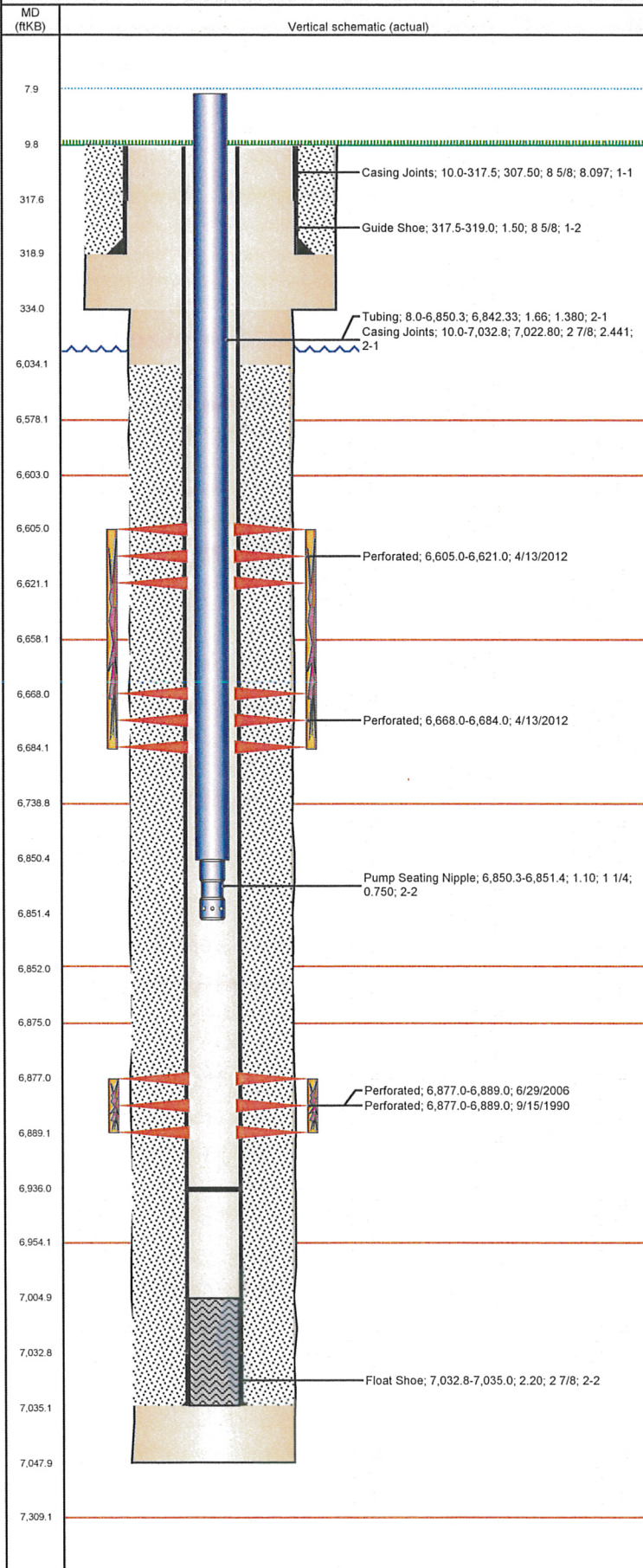


Well Name: LINDSAY C33-09

VERTICAL - ORIGINAL HOLE, 8/7/2012 10:55:19 AM



Well Header

API 05-123-14722	Business Unit WATTENBERG	District 15	Well Config VERTICAL
Original KB Elevation (ft) 4,709.00	KB - GL / MSL (ftKB) 10.00	Spud Date 9/5/1990	P & A Date

Comment

Directions To Well

WCR 55 & WCR 36, (GATE 7777) WEST 0.1, NORTH 1.1 MILES TO "Y" TAKE RIGHT HAND FORK, EAST-NORTHEAST 0.3, NORTH 0.3 TO FENCE LINE, EAST 0.3, SOUTH 0.3 INTO

Current PBTD (ftKB)

ORIGINAL HOLE - 6,936.0

Surface Location (Congressional)

Quarter 1	Quarter 2	Quarter 3	Quarter 4	Section	Township	Twnshp N...	Range	Rng E/W Dir
		NE	SE	33		N	64	W

Bottom Hole Location

North-South Distance (ft)	From N or S Line	East-West Distance (ft)	From E or W Line

Plug Back Total Depths

Date	Depth (ftKB)	Method	Com
9/7/1990	7,005.0	CASING TALLY	LATCH DOWN COLLAR
9/14/1990	6,949.0	CASED HOLE LOG	DEPTH LOGGER

Wellbore Sections

Section Des	Size (in)	Act Top (ftKB)	Act Btm (ftKB)
SURFACE	12 1/4	10.0	334.0
PRODUCTION	7 7/8	334.0	7,048.0

Zone Statuses

Zone Name	Status Date	Status	Job
CODELL	9/22/1990	PR	DRILLING/COMPLETION - ORIGINAL, 9/5/1990 00:00
CODELL	9/12/2006	PR	RE-FRAC, 6/26/2006 00:00
CODELL	4/11/2012	SI	RECOMPLETION, 4/11/2012 06:00
NIORARA	4/23/2012	PR	

Casing Strings

Csg Des	Run Date	OD (in)	Wt/Len (lb/ft)	Grade	Top (ftKB)	Set Depth (ftKB)
Surface Casing	9/5/1990	8 5/8	24.00		10.0	319.0
Production	9/9/1990	2 7/8	6.50	N-80	10.0	7,035.0

Cement

Des	Top (ftKB)	Btm (ftKB)
SURFACE CASING CEMENT	10.0	319.0
PRODUCTION CASING CEMENT	6,034.0	7,035.0

Tubing Components

Item Des	OD (in)	Wt (lb/ft)	Grade	Jts	Len (ft)
Tubing	1.66	2.30	J-55	208	6,842.33
Pump Seating Nipple	1 1/4	2.30	J-55	1	1.10

Perforation Data

Zone	Bnch/St g	Entered Shot Total	Top (ftKB)	Btm (ftKB)	Date
NIORARA, ORIGINAL HOLE	A	64	6,605.0	6,621.0	4/13/2012
NIORARA, ORIGINAL HOLE	B	64	6,668.0	6,684.0	4/13/2012
CODELL, ORIGINAL HOLE		20	6,877.0	6,889.0	9/15/1990
CODELL, ORIGINAL HOLE		48	6,877.0	6,889.0	6/29/2006

Stimulations & Treatments

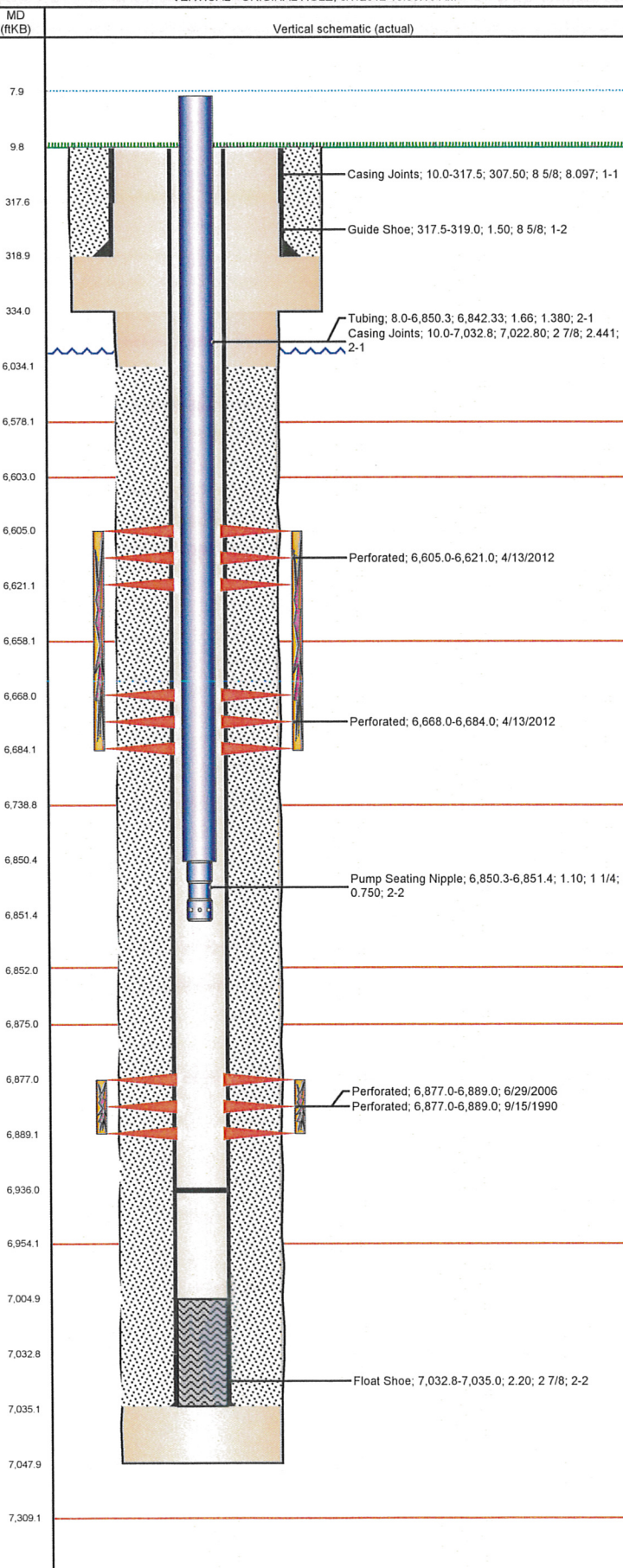
Bnch/Stg	Date	Zone	Primary Job Type
	9/17/1990	CODELL, ORIGINAL HOLE	DRILLING/COMPLETION - ORIGINAL

Comment

Total Add Amount Proppant Bulk Sand 190000 lb; Proppant Mesh 10000 lb	Total Clean Volume...	Vol Slurry Tot (gal) 71022.00	Vol Gas Tot (MCF)
Avg Treat Pressure (psi) 4,600.0	Max Treat Pressure (psi) 5,020.0	Avg Treat Rate (bbl/min) 12.00	Max Treat Rate (bbl/min)

Well Name: LINDSAY C33-09

VERTICAL - ORIGINAL HOLE, 8/7/2012 10:55:19 AM



Stimulations & Treatments

Brch/Stg	Date	Zone	Primary Job Type
	7/27/2006	CODELL, ORIGINAL HOLE	RE-FRAC
Comment			
Total Add Amount		Total Clean Volume...	Vol Slurry Tot (gal)
Proppant Ottawa 246940 lb			125202.00
Avg Treat Pressure (psi)	Max Treat Pressure (psi)	Avg Treat Rate (bbl/min)	Max Treat Rate (bbl/min)
4,854.0	5,086.0	13.60	14.70
Brch/Stg	Date	Zone	Primary Job Type
	4/20/2012	NIOBRARA, ORIGINAL HOLE	DRILLING/COMPLETION - ORIGINAL
Comment			
(NRC) : JOB WENT AS PLANNED			
Total Add Amount		Total Clean Volume...	Vol Slurry Tot (gal)
		144645.48	155787.66
Avg Treat Pressure (psi)	Max Treat Pressure (psi)	Avg Treat Rate (bbl/min)	Max Treat Rate (bbl/min)
4,728.0	5,404.0	13.60	15.60

Other In Hole

Run Date	Des	OD (in)	Top (ftKB)	Btm (ftKB)

Logs

Date	Type	Top (ftKB)	Btm (ftKB)
9/9/1990	INDUCTION	320.0	7,044.0
9/14/1990	CBL/CCL/GR	5,950.0	6,944.0