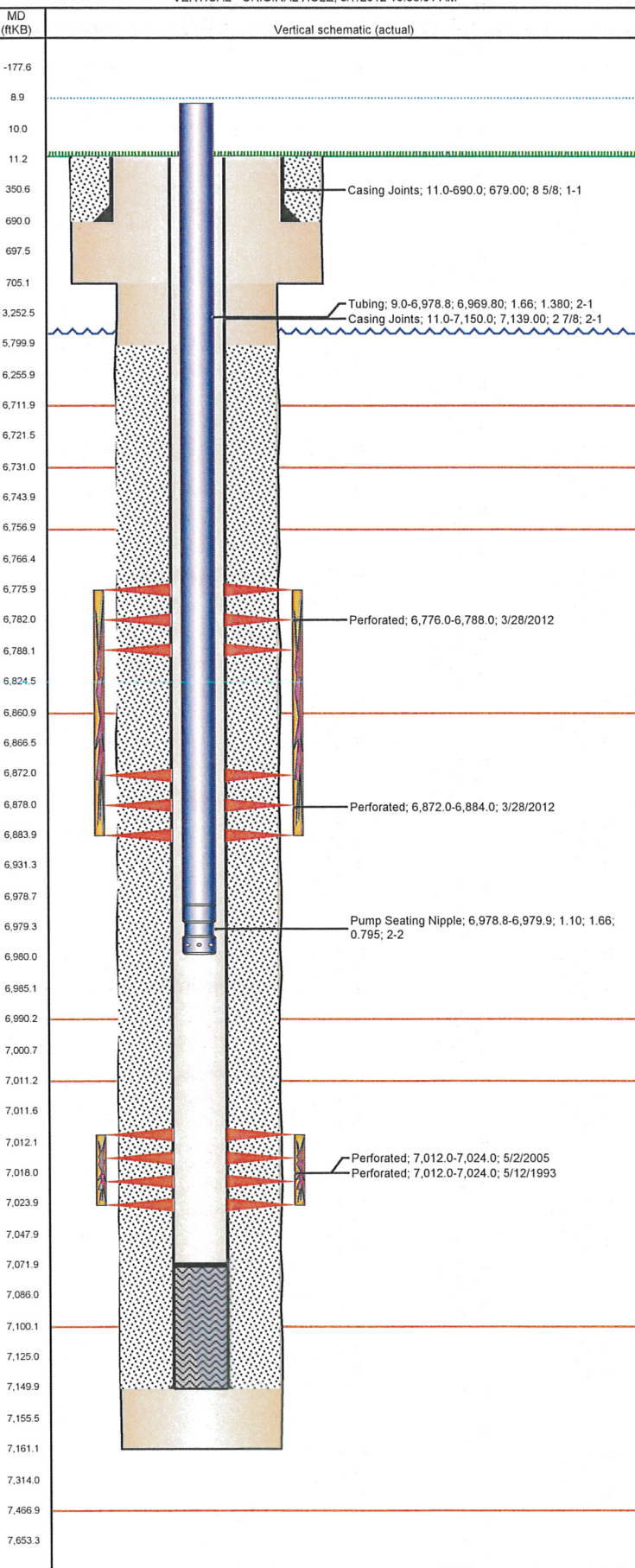


Well Name: CYDNEY WHITE D33-07

VERTICAL - ORIGINAL HOLE, 8/7/2012 10:36:01 AM



## Well Header

API 05-123-16850	Business Unit WATTENBERG	District 15	Well Config VERTICAL
Original KB Elevation (ft) 4,854.00	KB - GL / MSL (ftKB) 11.00	Spud Date 4/26/1993	P & A Date

Comment

## Directions To Well

WCR 34 & WCR 53, ( #1993 ) EAST THUR GATE, SOUTH 2.2 MILES, EAST 0.8, SOUTH 0.9, EAST 0.1, SOUTH & EAST 0.1, SOUTH 0.3 INTO

Current PBTD (ftKB)

ORIGINAL HOLE - 7,072.0

## Surface Location (Congressional)

Quarter 1	Quarter 2	Quarter 3	Quarter 4	Section	Township	Twnshp N...	Range	Rng E/W Dir
		SE	NE	33	3	N	64	W

## Bottom Hole Location

North-South Distance (ft)	From N or S Line	East-West Distance (ft)	From E or W Line

## Plug Back Total Depths

Date	Depth (ftKB)	Method	Com
5/12/1993	7,084.0	CASED HOLE LOG	DEPTH-LOGGER/CBL
3/27/2012	6,932.0	TAG	SAND PLUG OVER CODELL

## Wellbore Sections

Section Des	Size (in)	Act Top (ftKB)	Act Btm (ftKB)
SURFACE	12 1/4	11.0	705.0
PRODUCTION	7 7/8	705.0	7,161.0

## Zone Statuses

Zone Name	Status Date	Status	Job
CODELL	6/22/1993	PR	DRILLING/COMPLETION - ORIGINAL, 4/26/1993 00:00
CODELL	6/22/2005	PR	RE-FRAC, 4/26/2005 00:00
CODELL	3/27/2012	SI	RECOMPLETION, 3/26/2012 06:00
NIOBRARA	4/3/2012	PR	RECOMPLETION, 3/26/2012 06:00

## Casing Strings

Csg Des	Run Date	OD (in)	Wt/Len (lb/ft)	Grade	Top (ftKB)	Set Depth (ftKB)
Surface Casing	4/27/1993	8 5/8	24.00		11.0	690.0
Production	5/1/1993	2 7/8	6.50	N-80	11.0	7,150.0

## Cement

Des	Top (ftKB)	Btm (ftKB)
Surface Casing Cement	11.0	690.0
Production Casing Cement	5,800.0	7,150.0

## Tubing Components

Item Des	OD (in)	Wt (lb/ft)	Grade	Jts	Len (ft)
Tubing	1.66	2.33	J-55	212	6,969.80
Pump Seating Nipple	1.66	2.33	J-55	1	1.10

## Perforation Data

Zone	Bnch/St g	Entered Shot Total	Top (ftKB)	Btm (ftKB)	Date
NIOBRARA, ORIGINAL HOLE	A	48	6,776.0	6,788.0	3/28/2012
NIOBRARA, ORIGINAL HOLE	B	48	6,872.0	6,884.0	3/28/2012
CODELL, ORIGINAL HOLE		49	7,012.0	7,024.0	5/12/1993
CODELL, ORIGINAL HOLE		36	7,012.0	7,024.0	5/2/2005

## Stimulations & Treatments

Bnch/Stg	Date	Zone	Primary Job Type
	5/13/1993	CODELL, ORIGINAL HOLE	DRILLING/COMPLETION - ORIGINAL

Comment

Total Add Amount Proppant 151000 lb	Total Clean Volume...	Vol Slurry Tot (gal) 56364.00	Vol Gas Tot (MCF)
Avg Treat Pressure (psi) 4,750.0	Max Treat Pressure (psi) 5,260.0	Avg Treat Rate (bbl/min) 13.70	Max Treat Rate (bbl/min) 14.50

Bnch/Stg	Date	Zone	Primary Job Type
	5/10/2005	CODELL, ORIGINAL HOLE	RE-FRAC

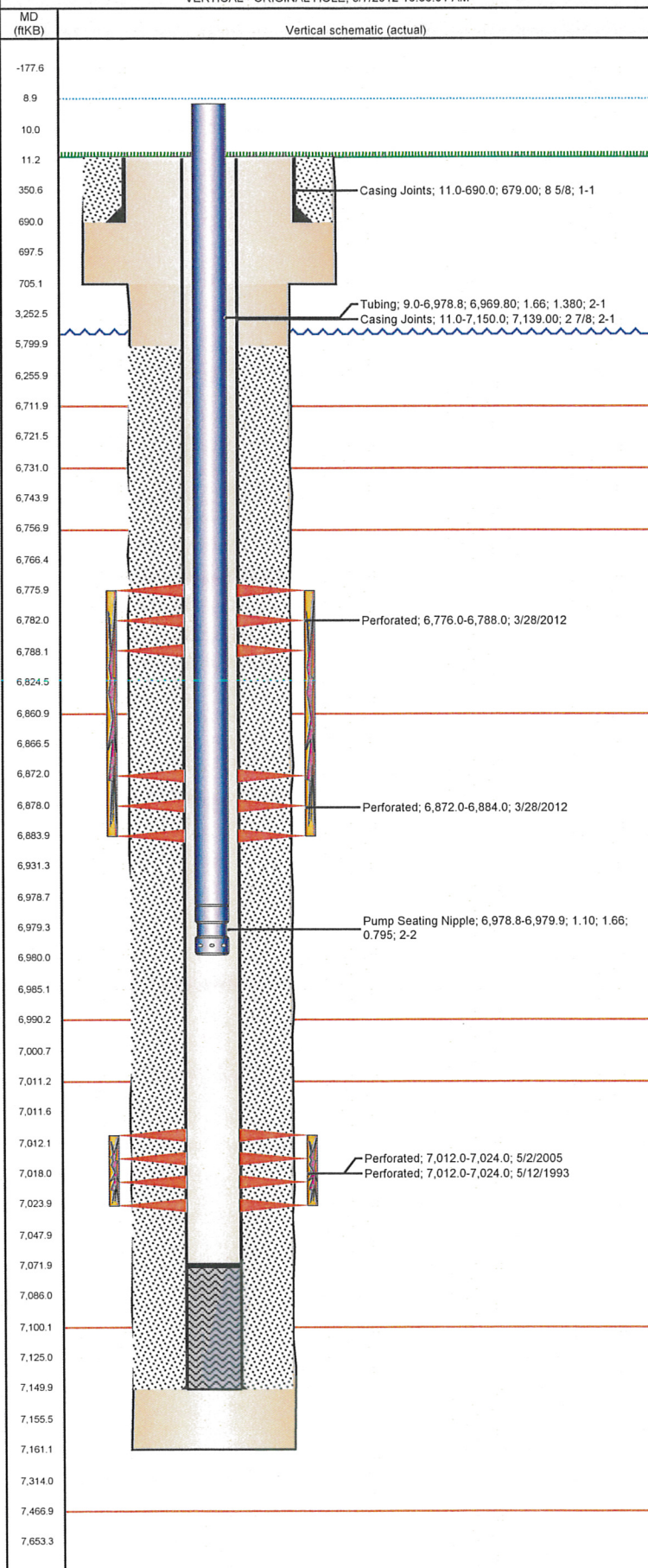
Comment

Total Add Amount Cdl RF dwn csg	Total Clean Volume...	Vol Slurry Tot (gal) 129150.01	Vol Gas Tot (MCF)
Proppant Ottawa 245500 lb			
Avg Treat Pressure (psi) 4,609.0	Max Treat Pressure (psi) 4,923.0	Avg Treat Rate (bbl/min) 14.40	Max Treat Rate (bbl/min) 14.60



Well Name: CYDNEY WHITE D33-07

VERTICAL - ORIGINAL HOLE, 8/7/2012 10:36:01 AM



## Stimulations & Treatments

Bnch/Stg	Date	Zone	Primary Job Type
A,B	3/31/2012	NIOBRARA, ORIGINAL HOLE	RECOMPLETION
<p>Comment</p> <p>(NIOBRARA A,B RC): LOAD &amp; BREAK W/SLICKWATER FOLLOWED WITH 500 GAL 15% HCL, PUSHED THROUGH PERFORATIONS &amp; SHUT DOWN FOR 5 MINUTES. PREJOB ISIP=3541 PSI, 5 MIN=2927 PSI. AFTER COMING BACK ON WITH SLICKWATER AFTER ACID, WE WERE ONLY ABLE TO GET 6-7 BPM, SO I ASKED TO RUN BUFFER WITH THE FR. PRESSURE DECREASED AND WE WERE ABLE TO GET AROUND 11 BPM FOR SLICKWATER PAD. DURING GEL, THERE WAS A DELAYED RESPONSE IN THROTTLING A PUMP, CAUSED A PRESSURE SPIKE THAT EXCEEDED 5,000 PSI. SINCE WE WERE ONLY ABLE TO GET 12- 16 BPM DURING GEL, BREAKER SYSTEM WAS SLIGHTLY MODIFIED TO ENSURE THE GEL WOULDN'T BREAK BEFORE ALL PROPPANT WAS PLACED. PRESSURE CAME UP RIGHT AS HOPPER WAS GOING EMPTY DURING 4 PPG. HAD TO REDUCE RATE DURING FLUSH IN ORDER TO GET FLUSHED. POST JOB ISIP=3761 PSI, 5 MIN= 3627 PSI. JOB AVERAGES: 4585 PSI, 12.3 BPM, 20.2 CP, 10.45 PH, 74.5F. JOB MAX: 5031 PSI, 16.7 BPM.</p>			
Total Add Amount		Total Clean Volume...	Vol Slurry Tot (gal)
Proppant Ottawa 254236.2 lb		149519.59	161037.66
Avg Treat Pressure (psi)		Max Treat Pressure (psi)	Avg Treat Rate (bbl/min)
4,585.0		5,031.0	12.40
		Max Treat Rate (bbl/min)	
		16.70	

## Other In Hole

Run Date	Des	OD (in)	Top (ftKB)	Btm (ftKB)

## Logs

Date	Type	Top (ftKB)	Btm (ftKB)
5/12/1993	CBL/CCL/GR	5,650.0	7,084.0
5/12/1993	COMPENSATED DENSITY	6,300.0	7,135.0
5/12/1993	DUAL INDUCTION	3,900.0	4,500.0