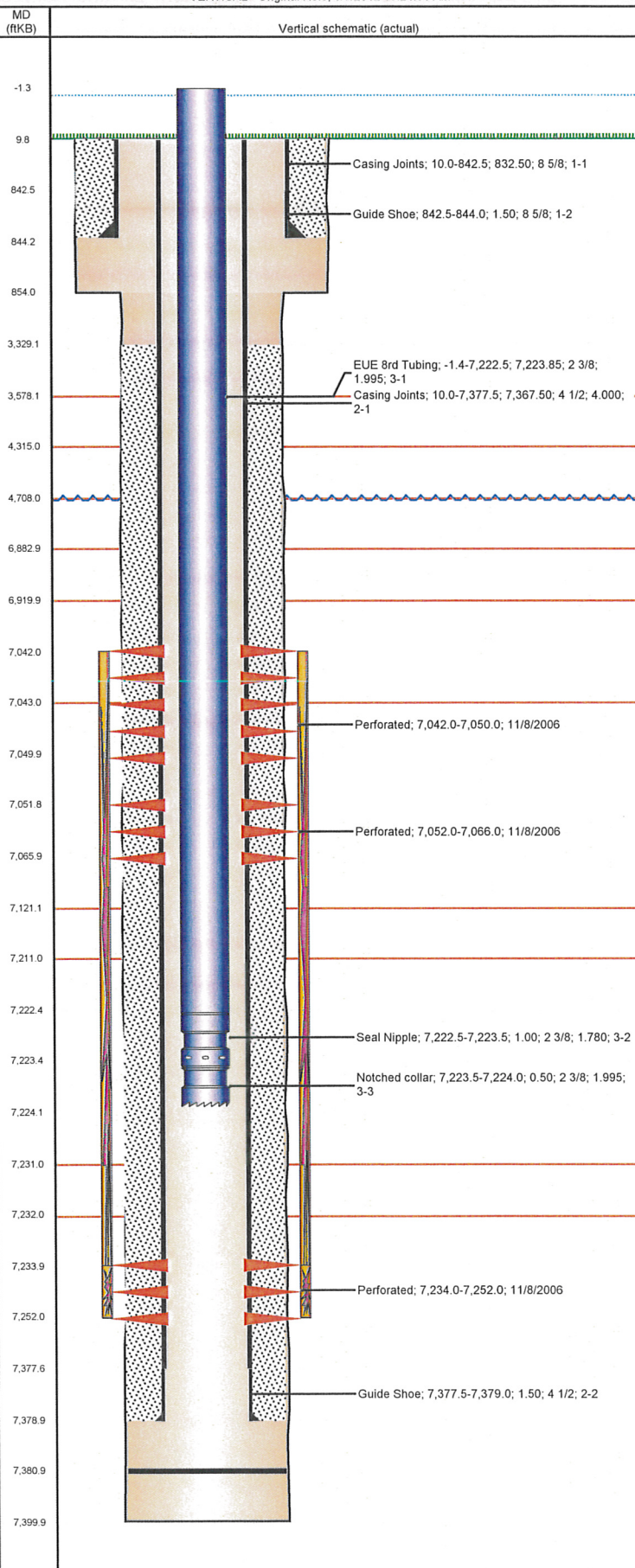


Well Name: KREYKES 13-13

VERTICAL - Original Hole, 8/7/2012 10:24:51 AM



Well Header

API 05-123-23594	Business Unit WATTENBERG	District 15	Well Config VERTICAL
Original KB Elevation (ft) 4,878.00	KB - GL / MSL (ftKB) 10.00	Spud Date 10/10/2006	P & A Date

Comment

Directions To Well

HWY 392 AND WCR 25 NORTH 5/10, W. 2/10, S. 1/10, N, NW 3/10 INTO

Current PBTD (ftKB)

Original Hole - 7,381.0

Surface Location (Congressional)

Quarter 1	Quarter 2	Quarter 3	Quarter 4	Section	Township	Twnshp N...	Range	Rng E/W Dir
		SW	NE	13	6 N		67	W

Bottom Hole Location

North-South Distance (ft)	From N or S Line	East-West Distance (ft)	From E or W Line

Plug Back Total Depths

Date	Depth (ftKB)	Method	Com
10/24/2006	7,378.0	CASING TALLY	GUIDE SHOE
11/7/2006	7,359.0	CASED HOLE LOG	DEPTH LOGGER ON CBL

Wellbore Sections

Section Des	Size (in)	Act Top (ftKB)	Act Btm (ftKB)
SURFACE	12 1/4	10.0	854.0
PRODUCTION	7 7/8	854.0	7,400.0

Zone Statuses

Zone Name	Status Date	Status	Job
CODELL	11/27/2006	PR	DRILLING/COMPLETION - ORIGINAL, 10/10/2006 00:00
CODELL	3/19/2012	PR	RE-FRAC, 1/12/2012 06:00
NIOBRARA	11/27/2006	PR	DRILLING/COMPLETION - ORIGINAL, 10/10/2006 00:00

Casing Strings

Csg Des	Run Date	OD (in)	Wt/Len (lb/ft)	Grade	Top (ftKB)	Set Depth (ftKB)
Surface	10/19/2006	8 5/8	?		10.0	844.0
Production	10/24/2006	4 1/2	11.60	LT&C	10.0	7,379.0

Cement

Des	Top (ftKB)	Btm (ftKB)
SURFACE CASING CEMENT	10.0	844.0
PRODUCTION CASING CEMENT	3,329.0	7,379.0

Tubing Components

Item Des	OD (in)	Wt (lb/ft)	Grade	Jts	Len (ft)
EUE 8rd Tubing	2 3/8	4.70	J-55	216	7,223.85
Seal Nipple	2 3/8	4.70	J-55		1.00
Notched collar	2 3/8	4.70	J-55		0.50

Perforation Data

Zone	Bnch/St g	Entered Shot Total	Top (ftKB)	Btm (ftKB)	Date
NIOBRARA, Original Hole	B	16	7,042.0	7,050.0	11/8/2006
NIOBRARA, Original Hole	B	28	7,052.0	7,066.0	11/8/2006
CODELL, Original Hole		72	7,234.0	7,252.0	11/8/2006

Stimulations & Treatments

Bnch/St g	Date	Zone	Primary Job Type
	11/9/2006	NIOBRARA-CODELL, Original Hole	DRILLING/COMPLETION - ORIGINAL

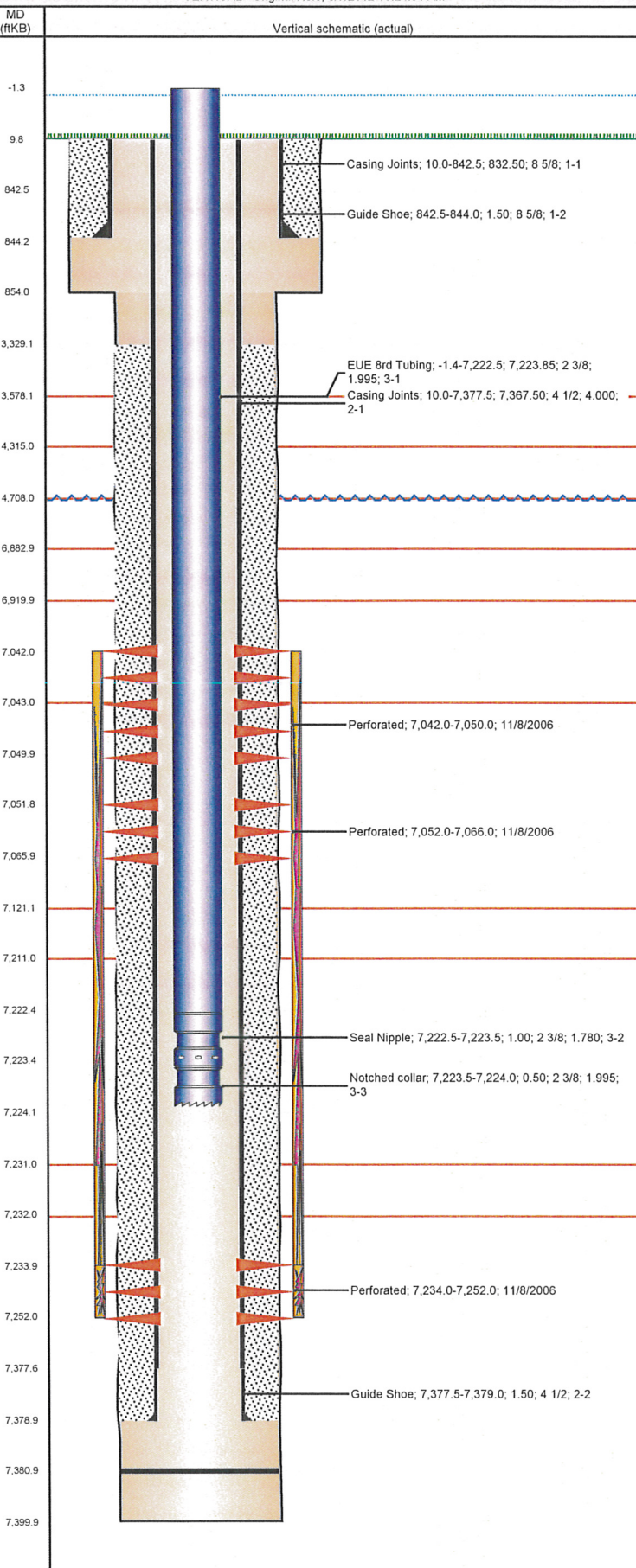
Comment

LIMITED ENTRY

Total Add Amount	Total Clean Volume...	Vol Slurry Tot (gal)	Vol Gas Tot (MCF)
Proppant Ottawa 353456 lb		106512.00	
Avg Treat Pressure (psi)	Max Treat Pressure (psi)	Avg Treat Rate (bbl/min)	Max Treat Rate (bbl/min)
4,398.0	5,055.0	50.80	

Well Name: KREYKES 13-13

VERTICAL - Original Hole, 8/7/2012 10:24:51 AM



Stimulations & Treatments

Bnch/Stg	Date	Zone	Primary Job Type
	2/4/2012	NIOBRARA-CODELL, Original Hole	RE-FRAC
Comment (RE-FRAC CODELL) OPENED WELL AT 13:20 ISIP 1928, 5 MIN 1144, BREAK 3584 RATE 3.8. 27 BL TO LOAD BACK SIDE 31 BL TO LOAD FRAC STRING. AVG PRESS 4843, AVG RATE 14.6, AVG VISC 22.09, AVG PH 10.21, AVG TEMP. 70 DEG. THE FRAC WENT WELL WITH NOTHING FURTHER TO REPORT.			
Total Add Amount	Total Clean Volume...	Vol Slurry Tot (gal)	Vol Gas Tot (MCF)
Proppant Ottawa 250140.8 lb	127335.60	138579.00	
Avg Treat Pressure (psi)	Max Treat Pressure (psi)	Avg Treat Rate (bbl/min)	Max Treat Rate (bbl/min)
4,843.0	4,976.0	14.60	15.00

Other In Hole

Run Date	Des	OD (in)	Top (ftKB)	Btm (ftKB)

Logs

Date	Type	Top (ftKB)	Btm (ftKB)
10/24/2006	COMPENSATED DENSITY	3,550.0	7,379.0
10/24/2006	INDUCTION	10.0	7,399.0
11/7/2006	CEMENT BOND	2.0	1.4