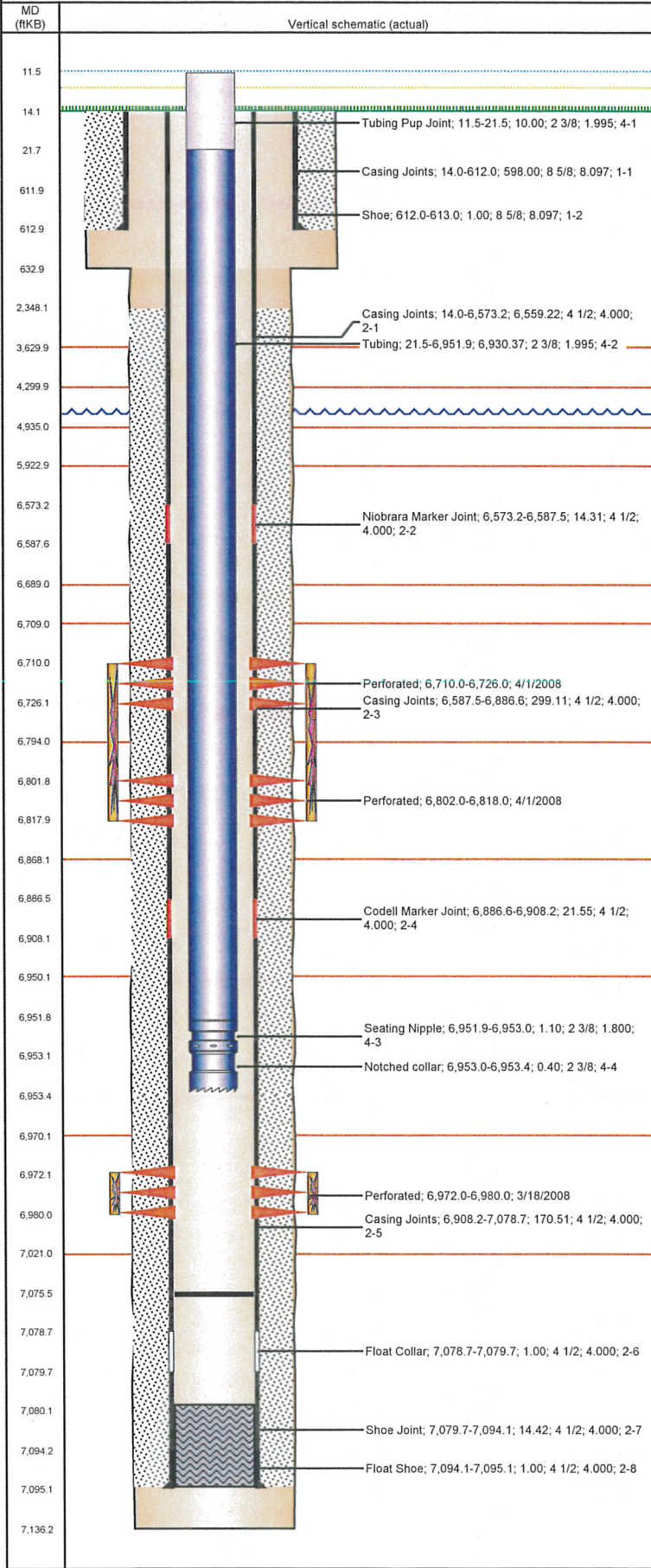


Well Name: SLEDGE C09-28

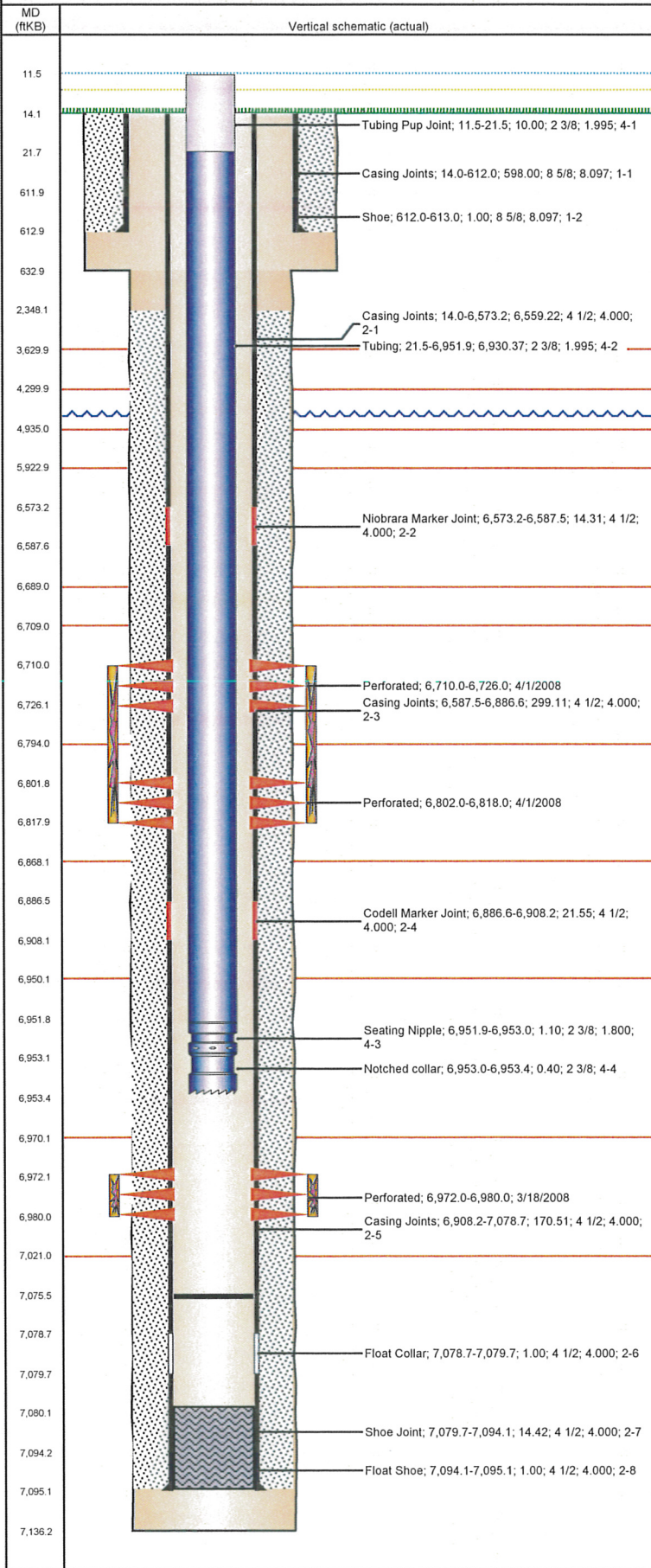
VERTICAL - ORIGINAL HOLE, 8/7/2012 10:02:10 AM



Well Header			
API	Business Unit	District	Well Config
05-123-25509	WATTENBERG	15	VERTICAL
Original KB Elevation (ft)	KB - GL / MSL (ftKB)	Spud Date	P & A Date
4,737.00	14.00	2/27/2008	
Comment			
318Ae LOCATION			
Directions To Well			
WCR 53 & WCR 48, EAST 0.4 MILES, SOUTH 100 FT, WEST 100 FT INTO LOCATION.			
Current PBTD (ftKB)			
ORIGINAL HOLE - 7,075.5			
Surface Location (Congressional)			
Quarter 1	Quarter 2	Quarter 3	Quarter 4
		NE	NW
Section	Township	Twnshp N..	Range
9	4	N	64
Rng E/W Dir	W		
Bottom Hole Location			
North-South Distance (ft)	From N or S Line	East-West Distance (ft)	From E or W Line
Plug Back Total Depths			
Date	Depth (ftKB)	Method	Com
3/10/2008	7,065.0	CASED HOLE LOG	DEPTH LOGGER
5/13/2008	7,080.0	TAG	FLOAT COLLAR
Wellbore Sections			
Section Des	Size (in)	Act Top (ftKB)	Act Btm (ftKB)
SURFACE	12 1/4	14.0	633.0
PRODUCTION	7 7/8	633.0	7,136.0
Zone Statuses			
Zone Name	Status Date	Status	Job
CODELL	4/8/2008	PR	DRILLING/COMPLETION - ORIGINAL, 2/26/2008 20:00
CODELL	2/7/2012	PR	RE-FRAC, 1/5/2012 06:00
NIOBRARA	4/8/2008	PR	DRILLING/COMPLETION - ORIGINAL, 2/26/2008 20:00
Casing Strings			
Csg Des	Run Date	OD (in)	WVLen (lb/ft)
Surface	2/28/2008	8 5/8	24.00
Production	3/3/2008	4 1/2	11.60
Grade	Top (ftKB)	Set Depth (ftKB)	
J-55	14.0	613.0	
M-80	14.0	7,095.1	
Cement			
Des	Top (ftKB)	Btm (ftKB)	
Surface Casing Cement	14.0	613.0	
Production Casing Cement	2,348.0	7,095.1	
Tubing Components			
Item Des	OD (in)	Wt (lb/ft)	Grade
Tubing Pup Joint	2 3/8	4.70	J-55
Tubing	2 3/8	4.70	J-55
Seating Nipple	2 3/8		
Notched collar	2 3/8	4.70	J-55
Jts	Len (ft)		
1	10.00		
224	6,930.37		
1	1.10		
1	0.40		
Perforation Data			
Zone	Bnch/St g	Entered Shot Total	Top (ftKB)
NIOBRARA, ORIGINAL HOLE	A	64	6,710.0
NIOBRARA, ORIGINAL HOLE	B	64	6,802.0
CODELL, ORIGINAL HOLE		32	6,972.0
Btm (ftKB)	Date		
6,726.0	4/1/2008		
6,818.0	4/1/2008		
6,980.0	3/18/2008		
Stimulations & Treatments			
Bnch/Stg	Date	Zone	Primary Job Type
	4/1/2008	CODELL, ORIGINAL HOLE	DRILLING/COMPLETION - ORIGINAL
Comment			
CODELL			
Total Add Amount	Total Clean Volume...	Vol Slurry Tot (gal)	Vol Gas Tot (MCF)
Proppant Ottawa 271963 lb	133644.00	145992.00	
Avg Treat Pressure (psi)	Max Treat Pressure (psi)	Avg Treat Rate (bbl/min)	Max Treat Rate (bbl/min)
3,852.0	4,321.0	18.40	19.00
Bnch/Stg	Date	Zone	Primary Job Type
	4/1/2008	NIOBRARA, ORIGINAL HOLE	DRILLING/COMPLETION - ORIGINAL
Comment			
NIOBRARA			
Total Add Amount	Total Clean Volume...	Vol Slurry Tot (gal)	Vol Gas Tot (MCF)
Proppant Ottawa 254327 lb	173376.00	184968.01	
Avg Treat Pressure (psi)	Max Treat Pressure (psi)	Avg Treat Rate (bbl/min)	Max Treat Rate (bbl/min)
4,697.0	4,912.0	49.70	50.20

Well Name: SLEDGE C09-28

VERTICAL - ORIGINAL HOLE, 8/7/2012 10:02:11 AM



Stimulations & Treatments

Bnch/Stg	Date	Zone	Primary Job Type
	1/13/2012	CODELL, ORIGINAL HOLE	RE-FRAC
Comment			
(COD) HAD A pH SPIKE DURING PAD, THE OPERATOR WENT TO A 7.5 GPT LOADING INSTEAD OF A 0.75 LOADING ON THE BF-9L. RAISED THE GEL LOADING FROM A 5.75 GPT TO 6 GPT VISC WAS AT 20 CPS AT A 23# LOADING. WE DID NOT MAKE ANY OF THE SCHEDULED GEL CHANGES AS BHP WAS FAIRLY FLAT. RAN THE 3 PSA STAGE AS A 2-4 PSA RAMP STAGE. TREATMENT WENT WELL. AVG VISC 22.6 CPS, AVG TEMP 71.6F, AVG PH 10.24, AVG PRESS 5195 PSI, AVG RATE 14.8 BPM.			
Total Add Amount	Total Clean Volume...	Vol Slurry Tot (gal)	Vol Gas Tot (MCF)
Proppant Ottawa 238547 lb	128730.01	139524.00	
Avg Treat Pressure (psi)	Max Treat Pressure (psi)	Avg Treat Rate (bbl/min)	Max Treat Rate (bbl/min)
5,195.0	6,001.0	14.80	15.80

Other In Hole

Run Date	Des	OD (in)	Top (ftKB)	Btm (ftKB)

Logs

Date	Type	Top (ftKB)	Btm (ftKB)
3/2/2008	Caliper/Comp. Density/Neutron/GR/SP/ML	2,600.0	7,117.0
3/2/2008	DIL/GR/SP/Caliper	614.0	7,137.0
3/10/2008	CBL/CCL/GR	2,150.0	7,065.0