

GREAT WESTERN OIL & GAS COMPANY

LOCATION DRAWING FOR

ANDREWS #26-13, #26-14, #26-23,
#26-24, & #26-53

SECTION 26, T7N, R65W, 6th P.M.

SE 1/4 SW 1/4

FIGURE #4



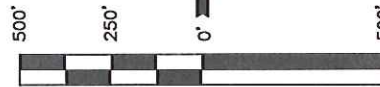
2005 Alum. Cap
0.4' Below Ground,
PLS #37068
Lat: 40.546178°
Long: 104.639811°

1/4 Section Line

26

LINE TABLE

LINE	FEATURE	DIRECTION	LENGTH
L1	POWER LINE	N53°W	203'
L2	PROPERTY LINE	N57°W	256'
L3	COUNTY ROAD 76	S04°W	910'
L4	BUILDING	S02°W	629'
L5	IRRIGATION DITCH	N50°W	179'



SCALE

DATE: 03-12-12

DRAWN BY: T.B.

REVISED: 04-06-12

REVISED: 04-11-12

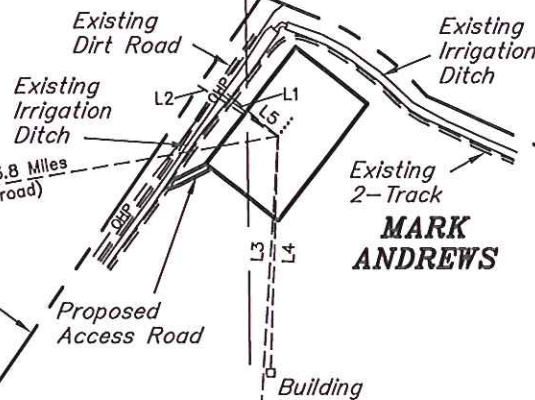
N00°35'47"W - 2723.11' (Meas.)

Section Line

1/16 Section Line

1/16 Section Line

1/4 Section Line



2012 Alum. Cap
1.0' Below Ground,
LS #26285
Lat: 40.538706°
Long: 104.639811°

Section Line

N86°25'45"W - 2693.19' (Meas.)

County Road 76

2006 Alum. Cap
0.4' Below Ground,
LS #7242
Lat: 40.538169°
Long: 104.630150°

PLANT COMMUNITY

- ☐ DISTURBED GRASSLAND
- ☐ NATIVE GRASSLAND
- ☐ SHRUB LAND
- ☐ PLAINS RIPARIAN
- ☐ MOUNTAIN RIPARIAN
- ☐ FOREST LAND
- ☐ WETLANDS AQUATIC
- ☐ ALPINE
- ☐ OTHER (Describe): _____

CURRENT LAND USE

- CROP LAND: ☐ IRRIGATED ☐ DRY LAND ☐ IMPROVED PASTURE ☐ HAY MEADOW ☐ CRP
- NON-CROP LAND: ☐ RANGELAND ☐ TIMBER ☐ RECREATIONAL ☐ OTHER (Describe) _____
- SUBDIVIDED: ☐ INDUSTRIAL ☐ COMMERCIAL ☐ RESIDENTIAL _____

FUTURE LAND USE

- CROP LAND: ☐ IRRIGATED ☐ DRY LAND ☐ IMPROVED PASTURE ☐ HAY MEADOW ☐ CRP
- NON-CROP LAND: ☐ RANGELAND ☐ TIMBER ☐ RECREATIONAL ☐ OTHER (Describe) _____
- SUBDIVIDED: ☐ INDUSTRIAL ☐ COMMERCIAL ☐ RESIDENTIAL _____

UINTAH ENGINEERING & LAND SURVEYING

85 So. 200 East * Vernal, Utah 84078 * (435) 789-1017