

WHITING OIL & GAS CORP.

CONSTRUCTION LAYOUT FOR

RAZOR #14-1143H

SECTION 14, T10N, R58W, 6th P.M.

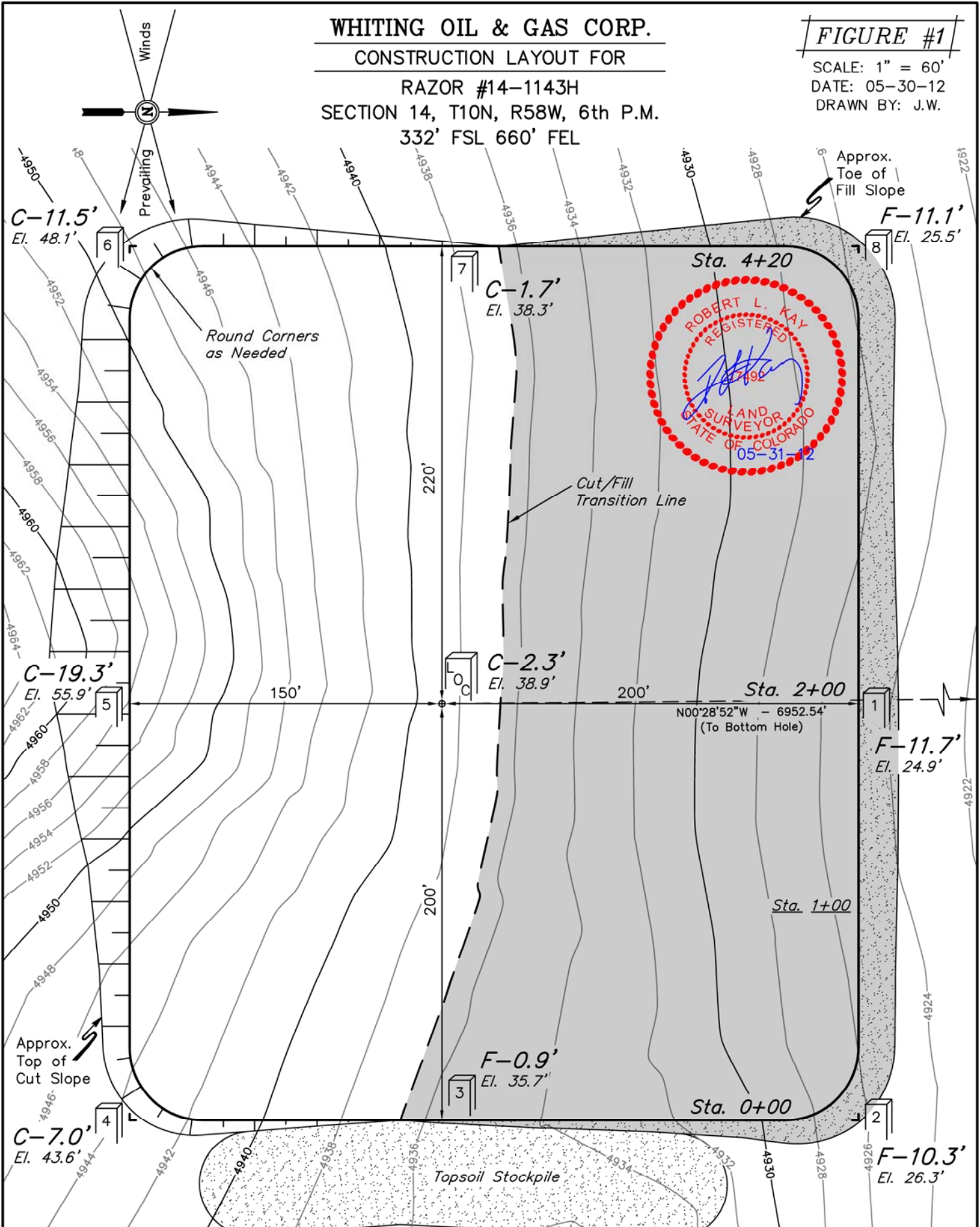
332' FSL 660' FEL

FIGURE #1

SCALE: 1" = 60'

DATE: 05-30-12

DRAWN BY: J.W.



Elev. Ungraded Ground At Loc. Stake = 4938.9'
FINISHED GRADE ELEV. AT LOC. STAKE = 4936.6'

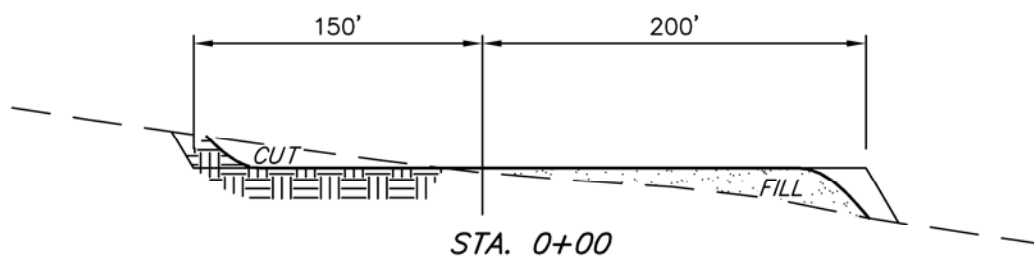
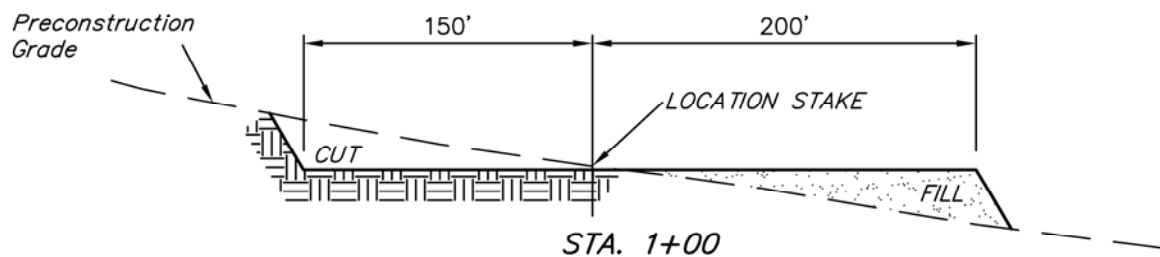
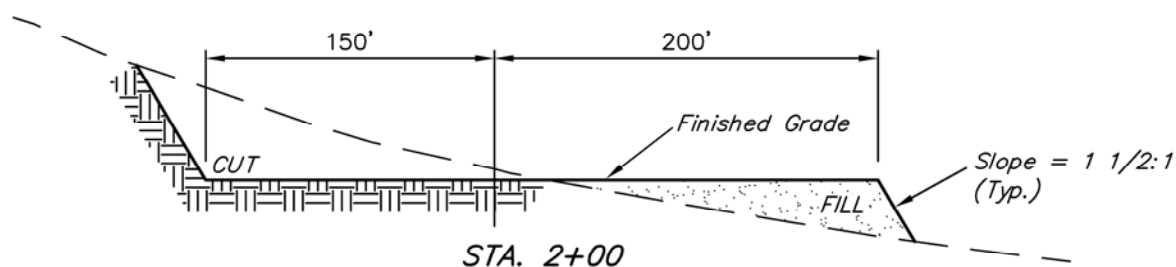
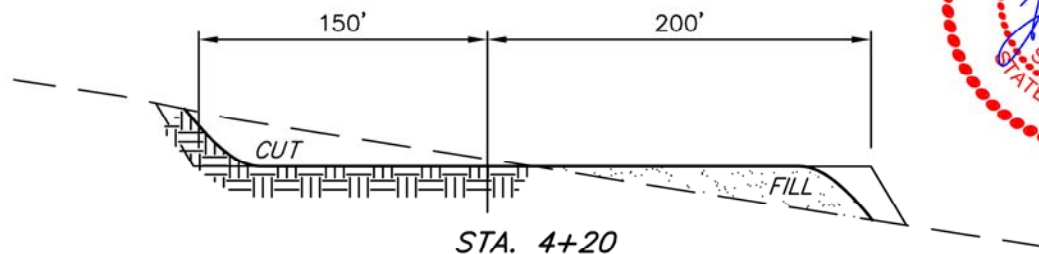
UINTAH ENGINEERING & LAND SURVEYING
85 So. 200 East * Vernal, Utah 84078 * (435) 789-1017

1" = 40'
X-Section
Scale
1" = 100'

DATE: 05-30-12
DRAWN BY: J.W.

WHITING OIL & GAS CORP.
CONSTRUCTION LAYOUT CROSS SECTIONS FOR
RAZOR #14-1143H
SECTION 14, T10N, R58W, 6th P.M.
332' FSL 660' FEL

FIGURE #2



NOTE:

Topsoil should not be Stripped Below Finished Grade on Substructure Area.

APPROXIMATE ACREAGES
WELL SITE DISTURBANCE = ± 4.153 ACRES

*** NOTE:**
FILL QUANTITY INCLUDES 5% FOR COMPACTION

APPROXIMATE YARDAGES

(6") Topsoil Stripping = 3,130 Cu. Yds.
Remaining Location = 19,110 Cu. Yds.
TOTAL CUT = 22,240 CU. YDS.
FILL = 19,110 CU. YDS.

EXCESS MATERIAL = 3,130 Cu. Yds.
Topsoil = 3,130 Cu. Yds.

EXCESS UNBALANCE = 0 Cu. Yds.
(After Interim Rehabilitation)

UINTAH ENGINEERING & LAND SURVEYING
85 So. 200 East * Vernal, Utah 84078 * (435) 789-1017