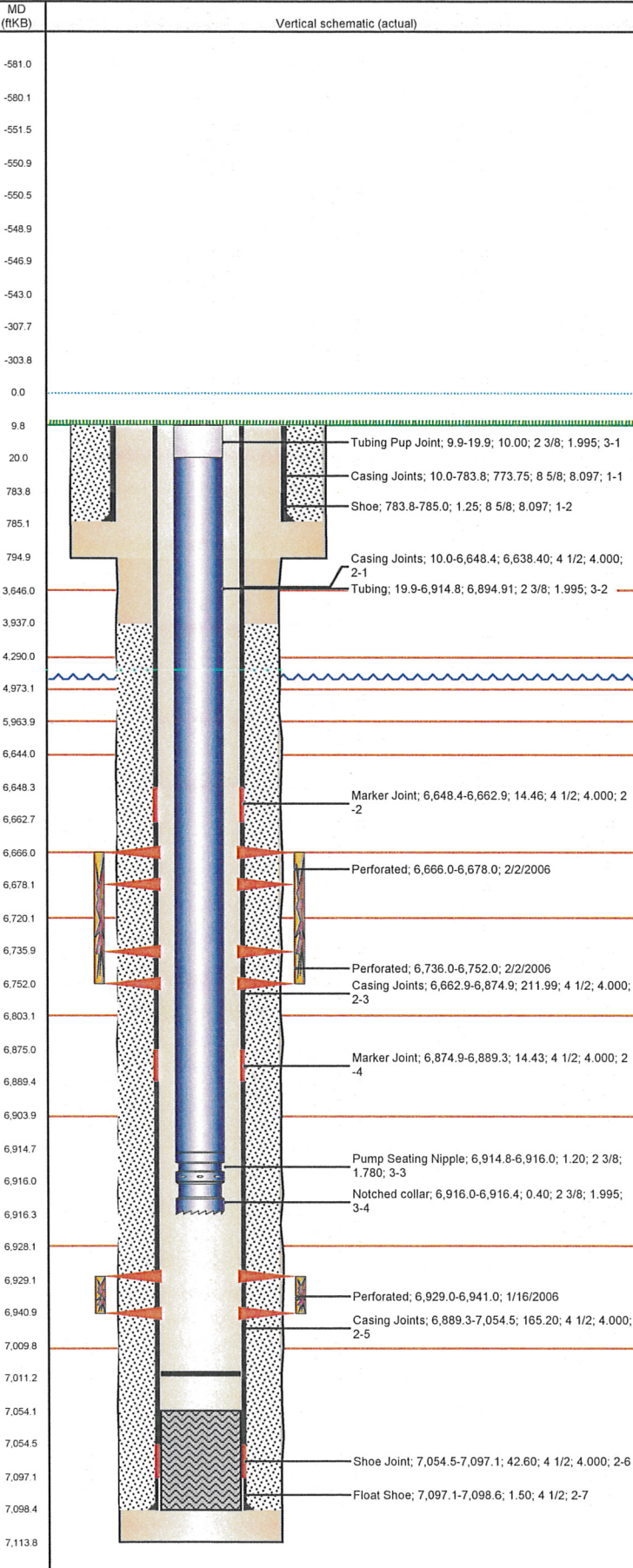


Well Name: JULIE C21-25

VERTICAL - ORIGINAL HOLE, 8/7/2012 9:40:00 AM



Well Header

API 05-123-23402	Business Unit WATTENBERG	District 15	Well Config VERTICAL
Original KB Elevation (ft) 4,770.00	KB - GL / MSL (ftKB) 10.00	Spud Date 1/4/2006	P & A Date

Comment

push CFP to 7045 3/06

Directions To Well

WCR 42 & 53, EAST 0.3, NORTH 0.1, WEST 0.1, NORTH 0.1 INTO.

Current PBTD (ftKB)

ORIGINAL HOLE - 7,011.0

Surface Location (Congressional)

Quarter 1	Quarter 2	Quarter 3	Quarter 4	Section	Township	Twship N...	Range	Rng E/W Dir
	SE	SW		21	4 N		64	W

Bottom Hole Location

North-South Distance (ft)	From N or S Line	East-West Distance (ft)	From E or W Line

Plug Back Total Depths

Date	Depth (ftKB)	Method	Com
1/8/2006	7,054.0	CASING TALLY	LATCH DOWN COLLAR
1/16/2006	7,002.0	CASED HOLE LOG	DEPTH LOGGER

Wellbore Sections

Section Des	Size (in)	Act Top (ftKB)	Act Btm (ftKB)
SURFACE	12 1/4	10.0	795.0
PRODUCTION	7 7/8	795.0	7,114.0

Zone Statuses

Zone Name	Status Date	Status	Job
CODELL	2/6/2006	PR	DRILLING/COMPLETION - ORIGINAL, 1/4/2006 00:00
CODELL	4/5/2012	PR	RE-FRAC, 3/8/2012 06:00
NIOBRARA	2/6/2006	PR	DRILLING/COMPLETION - ORIGINAL, 1/4/2006 00:00

Casing Strings

Csg Des	Run Date	OD (in)	Wt/Len (lb/ft)	Grade	Top (ftKB)	Set Depth (ftKB)
Surface	1/5/2006	8 5/8	24.00	J-55	10.0	785.0
Production	1/8/2006	4 1/2	11.60	M-80	10.0	7,098.6

Cement

Des	Top (ftKB)	Btm (ftKB)
SURFACE CASING CEMENT	10.0	785.0
PRODUCTION CASING CEMENT	3,937.0	7,098.6

Tubing Components

Item Des	OD (in)	Wt (lb/ft)	Grade	Jts	Len (ft)
Tubing Pup Joint	2 3/8	4.70	J-55	1	10.00
Tubing	2 3/8	4.70	J-55	209	6,894.91
Pump Seating Nipple	2 3/8	4.70	N-80	1	1.20
Notched collar	2 3/8	4.70	J-55	1	0.40

Perforation Data

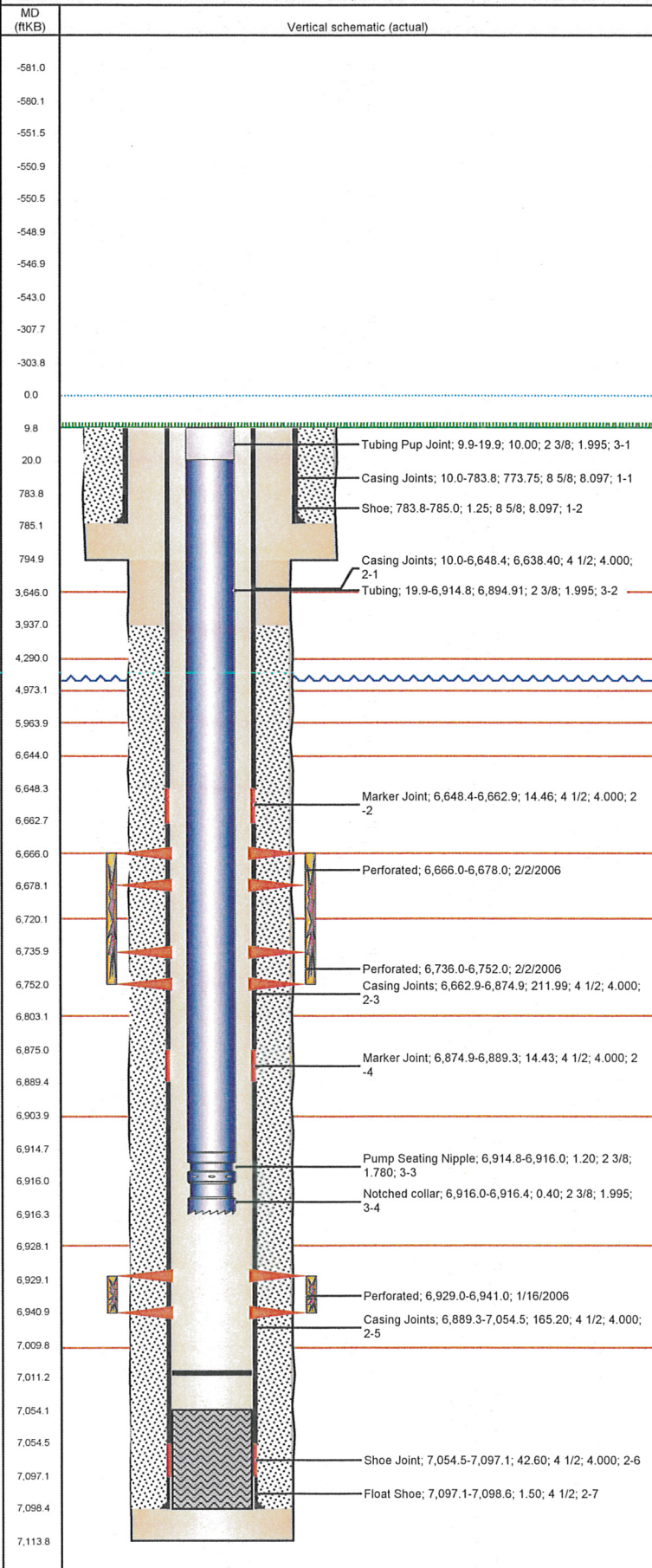
Zone	Bnch/St g	Entered Shot Total	Top (ftKB)	Btm (ftKB)	Date
NIOBRARA, ORIGINAL HOLE	A	72	6,666.0	6,678.0	2/2/2006
NIOBRARA, ORIGINAL HOLE	B	96	6,736.0	6,752.0	2/2/2006
CODELL, ORIGINAL HOLE		48	6,929.0	6,941.0	1/16/2006

Stimulations & Treatments

Bnch/Stg	Date	Zone	Primary Job Type
	2/2/2006	CODELL, ORIGINAL HOLE	DRILLING/COMPLETION - ORIGINAL
Comment			
Total Add Amount		Total Clean Volume...	Vol Slurry Tot (gal)
Proppant Ottawa 270460 lb			128310.01
Avg Treat Pressure (psi)	Max Treat Pressure (psi)	Avg Treat Rate (bbl/min)	Max Treat Rate (bbl/min)
3,868.0	4,127.0	13.90	14.90
Bnch/Stg	Date	Zone	Primary Job Type
	2/2/2006	NIOBRARA, ORIGINAL HOLE	DRILLING/COMPLETION - ORIGINAL
Comment			
Total Add Amount		Total Clean Volume...	Vol Slurry Tot (gal)
Proppant 238220 lb; Proppant SB Excel 12000 lb			171402.01
Avg Treat Pressure (psi)	Max Treat Pressure (psi)	Avg Treat Rate (bbl/min)	Max Treat Rate (bbl/min)
4,700.0	5,128.0	44.80	50.10

Well Name: JULIE C21-25

VERTICAL - ORIGINAL HOLE, 8/7/2012 9:40:01 AM



Stimulations & Treatments				
Bnch/Stg	Date	Zone	Primary Job Type	
	3/14/2012	CODELL, ORIGINAL HOLE	RE-FRAC	
Comment				
(CODELL RF)- BREAK 5178 @ 6.0, ISIP 3483, 5 MIN 1686, POST JOB ISIP 4129, POST JOB 5 MIN 4026. AVER VISC 22.8, AVER PH 10.10, AVER TEMP 63.23. POP OFF WOULD NOT HOLD PRESSURE DURING PRESSURE TEST. WAITED FOR NEW ONE BEFORE CONTINUING. LOAD ANNULUS TO TEST PACKER, BOP DID NOT HOLD. REPLACED RUBBERS, PRESSURED UP AND BOP FAILED AGAIN. ADDED WASHINGTON RUBBER AND PRESSURED UP TO APPROX 600#. FOUND A LEAK ON THE TOP OF THE COLLAR BETWEEN THE TUBING AND FRAC VALVE. BLEDWELL DOWN AND TIGHTENED COLLAR. TANKS WERE AT A LEAN, ORDERED AN EXTRA 450 BBL TO BE SAFE.				
Total Add Amount		Total Clean Volume...	Vol Slurry Tot (gal)	Vol Gas Tot (MCF)
Proppant Ottawa		129408.72	140087.64	
235866.193 lb				
Avg Treat Pressure (psi)	Max Treat Pressure (psi)	Avg Treat Rate (bbl/min)	Max Treat Rate (bbl/min)	
5,170.0	5,457.0	14.77	15.07	
Other In Hole				
Run Date	Des	OD (in)	Top (ftKB)	Btm (ftKB)
Logs				
Date	Type	Top (ftKB)	Btm (ftKB)	
1/8/2006	COMPENSATED DENSITY	4,000.0	7,106.0	
1/8/2006	INDUCTION	785.0	7,106.0	
1/16/2006	CBL/CCL/GR	3,800.0	7,002.0	