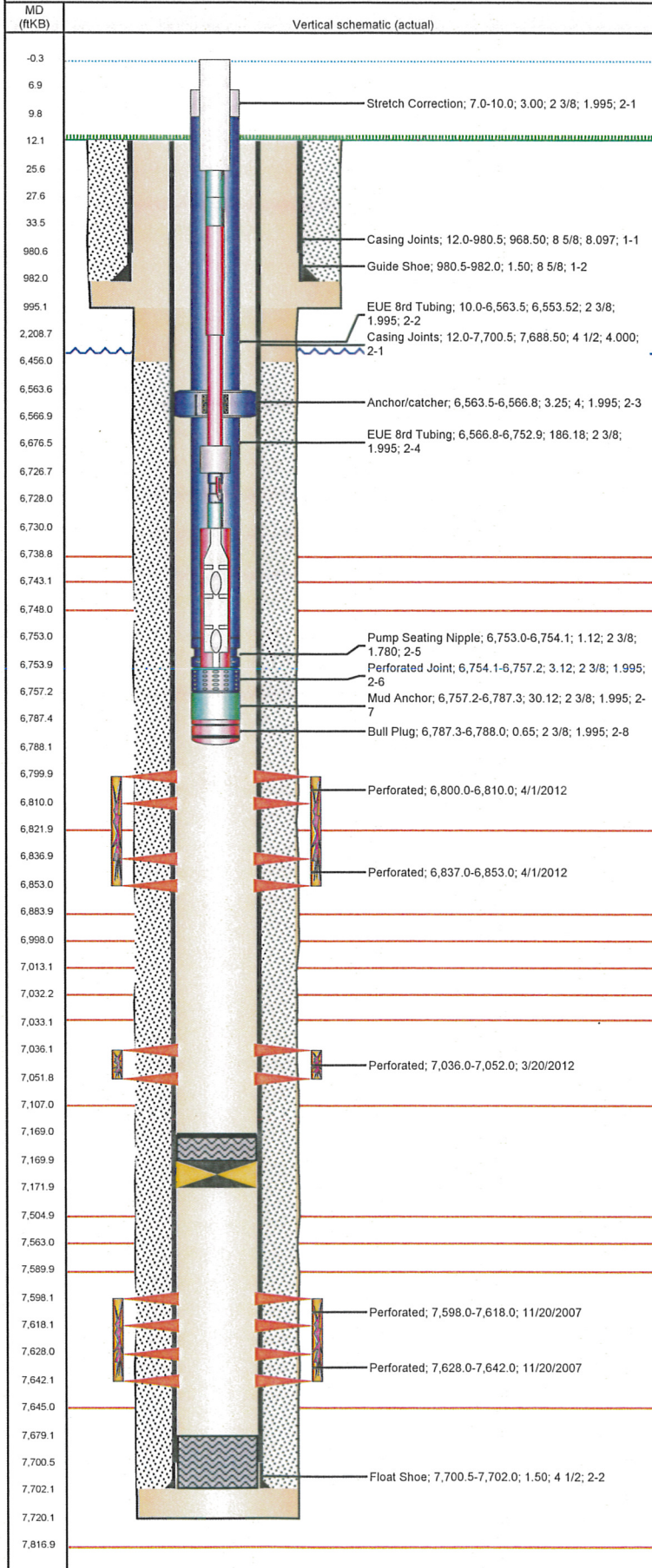


**Well Name: CFM-RAY 15-20**

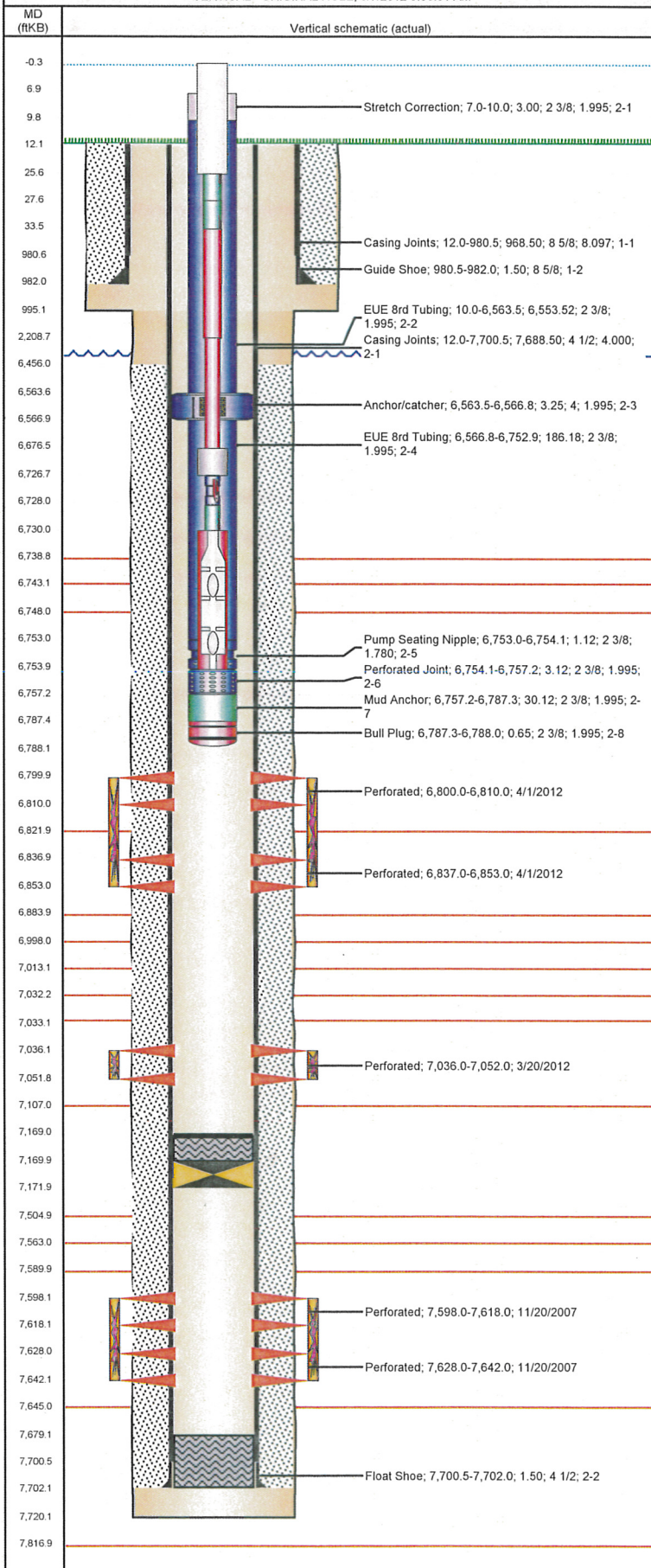
VERTICAL - ORIGINAL HOLE, 8/7/2012 9:06:00 AM



Well Header			
API	Business Unit	District	Well Config
05-123-24347	WATTENBERG	25	VERTICAL
Original KB Elevation (ft)	KB - GL / MSL (ftKB)	Spud Date	P & A Date
5,148.00	12.00	10/13/2007	
Comment			
Directions To Well			
WCR 89 & WCR 122, NORTH ON 89, 2.25 MILES, WEST 0.4 MILES, AND SOUTH INTO.			
Current PBTD (ftKB)			
ORIGINAL HOLE - 7,169.0			
Surface Location (Congressional)			
Quarter 1	Quarter 2	Quarter 3	Quarter 4
	SW	SE	
Section	Township	Twnshp N...	Range
20		N	61
Rng E/W Dir			
W			
Bottom Hole Location			
North-South Distance (ft)	From N or S Line	East-West Distance (ft)	From E or W Line
Plug Back Total Depths			
Date	Depth (ftKB)	Method	Com
10/19/2007	7,679.0	CASING TALLY	GUIDE SHOE
11/13/2007	7,679.0	CASED HOLE LOG	DEPTH LOGGER
Wellbore Sections			
Section Des	Size (in)	Act Top (ftKB)	Act Btm (ftKB)
SURFACE	12 1/4	12.0	995.0
PRODUCTION	7 7/8	995.0	7,720.0
Zone Statuses			
Zone Name	Status Date	Status	Job
J SAND	12/9/2007	PR	DRILLING/COMPLETION - ORIGINAL, 10/13/2007 00:00
J SAND	3/20/2012	AB	RECOMPLETION, 3/15/2012 15:00
CODELL	4/1/2012	PR	RECOMPLETION, 3/15/2012 15:00
NIOBRARA	4/1/2012	PR	RECOMPLETION, 3/15/2012 15:00
Casing Strings			
Csg Des	Run Date	OD (in)	Wt/Len (lb/ft)
Surface	10/14/2007	8 5/8	24.00
Production	10/18/2007	4 1/2	11.60
Grade	Top (ftKB)	Set Depth (ftKB)	
N-80	12.0	7,702.0	
Cement			
Des	Top (ftKB)	Btm (ftKB)	
SURFACE CASING CEMENT	12.0	982.0	
PRODUCTION CASING CEMENT	6,456.0	7,702.0	
Dump Bail	7,169.0	7,170.0	
Tubing Components			
Item Des	OD (in)	Wt (lb/ft)	Grade
Stretch Correction	2 3/8	4.70	J-55
EUE 8rd Tubing	2 3/8	4.70	J-55
Anchor/catcher	4	4.70	J-55
EUE 8rd Tubing	2 3/8	4.70	J-55
Pump Seating Nipple	2 3/8	4.70	J-55
Perforated Joint	2 3/8	4.70	J-55
Mud Anchor	2 3/8	4.70	J-55
Bull Plug	2 3/8	4.70	J-55
Jts	Len (ft)		
1	3.00		
210	6,553.52		
1	3.25		
6	186.18		
1	1.12		
1	3.12		
1	30.12		
1	0.65		
Rods & Pumps			
Rod Description	Run Date	Set Depth (ftKB)	
Rod	4/12/2012	6,754.1	
Comment			
Item Description	OD Nominal (in)	Joints	Length (ft)
Polished Rod	1 1/2	1	26.00
Item Description	OD Nominal (in)	Joints	Length (ft)
Pony Rod	7/8	1	2.00
Item Description	OD Nominal (in)	Joints	Length (ft)
Pony Rod	7/8	1	6.00
Item Description	OD Nominal (in)	Joints	Length (ft)
Sucker Rod	7/8	87	2,175.00
Item Description	OD Nominal (in)	Joints	Length (ft)
Sucker Rod	3/4	178	4,468.00
Item Description	OD Nominal (in)	Joints	Length (ft)
Sinker Bar	1 1/2	2	50.00

**Well Name: CFM-RAY 15-20**

VERTICAL - ORIGINAL HOLE, 8/7/2012 9:06:01 AM



Item Description	OD Nominal (in)	Joints	Length (ft)
Hooks Tool	3/4	1	1.50
Item Description	OD Nominal (in)	Joints	Length (ft)
Pony Rod	3/4	1	2.00
Item Description	OD Nominal (in)	Joints	Length (ft)
Rod Insert Pump	1 1/2	1	24.00
API Pump Type	Barrel Length (ft)	Seating Assembly Type	
R	24.00	C	

Perforation Data					
Zone	Bnch/Stg	Entered Shot Total	Top (ftKB)	Btm (ftKB)	Date
NIOBRARA, ORIGINAL HOLE		20	6,800.0	6,810.0	4/1/2012
NIOBRARA, ORIGINAL HOLE		20	6,837.0	6,853.0	4/1/2012
CODELL, ORIGINAL HOLE		64	7,036.0	7,052.0	3/20/2012
J SAND, ORIGINAL HOLE		80	7,598.0	7,618.0	11/20/2007
J SAND, ORIGINAL HOLE		56	7,628.0	7,642.0	11/20/2007

Stimulations & Treatments			
Bnch/Stg	Date	Zone	Primary Job Type
	11/21/2007	J SAND, ORIGINAL HOLE	DRILLING/COMPLETION - ORIGINAL

**Comment**  
ACIDIZATION BY MAVERICK

Total Add Amount	Total Clean Volume...	Vol Slurry Tot (gal)	Vol Gas Tot (MCF)
236000 236000		149772.00	
Avg Treat Pressure (psi)	Max Treat Pressure (psi)	Avg Treat Rate (bbl/min)	Max Treat Rate (bbl/min)
3,350.0	3,931.0	49.50	50.70

Bnch/Stg	Date	Zone	Primary Job Type
	4/1/2012	CODELL, ORIGINAL HOLE	RECOMPLETION

**Comment**  
CODELL : REVERSE STEP @ 165 BBLs AWAY , ISIP = 2625 , FG = 0.81 , 5 MIN = 2268 , PERFS OPEN = 64 , NEAR WELL BORE = 491 , PERF FRICTION = 7.8 , WELLBORE FRICTION = 361 , TOTAL FRICTION = 860 . INCREASED THE PUMP RATE TO 22 BPM DUE TO THE LOW 5 MIN PRESSURE. THE JOB WENT WELL NO ISSUES TO REPORT. FINAL ISIP = 2883 , FINAL FG = 0.84 , FINAL 5 MIN = 2824

Total Add Amount	Total Clean Volume...	Vol Slurry Tot (gal)	Vol Gas Tot (MCF)
Proppant Ottawa 240403 lb	112308.00	123186.00	
Avg Treat Pressure (psi)	Max Treat Pressure (psi)	Avg Treat Rate (bbl/min)	Max Treat Rate (bbl/min)
2,910.0	4,192.0	22.37	22.70

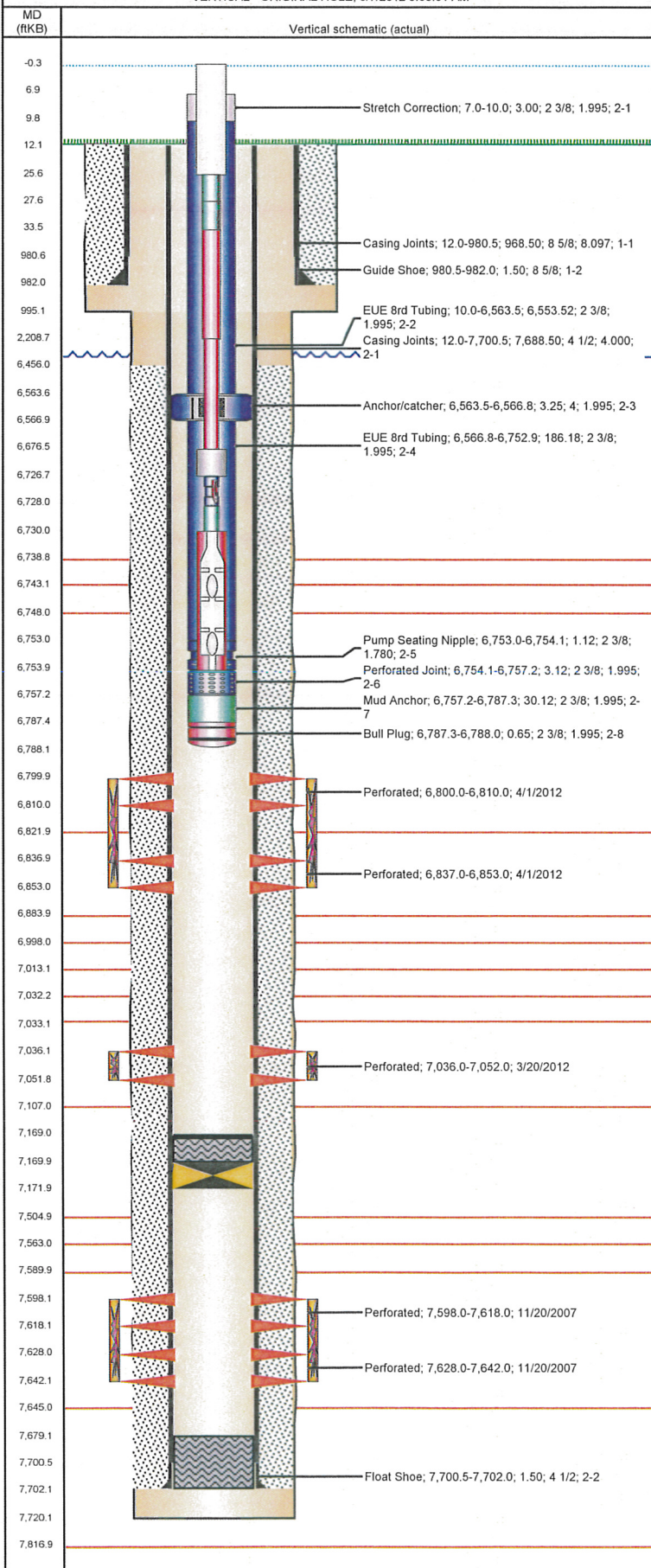
**Well Name: CFM-RAY 15-20**

VERTICAL - ORIGINAL HOLE, 8/7/2012 9:06:01 AM

**Stimulations & Treatments**

Bnch/Stg	Date	Zone	Primary Job Type
	4/1/2012	NIOBRARA, ORIGINAL HOLE	RECOMPLETION

**Comment**  
 NIOBRARA : ISIP @ 197 BBLS AWAY . ISIP = 2837, FG = 0.85 ( POST-JOB )  
 THE JOB WENT WELL NO ISSUES TO REPORT . FINAL ISIP = 3083 ,  
 FINAL FG = 0.886 , FINAL 5 MIN = 2771 .



Total Add Amount	Total Clean Volume...	Voi Slurry Tot (gal)	Voi Gas Tot (MCF)
0; Proppant Ottawa 251542 lb	156198.01	167580.01	

Avg Treat Pressure (psi)	Max Treat Pressure (psi)	Avg Treat Rate (bbl/min)	Max Treat Rate (bbl/min)
4,010.0	4,731.0	50.78	51.22

**Other In Hole**

Run Date	Des	OD (in)	Top (ftKB)	Btm (ftKB)
3/20/2012	Cast Iron Bridge Plug	4	7,170.0	7,172.0

**Logs**

Date	Type	Top (ftKB)	Btm (ftKB)
10/17/2007	COMPENSATED DENSITY	3,790.0	7,695.0
10/17/2007	INDUCTION	982.0	7,715.0
11/13/2007	CBL/CCL/GR	6,260.0	7,676.0