

Schlumberger

Company: **Kerr-McGee Oil & Gas Onshore LP**

Well: **Cannon 36N-11HZ**

Field: **Wattenberg**

County: **Weld**

State: **Colorado**

County: Weld
 Field: Wattenberg
 Location: SHL: 610' FNL X 676' FWL NWN
 Well: Cannon 36N-11HZ
 Company: Kerr-McGee Oil & Gas Onshore

**PPC
Caliper**

LOCATION		Elev.:	K.B. 5059.00 ft
SHL: 610' FNL X 676' FWL NWNW		G.L. 5042.00 ft	
Lat/Long: 40.158321/-104.751377		D.F. 5058.00 ft	
Permanent Datum:	Ground Level	Elev.:	5042.00 ft
Log Measured From:	Kelly Bushing	17.00 ft	above Perm. Datum
Drilling Measured From:	Kelly Bushing		

API Serial No. 05123343300000	Section 11	Township 2N	Range 66W
----------------------------------	---------------	----------------	--------------

Logging Date	16-Jan-2012		
Run Number	1		
Depth Driller	12028 ft		
Schlumberger Depth	1200 ft		
Bottom Log Interval	12000 ft		
Top Log Interval	7802 ft		
Casing Driller Size @ Depth	7.000 in @ 7814 ft		
Casing Schlumberger	7802 ft		
Bit Size	6.125 in		
Type Fluid In Hole	WBM		
Density	10.2 lbm/gal	41 s	
Fluid Loss	PH		
Source Of Sample	Mud Pit		
RM @ Measured Temperature	1.450 ohm.m	@	65 degF
RMF @ Measured Temperature	1.087 ohm.m	@	65 degF
RMC @ Measured Temperature	2.175 ohm.m	@	65 degF
Source RMF	Calculated	Calculated	
RM @ MRT	0.491 @ 205	0.369 @ 205	
Maximum Recorded Temperatures	205 degF		
Circulation Stopped	30-Jan-2012	Time	0:00
Logger On Bottom	1-Feb-2012	Time	9:00
Unit Number	3021	Ft. Morgan	
Recorded By	Todd Johnson		
Witnessed By	George Hine		

Logging Date	Run 1	Run 2	Run
Run Number			
Depth Driller			
Schlumberger Depth			
Bottom Log Interval			
Top Log Interval			
Casing Driller Size @ Depth			
Casing Schlumberger			
Bit Size			
Type Fluid In Hole			
Density			
Fluid Loss			
Source Of Sample			
RM @ Measured Temperature	@		
RMF @ Measured Temperature	@		
RMC @ Measured Temperature	@		
Source RMF			
RM @ MRT	@	@	
Maximum Recorded Temperatures			
Circulation Stopped			
Logger On Bottom			
Unit Number			
Recorded By			
Witnessed By			

DISCLAIMER
 THE USE OF AND RELIANCE UPON THIS RECORDED-DATA BY THE HEREIN NAMED COMPANY (AND ANY OF ITS AFFILIATES, PARTNERS, REPRESENTATIVES, AGENTS, CONSULTANTS AND EMPLOYEES) IS SUBJECT TO THE TERMS AND CONDITIONS AGREED UPON BETWEEN SCHLUMBERGER AND THE COMPANY, INCLUDING: (a) RESTRICTIONS ON USE OF THE RECORDED-DATA; (b) DISCLAIMERS AND WAIVERS OF WARRANTIES AND REPRESENTATIONS REGARDING COMPANY'S USE OF AND RELIANCE UPON THE RECORDED-DATA; AND (c) CUSTOMER'S FULL AND SOLE RESPONSIBILITY FOR ANY INFERENCE DRAWN OR DECISION MADE IN CONNECTION WITH THE USE OF THIS RECORDED-DATA.

OTHER SERVICES1

OS1: FMI-PPC
 OS2: PEX-AIT
 OS3:
 OS4:
 OS5:

OTHER SERVICES2

OS1:
 OS2:
 OS3:
 OS4:
 OS5:

REMARKS: RUN NUMBER 1

Tool String ran as per tool sketch.
 Second run due to brigding out at 8400 on the first run
 Mud resistivity calculated from mud pit.
 Correlated to Baker Hughes MWD log
 Logged at 1700 ft/hr for the FMI image
 Maximum temperature from Gtem generalized borehole temperature

REMARKS: RUN NUMBER 2

Depth offset= 8 feet versus MWD Log

Rig: Xtreme 8
 Crew: Tim Ludgate, Ian Derry, Kit Carlson

RUN 1

SERVICE ORDER #: BFCL-00181
 PROGRAM VERSION: 18C0-147
 FLUID LEVEL: 10 ft

LOGGED INTERVAL	START	STOP

RUN 2

SERVICE ORDER #:
 PROGRAM VERSION:
 FLUID LEVEL:

LOGGED INTERVAL	START	STOP

EQUIPMENT DESCRIPTION

RUN 1

RUN 2

SURFACE EQUIPMENT

GSR-U
 WITM (DTS)-A

DOWNHOLE EQUIPMENT

DWCH-C 63.4
 DWCH-C



Input DLIS Files

DEFAULT FMI_CAL_NGS_007LUP FN:6 PRODUCER 01-Feb-2012 08:58 11992.5 FT 7649.5 FT

Output DLIS Files

DEFAULT FMI_CAL_NGS_009PUP FN:8 PRODUCER 01-Feb-2012 13:06 12000.0 FT 7657.5 FT

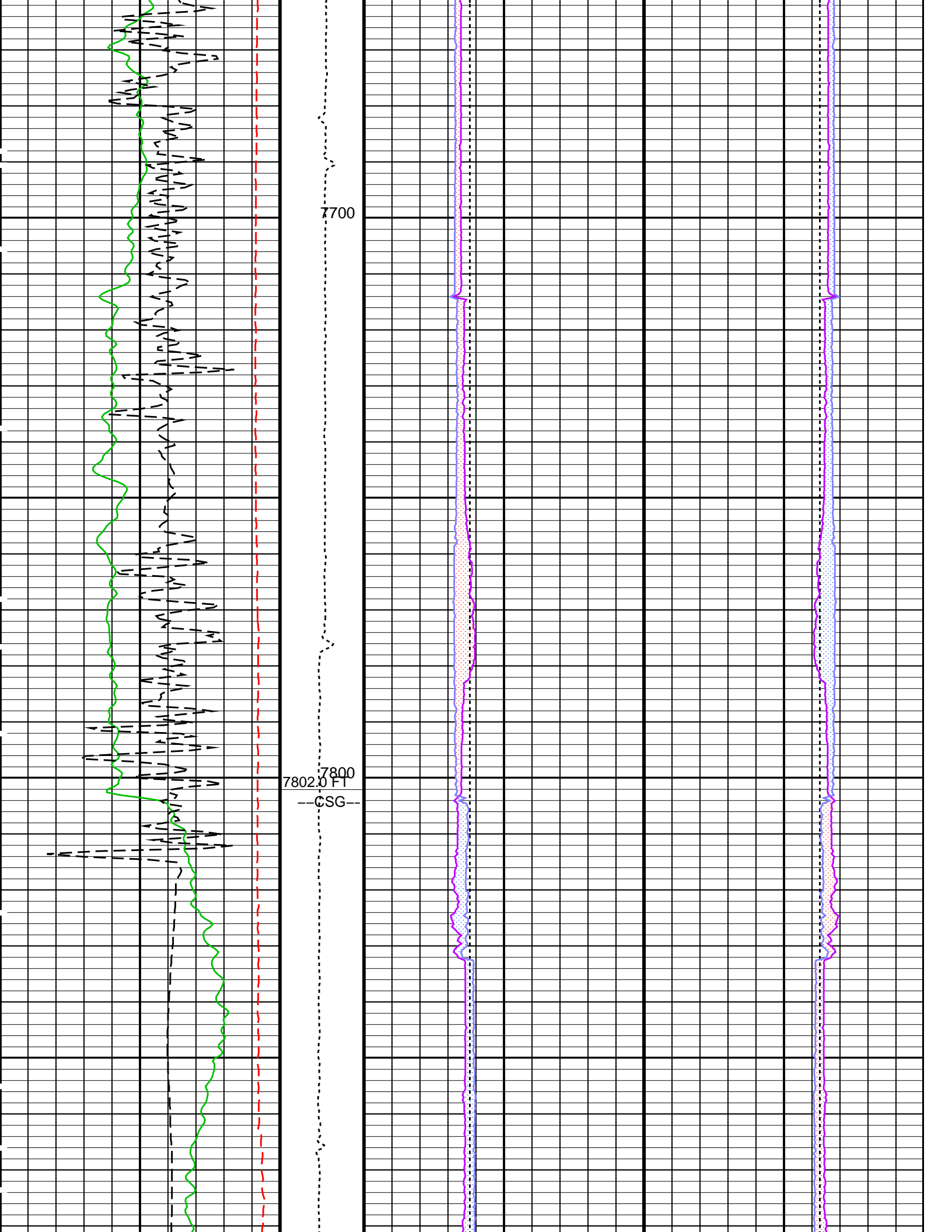
OP System Version: 18C0-147

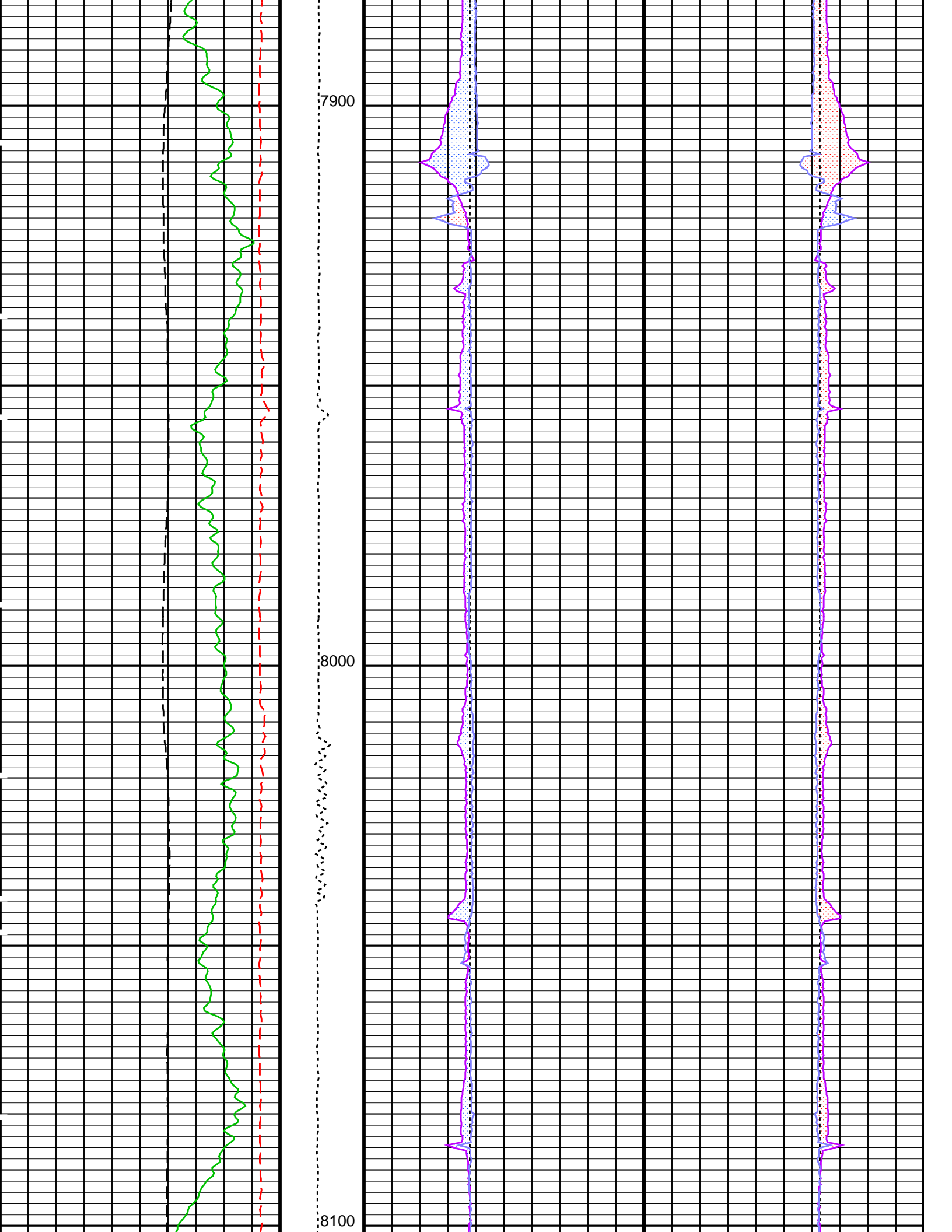
FBST-B	18C0-147	PPC1-B	18C0-147
HNGC-B	HFE-4001-OP18-NUCL	HNGS-BA	HFE-4001-OP18-NUCL
DTC-H	18C0-147		

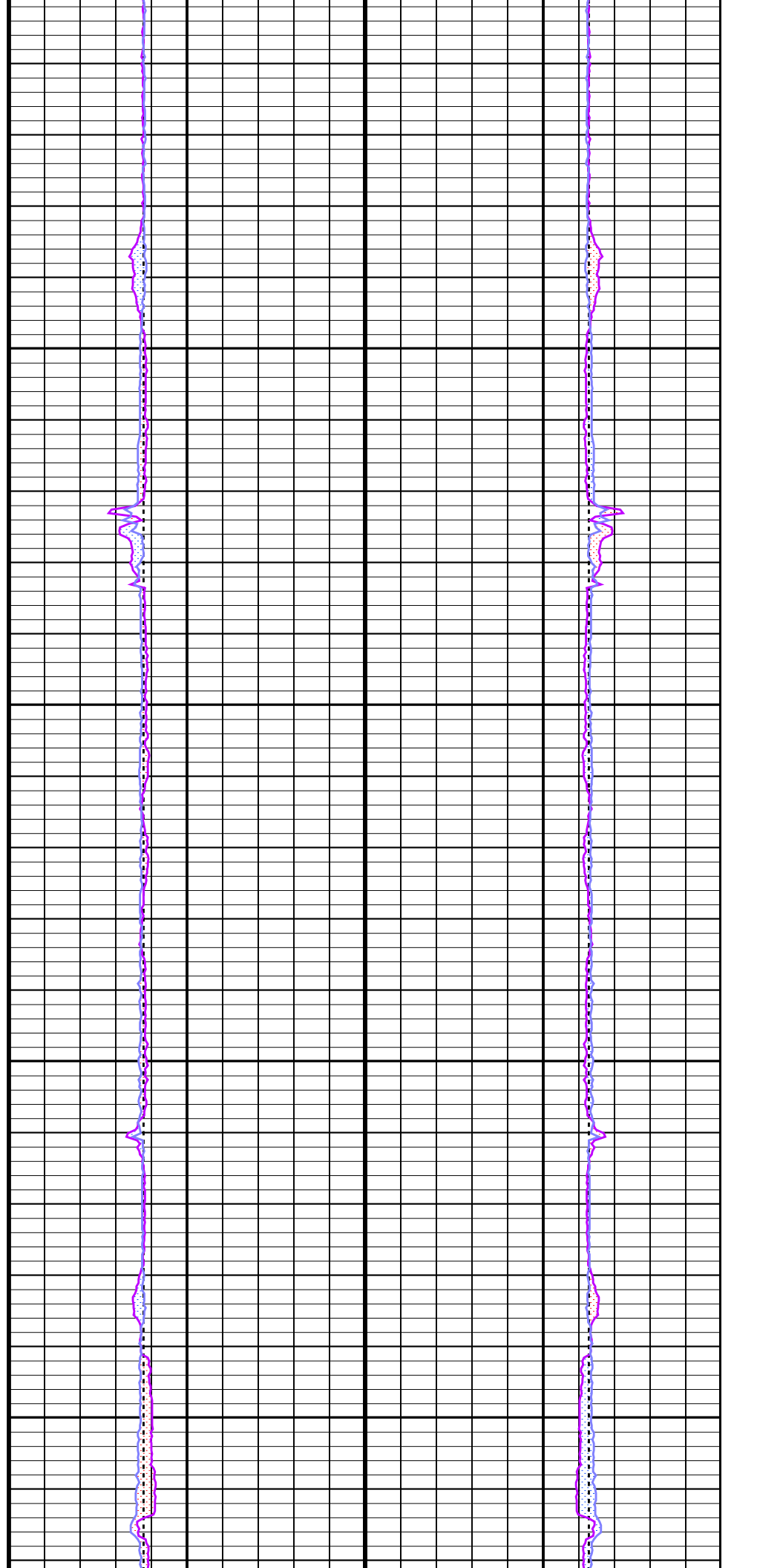
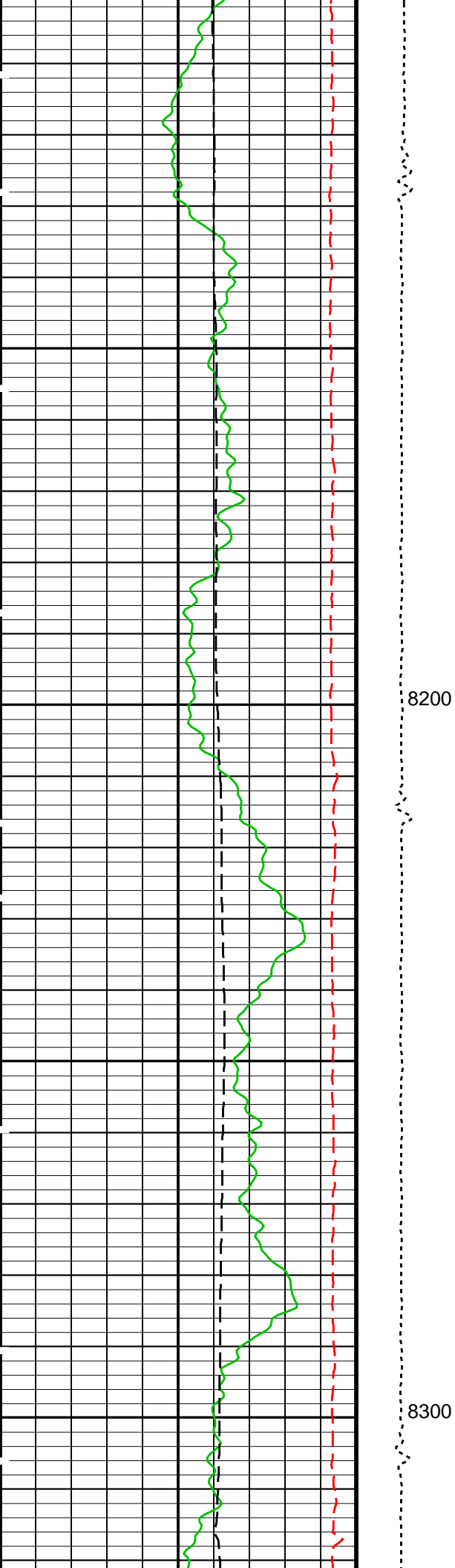
PIP SUMMARY

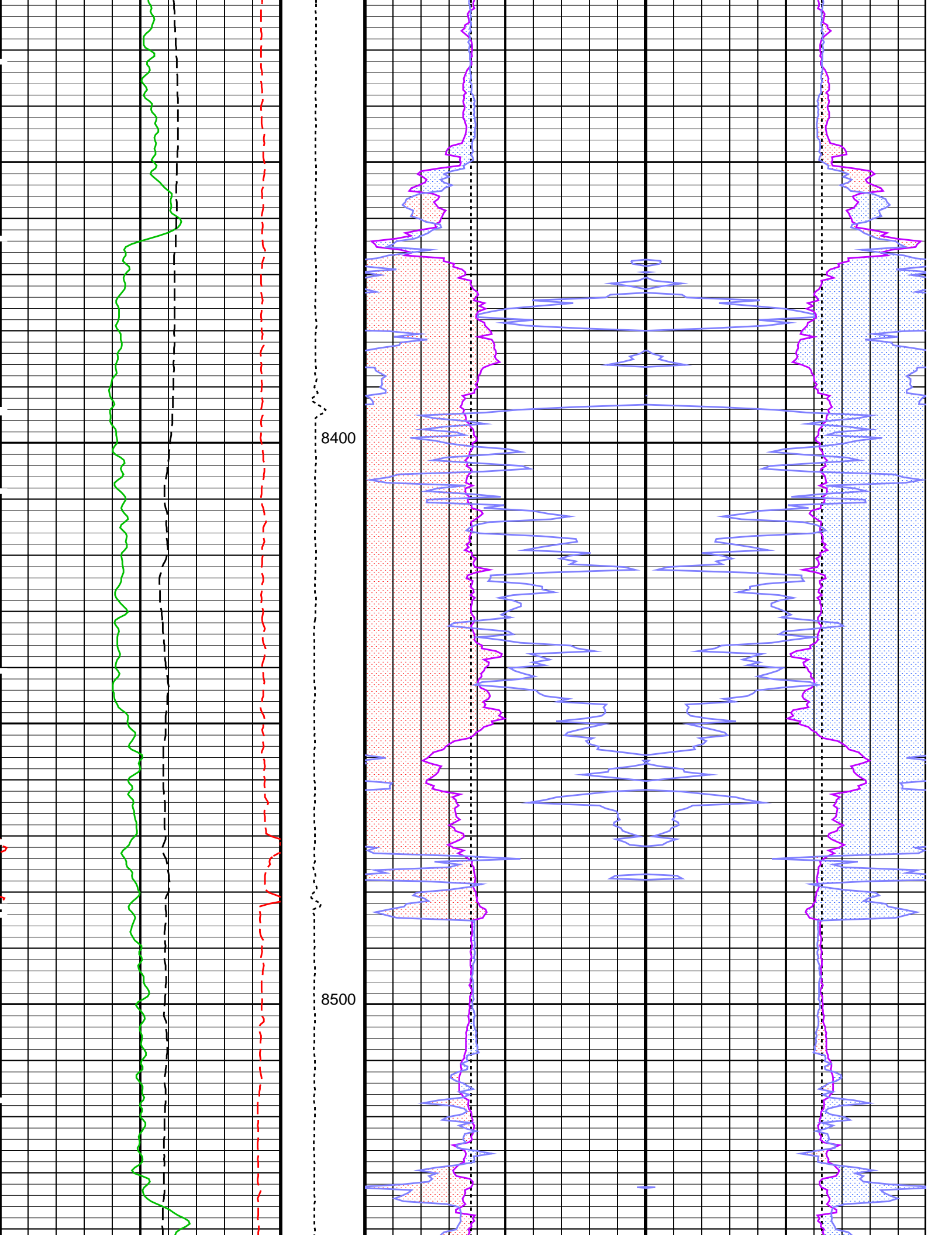
Time Mark Every 60 S

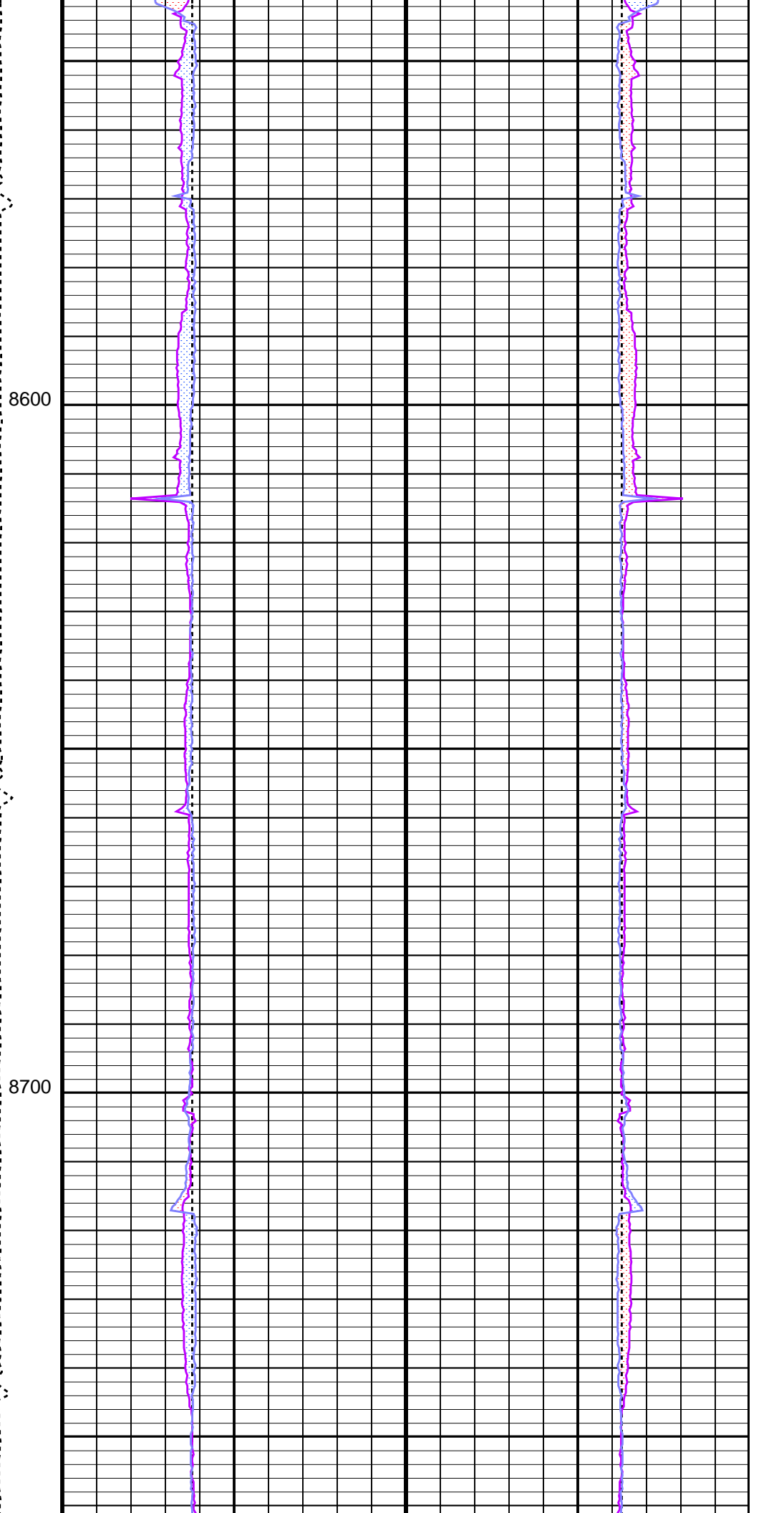
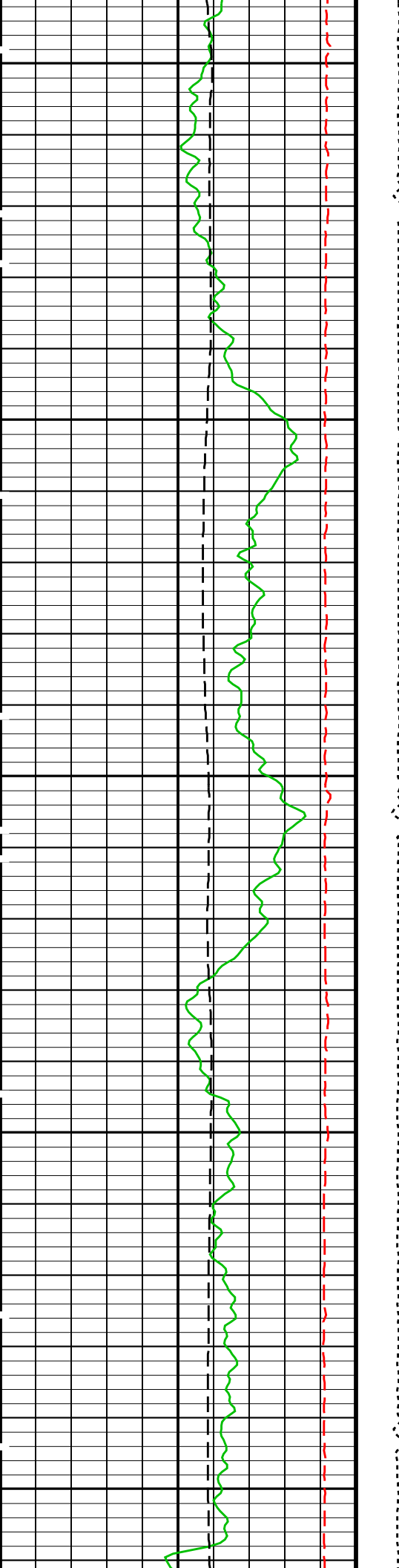
		PPC1 Ellipse Hole Diameter 2 (EHD2_PPC1)	OVALITY
		8 (IN) 3	From EHD2_PPC1_1 to EHD1_PPC1_1
		PPC1 Ellipse Hole Diameter 1 (EHD1_PPC1)	OVALITY
		8 (IN) 3	From EHD1_PPC1_1 to EHD2_PPC1_1
Relative Bearing (RB_FBST) (DEG)		OVALITY	PPC1 Ellipse Hole Diameter 2 (EHD2_PPC1)
-40 360		From EHD2_PPC1 to EHD1_PPC1	3 (IN) 8
Gamma Ray (HSGR) (GAPI)		OVALITY	PPC1 Ellipse Hole Diameter 1 (EHD1_PPC1)
0 150		From EHD1_PPC1 to EHD2_PPC1	3 (IN) 8
Calibrated Downhole Force (CDF) (LBF)		Bit Size (BS)	Bit Size (BS)
1000 11000		8 (IN) 3	3 (IN) 8
Tension (TENS) (LBF)			
5000 0			

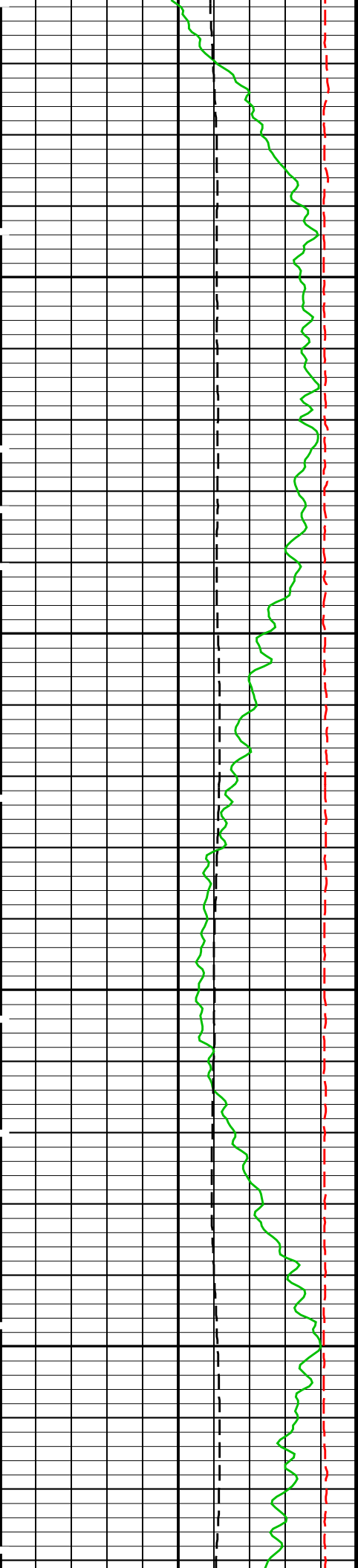






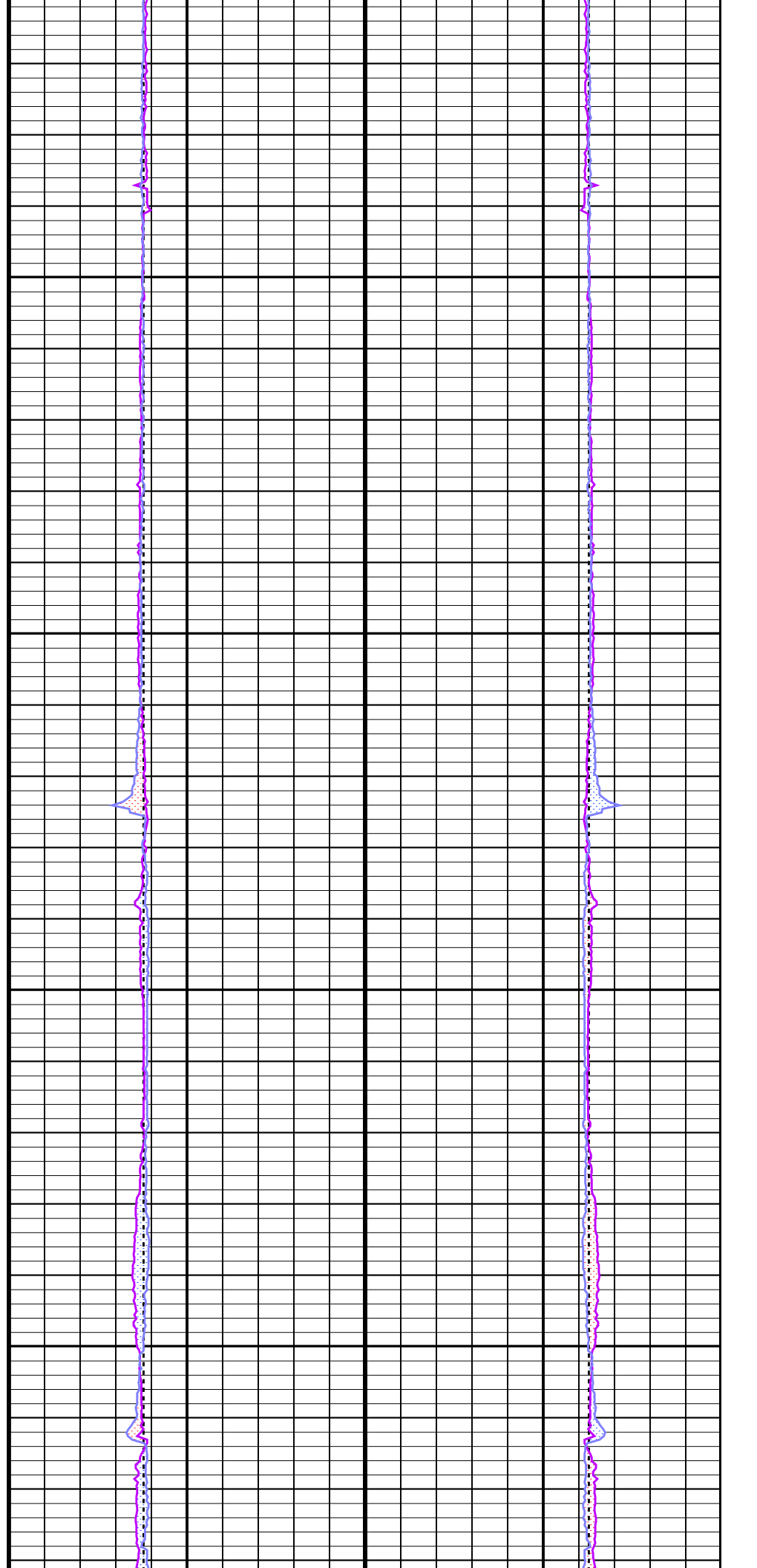


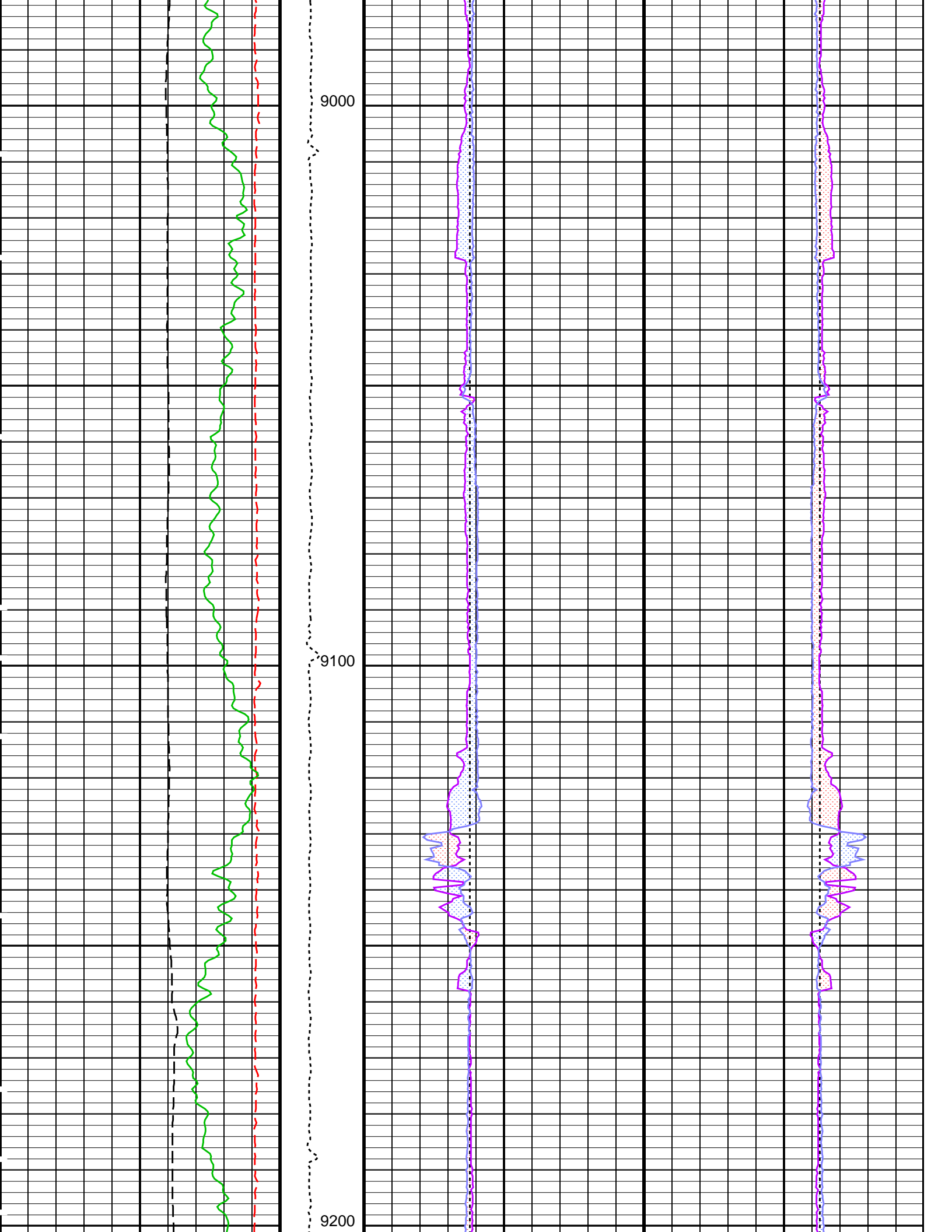


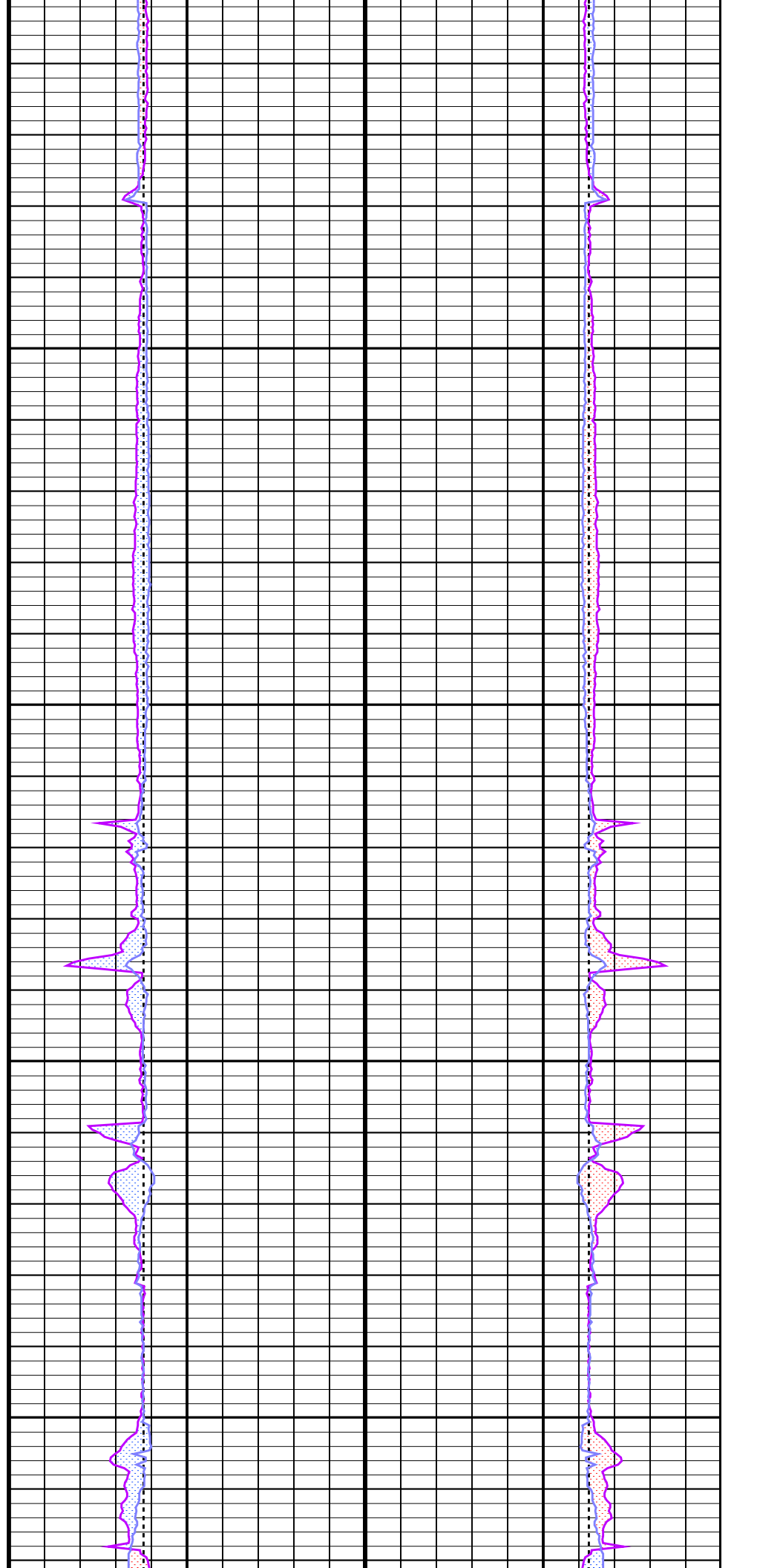
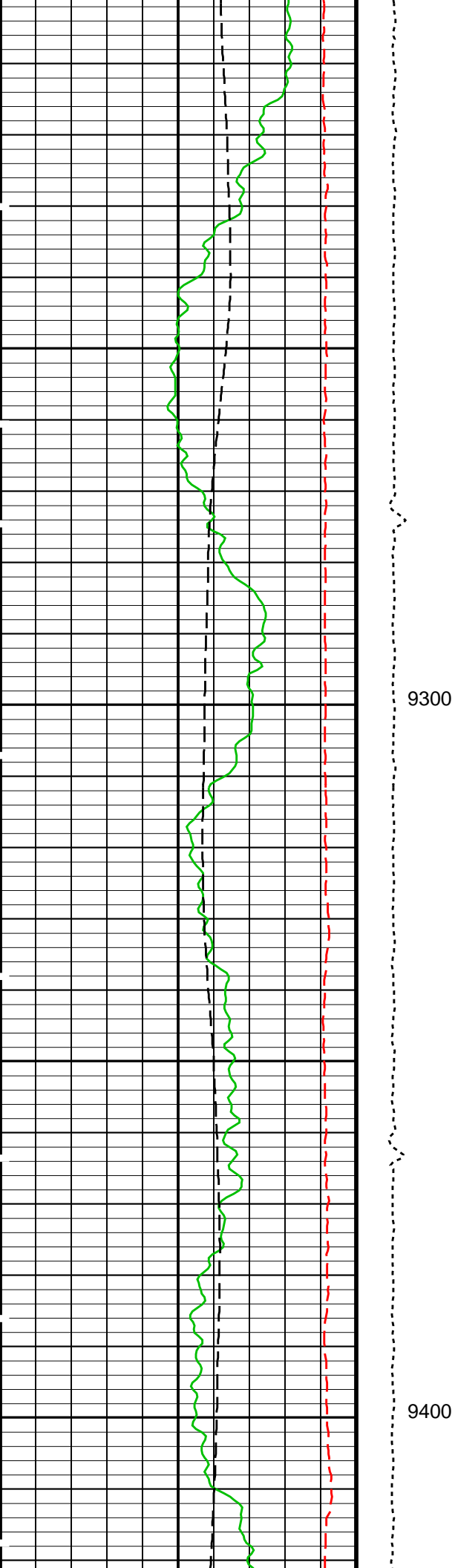


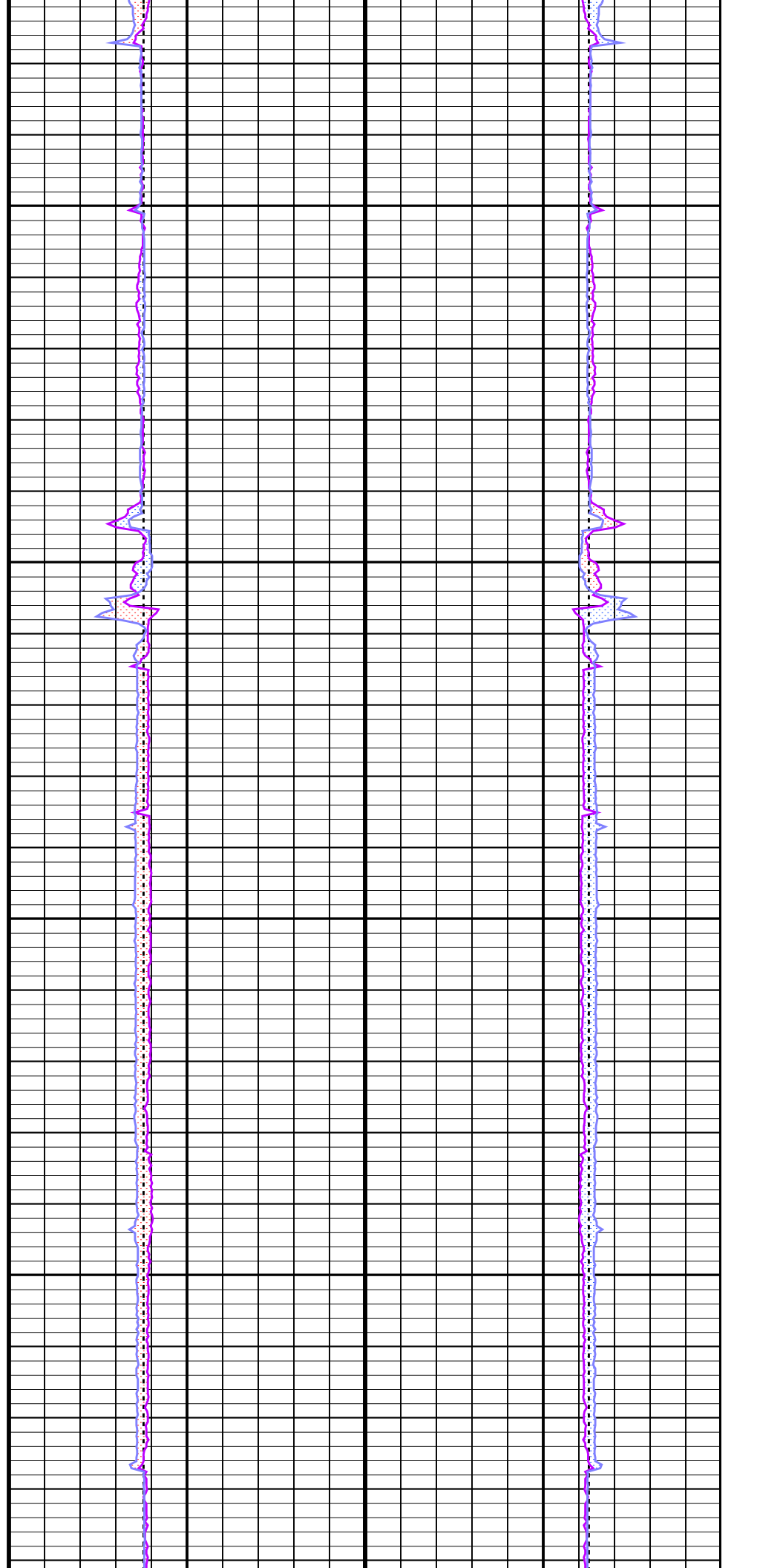
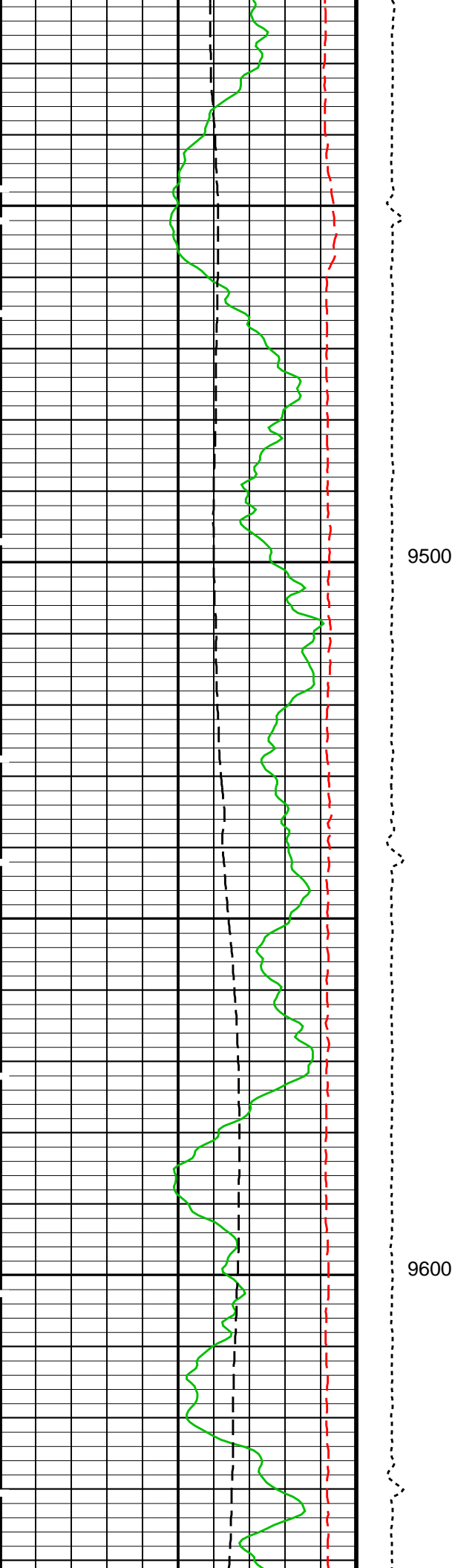
8800

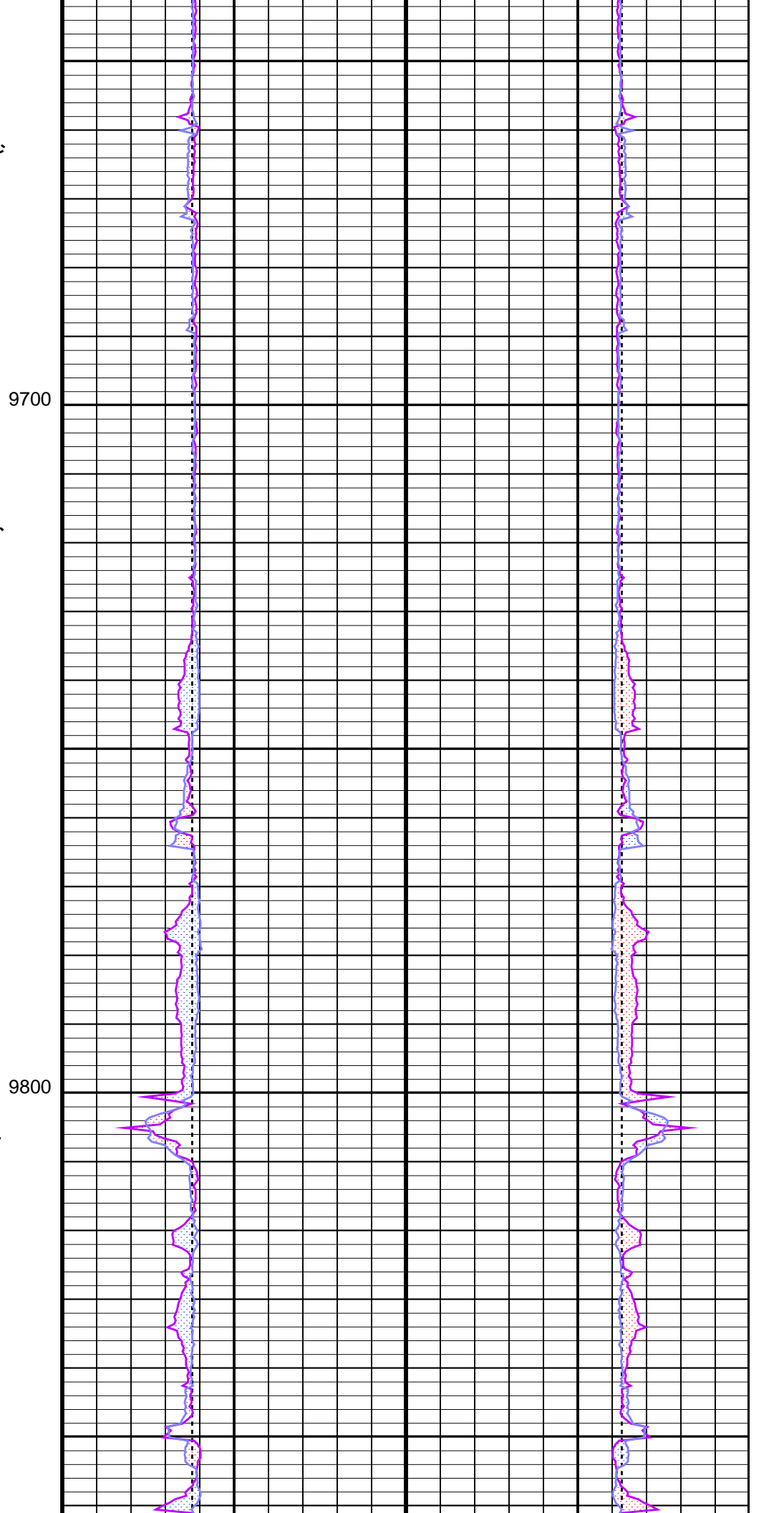
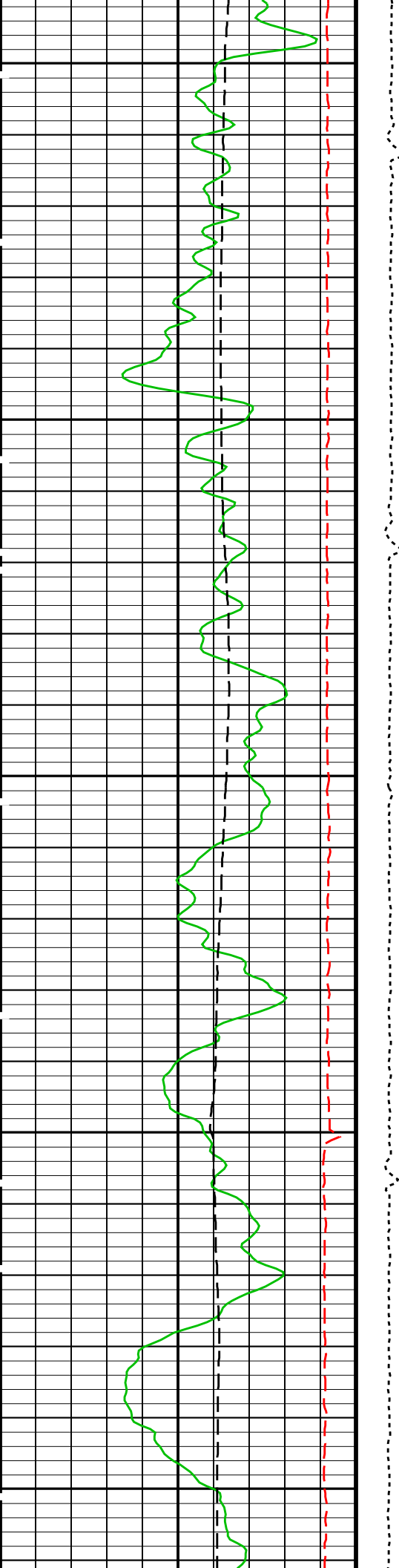
8900

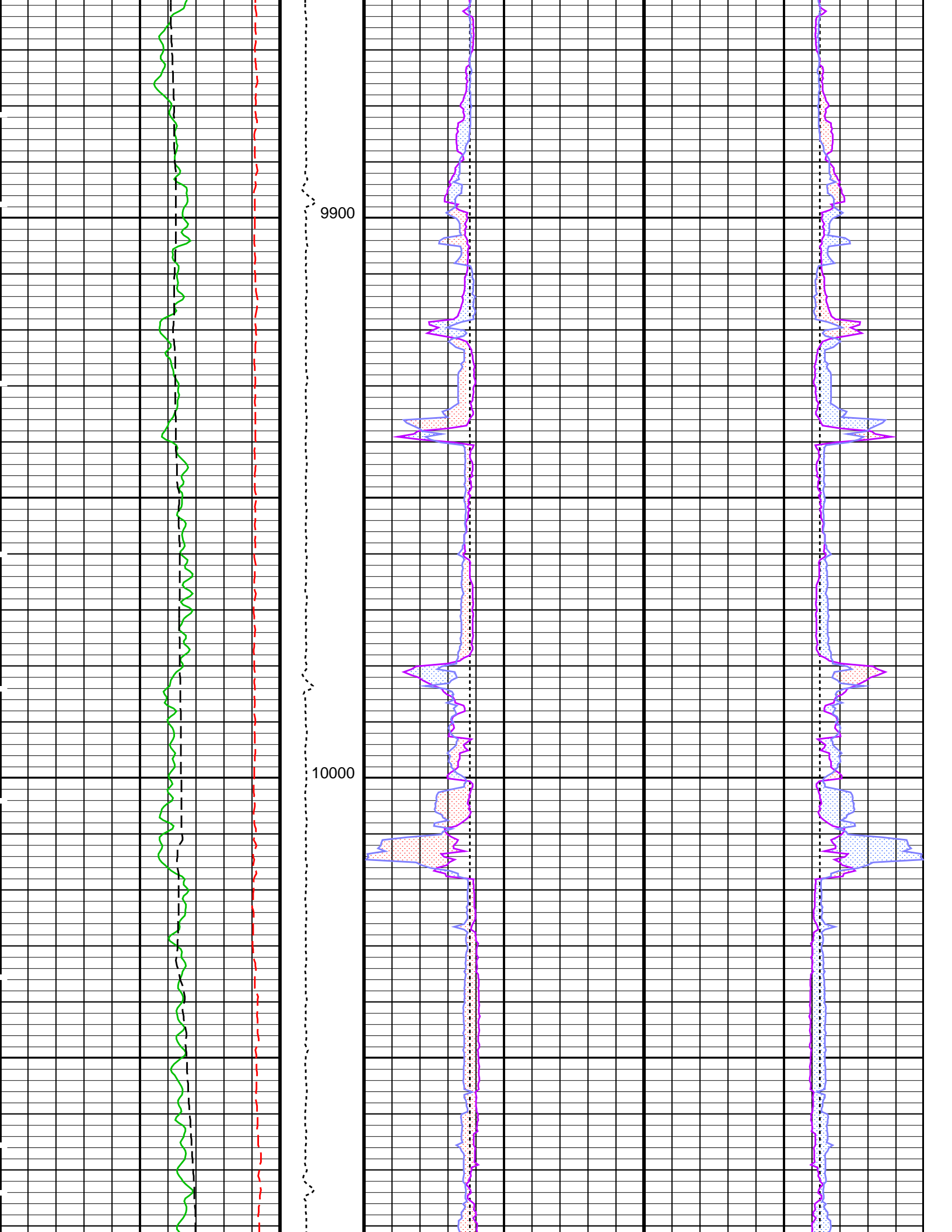


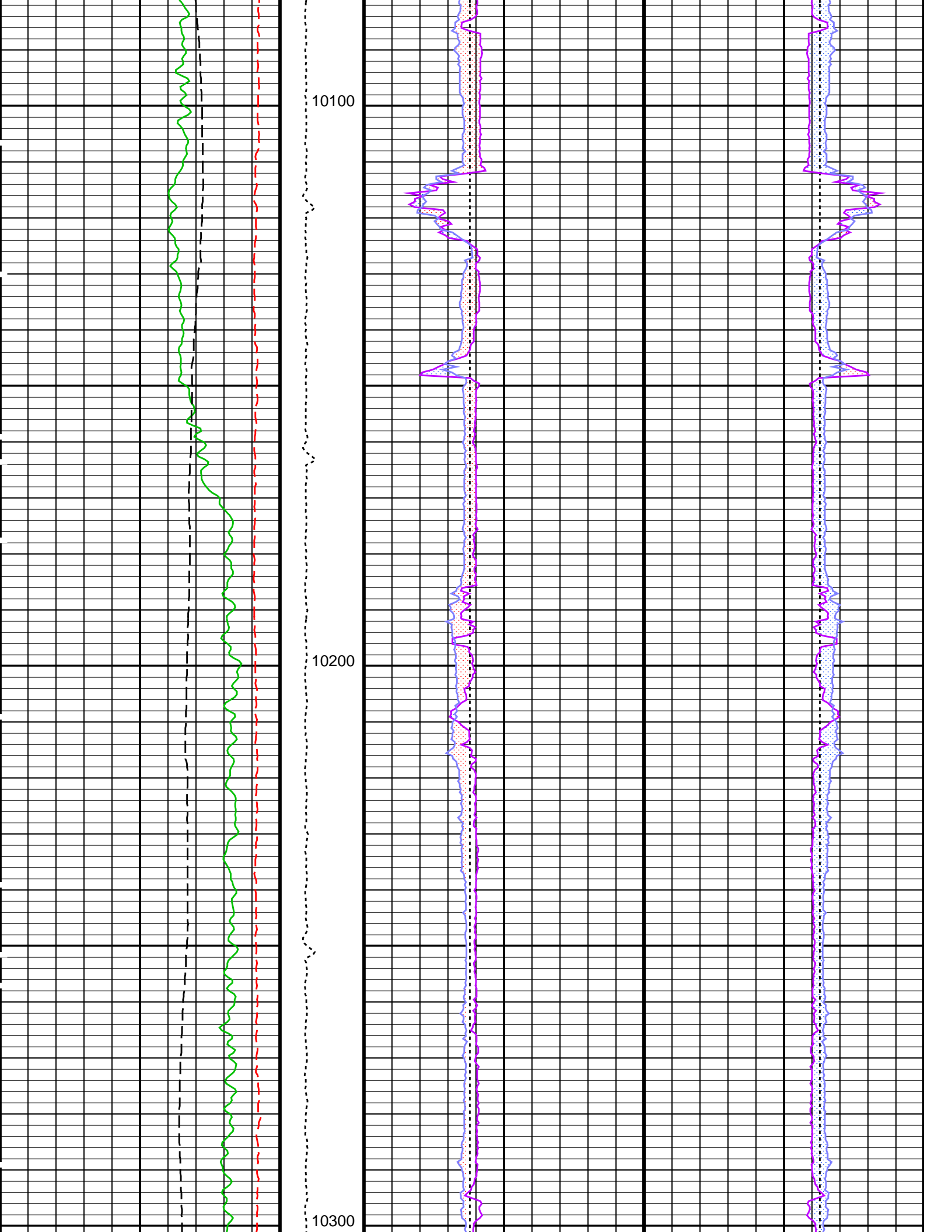


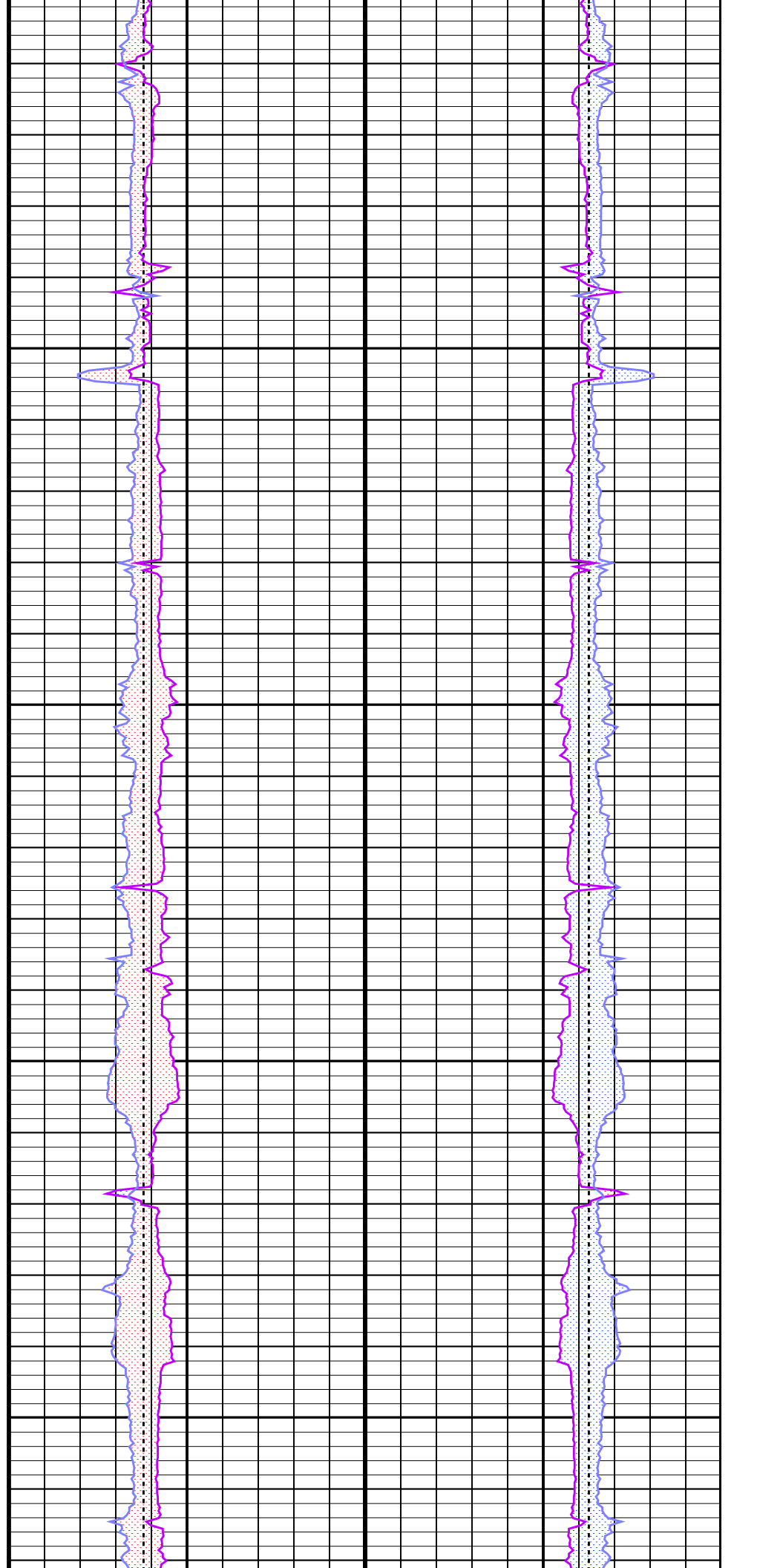
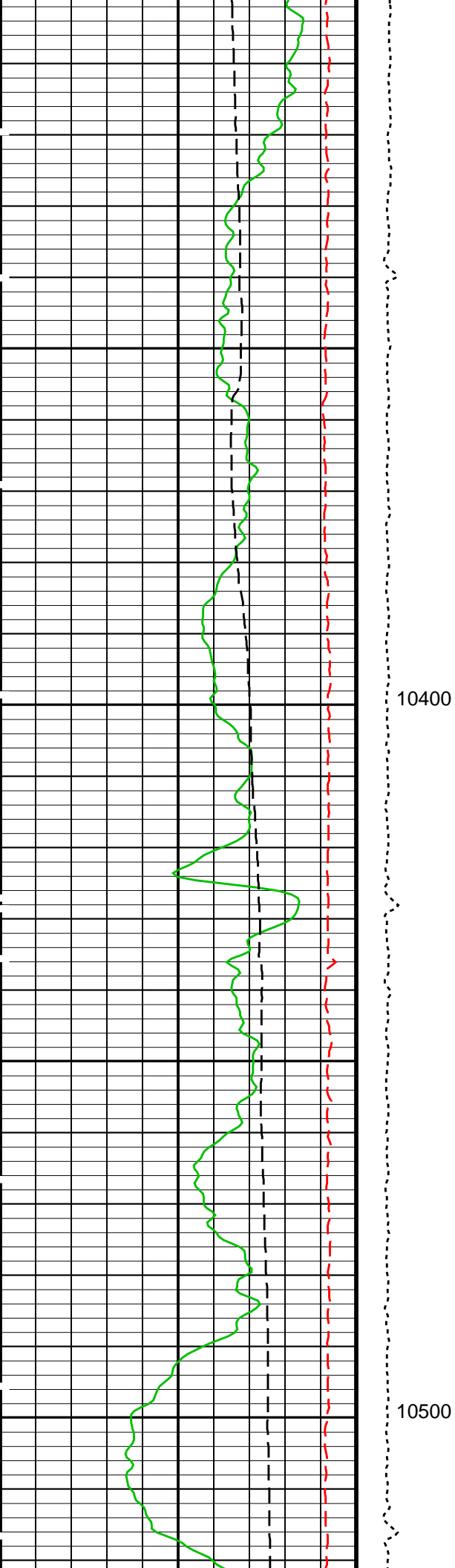


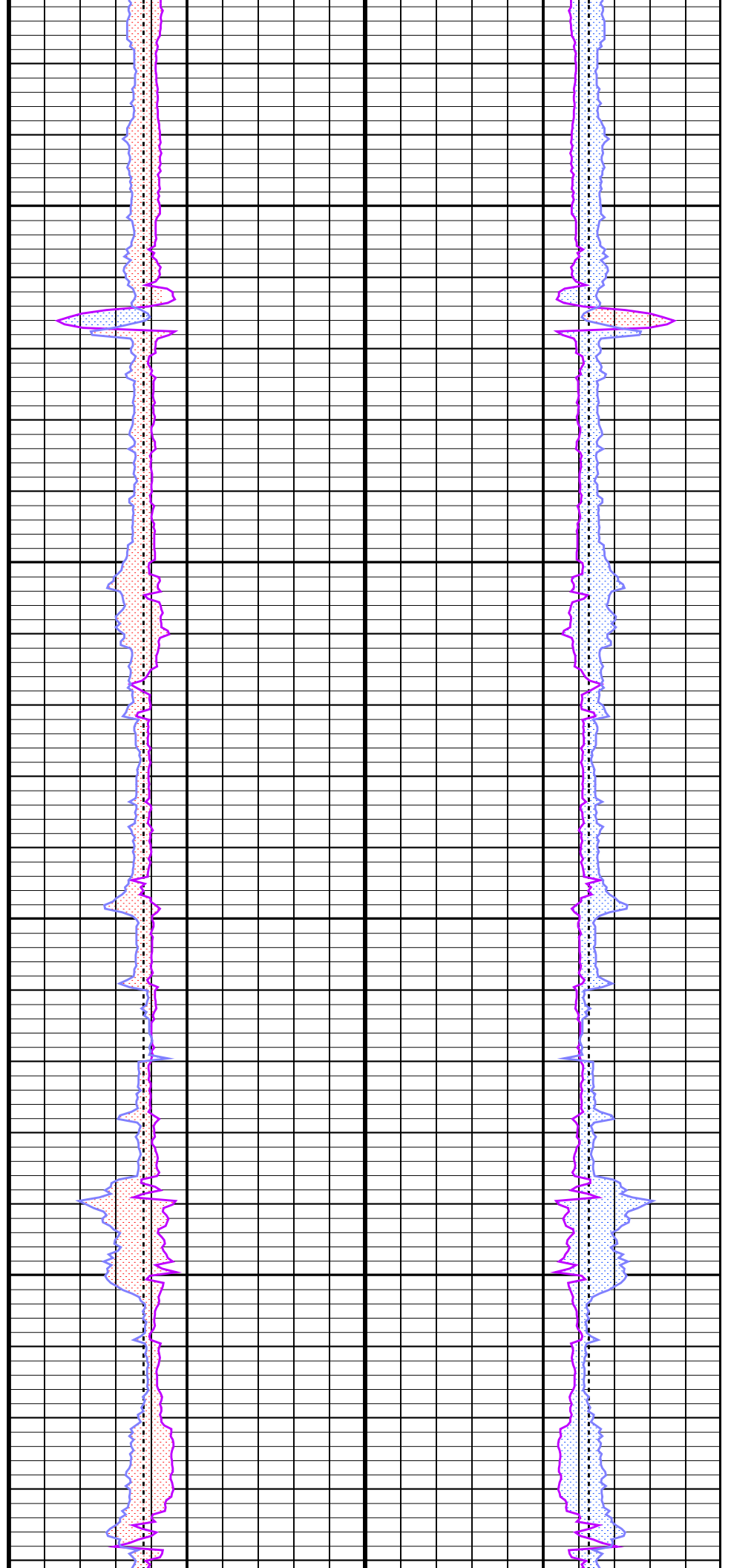
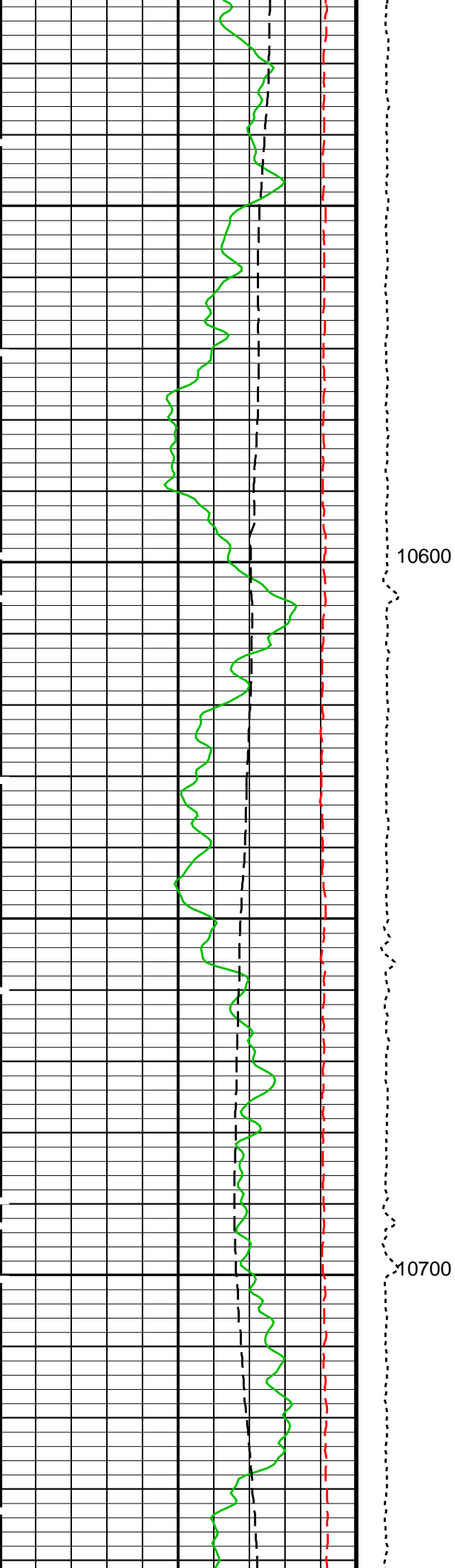


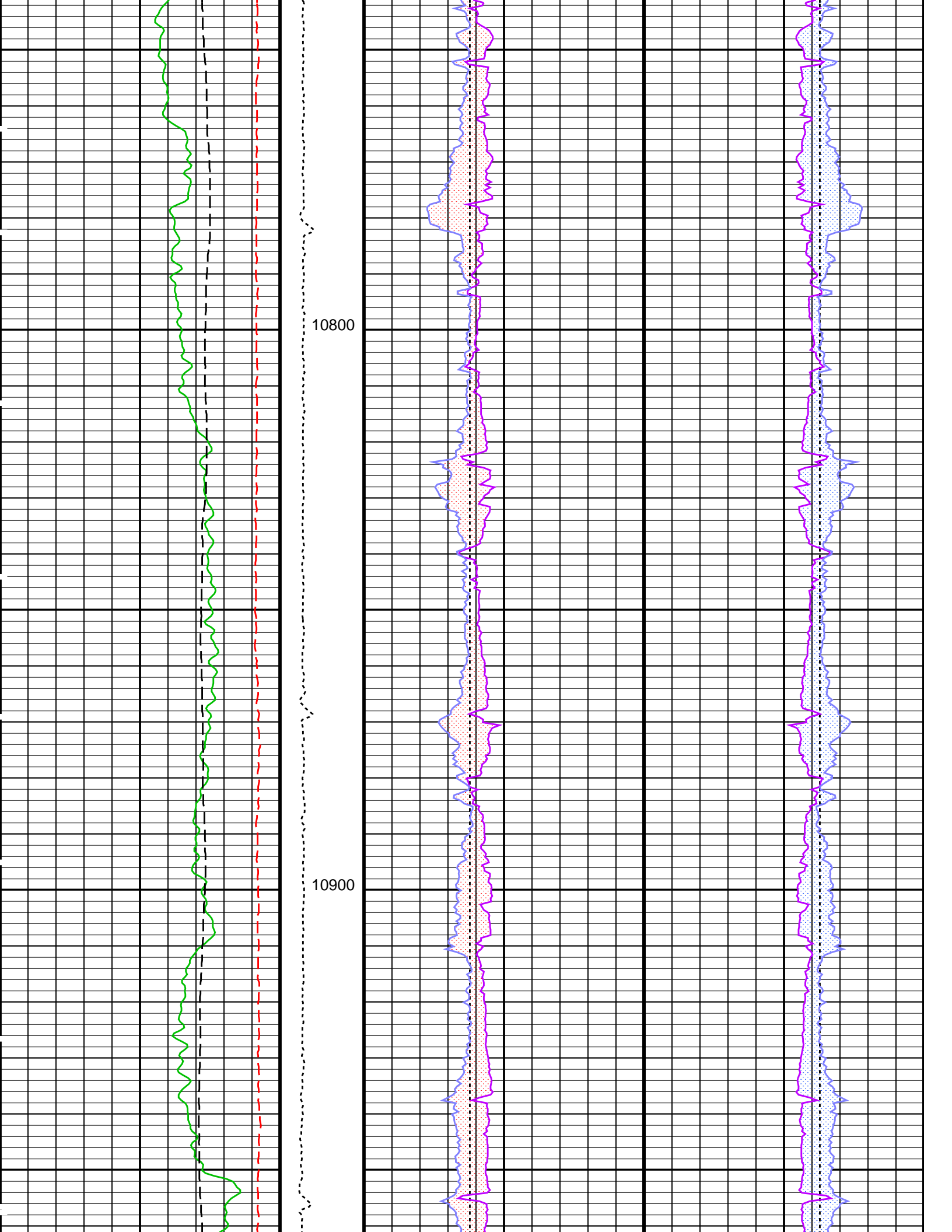


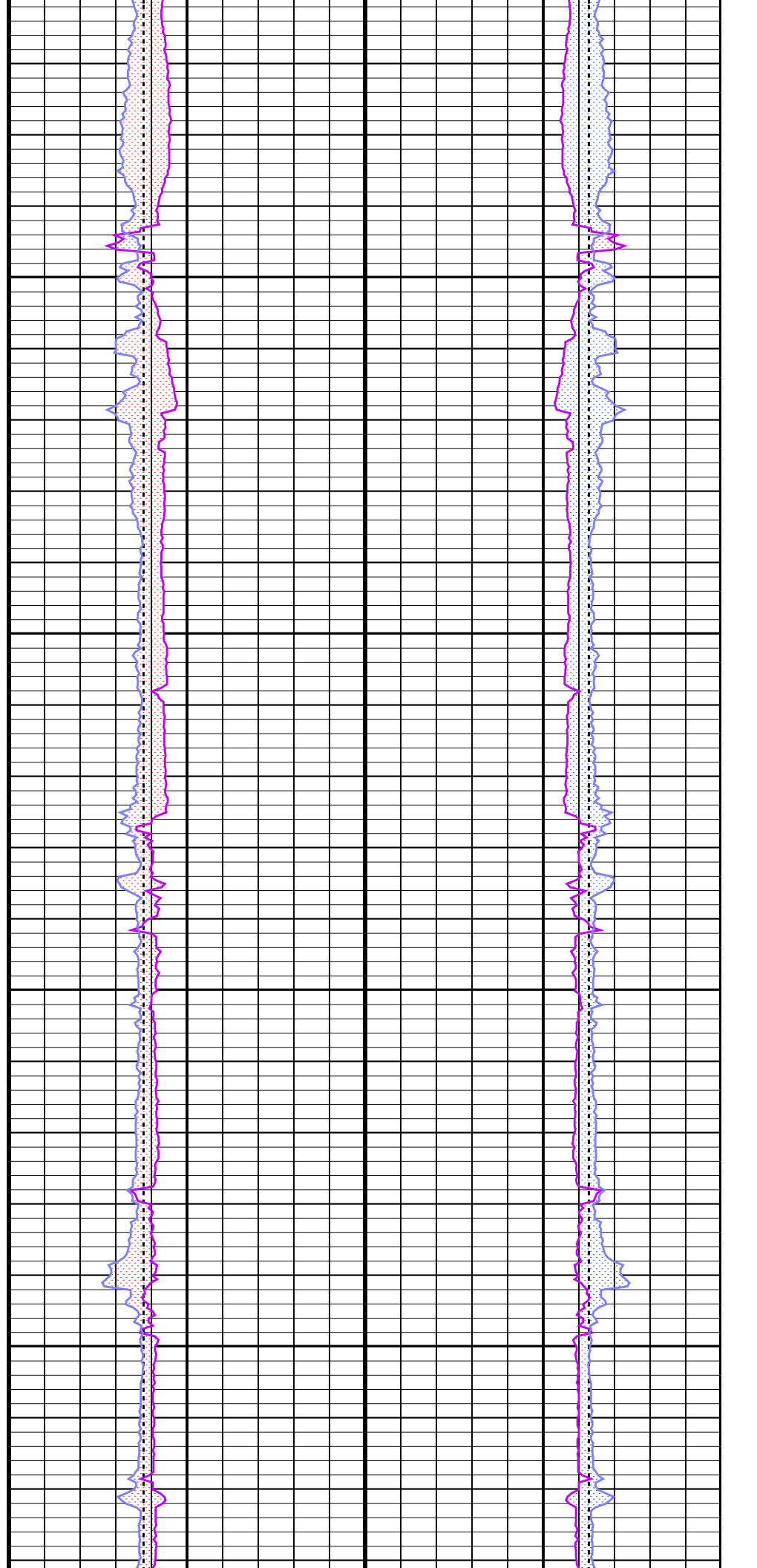
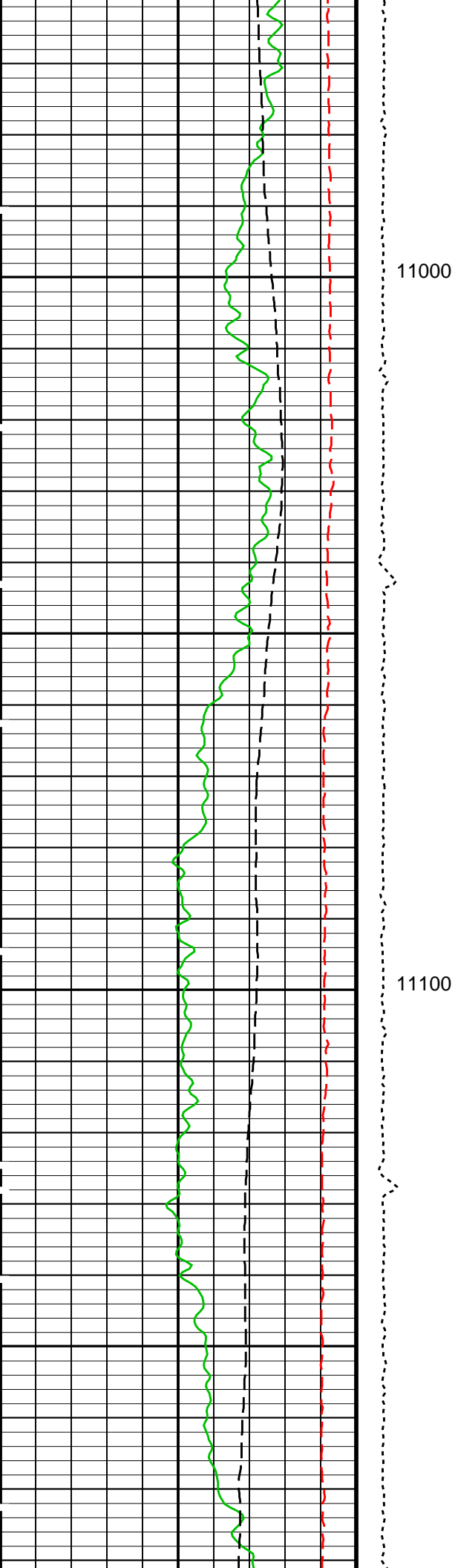


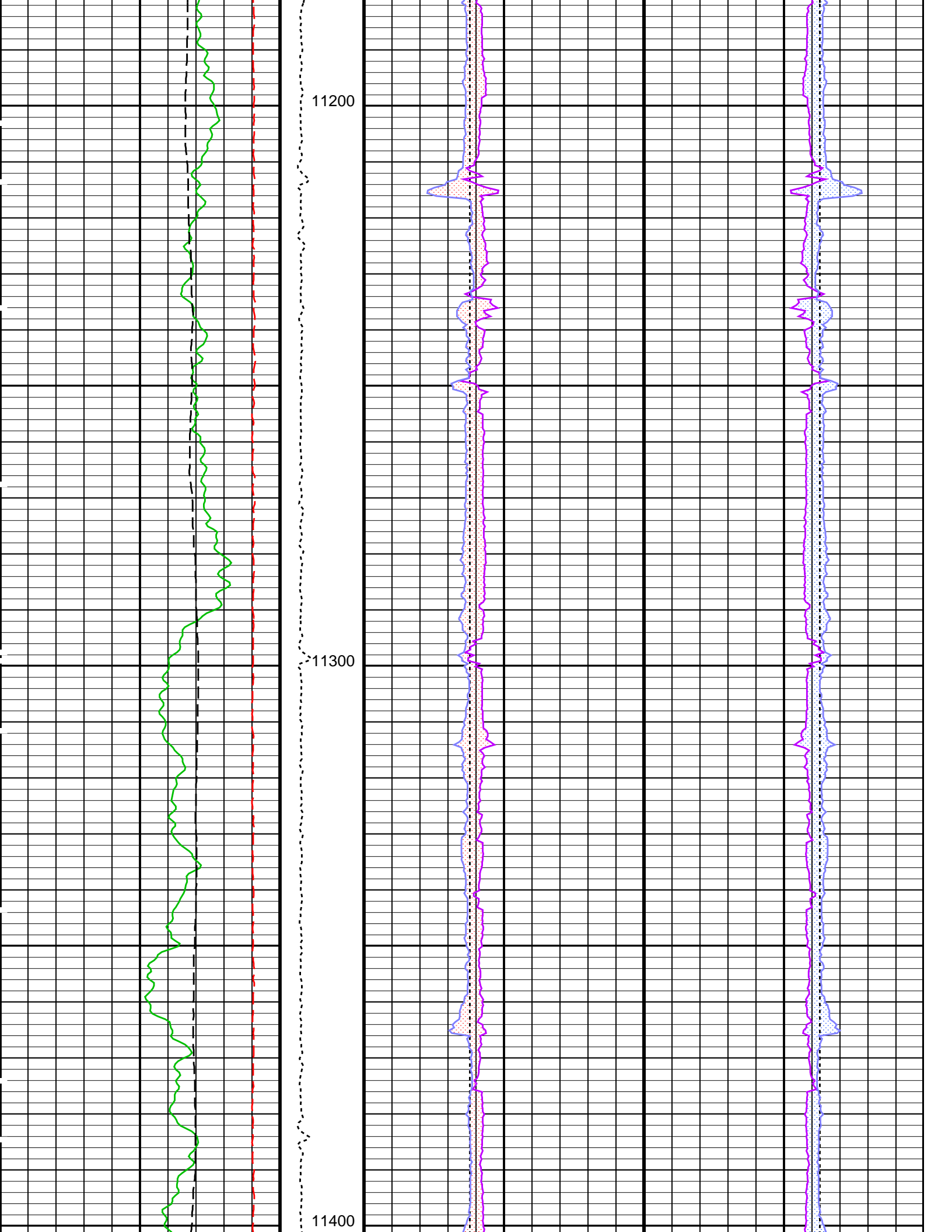


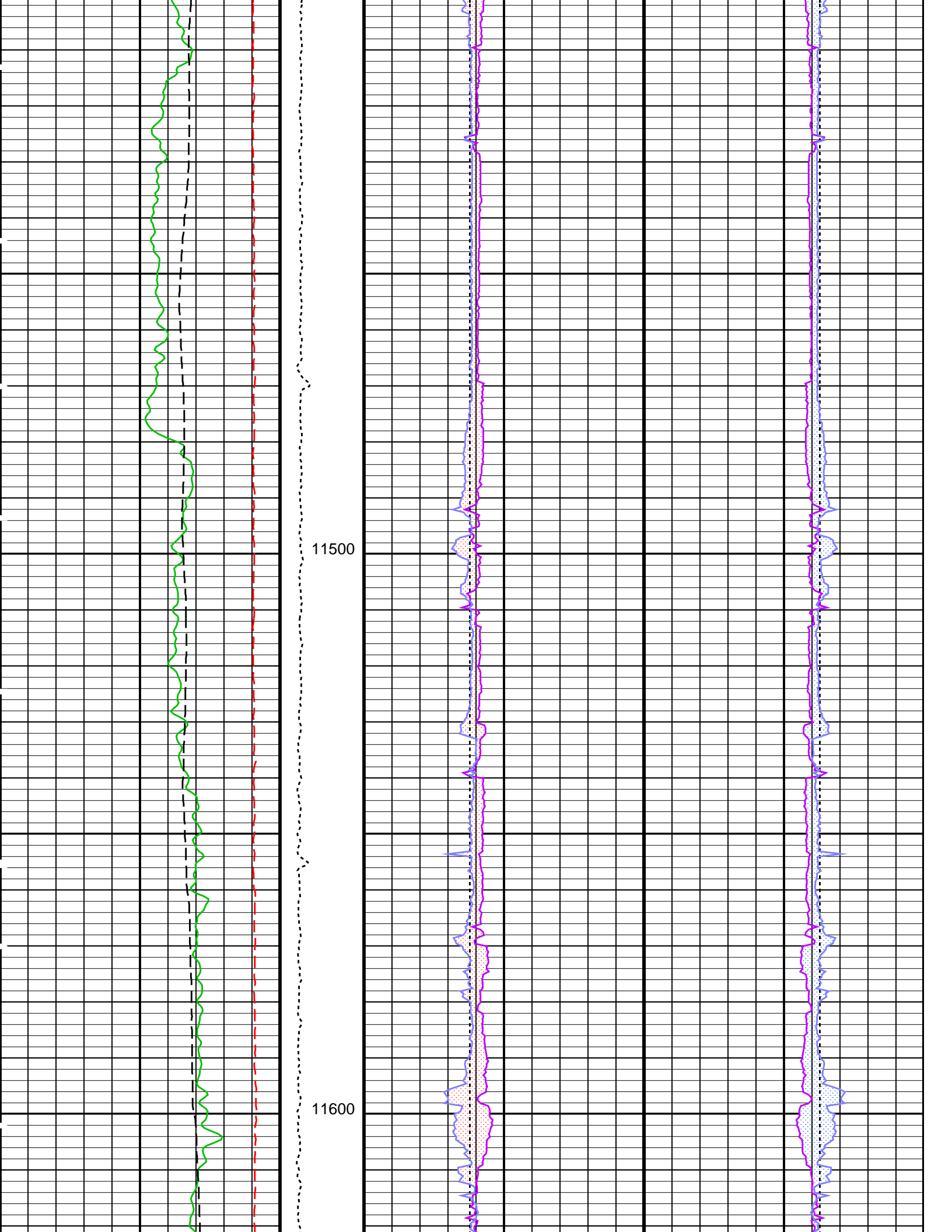


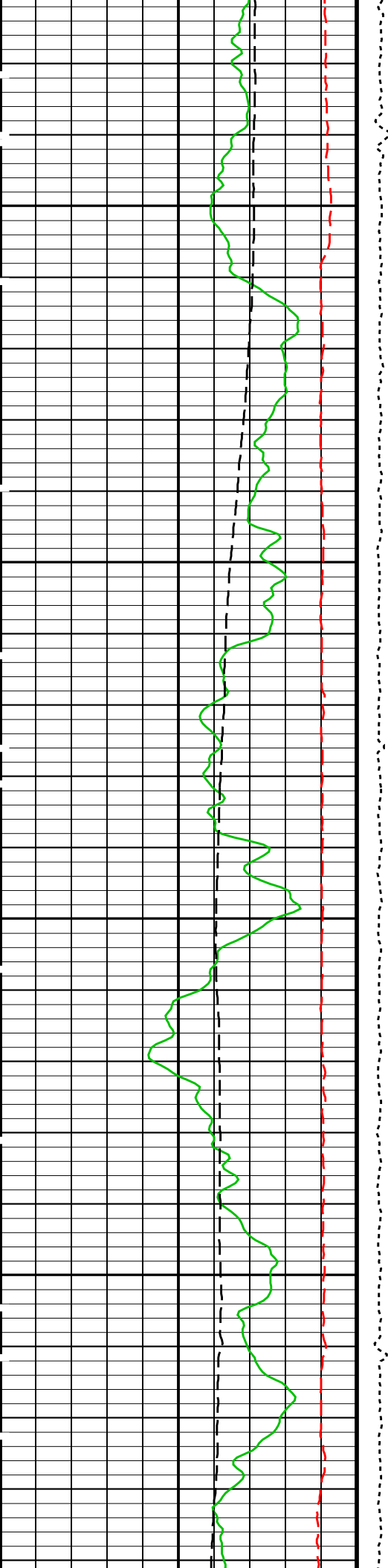






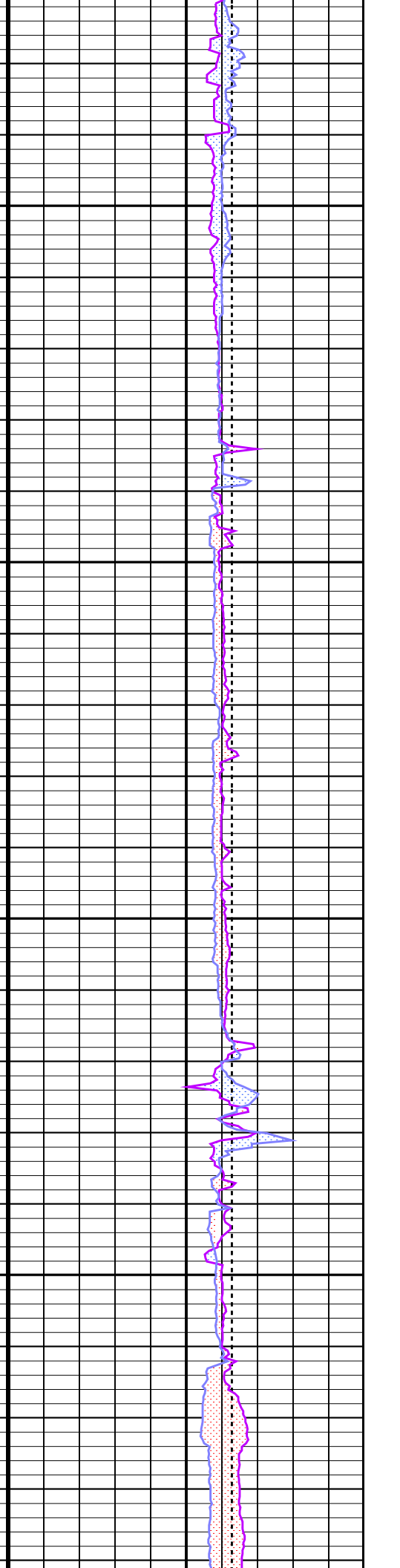
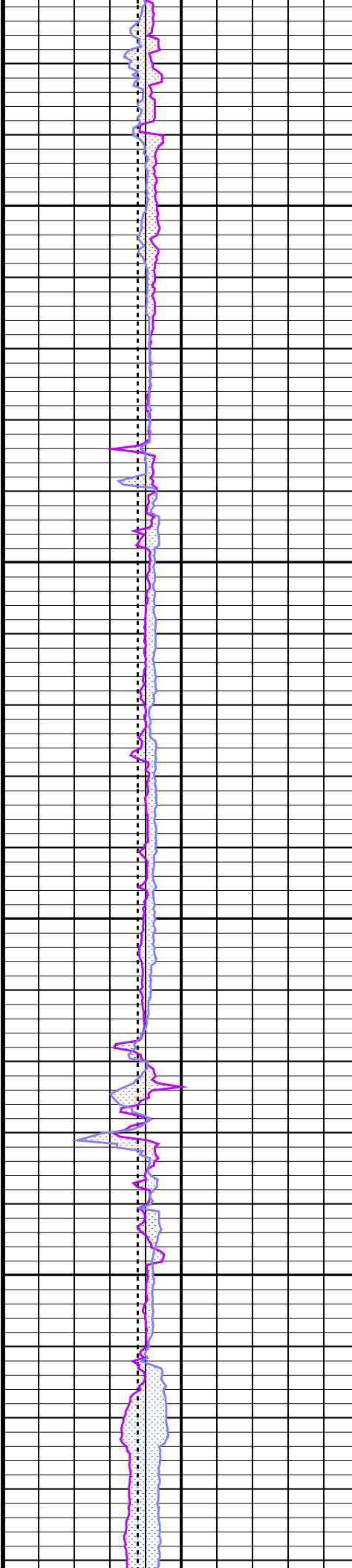


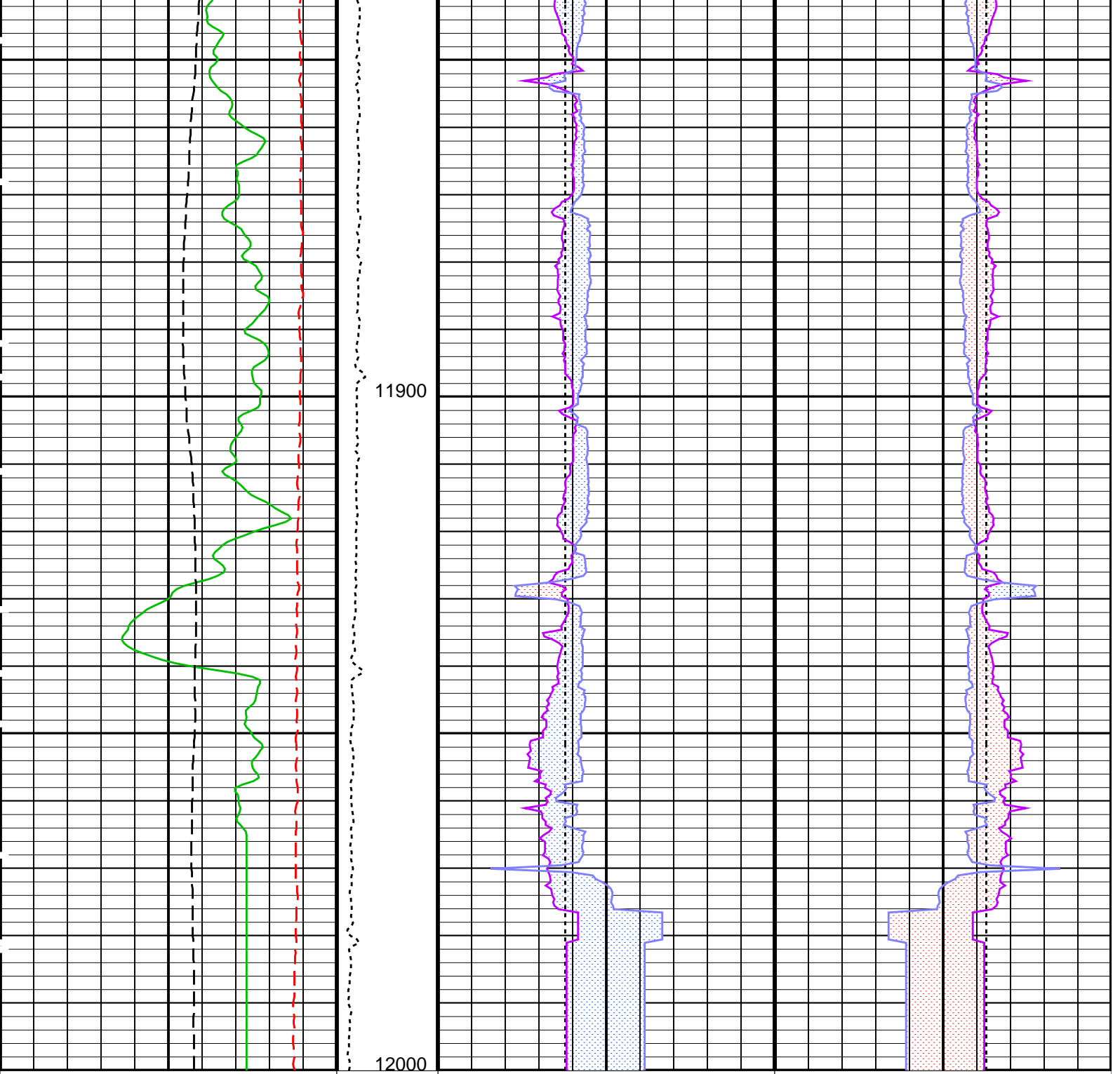




11700

11800





<p>Calibrated Downhole Force (CDF) (LBF)</p> <p>1000 11000</p>	<p>Tension (TENS) (LBF)</p> <p>5000 0</p>	<p>Bit Size (BS) (IN)</p> <p>8 3</p>	<p>Bit Size (BS) (IN)</p> <p>3 8</p>
<p>Gamma Ray (HSGR) (GAPI)</p> <p>0 150</p>	<p>OVALITY From EHD1_PPC1 to EHD2_PPC1</p>		<p>PPC1 Ellipse Hole Diameter 1 (EHD1_PPC1) (IN)</p> <p>3 8</p>
<p>Relative Bearing (RB_FBST) (DEG)</p> <p>-40 360</p>	<p>OVALITY From EHD2_PPC1 to EHD1_PPC1</p>		<p>PPC1 Ellipse Hole Diameter 2 (EHD2_PPC1) (IN)</p> <p>3 8</p>
<p>PPC1 Ellipse Hole Diameter 1 (EHD1_PPC1) (IN)</p> <p>8 3</p>		<p>OVALITY From EHD1_PPC1_1 to EHD2_PPC1_1</p>	
<p>PPC1 Ellipse Hole Diameter 2 (EHD2_PPC1) (IN)</p> <p>8 3</p>		<p>OVALITY From EHD2_PPC1_1 to EHD1_PPC1_1</p>	

Parameters

DLIS Name	Description	Value
	PPC1-B: Powered Positioning Device/Caliper 1	
CLBD_PPC	PPC1 Caliper Type	CAL_STD
	PPC Calibration data selection	ROM
	HNGS-BA: Hostile Natural Gamma Ray Sonde	
BAR1	HNGS Detector 1 Barite Constant	1
BAR2	HNGS Detector 2 Barite Constant	1
BHK	HNGS Borehole Potassium Correction Concentration	0
BHS	Borehole Status	OPEN
CSD1	Inner Casing Outer Diameter	0 IN
CSD2	Outer Casing Outer Diameter	0 IN
CSW1	Inner Casing Weight	0 LB/F
CSW2	Outer Casing Weight	0 LB/F
DBCC	HNGS Barite Constant Correction Flag	NONE
GCSE	Generalized Caliper Selection	BS
H1P	HNGS Detector 1 Allow/Disallow In Processing	ALLOW
H2P	HNGS Detector 2 Allow/Disallow In Processing	ALLOW
HABK	HNGS Borehole Potassium Running Average	-0.011388
HALF	HNGS Alpha Filter Length	60 IN
HCRB	HNGS Apply Borehole Potassium Correction	NONE
HMWM	Mud Weighting Material	NATU
HNPE	HNGS Processing Enable	YES
S1BI	HNGS Detector 1 Calibration Bismuth Count Rate	-999.25 CPS
S2BI	HNGS Detector 2 Calibration Bismuth Count Rate	-999.25 CPS
SGRC	HNGS Standard Gamma-Ray Correction Flag	YES
TPOS	Tool Position	ECCE
VBA1	HNGS Detector 1 Variable Barite Factor Running Average	0.98141
VBA2	HNGS Detector 2 Variable Barite Factor Running Average	0.988575
	System and Miscellaneous	
BS	Bit Size	6.125 IN
DFD	Drilling Fluid Density	10.20 LB/G
DO	Depth Offset for Playback	8.0 FT
PP	Playback Processing	NORMAL

Format: PPC_Caliper_Herbs Vertical Scale: 5" per 100' Graphics File Created: 01-Feb-2012 13:06

OP System Version: 18C0-147

FBST-B	18C0-147	PPC1-B	18C0-147
HNGC-B	HFE-4001-OP18-NUCL	HNGS-BA	HFE-4001-OP18-NUCL
DTC-H	18C0-147		

Input DLIS Files

DEFAULT	FMI_CAL_NGS_007LUP	FN:6	PRODUCER	01-Feb-2012 08:58	11992.5 FT	7649.5 FT
---------	--------------------	------	----------	-------------------	------------	-----------

Output DLIS Files

DEFAULT	FMI_CAL_NGS_009PUP	FN:8	PRODUCER	01-Feb-2012 13:06
---------	--------------------	------	----------	-------------------

Company: **Kerr-McGee Oil & Gas Onshore LP**

Schlumberger

Well: **Cannon 36N-11HZ**

Field: **Wattenberg**

County: **Weld**

State: **Colorado**

PPC
Caliper