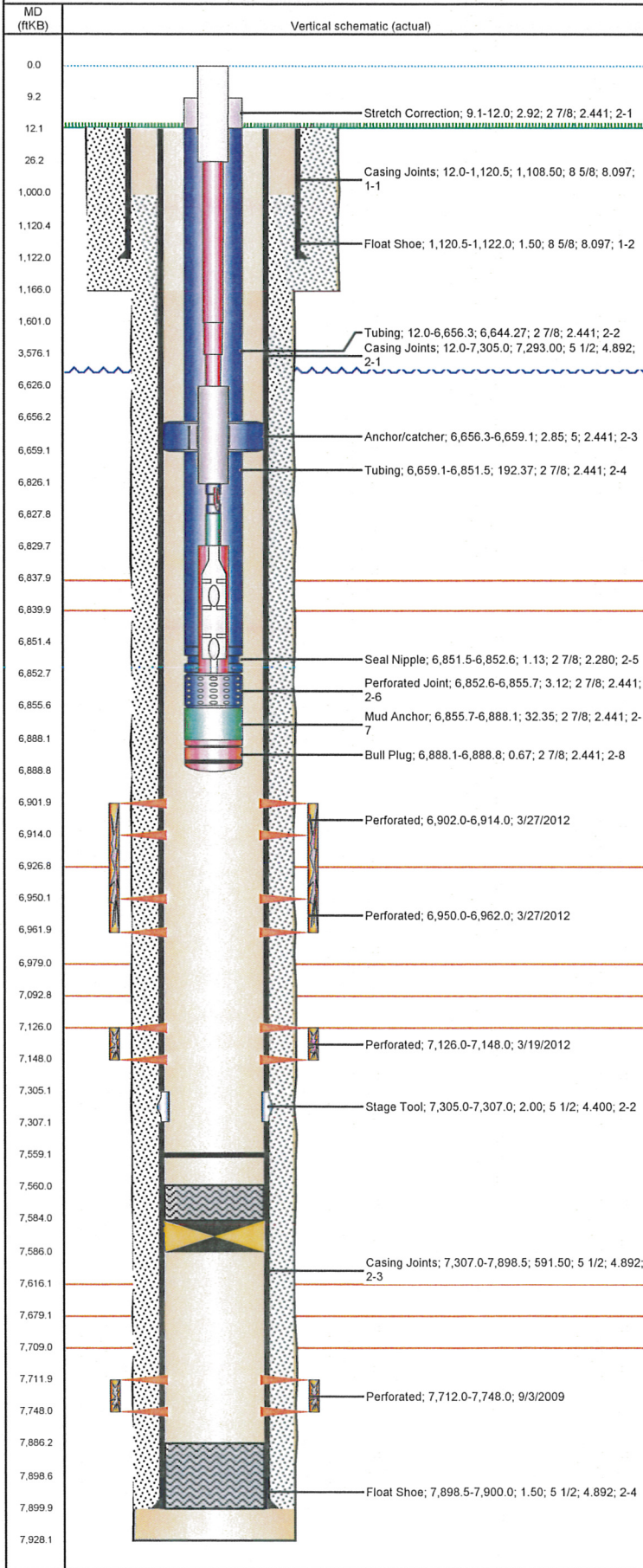


Frac Wellbore Schematic Report

Well Name: EVERITT 14-32

VERTICAL - ORIGINAL HOLE, 8/6/2012 3:18:23 PM



Well Header

API	Business Unit	District	Well Config
05-123-30060	WATTENBERG	25	VERTICAL
Original KB Elevation (ft)	KB - GL / MSL (ftKB)	Spud Date	P & A Date
5,330.00	12.00	5/28/2009	

Comment

DRILL OUT & CHASED DV TOOL @ 7305' 7/29/09

Directions To Well

WCR 122 & 89, NORTH ON 89 4.5 MILES, EAST 2.0 MILES, SOUTH 1.1 MILES AND EAST INTO.

Current PBD (ftKB)

ORIGINAL HOLE - 7,559.0

Surface Location (Congressional)

Quarter 1	Quarter 2	Quarter 3	Quarter 4	Section	Township	Twnshp N...	Range	Rng E/W Dir
		NW	SW	14	11	N	61	W

Bottom Hole Location

North-South Distance (ft)	From N or S Line	East-West Distance (ft)	From E or W Line

Plug Back Total Depths

Date	Depth (ftKB)	Method	Com
6/1/2009	7,886.0	CASING TALLY	FLOAT SHOE
8/3/2009	7,882.0	CASED HOLE LOG	DEPTH LOGGER

Wellbore Sections

Section Des	Size (in)	Act Top (ftKB)	Act Btm (ftKB)
SURFACE	12 1/4	12.0	1,166.0
PRODUCTION	7 7/8	1,166.0	7,928.0

Zone Statuses

Zone Name	Status Date	Status	Job
J SAND	9/21/2009	PR	DRILLING/COMPLETION - ORIGINAL, 5/28/2009 00:00
J SAND	3/15/2012	AB	RECOMPLETION, 3/13/2012 12:00
NIOBRARA	3/31/2012	PR	RECOMPLETION, 3/13/2012 12:00
CODELL	3/31/2012	PR	RECOMPLETION, 3/13/2012 12:00

Casing Strings

Csg Des	Run Date	OD (in)	Wt/Len (lb/ft)	Grade	Top (ftKB)	Set Depth (ftKB)
Surface	5/29/2009	8 5/8	24.00	J-55	12.0	1,122.0
Production	6/1/2009	5 1/2	17.00	N-80	12.0	7,900.0

Cement

Des	Top (ftKB)	Btm (ftKB)
Surface Casing Cement	12.0	1,122.0
Production Casing Cement	1,000.0	7,305.0
Production Casing Cement	7,305.0	7,900.0
Dump Bail	7,560.0	7,584.0

Tubing Components

Item Des	OD (in)	Wt (lb/ft)	Grade	Jts	Len (ft)
Stretch Correction	2 7/8	6.50	J-55	1	2.92
Tubing	2 7/8	6.50	J-55	208	6,644.27
Anchor/catcher	5	6.50	J-55	1	2.85
Tubing	2 7/8	6.50	J-55	6	192.37
Seal Nipple	2 7/8	6.50	J-55	1	1.13
Perforated Joint	2 7/8	6.50	J-55	1	3.12
Mud Anchor	2 7/8	6.50	J-55	1	32.35
Bull Plug	2 7/8	6.50	J-55	1	0.67

Rods & Pumps

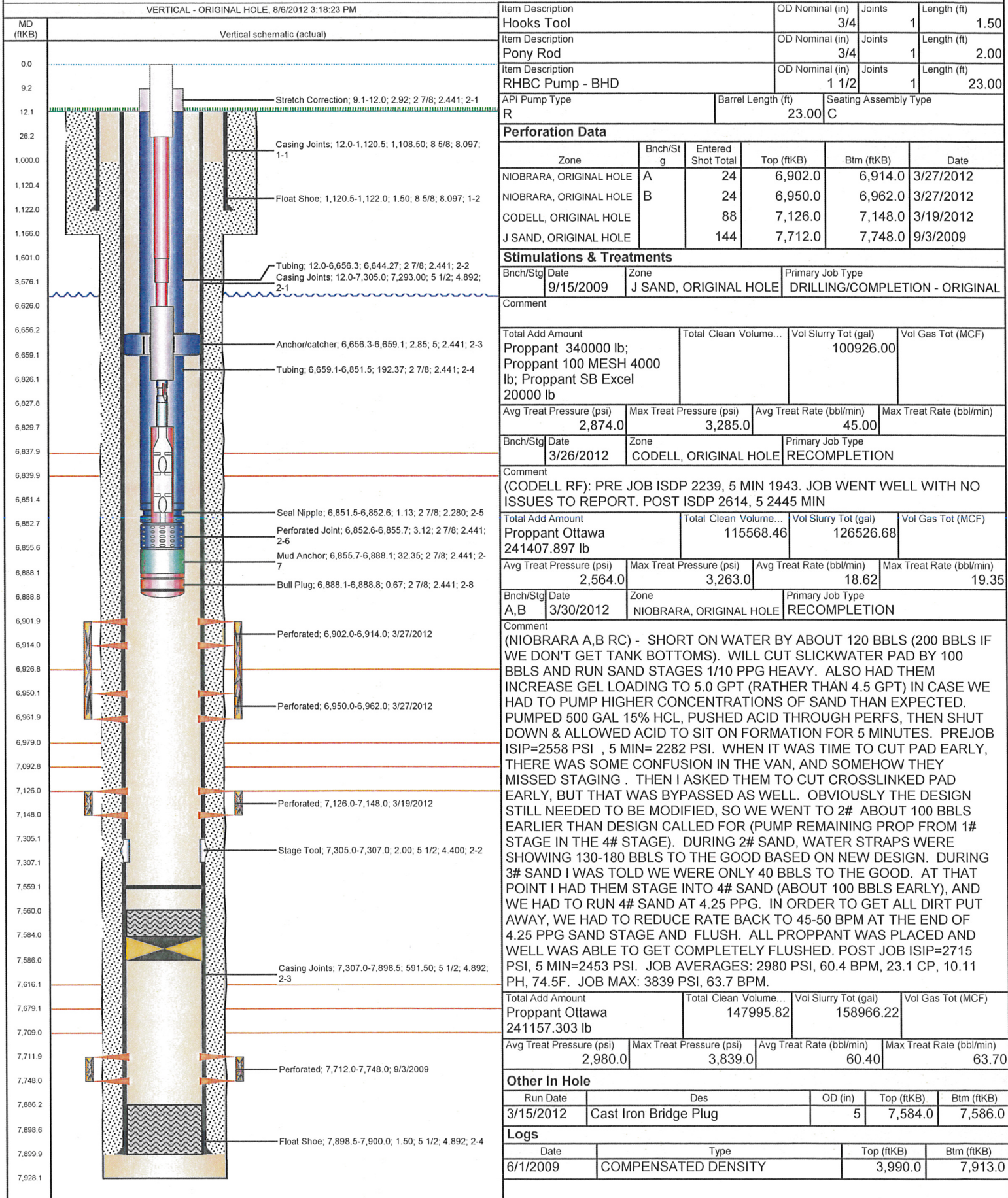
Rod Description	Run Date	Set Depth (ftKB)
Rod	4/5/2012	6,852.6

Comment

Item Description	OD Nominal (in)	Joints	Length (ft)
Polished Rod	1 1/2	1	26.00
Item Description	OD Nominal (in)	Joints	Length (ft)
Sucker Rod	1	63	1,575.00
Item Description	OD Nominal (in)	Joints	Length (ft)
Sucker Rod	7/8	79	1,975.00
Item Description	OD Nominal (in)	Joints	Length (ft)
Sucker Rod	3/4	122	3,050.00
Item Description	OD Nominal (in)	Joints	Length (ft)
Sinker Bar	1 1/2	8	200.00

Frac Wellbore Schematic Report

Well Name: EVERITT 14-32



Well Name: EVERITT 14-32

VERTICAL - ORIGINAL HOLE, 8/6/2012 3:18:23 PM

Logs

