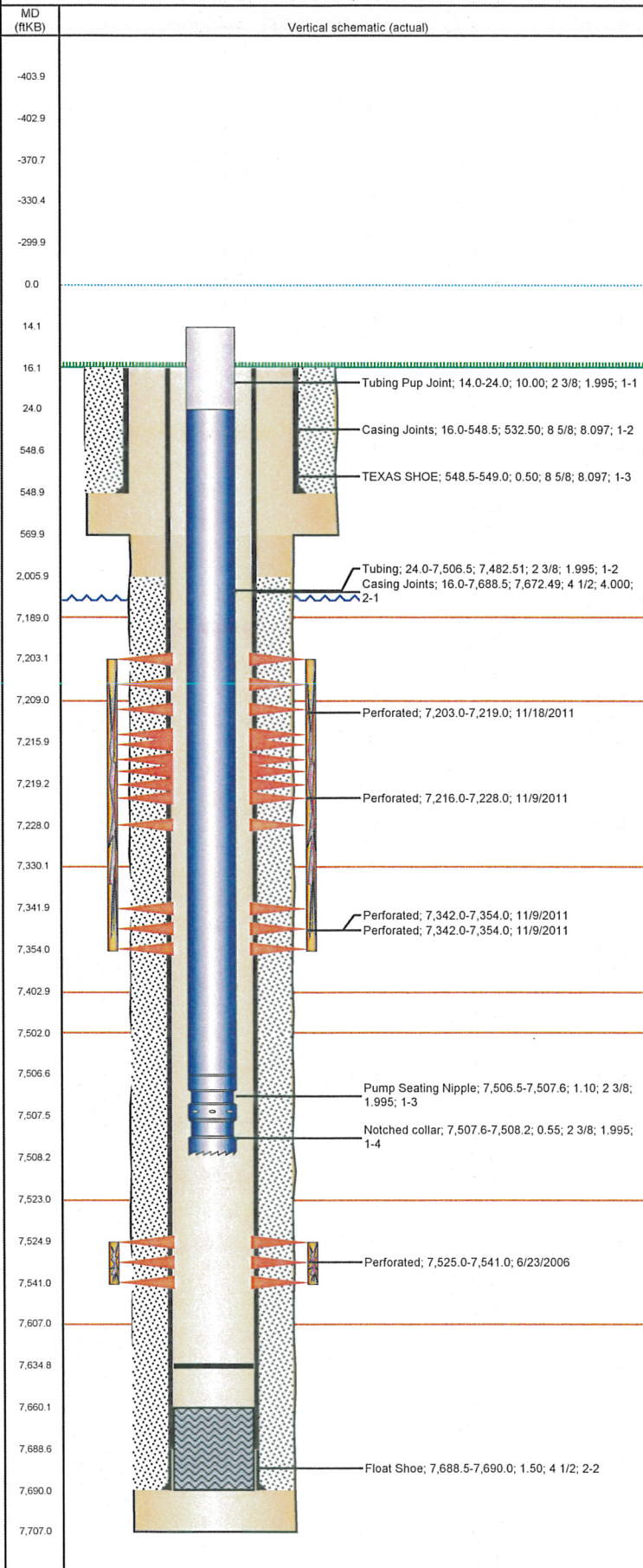


Well Name: STEVE J18-15

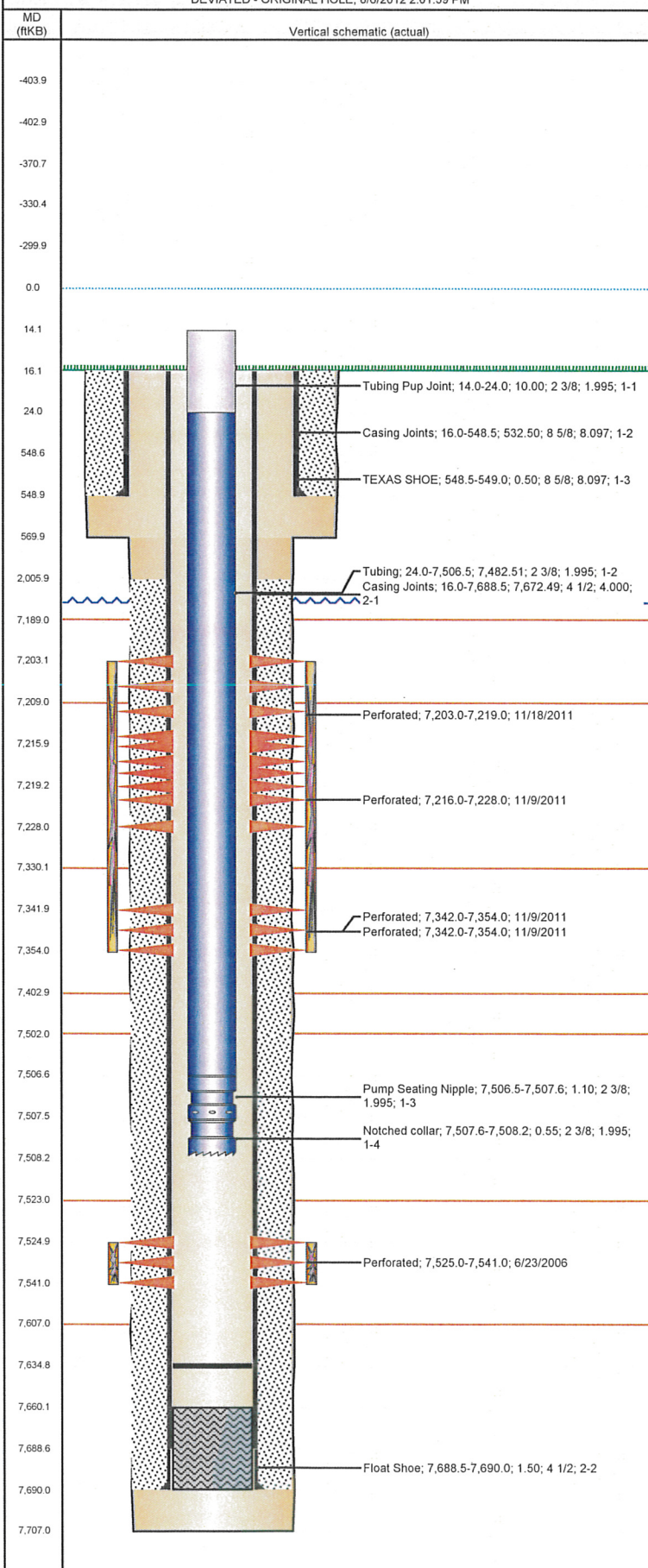
DEVIATED - ORIGINAL HOLE, 8/6/2012 2:01:59 PM



Well Header													
API 05-123-23641		Business Unit WATTENBERG		District 15		Well Config DEVIATED							
Original KB Elevation (ft) 4,964.00		KB - GL / MSL (ftKB) 16.00		Spud Date 6/2/2006		P & A Date							
Comment													
Directions To Well 37TH AVE & 95TH AVE NORTH 1 MILE TO SECOND FARM HOUSE ON LEFT. HEAD EAST 5/10 NORTH INTO													
Current PBTD (ftKB) ORIGINAL HOLE - 7,635.0													
Surface Location (Congressional)													
Quarter 1	Quarter 2	Quarter 3 SW	Quarter 4 SE	Section 18	Township 5 N	Twnshp N... 66 W	Rng E/W Dir						
Bottom Hole Location													
North-South Distance (ft)		From N or S Line		East-West Distance (ft)		From E or W Line							
Plug Back Total Depths													
Date		Depth (ftKB)		Method		Com							
6/7/2006		7,674.0		CASING TALLY		LATCH DOWN COLLAR							
6/23/2006		7,660.0		CASED HOLE LOG		DEPTH LOGGER ON CBL							
Wellbore Sections													
Section Des			Size (in)		Act Top (ftKB)		Act Btm (ftKB)						
SURFACE			12 1/4		16.0		570.0						
PRODUCTION			7 7/8		570.0		7,707.0						
Zone Statuses													
Zone Name		Status Date		Status		Job							
CODELL		7/23/2006		PR		DRILLING/COMPLETION - ORIGINAL, 3/1/2006 00:00							
CODELL		12/12/2011		PR		RE-FRAC & RECOMPLETE, 10/19/2011 08:30							
NIOBRARA		12/12/2011		PR		RE-FRAC & RECOMPLETE, 10/19/2011 08:30							
Casing Strings													
Csg Des		Run Date		OD (in)		Wt/Len (lb/ft)		Grade		Top (ftKB)		Set Depth (ftKB)	
Surface		6/2/2006		8 5/8		24.00		J-55		16.0		549.0	
Production		6/7/2006		4 1/2		11.60		M-80		16.0		7,690.0	
Cement													
Des					Top (ftKB)			Btm (ftKB)					
SURFACE CASING CEMENT					16.0			549.0					
PRODUCTION CASING CEMENT					2,006.0			7,690.0					
Tubing Components													
Item Des			OD (in)		Wt (lb/ft)		Grade		Jts		Len (ft)		
Tubing Pup Joint			2 3/8		4.70		J-55		1		10.00		
Tubing			2 3/8		4.70		J-55		227		7,482.51		
Pump Seating Nipple			2 3/8		4.70		J-55		1		1.10		
Notched collar			2 3/8		4.70		J-55		1		0.55		
Perforation Data													
Zone		Bnch/St g		Entered Shot Total		Top (ftKB)		Btm (ftKB)		Date			
NIOBRARA, ORIGINAL HOLE		A		32		7,203.0		7,219.0		11/18/2011			
NIOBRARA, ORIGINAL HOLE		A		24		7,216.0		7,228.0		11/9/2011			
NIOBRARA, ORIGINAL HOLE		B		24		7,342.0		7,354.0		11/9/2011			
NIOBRARA, ORIGINAL HOLE		B1		24		7,342.0		7,354.0		11/9/2011			
CODELL, ORIGINAL HOLE				64		7,525.0		7,541.0		6/23/2006			
Stimulations & Treatments													
Bnch/Stg		Date		Zone		Primary Job Type							
		7/21/2006		CODELL, ORIGINAL HOLE		DRILLING/COMPLETION - ORIGINAL							
Comment DESIGN CHANGED TO DO HIGH VISCOSITY ON THE FANN DATA.; CUT SAND ABOUT 11,000 LBS. UNABLE TO FLUSH THE WELL COMPLETELY													
Total Add Amount Proppant Ottawa 259347 lb				Total Clean Volume...				Vol Slurry Tot (gal) 128016.00		Vol Gas Tot (MCF)			
Avg Treat Pressure (psi) 6,589.0		Max Treat Pressure (psi) 7,331.0		Avg Treat Rate (bbl/min) 14.80		Max Treat Rate (bbl/min) 16.20							

Well Name: STEVE J18-15

DEVIATED - ORIGINAL HOLE, 8/6/2012 2:01:59 PM



Stimulations & Treatments

Bnch/Stg	Date	Zone	Primary Job Type
	11/9/2011	CODELL, ORIGINAL HOLE	RE-FRAC & RECOMPLETE
Comment (CODELL RF) - BREAK 3389, ISIP 3187, AVER VISC 24, AVER PH 10.24, AVER TEMP 67.19. TUB ON BLENDER RAN OFF ON BEGINNING OF 4#.			
Total Add Amount		Total Clean Volume...	Vol Slurry Tot (gal)
Proppant Ottawa		132784.68	143650.92
239096.505 lb			
Avg Treat Pressure (psi)		Max Treat Pressure (psi)	Avg Treat Rate (bbl/min)
3,833.0		4,491.0	18.97
			Max Treat Rate (bbl/min)
			18.98

Bnch/Stg	Date	Zone	Primary Job Type
	11/9/2011	NIOBRARA, ORIGINAL HOLE	RE-FRAC & RECOMPLETE
Comment (NIOBRARA RC) - COULD NOT BREAK FORMATION DOWN. ACID SPOTTED OVER PERFS PUSHED 22 BBL DOWN HOLE BEFORE SURGING. PUMPED A TOTAL OF 38.23 BBL BEFORE TRYING TO FLOW BACK WELL. WELL WOULD NOT FLOWBACK. SHOT SECOND GUN IN THE B BENCH. FORMATION WOULD STILL NOT BREAK, PUMPED 11.58 BBL.			
Total Add Amount		Total Clean Volume...	Vol Slurry Tot (gal)
			Vol Gas Tot (MCF)
Avg Treat Pressure (psi)		Max Treat Pressure (psi)	Avg Treat Rate (bbl/min)
			Max Treat Rate (bbl/min)

Bnch/Stg	Date	Zone	Primary Job Type
AB	11/22/2011	NIOBRARA, ORIGINAL HOLE	RE-FRAC & RECOMPLETE
Comment (NIO AB RC) OPEN WELL WITH 6 PSI, FORMATION BREAK 3205 PSI @ 4.6 BPM. PRE-TREATMENT ISIP= 2449 PSI, FRAC GRAD= .77 PSI/FT. POST-TREATMENT ISIP= 2630 PSI, 5 MIN= 2417 PSI, AVGS: VISC= 17.4 CP, PH= 10.38, TEMP= 66.40 F, PRESS= 3390 PSI, RATE= 54.19 BPM, MAXIMUM: PRESS= 4565 PSI, RATE= 57.04 BPM. JOB WENT WELL WITH NO ISSUES TO REPORT.			
Total Add Amount		Total Clean Volume...	Vol Slurry Tot (gal)
Ottawa 242401.104 lb		148176.84	159195.55
Avg Treat Pressure (psi)		Max Treat Pressure (psi)	Avg Treat Rate (bbl/min)
3,390.0		4,565.0	54.19
			Max Treat Rate (bbl/min)
			57.04

Run Date	Des	OD (in)	Top (ftKB)	Btm (ftKB)

Date	Type	Top (ftKB)	Btm (ftKB)
6/7/2006	CBL/CCL/GR	1,800.0	7,657.0
6/7/2006	COMPENSATED DENSITY	2,700.0	7,687.0
6/7/2006	INDUCTION	549.0	7,707.0

Run Date	Des	OD (in)	Top (ftKB)	Btm (ftKB)

Date	Type	Top (ftKB)	Btm (ftKB)
6/7/2006	CBL/CCL/GR	1,800.0	7,657.0
6/7/2006	COMPENSATED DENSITY	2,700.0	7,687.0
6/7/2006	INDUCTION	549.0	7,707.0