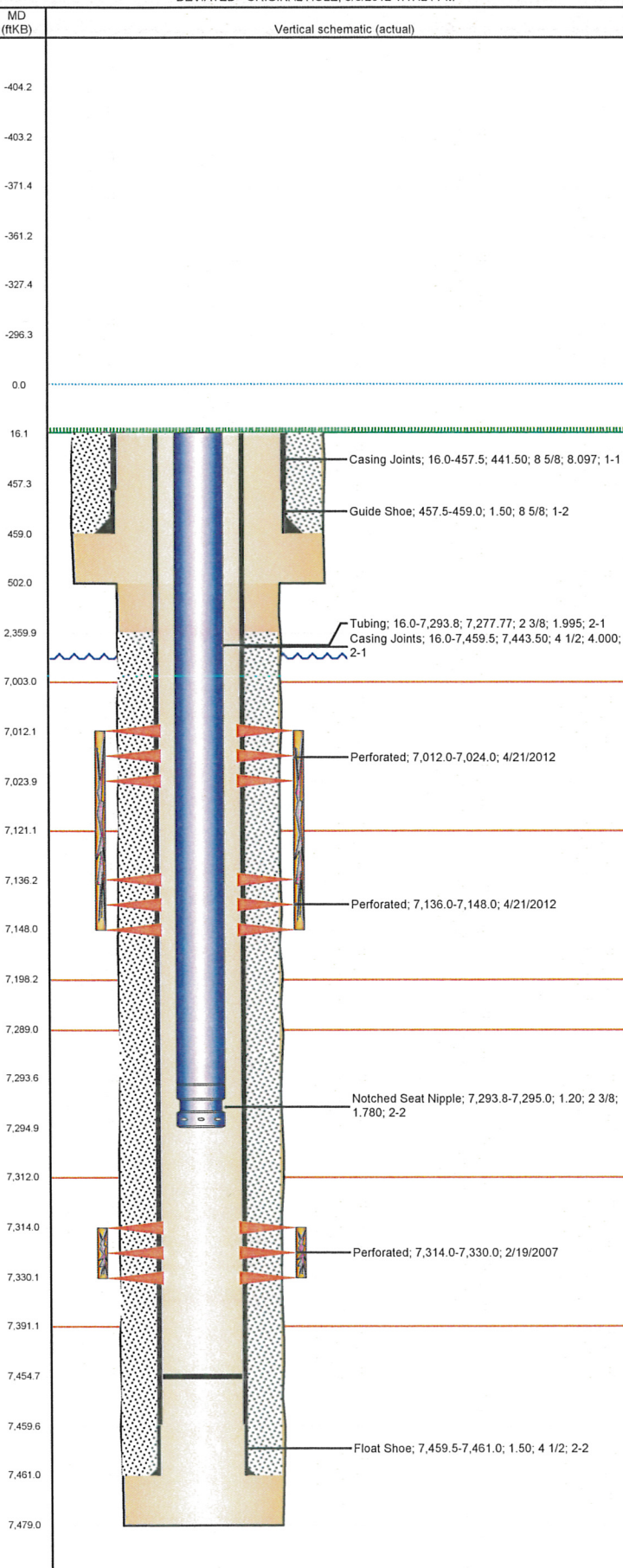


Well Name: DUKE J04-33

DEVIATED - ORIGINAL HOLE, 8/6/2012 1:47:24 PM



Well Header

API 05-123-27303	Business Unit WATTENBERG	District 15	Well Config DEVIATED
Original KB Elevation (ft) 4,798.00	KB - GL / MSL (ftKB) 16.00	Spud Date 1/4/2007	P & A Date

Comment

NOTE TO FILE 2012 NOBLE KEY OPENS GATE

Directions To Well

71ST AVE & 10TH STREET NORTH 3/10 THROUGH OLD HP/FACTORY GATE NORTH 1/10 INTO.

Current PBTD (ftKB)

ORIGINAL HOLE - 7,454.6

Surface Location (Congressional)

Quarter 1	Quarter 2	Quarter 3	Quarter 4	Section	Township	Twnshp N...	Range	Rng E/W Dir
		NW	SW	4	5 N		66	W

Bottom Hole Location

North-South Distance (ft) 1,418.0	From N or S Line FSL	East-West Distance (ft) 86.0	From E or W Line FEL
--------------------------------------	-------------------------	---------------------------------	-------------------------

Plug Back Total Depths

Date	Depth (ftKB)	Method	Com
1/11/2007	7,446.0	CASING TALLY	HALCO FLOAT
2/19/2007	7,419.0	CASED HOLE LOG	DEPTH LOGGER ON CBL

Wellbore Sections

Section Des	Size (in)	Act Top (ftKB)	Act Btm (ftKB)
SURFACE	12 1/4	16.0	502.0
PRODUCTION	7 7/8	502.0	7,479.0

Zone Statuses

Zone Name	Status Date	Status	Job
CODELL	3/28/2007	PR	DRILLING/COMPLETION - ORIGINAL, 1/4/2007 00:00
CODELL	4/22/2012	PR	RE-FRAC & RECOMPLETE, 4/11/2012 06:00
NIOBRARA	4/22/2012	PR	RE-FRAC & RECOMPLETE, 4/11/2012 06:00

Casing Strings

Csg Des	Run Date	OD (in)	Wt/Len (lb/ft)	Grade	Top (ftKB)	Set Depth (ftKB)
Surface	1/5/2007	8 5/8	24.00	J-55	16.0	459.0
Production	1/11/2007	4 1/2	11.60	M-80	16.0	7,461.0

Cement

Des	Top (ftKB)	Btm (ftKB)
SURFACE CASING CEMENT	16.0	459.0
PRODUCTION CASING CEMENT	2,360.0	7,461.0

Tubing Components

Item Des	OD (in)	Wt (lb/ft)	Grade	Jts	Len (ft)
Tubing	2 3/8	4.70	J-55	236	7,277.77
Notched Seat Nipple	2 3/8	1.10		1	1.20

Perforation Data

Zone	Bnch/St g	Entered Shot Total	Top (ftKB)	Btm (ftKB)	Date
NIOBRARA, ORIGINAL HOLE		24	7,012.0	7,024.0	4/21/2012
NIOBRARA, ORIGINAL HOLE		24	7,136.0	7,148.0	4/21/2012
CODELL, ORIGINAL HOLE		64	7,314.0	7,330.0	2/19/2007

Stimulations & Treatments

Bnch/Stg	Date	Zone	Primary Job Type
	3/21/2007	CODELL, ORIGINAL HOLE	DRILLING/COMPLETION - ORIGINAL

Comment

Total Add Amount Proppant Ottawa 270660 lb	Total Clean Volume... 127260.00	Vol Slurry Tot (gal) 17.50	Vol Gas Tot (MCF) 17.80
Avg Treat Pressure (psi) 7,494.0	Max Treat Pressure (psi) 7,790.0	Avg Treat Rate (bbl/min) 17.50	Max Treat Rate (bbl/min) 17.80

Bnch/Stg	Date	Zone	Primary Job Type
	4/21/2012	CODELL, ORIGINAL HOLE	RE-FRAC & RECOMPLETE

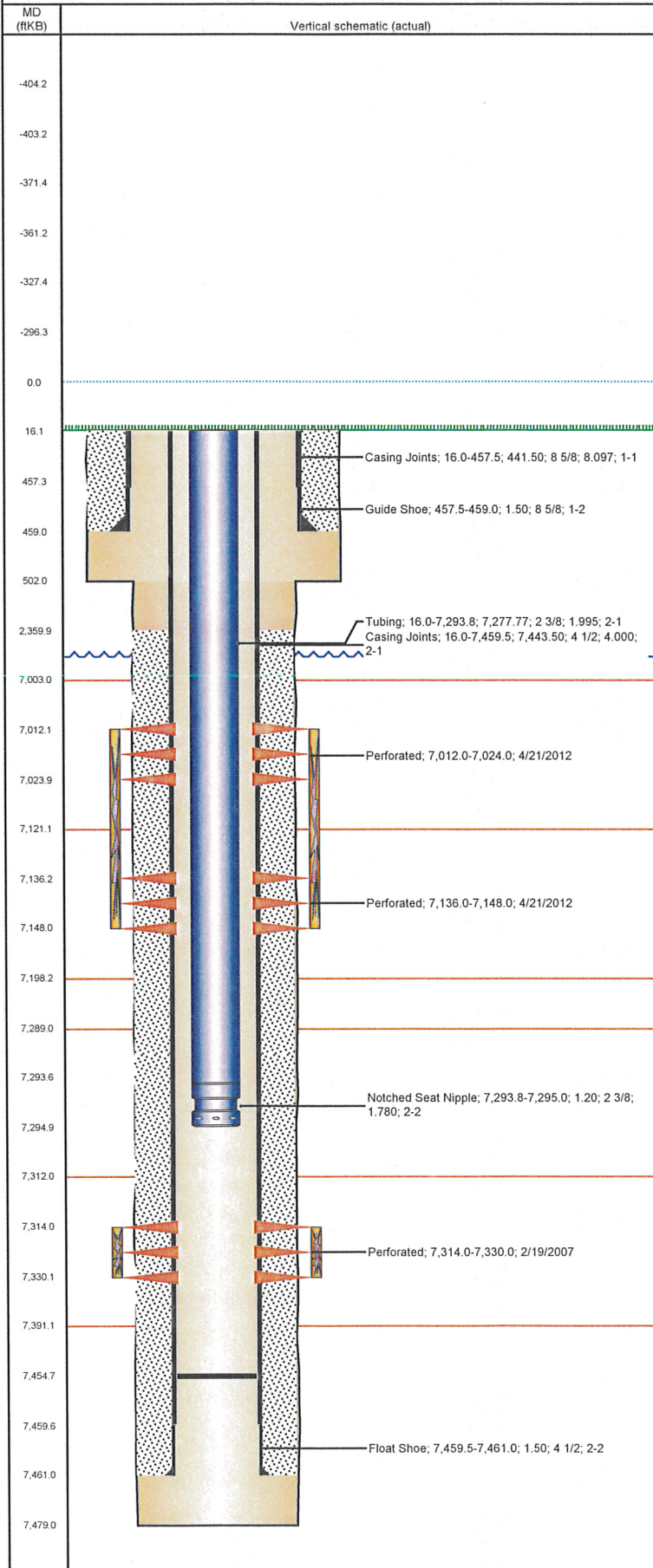
Comment

(codell refrac) 5 min isip was at 1115 psi. up the rate to 18 bpm. job went good 5 min shut in psi was 3736.

Total Add Amount Proppant Ottawa 235030.9 lb	Total Clean Volume... 134070.30	Vol Slurry Tot (gal) 144746.70	Vol Gas Tot (MCF)
Avg Treat Pressure (psi) 3,893.0	Max Treat Pressure (psi) 4,273.0	Avg Treat Rate (bbl/min) 18.30	Max Treat Rate (bbl/min) 18.90

Well Name: DUKE J04-33

DEVIATED - ORIGINAL HOLE, 8/6/2012 1:47:24 PM



Stimulations & Treatments

Brnch/Stg	Date	Zone	Primary Job Type	
	4/21/2012	NIOBRARA, ORIGINAL HOLE	RE-FRAC & RECOMPLETE	
Comment (niobrara recomplete) 5 min shut in psi was 3536 everything went good.				
Total Add Amount		Total Clean Volume...	Vol Slurry Tot (gal)	Vol Gas Tot (MCF)
Proppant Ottawa 249492.8 lb		159423.18	170630.04	
Avg Treat Pressure (psi)		Max Treat Pressure (psi)	Avg Treat Rate (bbl/min)	Max Treat Rate (bbl/min)
4,309.0		4,873.0	42.50	46.10

Other In Hole

Run Date	Des	OD (in)	Top (ftKB)	Btm (ftKB)

Logs

Date	Type	Top (ftKB)	Btm (ftKB)
1/11/2007	COMPENSATED DENSITY	2,000.0	7,474.0
1/11/2007	INDUCTION	460.0	7,474.0
2/19/2007		460.0	7,474.0