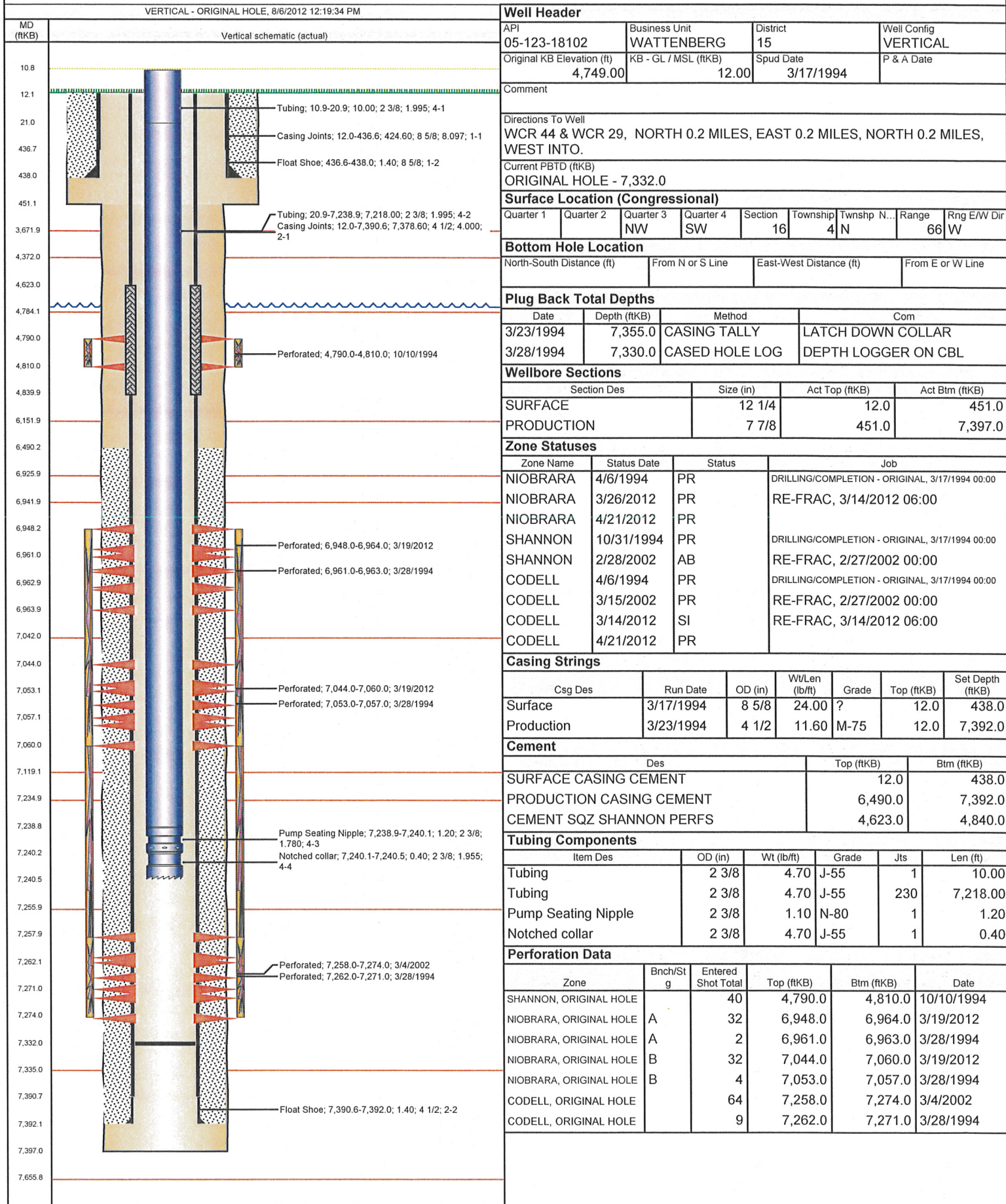


Well Name: SMITS 16-1216



Well Header

API	Business Unit	District	Well Config
05-123-18102	WATTENBERG	15	VERTICAL
Original KB Elevation (ft)	KB - GL / MSL (ftKB)	Spud Date	P & A Date
4,749.00	12.00	3/17/1994	

Comment

Directions To Well
WCR 44 & WCR 29, NORTH 0.2 MILES, EAST 0.2 MILES, NORTH 0.2 MILES, WEST INTO.

Current PBTD (ftKB)

ORIGINAL HOLE - 7,332.0

Surface Location (Congressional)

Quarter 1	Quarter 2	Quarter 3	Quarter 4	Section	Township	Twnshp N...	Range	Rng E/W Dir
		NW	SW	16	4	N	66	W

Bottom Hole Location

North-South Distance (ft)	From N or S Line	East-West Distance (ft)	From E or W Line
---------------------------	------------------	-------------------------	------------------

Plug Back Total Depths

Date	Depth (ftKB)	Method	Com
3/23/1994	7,355.0	CASING TALLY	LATCH DOWN COLLAR
3/28/1994	7,330.0	CASED HOLE LOG	DEPTH LOGGER ON CBL

Wellbore Sections

Section Des	Size (in)	Act Top (ftKB)	Act Btm (ftKB)
SURFACE	12 1/4	12.0	451.0
PRODUCTION	7 7/8	451.0	7,397.0

Zone Statuses

Zone Name	Status Date	Status	Job
NIOBRARA	4/6/1994	PR	DRILLING/COMPLETION - ORIGINAL, 3/17/1994 00:00
NIOBRARA	3/26/2012	PR	RE-FRAC, 3/14/2012 06:00
NIOBRARA	4/21/2012	PR	
SHANNON	10/31/1994	PR	DRILLING/COMPLETION - ORIGINAL, 3/17/1994 00:00
SHANNON	2/28/2002	AB	RE-FRAC, 2/27/2002 00:00
CODELL	4/6/1994	PR	DRILLING/COMPLETION - ORIGINAL, 3/17/1994 00:00
CODELL	3/15/2002	PR	RE-FRAC, 2/27/2002 00:00
CODELL	3/14/2012	SI	RE-FRAC, 3/14/2012 06:00
CODELL	4/21/2012	PR	

Casing Strings

Csg Des	Run Date	OD (in)	Wt/Len (lb/ft)	Grade	Top (ftKB)	Set Depth (ftKB)
Surface	3/17/1994	8 5/8	24.00	?	12.0	438.0
Production	3/23/1994	4 1/2	11.60	M-75	12.0	7,392.0

Cement

Des	Top (ftKB)	Btm (ftKB)
SURFACE CASING CEMENT	12.0	438.0
PRODUCTION CASING CEMENT	6,490.0	7,392.0
CEMENT SQZ SHANNON PERFS	4,623.0	4,840.0

Tubing Components

Item Des	OD (in)	Wt (lb/ft)	Grade	Jts	Len (ft)
Tubing	2 3/8	4.70	J-55	1	10.00
Tubing	2 3/8	4.70	J-55	230	7,218.00
Pump Seating Nipple	2 3/8	1.10	N-80	1	1.20
Notched collar	2 3/8	4.70	J-55	1	0.40

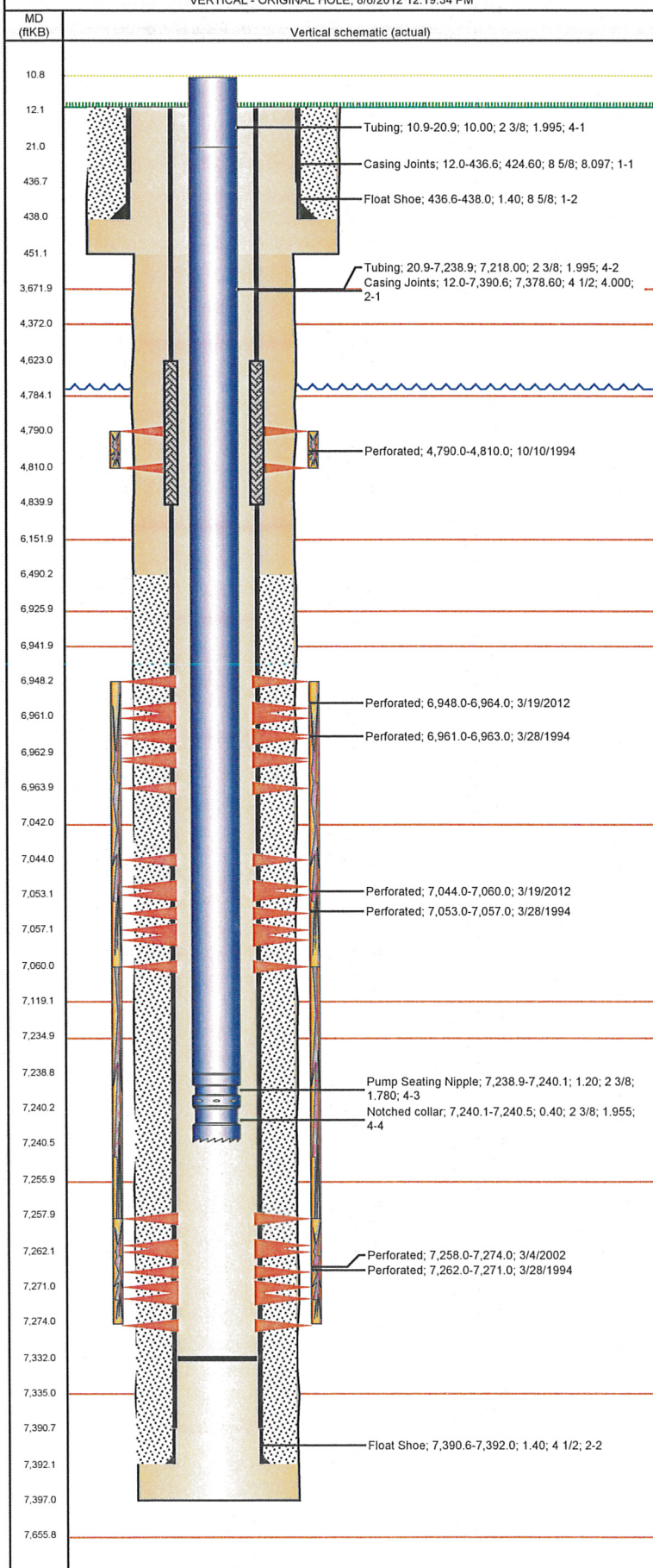
Perforation Data

Zone	Bnch/St g	Entered Shot Total	Top (ftKB)	Btm (ftKB)	Date
SHANNON, ORIGINAL HOLE		40	4,790.0	4,810.0	10/10/1994
NIOBRARA, ORIGINAL HOLE	A	32	6,948.0	6,964.0	3/19/2012
NIOBRARA, ORIGINAL HOLE	A	2	6,961.0	6,963.0	3/28/1994
NIOBRARA, ORIGINAL HOLE	B	32	7,044.0	7,060.0	3/19/2012
NIOBRARA, ORIGINAL HOLE	B	4	7,053.0	7,057.0	3/28/1994
CODELL, ORIGINAL HOLE		64	7,258.0	7,274.0	3/4/2002
CODELL, ORIGINAL HOLE		9	7,262.0	7,271.0	3/28/1994

Frac Wellbore Schematic Report

Well Name: SMITS 16-1216

VERTICAL - ORIGINAL HOLE, 8/6/2012 12:19:34 PM



Stimulations & Treatments

Bnch/Stg	Date	Zone	Primary Job Type
	3/29/1994	NIORARA-CODELL, ORIGINAL HOLE	DRILLING/COMPLETION - ORIGINAL

Comment
CDL/NIO LIMITED ENTRY

Total Add Amount	Total Clean Volume...	Vol Slurry Tot (gal)	Vol Gas Tot (MCF)
Proppant 416300 lb		91560.00	
Avg Treat Pressure (psi)	Max Treat Pressure (psi)	Avg Treat Rate (bbl/min)	Max Treat Rate (bbl/min)
3,901.0	4,645.0	24.10	25.60

Bnch/Stg	Date	Zone	Primary Job Type
	10/11/1994	SHANNON, ORIGINAL HOLE	DRILLING/COMPLETION - ORIGINAL

Comment

Total Add Amount	Total Clean Volume...	Vol Slurry Tot (gal)	Vol Gas Tot (MCF)
Proppant 300000 lb		84756.00	
Avg Treat Pressure (psi)	Max Treat Pressure (psi)	Avg Treat Rate (bbl/min)	Max Treat Rate (bbl/min)
1,750.0	2,200.0	26.00	26.00

Bnch/Stg	Date	Zone	Primary Job Type
	3/14/2002	CODELL, ORIGINAL HOLE	RE-FRAC

Comment

Total Add Amount	Total Clean Volume...	Vol Slurry Tot (gal)	Vol Gas Tot (MCF)
Proppant Ottawa 249920 lb		131460.00	
Avg Treat Pressure (psi)	Max Treat Pressure (psi)	Avg Treat Rate (bbl/min)	Max Treat Rate (bbl/min)
4,850.0	5,475.0	11.20	12.20

Bnch/Stg	Date	Zone	Primary Job Type
	3/25/2012	CODELL, ORIGINAL HOLE	RE-FRAC

Comment

INITIAL - 25, INITIAL CASING - 0, 35 BBL TO LOAD TUBING, CASING LOADED, KEEP 10-50 PSI ON CASING DURING JOB. TUBING PRESSURE BROUGHT UP TO 3800PSI; PACKER HOLDING. WENT TO ACID, SPOTTED ACID AT NIO PERFS AND LET SOAK FOR 5MIN. ISIP - 3068, 5SIP - 1880. PUMPS KICKED OUT AT END OF XLINK PAD, EXTENDED PAD UNTIL RATE LINED OUT. LOST ALL RATE DURING 1PPG DUE TO PUMP KICKOUT ISSUES (1000 PSI BELOW MAX OF 7500). KICKOUT ISSUES AGAIN DURING 3PPG CAUSED ALL RATE TO BE LOST (900PSI BELOW MAX PRESSURE OF 7500). FINAL ISIP - 3862, 5SIP - 3584, AVG RATE - 22.8, AVG PRESS - 6330, AVG VISC - 18, AVG PH - 10.4, AVG TEMP - 66, MAX RATE - 26.4, MAX PRESS - 7268. BLED CASING PRESSURE BACK TO 0PSI AFTER JOB COMPLETE.

Total Add Amount	Total Clean Volume...	Vol Slurry Tot (gal)	Vol Gas Tot (MCF)
Proppant Ottawa 253178.004 lb	156627.24	168106.68	
Avg Treat Pressure (psi)	Max Treat Pressure (psi)	Avg Treat Rate (bbl/min)	Max Treat Rate (bbl/min)
6,330.0	7,268.0	22.80	26.40

Other In Hole

Run Date	Des	OD (in)	Top (ftKB)	Btm (ftKB)

Logs

Date	Type	Top (ftKB)	Btm (ftKB)
3/23/1994	COMPENSATED DENSITY	4,330.0	7,395.0
3/23/1994	INDUCTION	438.0	7,395.0
3/28/1994	CEMENT BOND	4,100.0	7,325.0