

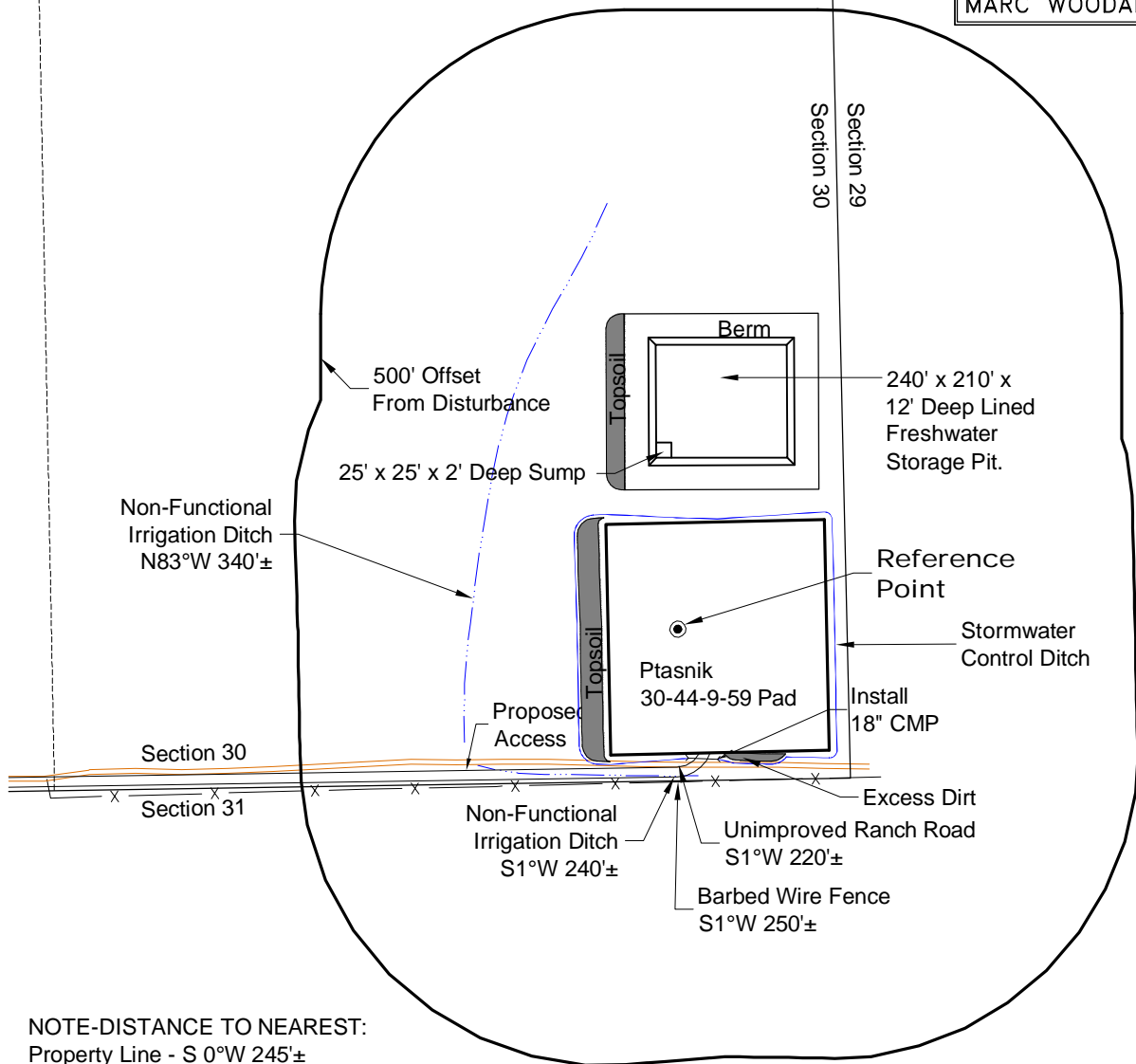
# LOCATION DRAWING

**VEGETATION:**  
GRASSLAND PASTURE

**SURFACE USE:**  
GRAZING

## REFERENCE POINT

LATITUDE: 40.71464
LONGITUDE: -104.01237
FOOTAGE: 250 FSL 279 FEL
GROUND ELEVATION: 4901.6
PDOP: 2.2 DATE: 6/10/2011
INSTRUMENT OPERATOR: MARC WOODARD



## NOTE-DISTANCE TO NEAREST:

Property Line - S 0°W 245'±  
Public Road - CR 100 - S 88° W 2.0 Miles  
Building - S 87° W 1.9 Miles  
Railroad - S 32.3 Miles  
Powerline - S 88° W 2.0 Miles

**DISTURBANCE ACREAGE:**  
4.2± DRILLING OPERATIONS  
2.0± FRESHWATER STORAGE PIT  
1.0± INTERIM RECLAIM

## NOTE:

ALL PRODUCTION FACILITIES WILL BE ON PAD.

7/27/12



North

0 300 600

Graphic Scale in Feet  
1 inch = 300 feet



LAND SURVEYING AND MAPPING  
LAFAYETTE - WINTER PARK  
Ph 303 666 0379 Fx 303 665 6320

**CARRIZO OIL & GAS, INC**  
PTASNIK 30-44-9-59 PAD

SE1/4 SE1/4 SEC. 30 T9N R59W  
6th PM WELD COUNTY COLORADO