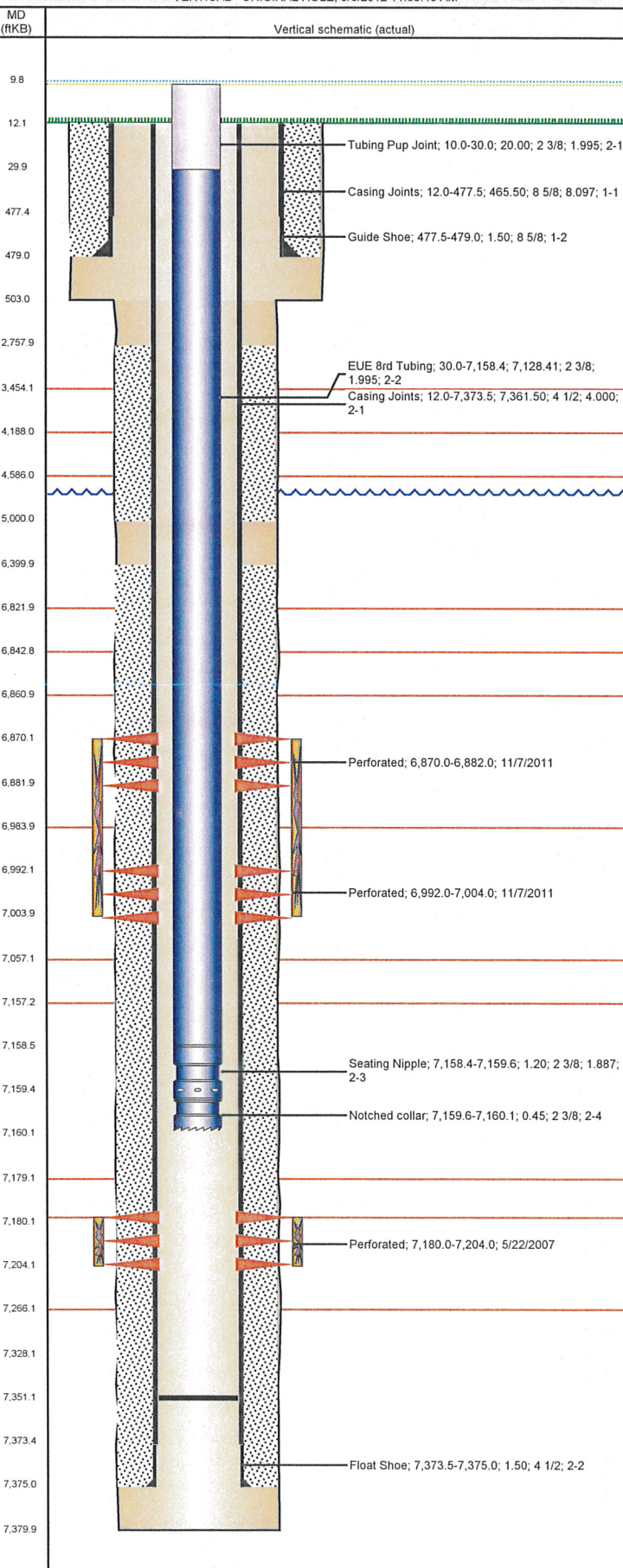


Well Name: KODAK 34-45

VERTICAL - ORIGINAL HOLE, 8/6/2012 11:36:43 AM



Well Header

API 05-123-27392	Business Unit WATTENBERG	District 15	Well Config VERTICAL
Original KB Elevation (ft) 4,753.00	KB - GL / MSL (ftKB) 12.00	Spud Date 3/20/2007	P & A Date

Comment

Directions To Well
HWY 257 & POUDRE RIVER TRAIL ROAD. EAST 9/10, SOUTH 3/10, EAST INTO.

Current PBTD (ftKB)
ORIGINAL HOLE - 7,351.0

Surface Location (Congressional)

Quarter 1	Quarter 2	Quarter 3 NE	Quarter 4 SE	Section 34	Township 6 N	Twnshp N...	Range 67 W	Rng E/W Dir
-----------	-----------	-----------------	-----------------	---------------	-----------------	-------------	---------------	-------------

Bottom Hole Location

North-South Distance (ft)	From N or S Line	East-West Distance (ft)	From E or W Line
---------------------------	------------------	-------------------------	------------------

Plug Back Total Depths

Date	Depth (ftKB)	Method	Com
3/25/2007	7,356.0	CASING TALLY	PBTD GIVEN ON DAILIES
5/18/2007	7,328.0	CASED HOLE LOG	DEPTH LOGGER

Wellbore Sections

Section Des	Size (in)	Act Top (ftKB)	Act Btm (ftKB)
SURFACE	12 1/4	12.0	503.0
PRODUCTION	7 7/8	503.0	7,380.0

Zone Statuses

Zone Name	Status Date	Status	Job
CODELL	11/29/2007	PR	DRILLING/COMPLETION - ORIGINAL, 3/20/2007 00:00
CODELL	12/19/2011	PR	RE-FRAC & RECOMPLETE, 10/25/2011 14:30
NIOBRARA	12/19/2011	PR	RE-FRAC & RECOMPLETE, 10/25/2011 14:30

Casing Strings

Csg Des	Run Date	OD (in)	Wt/Len (lb/ft)	Grade	Top (ftKB)	Set Depth (ftKB)
Surface	3/20/2007	8 5/8	24.00	K-55	12.0	479.0
Production	3/24/2007	4 1/2	11.60	M-80	12.0	7,375.0

Cement

Des	Top (ftKB)	Btm (ftKB)
SURFACE CASING CEMENT	12.0	479.0
PRODUCTION CASING CEMENT	2,758.0	5,000.0
Production Casing Cement	6,400.0	7,375.0

Tubing Components

Item Des	OD (in)	Wt (lb/ft)	Grade	Jts	Len (ft)
Tubing Pup Joint	2 3/8	4.70	J-55	2	20.00
EUE 8rd Tubing	2 3/8	4.70	J-55	230	7,128.41
Seating Nipple	2 3/8	5.40	J-55	1	1.20
Notched collar	2 3/8		J-55	1	0.45

Perforation Data

Zone	Bnch/St g	Entered Shot Total	Top (ftKB)	Btm (ftKB)	Date
NIOBRARA, ORIGINAL HOLE	B	24	6,870.0	6,882.0	11/7/2011
NIOBRARA, ORIGINAL HOLE	C	24	6,992.0	7,004.0	11/7/2011
CODELL, ORIGINAL HOLE		96	7,180.0	7,204.0	5/22/2007

Stimulations & Treatments

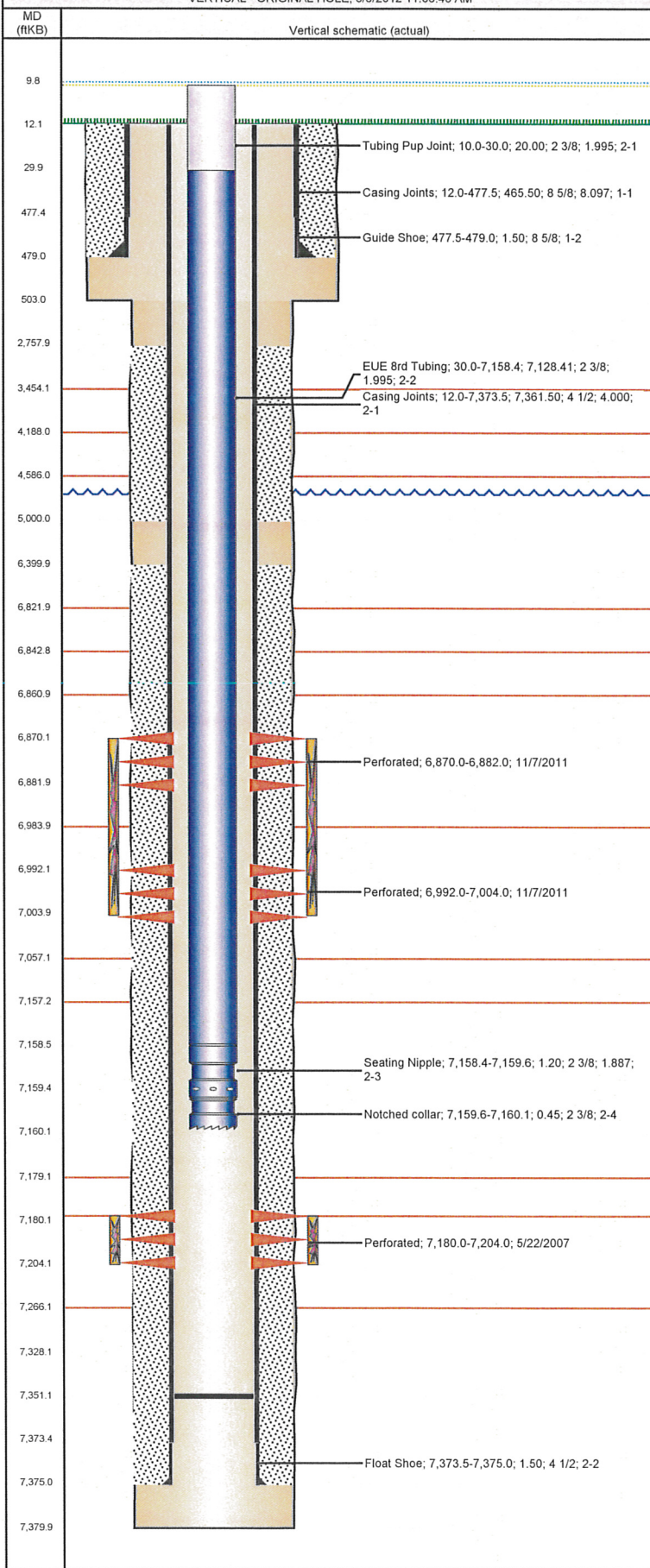
Bnch/Stg	Date	Zone	Primary Job Type
	5/23/2007	CODELL, ORIGINAL HOLE	DRILLING/COMPLETION - ORIGINAL

Comment

Total Add Amount Proppant 243238 lb; Proppant SB Excel 8000 lb	Total Clean Volume...	Vol Slurry Tot (gal) 80388.00	Vol Gas Tot (MCF)
Avg Treat Pressure (psi) 3,345.0	Max Treat Pressure (psi) 3,604.0	Avg Treat Rate (bbl/min) 25.80	Max Treat Rate (bbl/min)

Well Name: KODAK 34-45

VERTICAL - ORIGINAL HOLE, 8/6/2012 11:36:43 AM



Stimulations & Treatments

Bnch/Stg	Date	Zone	Primary Job Type	
	11/7/2011	CODELL, ORIGINAL HOLE	RE-FRAC & RECOMPLETE	
Comment				
(CODELL):DID NOT HAVE ENOUGH CRB ON LOCATION RAN THE CRB LT AT A 1 PPT UNTIL WE START 4 PPG RAN IT AT A 2 PPT. THE 5 MIN SHUT IN PSI WAS 3164 PSI.				
Total Add Amount		Total Clean Volume...	Vol Slurry Tot (gal)	Vol Gas Tot (MCF)
Proppant Ottawa 239338.004 lb		132523.02	143387.58	
Avg Treat Pressure (psi)	Max Treat Pressure (psi)	Avg Treat Rate (bbl/min)	Max Treat Rate (bbl/min)	
3,555.0	3,788.0	14.03	14.40	
Bnch/Stg	Date	Zone	Primary Job Type	
	11/7/2011	NIOBRARA, ORIGINAL HOLE	RE-FRAC & RECOMPLETE	
Comment				
(NIOBRARA): 5MIN SHUT IN PSI 3261. WE WERE 10,000 OFF ON SAND				
Total Add Amount		Total Clean Volume...	Vol Slurry Tot (gal)	Vol Gas Tot (MCF)
Proppant Ottawa 238716 lb		150706.92	161524.45	
Avg Treat Pressure (psi)	Max Treat Pressure (psi)	Avg Treat Rate (bbl/min)	Max Treat Rate (bbl/min)	
4,365.0	4,609.0	45.10	48.30	

Other In Hole

Run Date	Des	OD (in)	Top (ftKB)	Btm (ftKB)

Logs

Date	Type	Top (ftKB)	Btm (ftKB)
3/25/2007	COMPENSATED DENSITY	3,400.0	7,348.0
3/25/2007	INDUCTION	491.0	7,368.0
5/18/2007	CBL/CCL/GR	2,758.0	7,326.0