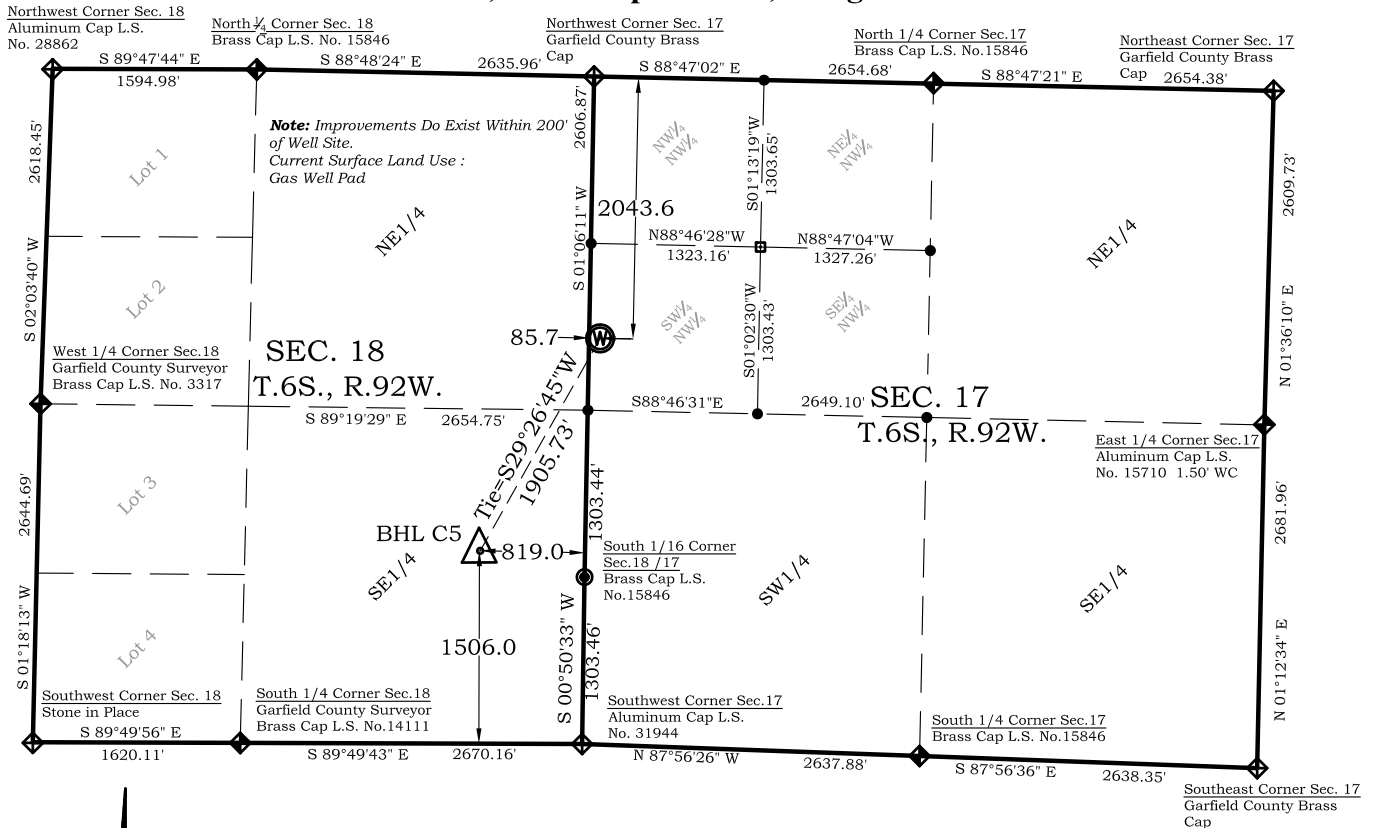


Well Location Plat

Dever C5

Section 17, Township 6 South, Range 92 West



Bottom Hole: Dever C5

1506' FSL
819' FEL
NAD83
Lat: 39.523599215°N
Long: 107.702820908°W
NAD27
Lat: 39.523618701°N
Long: 107.702204400°W

Surface: Dever C5

2044' FNL
86' FWL
Gnd El= 5585.6
Pad El= 5585.6
NAD83
Lat: 39.528229140°N
Long: 107.699678680°W
NAD27
Lat: 39.528248626°N
Long: 107.699062224°W
UTM 13 NORTH
NAD 1983
NORTHING
14366369.238
EASTING
879137.788

Prepared For Antero Resources:
Proposed Dever C5 Well Situate in The SW 1/4 NW 1/4 Section 17, Township 6 South, Range 92 West of the 6 th. Principal Meridian, County of Garfield, State of Colorado

SURVEYOR'S CERTIFICATE

I, SCOTT E. AIBNER, A REGISTERED LAND SURVEYOR, LICENSED UNDER THE LAWS OF THE STATE OF COLORADO DO HEREBY CERTIFY THAT THE SURVEY SHOWN HEREON WAS PREPARED BY RIVER VALLEY SURVEY, INC., FOR ANTERO RESOURCES, BY ME OR UNDER MY DIRECT SUPERVISION AND THAT THIS PLAT IS A TRUE REPRESENTATION THEREOF.

SCOTT E. AIBNER
PROFESSIONAL LAND SURVEYOR
31143

BY: **SCOTT E. AIBNER** COLORADO REG. NO. 31143

Notes:

- LATITUDE AND LONGITUDE COORDINATES ARE DIFFERENTIALLY CORRECTED AND BASED ON PUBLISHED NGS CONTROL STATION "WDP-5". SYSTEM: UTM ZONE: 13 NORTH DATUM: NAD 1983 (CONUS)
- ELEVATIONS ARE BASED ON NAVD OF 1983.
- ALL BOTTOM AND TOP HOLE LOCATIONS ARE MEASURED 90 DEGREES FROM SECTION LINE.
- USGS QUADRANGLE MAP "SILT".
- CURRENT SURFACE LAND USE: GAS PAD
- PDOP AT THE TIME OF LOCATION OF SURFACE WELL = 2.4



River Valley Survey, Inc.
110 East 3rd. Street, Suite 213
Rifle, Colorado 81650
Ph: 970-379-7846

Project: Dever C PAD

Field Date: 01-19-10

Date: 05-24-12

Scale: 1"= 1500'

Sheet: 1 of 1

Well Location Plat
Prepared For Antero Resources

Situate In:
NW 1/4 Section 17, T.6S., R. 92 W. of the
6th P.M., Garfield County, Colorado

