

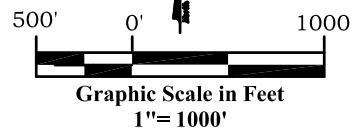
Well Location Plat Dever C2

Section 17, Township 6 South, Range 92 West

Northwest Corner Sec. 17
Garfield County Brass Cap
S 88°47'02" E

North 1/4 Corner Sec.17
Brass Cap L.S. No.15846
S 88°47'21" E

Northeast Corner Sec. 17
Garfield County Brass Cap



Legend

- Field Surveyed Section Corner
- Field Surveyed Quarter Corner
- Calculated Section Corner Location
- Field Surveyed 1/6 Corner

Surface: Dever C2

2048' FNL

115' FWL

Gnd El= 5585.4

Pad El= 5585.0

NAD83

Lat: 39.528218218°N

Long: 107.699573295°W

NAD27

Lat: 39.528237704°N

Long: 107.698956843°W

UTM 13 NORTH

NAD 1983

NORTHING

14366364.368

EASTING

879167.390

Bottom Hole: Dever C2

2441' FSL

1083' FWL

NAD83

Lat: 39.526210419°N

Long: 107.696115497°W

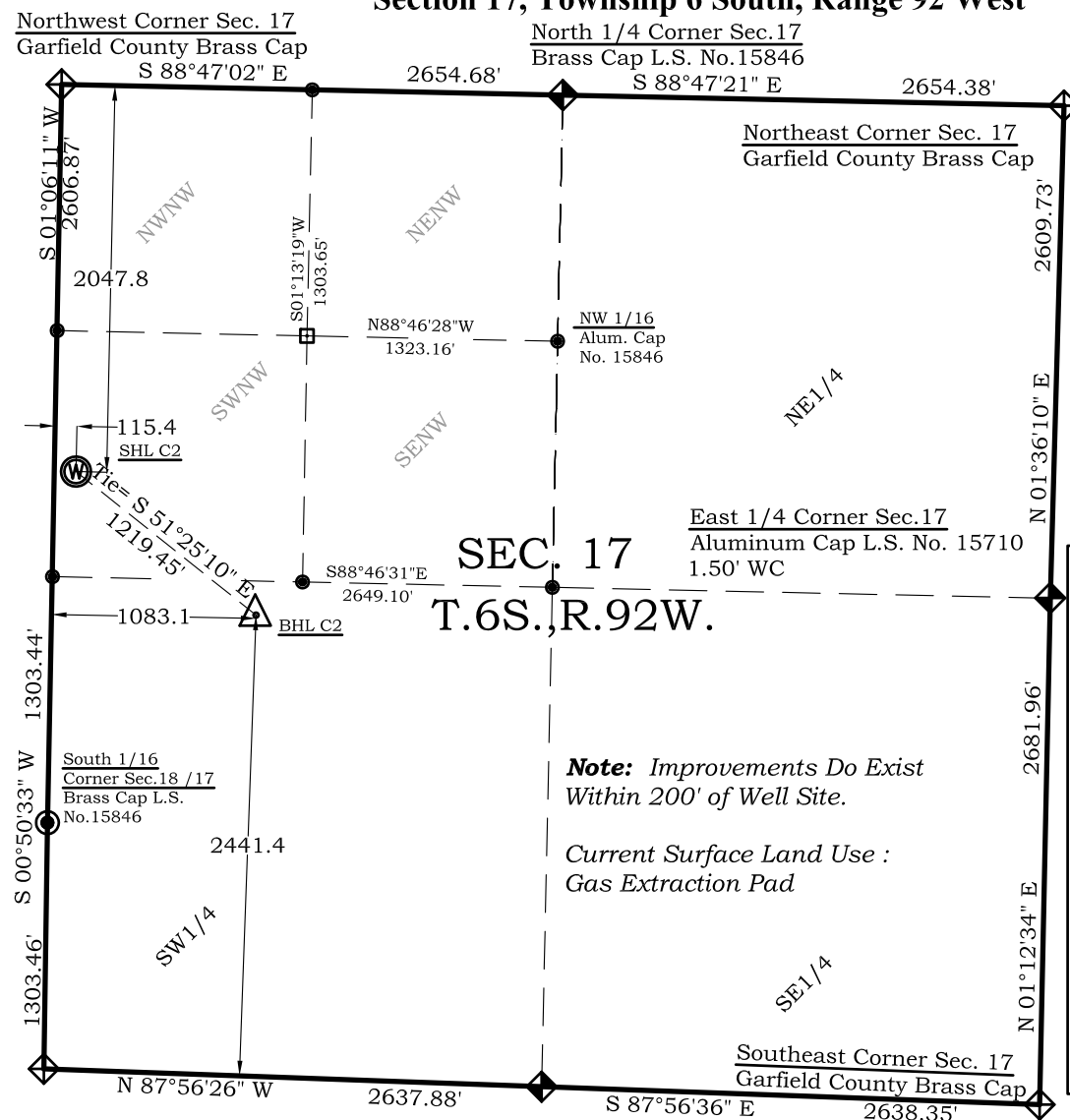
NAD27

Lat: 39.526229901°N

Long: 107.695499200°W

Notes:

- 1.) LATITUDE AND LONGITUDE COORDINATES ARE DIFFERENTIALLY CORRECTED AND BASED ON PUBLISHED NGS CONTROL STATION "WDP-5".
- 2.) ELEVATIONS ARE BASED ON NAVD OF 1929.
- 3.) ALL BOTTOM AND TOP HOLE LOCATIONS ARE MEASURED 90 DEGREES FROM SECTION LINE.
- 4.) USGS QUADRANGLE MAP "SILT CO".
- 5.) CURRENT SURFACE LAND USE: OPEN RANGELAND
- 6.) PDOP AT THE TIME OF LOCATION OF SURFACE WELL = 1.2



SEC. 17
T.6S., R.92W.

Note: Improvements Do Exist
Within 200' of Well Site.

Current Surface Land Use :
Gas Extraction Pad

Southwest Corner Sec.17
Aluminum Cap L.S. No. 31944

South 1/4 Corner Sec.17
Brass Cap L.S. No.15846

Prepared For Antero Resources

Proposed Dever C2 Well Situate in The SW¹/₄NW¹/₄ Section
17, Township 6 South, Range 92 West of the 6 th. Principal
Meridian, County of Garfield, State of Colorado

SURVEYOR'S CERTIFICATE

I, SCOTT E. AIBNER, A REGISTERED LAND SURVEYOR, LICENSED UNDER THE LAWS OF THE STATE OF COLORADO DO HEREBY CERTIFY THAT THE SURVEY SHOWN HEREON WAS PREPARED BY RIVER VALLEY SURVEY, INC., FOR ANTERO RESOURCES, BY ME OR UNDER MY DIRECT SUPERVISION AND THAT THIS PLAT IS A TRUE REPRESENTATION THEREOF.

BY: SCOTT E. AIBNER, COLORADO REG. NO. 31143



River Valley Survey, Inc.
110 East 3rd. Street, Suite 213
Rifle, Colorado 81650
Ph: 970-379-7846

Project: Dever C Pad

File No. 06001-03C

Field Date: 05-17-07

Scale: 1"= 1000'

Date: 06-19-12

Sheet: 1 of 1

Well Location Plat
Prepared For Antero Resources

Situate In:
SW¹/₄NW¹/₄ Section 17, T.6S., R. 92 W.
of the 6th P.M., Garfield County,
Colorado

