

31 July 2012

David Segobia
Sr. Reservoir Engineering Technician, CPT
Gulfport Energy Corporation
14313 N May
Oklahoma City, OK 73134

Mr. Jeff Comstock
Director
Moffatt County Natural Resources Department
221 W. Victory Way, Ste. 130
Craig, CO 81625

RE: Request for Waiver of 20-Day Comment Period (COGCC Rule 305.c), Gulfport Energy Corporation Ridgeview # 32-16-1 Well Location in Moffatt County.

Mr. Comstock,

Gulfport Energy Corporation is seeking a waiver of Colorado Oil and Gas Conservation Commission (COGCC) Rule 305.c (20-day comment period) from you (the Moffatt County Local Government Designee). The Waiver will allow expedited approval for the COGCC Form 2 and Form 2A to subsequently construct, drill, complete, and operate the following proposed well:

NE $\frac{1}{4}$ SW $\frac{1}{4}$, Sec. 16, T06N, R91W, 6th P.M.
Moffatt County, Colorado
Ridgeview #32-16-1
Form 2 Doc: 400308794
Form 2A Doc: 400308846

Situation and COGCC Rule 303.l.(2)

Gulfport is threatened with losing a locally located rig around 20 August 2012. Without a permitted location to continue local operations the rig would be forced to move to another area. Should traditional-term COGCC approvals be pursued Gulfport would need to locate and incur a large sum charge to relocate a distant rig or incur standby fees to have the nearby rig lay idle for approximately 45 days or leave the area for other work. COGCC Rule 303.l.(2) provides for the Director of the COGCC to expedite approval where exigent circumstances would occur, such as significant economic hardships that would result to an operator from drilling standby charges. Expedited Approval under Rule 303.l.(2) results in the Director waiving the requirements under Rules 305 (except Rules 305.c.(4) and 305.e.(6)) and 306.

Rule 305.c Summary

Rule 305.c provides for a 20-day comment period on each Form 2 and Form 2A from the date of posting in accordance with Rule 305.b. This Rule requires the Commission to immediately post to their website, comments received from the public, local government



designee, Colorado Department of Public Health and Environment (CDPHE), or Colorado Parks and Wildlife (CPW) as regards the proposed oil and gas location.

Explanation of Waiver Request

As stated above, Gulfport is threatened with bearing significant costs associated with the release of a rig from a location currently being drilled. Planning for the above referenced location has been on-going and progress at the current location of the rig has been swifter than anticipated. Thus far, Gulfport has acquired a valid lease (No. 2076.12) for the referenced well, has supplied the COGCC with a Form 2 and Form 2A (24 July 2012), and has been in communication with Mr. Tim Kelley, Mr. Lane Osborn and Ms. Beverly Rave with the State of Colorado Board of Land Commissioners.

Faced with these significant costs to wait out traditional-term COGCC approvals, Gulfport is seeking this waiver to receive expedited approvals from the COGCC under Rule 303.l.(2) for Rules 305 (except Rules 305.e.(4) and 305.e.(6)) and 306.

Immediate Action

Upon receipt of expedited approvals, Gulfport intends to immediately construct the well location and associated access for the above referenced well to subsequently commence drilling and completion activities at the site.

Sincerely,

David Segobia
Sr. Reservoir Engineering Technician, CPT
Gulfport Energy Corporation

Landowner/LGD Approval of Waiver Request

Please sign below indicating your waiver of COGCC Rule 305.c for the Gulfport Energy Corporation's Ridgeview #32-16-1 and Sandrock #33-14-1 well locations.

Signature

8-1-2012

Date

Jeff Comstock

Printed Name

Moffat County LCO

Title and Organization

Confirmed Landowners approval 8-1-2012

Enclosures: Location plat, maps, and drawing

**BAKER &
ASSOCIATES**

Engineers * Surveyors

LOCATED IN THE NE1/4SW1/4 OF
SECTION 16, T6N, R91W OF THE
6TH P.M., MOFFAT COUNTY, COLORADO

WELL -
GULFPORT ENERGY CORP.
RIDGEVIEW #32-16-1

1790 W. Victory Way - Craig, Colorado 81625
Telephone (970) 824-3435
FAX (970) 824-3102

SCALE: 1"=1000'



LEGEND

- FOUND MONUMENT
- ⊕ WELL LOCATION
- └ 90° SYMBOL
- ⊙ CALCULATED CORNER
- APPROX. BOTTOM HOLE



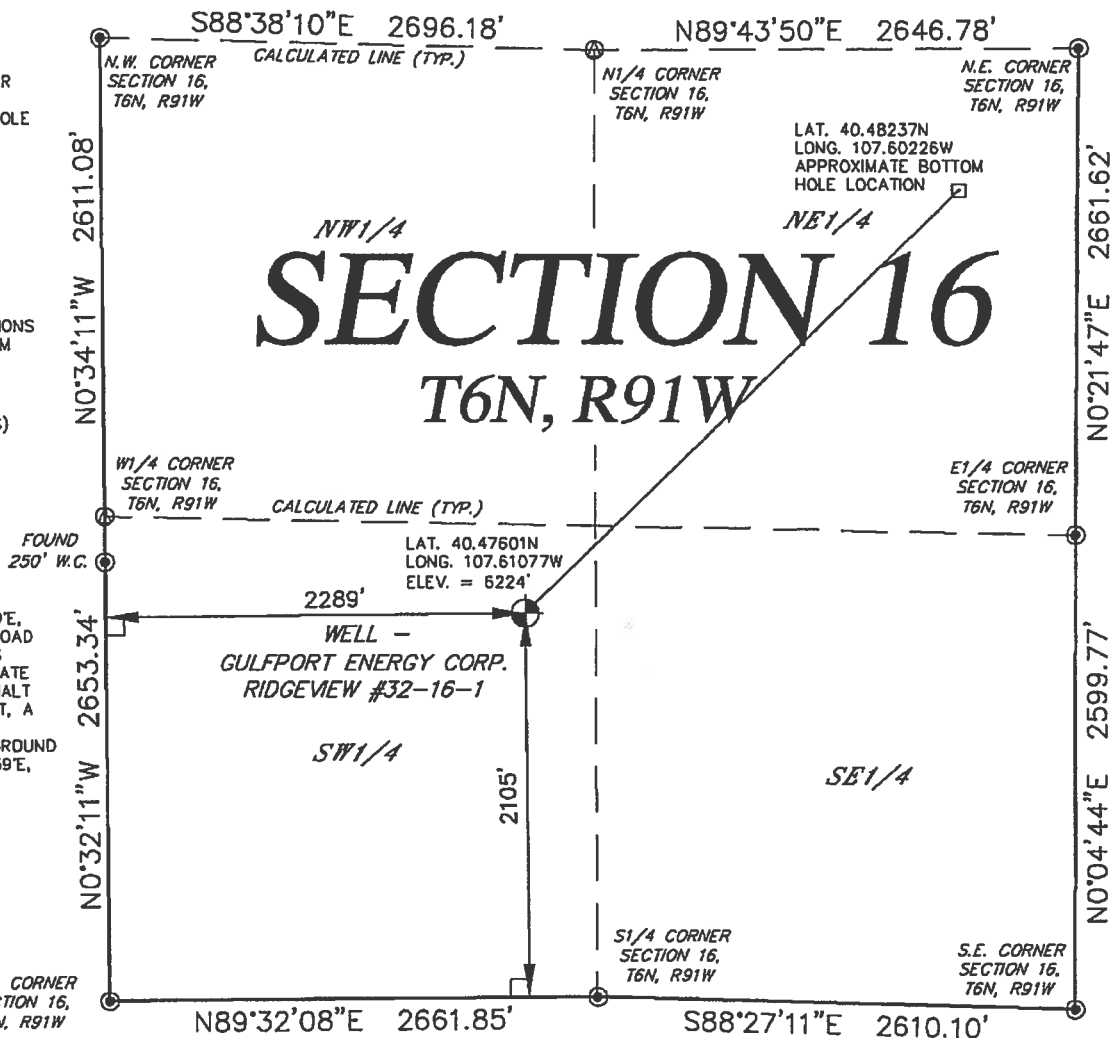
BASIS OF BEARINGS,
DISTANCES AND ELEVATIONS
SHOWN ARE TAKEN FROM
G.P.S. OBSERVATIONS
(NAD 83)(PDOP - 1.3)
(JULY 31, 2012)
(OPERATOR- L. POWERS)

SURFACE USE

AGRICULTURAL
LIVESTOCK GRAZING

IMPROVEMENTS

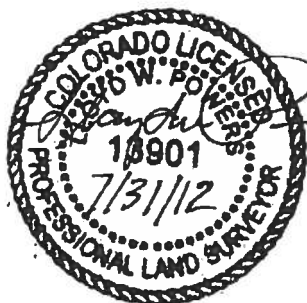
A WATERLINE LIES N39°E,
137± FEET, COUNTY ROAD
NO. 107 ASPHALT LIES
S02°W, 200± FEET, STATE
HIGHWAY NO. 13 ASPHALT
LIES S74°W, 255± FEET, A
WATERLINE LIES N39°E,
143± FEET, A UNDERGROUND
ELECTRIC LINE LIES N39°E,
192± FEET



LAND SURVEYOR'S CERTIFICATE

I, Lloyd W. Powers being a duly registered Professional Land Surveyor do hereby certify that this survey was made by me or under my direct supervision and is based upon my professional knowledge, information and belief and conforms with the applicable standards of practice in the State of Colorado. This certificate does not constitute a guaranty or warranty, either expressed or implied.

Lloyd W. Powers, PLS
Colorado Reg. No. 13901



RECEIVED

AUG 03 2012

COGCC

12038-GEC-R-32-16-1

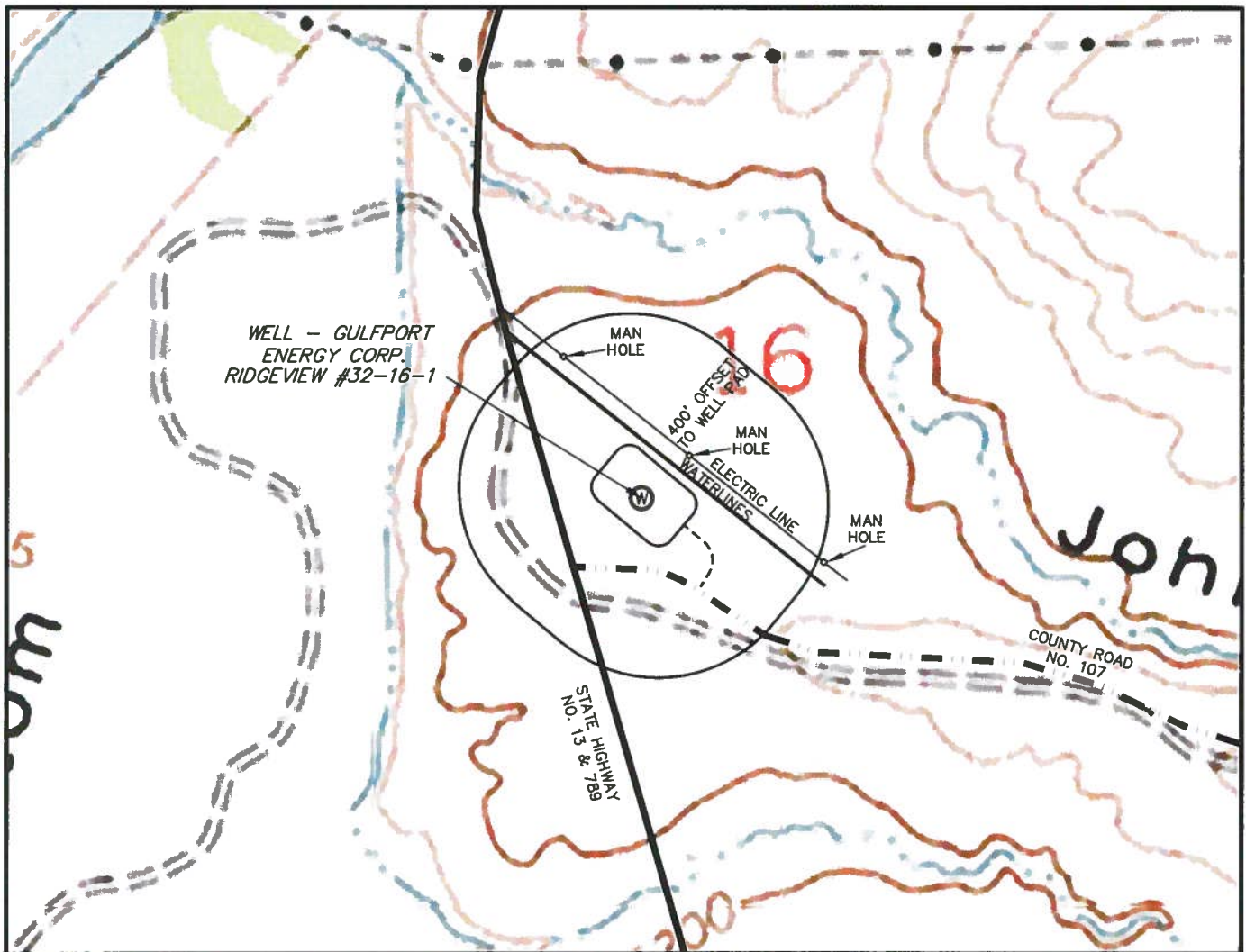
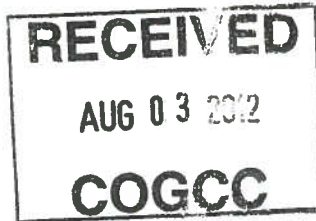
LOCATION DRAWING
WELL – GULFPORT ENERGY CORP.
RIDGEVIEW #32-16-1
LOCATED IN THE NE1/4SW1/4 OF
SECTION 16, T6N, R91W OF THE
6TH P.M., MOFFAT COUNTY, COLORADO

LEGEND

- DENOTES U.S. OR STATE HIGHWAY
- - - - - DENOTES COUNTY ROAD
- - - - - DENOTES EXISTING GRAVEL ROAD
- - - - - DENOTES EXISTING TWO TRACK ROAD
- - - - - DENOTES PROPOSED ACCESS ROAD
- ⊙ DENOTES PROPOSED WELL SITE



SCALE: 1"=500'



12038-R-32-16-1-LD

PLOT PLAN

WELL - GULFPORT ENERGY CORP.
RIDGEVIEW #32-16-1

LOCATED IN THE NE1/4SW1/4
SECTION 16, T6N, R91W OF THE
6TH P.M., MOFFAT COUNTY, COLORADO

SCALE: 1"=60'
DATE: 7/31/12

