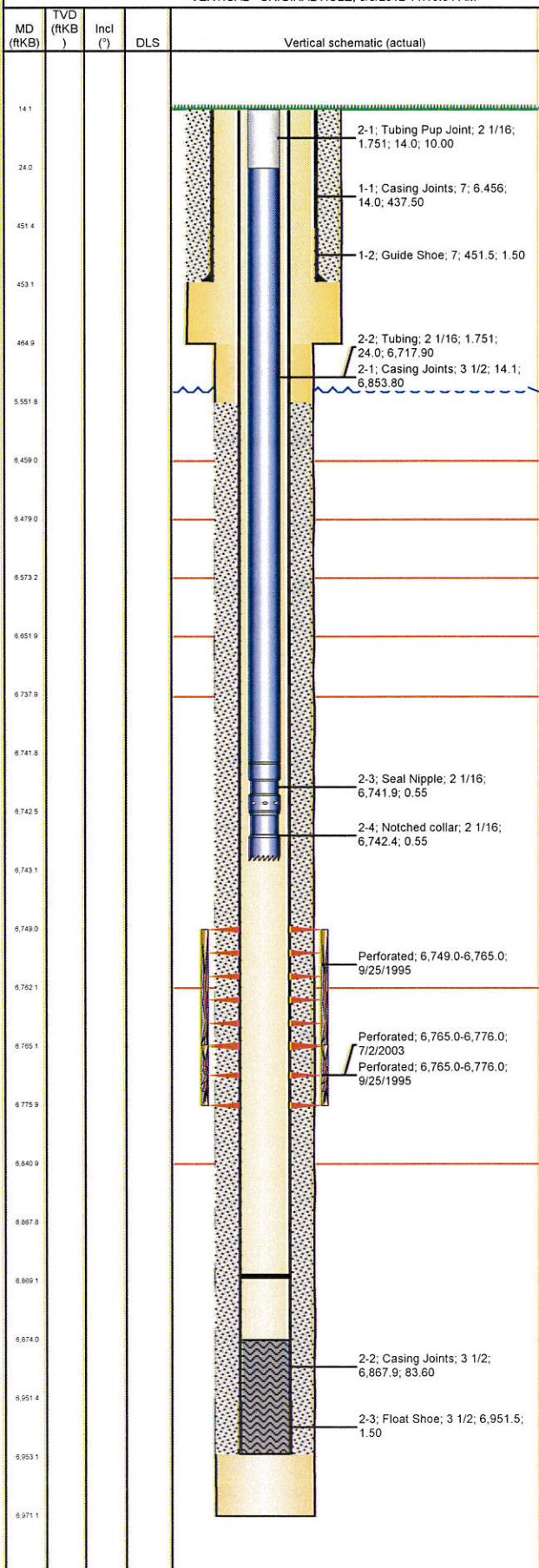


Well Name: UPV 31-02G3

VERTICAL - ORIGINAL HOLE, 8/3/2012 11:19:54 AM



Well Header

API 05-123-18977	Business Unit WATTENBERG	District 15	Well Config VERTICAL
Original KB Elevation (ft) 4,642.00	KB - GL / MSL (ftKB) 14.00	Spud Date 8/14/1995	P & A Date

Comment

Directions To Well

WCR 61 & WCR 64, E 0.7, S 0.1 INTO LOCATION.

Surface Location (Congressional)

Quarter 1	Quarter 2	Quarter 3	Quarter 4	Section	Township	Twnshp...	Range	Rng E/W...
		NW	NE	31	6	N	63	W

Bottom Hole Location

North-South Distance (ft)	From N or S Line	East-West Distance (ft)	From E or W Line
---------------------------	------------------	-------------------------	------------------

Plug Back Total Depths

Date	Depth (ftKB)	Method	Com
8/22/1995	6,877.5	CASING TALLY	LATCH DOWN COLLAR
9/6/1995	6,874.0	CASED HOLE LOG	DEPTH LOGGER
1/23/2008	6,869.0	TAG	TAGGED FILL AT 6869'

Wellbore Sections

Section Des	Size (in)	Act Top (ftKB)	Act Btm (ftKB)
Surface	9 7/8	14.0	465.0
Production	6 1/4	465.0	6,971.0

Zone Statuses

Zone Name	Status Date	Status	Job
FORT HAYS	9/29/1995	PR	DRILLING/COMPLETION - ORIGINAL, 8/14/1995 00:00
CODELL	9/29/1995	PR	DRILLING/COMPLETION - ORIGINAL, 8/14/1995 00:00
CODELL	7/9/2003	PR	RE-FRAC, 6/25/2003 00:00

Casing Strings

Surface Casing, 453.0ftKB

Casing Description	Run Date	OD (in)	Wt/Len (l...)	Grade	Top (ftKB)	Set Depth...
Surface Casing	8/15/1995	7	20.00		14.0	453.0

Production, 6,953.0ftKB

Casing Description	Run Date	OD (in)	Wt/Len (l...)	Grade	Top (ftKB)	Set Depth...
Production	8/21/1995	3 1/2	7.70	M-75	14.1	6,953.0

Cement

Description	Top Depth (ftKB)	Bottom Depth (ftKB)
SURFACE CASING CEMENT	14.0	453.0
Description	Top Depth (ftKB)	Bottom Depth (ftKB)
PRODUCTION CASING CEMENT	5,552.0	6,953.0

Tubing Components

Item Des	OD (in)	Wt (lb/ft)	Grade	Jts	Len (ft)	Btm (ftKB)	Btm (TVD) (ftKB)
Tubing Pup Joint	2 1/16	3.25	J-55	1	10.00	24.0	
Tubing	2 1/16	3.25	J-55	214	6,717.90	6,741.9	
Seal Nipple	2 1/16			1	0.55	6,742.4	
Notched collar	2 1/16			1	0.55	6,743.0	

Perforation Data

Zone	Bnch/St g	Entered Shot Total	Top (ftKB)	Btm (ftKB)	Date
FORT HAYS, ORIGINAL HOLE		32	6,749.0	6,765.0	9/25/1995
CODELL, ORIGINAL HOLE		22	6,765.0	6,776.0	9/25/1995
CODELL, ORIGINAL HOLE		44	6,765.0	6,776.0	7/2/2003

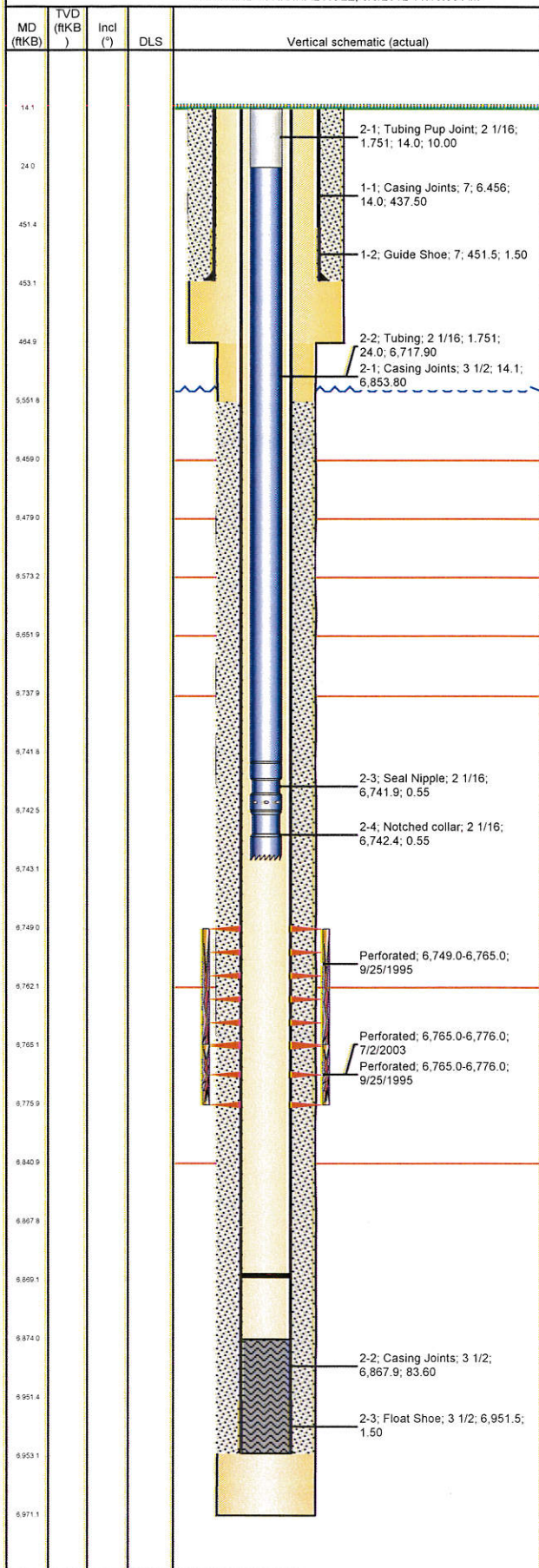
Stimulations & Treatments

Date	Zone	Primary Job Type
9/25/1995	CODELL-FORT HAYS, ORIGINAL HOLE	DRILLING/COMPLETION - ORIGINAL
Technical Result	Tech Result Details	Tech Result Note

Comment

Well Name: UPV 31-02G3

VERTICAL - ORIGINAL HOLE, 8/3/2012 11:19:55 AM



Stimulations & Treatments

Date	7/2/2003	Zone	CODELL, ORIGINAL HOLE		Primary Job Type	RE-FRAC	
Technical Result		Tech Result Details			Tech Result Note		
Comment							
Other In Hole							
Run Date	Des			OD (in)	Top (ftKB)	Btm (ftKB)	
Logs							
Date	Type			Top (ftKB)	Btm (ftKB)		
8/22/1995	Compensated Density			3,500.0	6,937.0		
8/22/1995	Induction			452.0	6,965.0		
9/6/1995	Cement Bond			5,200.0	6,870.0		