

LARAMIE ENERGY II LLC EBUSINESS
1600 LINCOLN ST -DO NOT MAIL
DENVER, Colorado

BCR
BCR 18-01C

Percision 706

Post Job Summary

Cement Production Casing

Prepared for: Kelly Clausson
Date Prepared: 10.07.2010
Version: 1

Service Supervisor: ARNOLD, EDWARD

Submitted by:

HALLIBURTON

The Road to Excellence Starts with Safety

Sold To #: 344919		Ship To #: 2808915		Quote #:		Sales Order #: 7609191	
Customer: LARAMIE ENERGY II LLC EBUSINESS				Customer Rep: Claussen, Kelly			
Well Name: BCR			Well #: 18-01C			API/UWI #: 05-05-18822	
Field: WILD CAT		City (SAP): Rulison		County/Parish: Garfield		State: Colorado	
Lat: N 39.455 deg. OR N 39 deg. 27 min. 17.078 secs.				Long: W 107.805 deg. OR W -108 deg. 11 min. 41.075 secs.			
Contractor: GREYWOLF 706			Rig/Platform Name/Num: GREYWOLF 706				
Job Purpose: Cement Production Casing							
Well Type: Development Well			Job Type: Cement Production Casing				
Sales Person: METLI, MARSHALL			Srvc Supervisor: ARNOLD, EDWARD			MBU ID Emp #: 439784	

Job Personnel

HES Emp Name	Exp Hrs	Emp #	HES Emp Name	Exp Hrs	Emp #	HES Emp Name	Exp Hrs	Emp #
ARNOLD, EDWARD John	9.25	439784	BLUST, CHARLES Thomas	9.25	386662	BROWN, TRAVIS A	9.25	396848
SALAZAR, PAUL Omar	9.25	445614	WEAVER, CARLTON Russell	9.25	457698			

Equipment

HES Unit #	Distance-1 way	HES Unit #	Distance-1 way	HES Unit #	Distance-1 way	HES Unit #	Distance-1 way
10025041	85 mile	10551730C	85 mile	10713294	85 mile	10741119	85 mile
10867094	85 mile	10897925	85 mile	10973571	85 mile	11259881	85 mile
11381461	85 mile						

Job Hours

Date	On Location Hours	Operating Hours	Date	On Location Hours	Operating Hours	Date	On Location Hours	Operating Hours
10.6.2010	4.25	0	10.7.2010	5	4.5			
TOTAL			<i>Total is the sum of each column separately</i>					

Job

Formation Name	Formation Depth (MD)	Top	Bottom	Form Type	Job depth MD	Job Depth TVD	Water Depth	Perforation Depth (MD)	From	To
				BHST	10330. ft	10330. ft				
							Wk Ht Above Floor			
						3. ft				

Job Times

Called Out	Date	Time	Time Zone
On Location	06 - Oct - 2010	15:00	MST
Job Started	06 - Oct - 2010	19:45	MST
Job Completed	07 - Oct - 2010	01:19	MST
Job Completed	07 - Oct - 2010	03:29	MST
Departed Loc	07 - Oct - 2010	05:00	MST

Well Data

Description	New / Used	Max pressure psig	Size in	ID in	Weight lbm/ft	Thread	Grade	Top MD ft	Bottom MD ft	Top TVD ft	Bottom TVD ft
Open Hole				7.875				2560.	10330.		
Production Casing	Unknown		4.5	4.	11.6		I-100	.	10325.		
Surface Pipe	Unknown		8.625	7.921	32.		J-55	.	2560.		

Sales/Rental/3rd Party (HES)

Description	Qty	Qty uom	Depth	Supplier
PLUG,CMTG,TOP,4 1/2,HWE,3.65 MIN/4.14 MA	1	EA		
PORT. DAS W/CEMWIN;ACQUIRE W/HES, ZI	1	JOB		
ADC (AUTO DENSITY CTRL) SYS, /JOB,ZI	1	JOB		

Tools and Accessories

Type	Size	Qty	Make	Depth	Type	Size	Qty	Make	Depth	Type	Size	Qty	Make
Guide Shoe					Packer					Top Plug	4.5	1	HES
Float Shoe					Bridge Plug					Bottom Plug			
Float Collar					Retainer					SSR plug set			
Insert Float										Plug Container	4.5	1	HES
Stage Tool										Centralizers			

Miscellaneous Materials

Gelling Agt		Conc		Surfactant		Conc		Acid Type		Qty		Conc	%
Treatment Fld		Conc		Inhibitor		Conc		Sand Type		Size		Qty	
Fluid Data													
Stage/Plug #: 1													
Fluid #	Stage Type	Fluid Name			Qty	Qty uom	Mixing Density lbm/gal	Yield ft3/sk	Mix Fluid Gal/sk	Rate bbl/min	Total Mix Fluid Gal/sk		
1	Fresh Water Spacer				10.00	bbl	8.33	.0	.0	4			
2	Mud Flush III	MUD FLUSH III - SBM (528788)			20.00	bbl	8.4	.0	.0	4			
3	H2O Spacer				10.00	bbl	8.33	.0	.0	6			
4	Lead Cement	ECONOCEM (TM) SYSTEM (452992)			950.0	sacks	11.	2.4	13.74	7.5	13.74		
13.74 Gal		FRESH WATER											
5	Tail Cement	HALCEM (TM) SYSTEM (452986)			500.0	sacks	13.5	1.48	6.38	7.5	6.38		
6.38 Gal		FRESH WATER											
6	KCL Displacement				159.00	bbl	.	.0	.0	8			
Calculated Values		Pressures			Volumes								
Displacement	159/4	Shut In: Instant			Lost Returns	120	Cement Slurry		544	Pad			
Top Of Cement		5 Min			Cement Returns	0	Actual Displacement		159.4	Treatment			
Frac Gradient		15 Min			Spacers	40	Load and Breakdown			Total Job	744		
Rates													
Circulating	RIG	Mixing			7.5	Displacement	8	Avg. Job		7.5			
Cement Left In Pipe	Amount	41 ft	Reason	Shoe Joint									
Frac Ring # 1 @	ID	Frac ring # 2 @	ID	Frac Ring # 3 @	ID	Frac Ring # 4 @	ID						
The Information Stated Herein Is Correct					Customer Representative Signature								

The Road to Excellence Starts with Safety

Sold To #: 344919	Ship To #: 2808915	Quote #:	Sales Order #: 7609191
Customer: LARAMIE ENERGY II LLC EBUSINESS	Customer Rep: Claussen, Kelly		
Well Name: BCR	Well #: 18-01C	API/UWI #:	05-05-18822
Field: WILD CAT	City (SAP): Rulison	County/Parish: Garfield	State: Colorado
Legal Description:			
Lat: N 39.455 deg. OR N 39 deg. 27 min. 17.078 secs.		Long: W 107.805 deg. OR W -108 deg. 11 min. 41.075 secs.	
Contractor: GREYWOLF 706	Rig/Platform Name/Num: GREYWOLF 706		
Job Purpose: Cement Production Casing	Ticket Amount:		
Well Type: Development Well	Job Type: Cement Production Casing		
Sales Person: METLI, MARSHALL	Srvc Supervisor: ARNOLD, EDWARD	MBU ID Emp #:	439784

Activity Description	Date/Time	Cht #	Rate bbl/min	Volume bbl		Pressure psig		Comments
				Stage	Total	Tubing	Casing	
Call Out	10/06/2010 15:00							
Pre-Convoy Safety Meeting	10/06/2010 16:45							Including entire cement crew.
Crew Leave Yard	10/06/2010 17:00							
Arrive At Loc	10/06/2010 19:45							Rig still running casing Aprox. 60 joints left.
Assessment Of Location Safety Meeting	10/06/2010 19:50							Water Test: PH 7; KCL 0; Fe 0; So4 <200; Chlorides 0; Calcium 120; Temp 68 deg.
Pre-Rig Up Safety Meeting	10/07/2010 00:30							Including entire cement crew.
Rig-Up Equipment	10/07/2010 00:35							1 Elite #2; 1 Field storage bin; 2 660 Bulk Trucks; 1 hard line from pump to floor; 1 hard line from floor to pit; 1 line to upright. 4.5" compact head; # D0953. 2 Water Trucks on location for job with 260 BBL's.
Rig-Up Completed	10/07/2010 00:55							
Pre-Job Safety Meeting	10/07/2010 01:00							Including everyone on location.
Start Job	10/07/2010 01:19							TD 10330; TP 10325; SJ 41; OH 7 7/8; CASING 4.5, 11.6# I-100; SURFACE AT 2560 8 5/8 32#; MUD 9.3 ppg;
Other	10/07/2010 01:20		2	2			21.0	Fill lines.
Activity Description	Date/Time	Cht	Rate bbl/min	Volume bbl		Pressure psig		Comments

Sold To # : 344919 Ship To # :2808915 Quote # : Sales Order # : 7609191

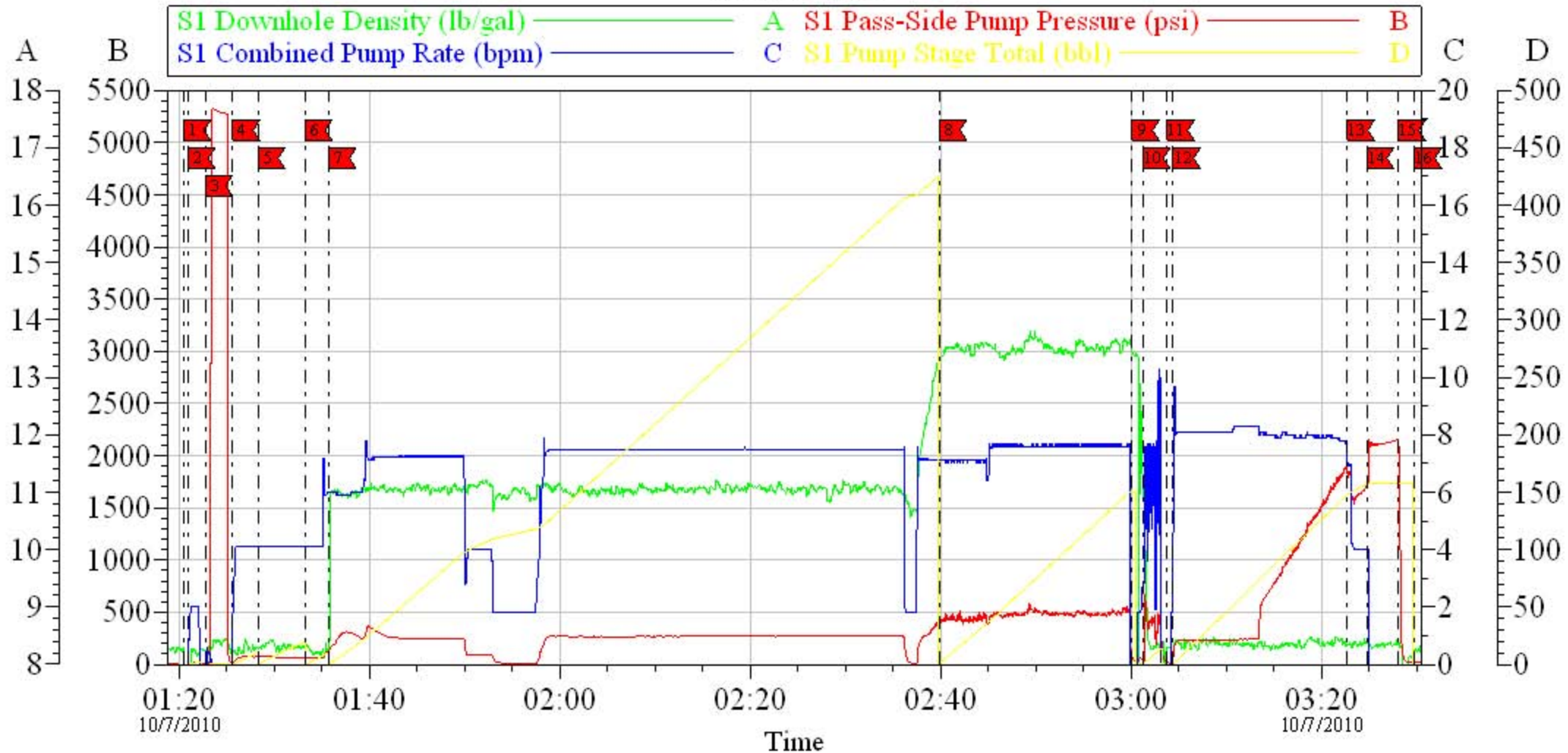
		#		Stage	Total	Tubing	Casing	
Pressure Test	10/07/2010 01:23						5300.0	PSI test good, no leaks.
Pump Spacer 1	10/07/2010 01:25		4	10			70.0	10 BBL fresh water.
Pump Spacer 2	10/07/2010 01:28		4	20			70.0	20 BBL Mud Flush III.
Pump Spacer 1	10/07/2010 01:33		6	10			118.0	10 BBL fresh water.
Pump Lead Cement	10/07/2010 01:35		7	389.1			387.0	950 sks Lead cement, 11.5 ppg; 2.3 cf3; 12.88 gal/sk. Had to slow down during cement, main air hose on bin came apart, had to reroute emergency air to back of bin.
Pump Tail Cement	10/07/2010 02:39		7	154.9			520.0	500 sks Tail cement, 13.5 ppg; 1.74 cf3; 7.6 gal/sk.
Shutdown	10/07/2010 03:00							
Clean Lines	10/07/2010 03:01							Clean pump and lines to pit.
Drop Plug	10/07/2010 03:03							Plug left container.
Pump Displacement	10/07/2010 03:04		7	149.4			1900.0	KCL water; 1sk/ 10 BBL
Slow Rate	10/07/2010 03:22		4	10			1720.0	Slow rate last ten BBLs
Bump Plug	10/07/2010 03:24				159.4		2130.0	Bumped plug took 500 psi over.
Check Floats	10/07/2010 03:28							Floats held. 2 BBL back. Did not Get Cement to Surface.
End Job	10/07/2010 03:29							Good Circulation through Cement. Lost Returns when air on parasite was shut down at 100 BBL of displacement gone.
Pre-Rig Down Safety Meeting	10/07/2010 03:35							Including entire cement crew.
Rig-Down Equipment	10/07/2010 03:45							
Rig-Down Completed	10/07/2010 04:45							
Pre-Convoy Safety Meeting	10/07/2010 04:55							Including entire cement crew.
Crew Leave Location	10/07/2010 05:00							

Activity Description	Date/Time	Cht #	Rate bbl/ min	Volume bbl		Pressure psig		Comments
				Stage	Total	Tubing	Casing	
Other	10/07/2010 05:01							Thank You for using Halliburton. Ed Arnold and crew.

LARAMIE II

4.5" Production

BCR 18-01C



Customer: Laramie II
Well Description: BCR 18-01C
Company Rep: Kelly Claussen

Job Date: 07-Oct-2010
Job Type: 4.5' Production
Cement Supervisor: Ed Arnold

Sales Order #: 7609191
ADC Used: Yes
Elite # 2: Travis Brown

OptiCern v6.4.8
07-Oct-10 03:32