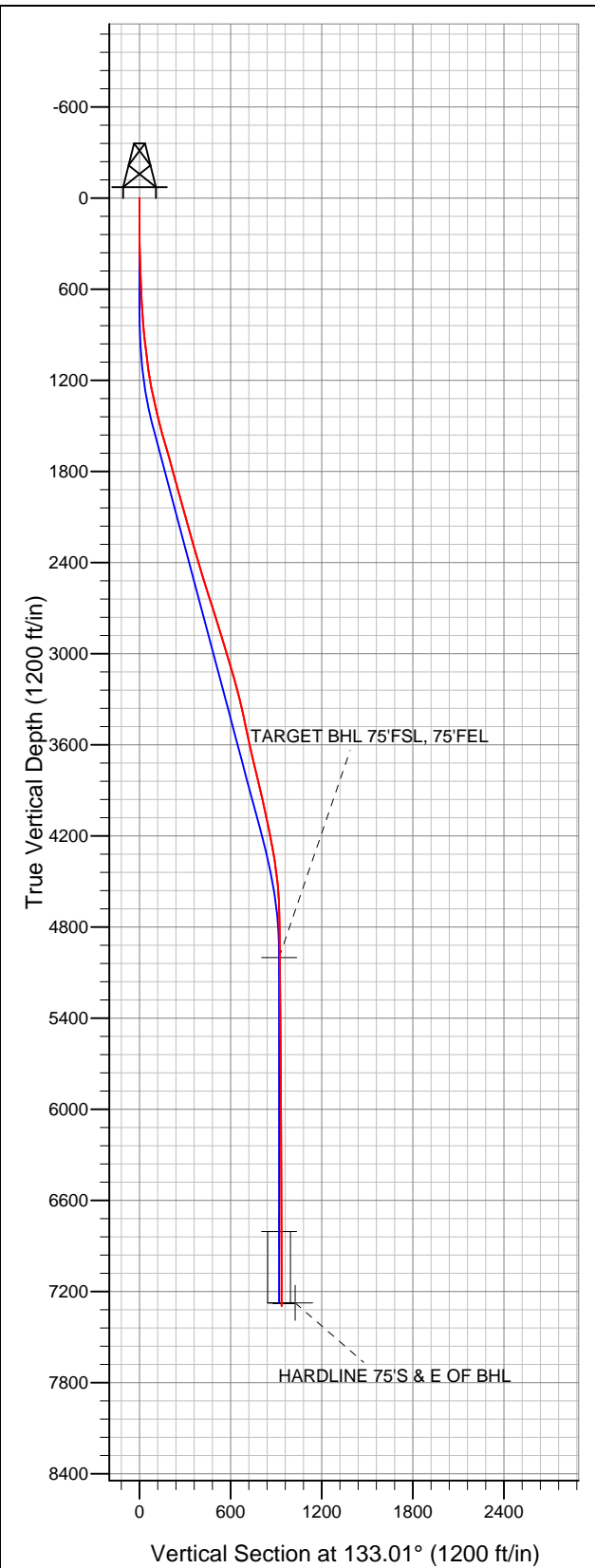


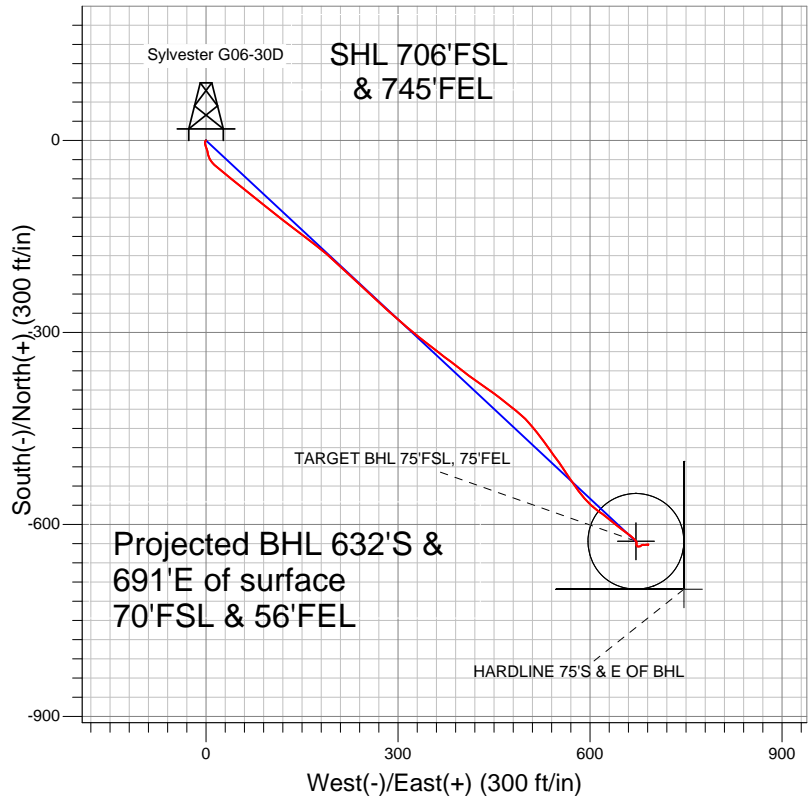
Well Name: Sylvester G06-30D

Surface Location: Sylvester G06-30D Sec.36-T5N-R66W
North American Datum 1983 US State Plane 1983 Colorado Northern Zone
Ground Elevation: 4662.0

+N/-S	+E/-W	Northing	Easting	Latitude	Longitude	Slot
0.0	0.0	1371447.87	3217851.32	40.350390	-104.718360	
		Original Well Elev	WELL @ 4675.0ft (Original Well Elev)			



NOBLE ENERGY INC WELD COUNTY CO



LEGEND

- Survey #1
- ✕ Sylvester G06-30D, Wellbore #1, Noble Sylvester G06-30D Plan #2 (7-26-10) V0
- Wellbore #1

Final Survey Plot

Projected Final Survey -
7410'MD & 7296'TVD @ 936'VS
0.20 deg Inc 200.00 deg AZ

Project: SEC.36-T5N-R66W
Site: Sylvester G06-30D Sec.36-T5N-R66W
Well: Sylvester G06-30D
Plan: Wellbore #1



NOBLE ENERGY INC WELD COUNTY CO

SEC.36-T5N-R66W

Sylvester G06-30D Sec.36-T5N-R66W

Sylvester G06-30D

Wellbore #1

Survey: Survey #1

Standard Survey Report

27 January, 2012



Company:	NOBLE ENERGY INC WELD COUNTY CO	Local Co-ordinate Reference:	Well Sylvester G06-30D
Project:	SEC.36-T5N-R66W	TVD Reference:	WELL @ 4675.0ft (Original Well Elev)
Site:	Sylvester G06-30D Sec.36-T5N-R66W	MD Reference:	WELL @ 4675.0ft (Original Well Elev)
Well:	Sylvester G06-30D	North Reference:	True
Wellbore:	Wellbore #1	Survey Calculation Method:	Minimum Curvature
Design:	Wellbore #1	Database:	Landmark

Project	SEC.36-T5N-R66W, Weld County, Colorado		
Map System:	US State Plane 1983	System Datum:	Mean Sea Level
Geo Datum:	North American Datum 1983		Using Well Reference Point
Map Zone:	Colorado Northern Zone		Using geodetic scale factor

Site	Sylvester G06-30D Sec.36-T5N-R66W		
Site Position:		Northing:	1,371,447.87 ft
From:	Lat/Long	Easting:	3,217,851.32 ft
Position Uncertainty:	0.0 ft	Slot Radius:	"
		Latitude:	40.350390
		Longitude:	-104.718360
		Grid Convergence:	0.51 °

Well	Sylvester G06-30D		
Well Position	+N/-S	0.0 ft	Northing: 1,371,447.87 ft
	+E/-W	0.0 ft	Easting: 3,217,851.32 ft
Position Uncertainty	0.0 ft	Wellhead Elevation:	ft
		Latitude:	40.350390
		Longitude:	-104.718360
		Ground Level:	4,662.0 ft

Wellbore	Wellbore #1				
Magnetics	Model Name	Sample Date	Declination (°)	Dip Angle (°)	Field Strength (nT)
	IGRF2010	1/6/2012	8.76	67.00	53,053

Design	Wellbore #1				
Audit Notes:					
Version:	1.0	Phase:	ACTUAL	Tie On Depth:	0.0
Vertical Section:	Depth From (TVD) (ft)	+N/-S (ft)	+E/-W (ft)	Direction (°)	
	0.0	0.0	0.0	133.01	

Survey Program	Date	1/27/2012			
From (ft)	To (ft)	Survey (Wellbore)	Tool Name	Description	
137.0	7,410.0	Survey #1 (Wellbore #1)	MWD	MWD - Standard	

Survey										
Measured Depth (ft)	Inclination (°)	Azimuth (°)	Vertical Depth (ft)	+N/-S (ft)	+E/-W (ft)	Vertical Section (ft)	Dogleg Rate (°/100ft)	Build Rate (°/100ft)	Turn Rate (°/100ft)	
0.0	0.00	0.00	0.0	0.0	0.0	0.0	0.00	0.00	0.00	
137.0	0.60	213.90	137.0	-0.6	-0.4	0.1	0.44	0.44	0.00	
229.0	0.60	244.80	229.0	-1.2	-1.1	0.0	0.35	0.00	33.59	
321.0	1.80	187.00	321.0	-2.8	-1.7	0.7	1.70	1.30	-62.83	
414.0	2.00	167.10	413.9	-5.9	-1.5	2.9	0.74	0.22	-21.40	
505.0	2.50	163.10	504.9	-9.3	-0.6	5.9	0.58	0.55	-4.40	
607.0	3.00	156.40	606.7	-13.9	1.1	10.3	0.58	0.49	-6.57	
616.0	3.00	158.00	615.7	-14.3	1.3	10.7	0.93	0.00	17.78	
665.0	3.80	168.40	664.6	-17.1	2.1	13.2	2.06	1.63	21.22	
747.0	3.90	167.80	746.5	-22.5	3.2	17.7	0.13	0.12	-0.73	
828.0	5.30	153.10	827.2	-28.5	5.5	23.5	2.25	1.73	-18.15	
910.0	6.00	141.30	908.8	-35.2	9.9	31.3	1.65	0.85	-14.39	
992.0	6.50	129.70	990.3	-41.6	16.2	40.2	1.65	0.61	-14.15	

Company:	NOBLE ENERGY INC WELD COUNTY CO	Local Co-ordinate Reference:	Well Sylvester G06-30D
Project:	SEC.36-T5N-R66W	TVD Reference:	WELL @ 4675.0ft (Original Well Elev)
Site:	Sylvester G06-30D Sec.36-T5N-R66W	MD Reference:	WELL @ 4675.0ft (Original Well Elev)
Well:	Sylvester G06-30D	North Reference:	True
Wellbore:	Wellbore #1	Survey Calculation Method:	Minimum Curvature
Design:	Wellbore #1	Database:	Landmark

Survey

Measured Depth (ft)	Inclination (°)	Azimuth (°)	Vertical Depth (ft)	+N/-S (ft)	+E/-W (ft)	Vertical Section (ft)	Dogleg Rate (°/100ft)	Build Rate (°/100ft)	Turn Rate (°/100ft)
1,074.0	7.00	126.50	1,071.7	-47.5	23.7	49.8	0.76	0.61	-3.90
1,155.0	8.90	129.20	1,152.0	-54.4	32.6	60.9	2.39	2.35	3.33
1,237.0	10.70	129.50	1,232.8	-63.2	43.4	74.8	2.20	2.20	0.37
1,319.0	12.40	128.30	1,313.1	-73.5	56.1	91.2	2.09	2.07	-1.46
1,401.0	13.20	128.80	1,393.1	-84.9	70.4	109.3	0.98	0.98	0.61
1,482.0	13.30	129.00	1,471.9	-96.5	84.8	127.8	0.14	0.12	0.25
1,564.0	15.70	128.80	1,551.3	-109.4	100.8	148.3	2.93	2.93	-0.24
1,646.0	16.40	127.90	1,630.1	-123.5	118.6	170.9	0.91	0.85	-1.10
1,728.0	16.20	126.70	1,708.8	-137.4	136.9	193.8	0.48	-0.24	-1.46
1,809.0	15.60	128.10	1,786.7	-150.9	154.5	215.9	0.88	-0.74	1.73
1,891.0	15.60	127.60	1,865.7	-164.4	171.9	237.9	0.16	0.00	-0.61
1,973.0	15.10	130.20	1,944.7	-178.0	188.8	259.5	1.04	-0.61	3.17
2,055.0	16.00	133.60	2,023.7	-192.7	205.1	281.5	1.56	1.10	4.15
2,136.0	15.30	133.40	2,101.7	-207.8	221.0	303.3	0.87	-0.86	-0.25
2,218.0	15.30	132.70	2,180.8	-222.5	236.8	325.0	0.23	0.00	-0.85
2,300.0	16.00	132.00	2,259.8	-237.4	253.2	347.1	0.88	0.85	-0.85
2,382.0	16.40	132.70	2,338.5	-252.9	270.1	370.0	0.54	0.49	0.85
2,463.0	16.50	132.70	2,416.2	-268.4	286.9	392.9	0.12	0.12	0.00
2,545.0	17.00	130.00	2,494.7	-284.0	304.7	416.5	1.13	0.61	-3.29
2,627.0	17.50	129.50	2,573.1	-299.6	323.4	440.8	0.64	0.61	-0.61
2,709.0	17.90	128.40	2,651.2	-315.2	342.7	465.7	0.64	0.49	-1.34
2,790.0	18.10	127.90	2,728.2	-330.7	362.4	490.6	0.31	0.25	-0.62
2,872.0	17.20	126.40	2,806.4	-345.7	382.2	515.3	1.23	-1.10	-1.83
2,954.0	16.80	128.50	2,884.8	-360.3	401.3	539.2	0.89	-0.49	2.56
3,035.0	17.00	124.80	2,962.3	-374.3	420.2	562.6	1.35	0.25	-4.57
3,117.0	17.30	125.50	3,040.6	-388.3	439.9	586.5	0.44	0.37	0.85
3,199.0	16.40	128.10	3,119.1	-402.5	459.0	610.1	1.43	-1.10	3.17
3,281.0	14.70	128.10	3,198.1	-416.0	476.3	632.0	2.07	-2.07	0.00
3,362.0	13.90	130.90	3,276.6	-428.8	491.7	652.0	1.31	-0.99	3.46
3,444.0	13.30	138.70	3,356.3	-442.3	505.4	671.2	2.35	-0.73	9.51
3,526.0	12.40	142.40	3,436.2	-456.3	517.0	689.3	1.49	-1.10	4.51
3,608.0	12.10	143.60	3,516.4	-470.2	527.4	706.4	0.48	-0.37	1.46
3,689.0	12.60	143.90	3,595.5	-484.2	537.7	723.5	0.62	0.62	0.37
3,771.0	13.80	145.50	3,675.3	-499.5	548.5	741.8	1.53	1.46	1.95
3,853.0	13.70	144.60	3,755.0	-515.5	559.7	760.9	0.29	-0.12	-1.10
3,935.0	14.00	145.70	3,834.6	-531.6	570.9	780.0	0.49	0.37	1.34
4,016.0	13.40	144.50	3,913.3	-547.3	581.8	798.8	0.82	-0.74	-1.48
4,098.0	12.30	139.20	3,993.2	-561.7	593.1	816.8	1.96	-1.34	-6.46
4,180.0	12.20	126.40	4,073.4	-573.4	605.8	834.1	3.31	-0.12	-15.61
4,262.0	11.60	127.90	4,153.6	-583.6	619.2	850.9	0.82	-0.73	1.83
4,343.0	10.70	128.80	4,233.1	-593.3	631.5	866.5	1.13	-1.11	1.11
4,425.0	10.40	128.80	4,313.7	-602.8	643.2	881.5	0.37	-0.37	0.00
4,507.0	7.70	124.80	4,394.7	-610.5	653.5	894.3	3.38	-3.29	-4.88
4,589.0	7.10	129.50	4,476.0	-616.9	661.9	904.8	1.04	-0.73	5.73
4,670.0	4.40	131.50	4,556.6	-622.1	668.1	912.9	3.34	-3.33	2.47
4,752.0	3.00	147.50	4,638.4	-626.0	671.6	918.1	2.11	-1.71	19.51
4,834.0	1.10	184.40	4,720.4	-628.6	672.7	920.7	2.71	-2.32	45.00
4,915.0	1.10	192.10	4,801.4	-630.2	672.5	921.6	0.18	0.00	9.51
4,997.0	0.80	177.50	4,883.3	-631.5	672.4	922.4	0.47	-0.37	-17.80
5,079.0	0.70	164.50	4,965.3	-632.5	672.5	923.2	0.24	-0.12	-15.85
5,113.6	0.72	152.61	4,999.9	-632.9	672.7	923.6	0.43	0.07	-34.38
TARGET BHL 75'FSL, 75'FEL									
5,161.0	0.80	138.30	5,047.3	-633.5	673.0	924.2	0.43	0.16	-30.18
5,242.0	0.80	117.40	5,128.3	-634.1	673.9	925.3	0.36	0.00	-25.80

Company:	NOBLE ENERGY INC WELD COUNTY CO	Local Co-ordinate Reference:	Well Sylvester G06-30D
Project:	SEC.36-T5N-R66W	TVD Reference:	WELL @ 4675.0ft (Original Well Elev)
Site:	Sylvester G06-30D Sec.36-T5N-R66W	MD Reference:	WELL @ 4675.0ft (Original Well Elev)
Well:	Sylvester G06-30D	North Reference:	True
Wellbore:	Wellbore #1	Survey Calculation Method:	Minimum Curvature
Design:	Wellbore #1	Database:	Landmark

Survey									
Measured Depth (ft)	Inclination (°)	Azimuth (°)	Vertical Depth (ft)	+N/-S (ft)	+E/-W (ft)	Vertical Section (ft)	Dogleg Rate (°/100ft)	Build Rate (°/100ft)	Turn Rate (°/100ft)
5,324.0	0.90	102.30	5,210.3	-634.5	675.0	926.5	0.30	0.12	-18.41
5,406.0	0.90	75.20	5,292.3	-634.5	676.3	927.3	0.51	0.00	-33.05
5,488.0	0.70	95.60	5,374.3	-634.4	677.4	928.1	0.42	-0.24	24.88
5,569.0	0.80	67.80	5,455.3	-634.2	678.4	928.7	0.46	0.12	-34.32
5,651.0	0.80	38.10	5,537.3	-633.6	679.3	928.9	0.50	0.00	-36.22
5,733.0	0.80	61.10	5,619.3	-632.8	680.2	929.0	0.39	0.00	28.05
5,815.0	0.40	68.00	5,701.3	-632.5	680.9	929.3	0.49	-0.49	8.41
5,896.0	0.50	82.60	5,782.3	-632.3	681.5	929.7	0.19	0.12	18.02
5,978.0	0.40	67.50	5,864.3	-632.1	682.2	930.0	0.19	-0.12	-18.41
6,060.0	0.60	84.50	5,946.3	-632.0	682.9	930.4	0.30	0.24	20.73
6,142.0	0.40	104.70	6,028.3	-632.0	683.6	931.0	0.32	-0.24	24.63
6,223.0	0.60	95.80	6,109.3	-632.1	684.3	931.6	0.26	0.25	-10.99
6,305.0	0.50	85.40	6,191.3	-632.2	685.0	932.1	0.17	-0.12	-12.68
6,387.0	0.60	88.90	6,273.2	-632.1	685.8	932.7	0.13	0.12	4.27
6,469.0	0.40	107.00	6,355.2	-632.2	686.5	933.3	0.31	-0.24	22.07
6,550.0	0.40	49.00	6,436.2	-632.1	687.0	933.5	0.48	0.00	-71.61
6,632.0	0.60	91.40	6,518.2	-631.9	687.7	933.9	0.50	0.24	51.71
6,714.0	0.40	40.90	6,600.2	-631.7	688.3	934.2	0.57	-0.24	-61.59
6,795.0	0.40	97.50	6,681.2	-631.5	688.7	934.4	0.47	0.00	69.88
6,877.0	0.10	45.30	6,763.2	-631.5	689.1	934.7	0.42	-0.37	-63.66
6,918.7	0.23	91.21	6,804.9	-631.5	689.2	934.7	0.43	0.32	110.10
TARGET CIRCLE 75'FSL, 75'FEL									
6,959.0	0.40	101.20	6,845.2	-631.5	689.4	934.9	0.43	0.41	24.80
7,041.0	0.20	161.50	6,927.2	-631.7	689.7	935.3	0.42	-0.24	73.54
7,122.0	0.40	69.20	7,008.2	-631.8	690.0	935.5	0.56	0.25	-113.95
7,204.0	0.40	95.60	7,090.2	-631.7	690.6	935.9	0.22	0.00	32.20
7,286.0	0.10	338.30	7,172.2	-631.6	690.9	936.0	0.55	-0.37	-143.05
7,359.0	0.20	237.10	7,245.2	-631.7	690.7	935.9	0.33	0.14	-138.63
7,388.8	0.19	215.28	7,275.1	-631.7	690.7	935.9	0.25	-0.03	-73.12
HARDLINE 75'S & E OF BHL									
7,410.0	0.20	200.00	7,296.2	-631.8	690.6	936.0	0.25	0.05	-72.22

Checked By: _____ Approved By: _____ Date: _____