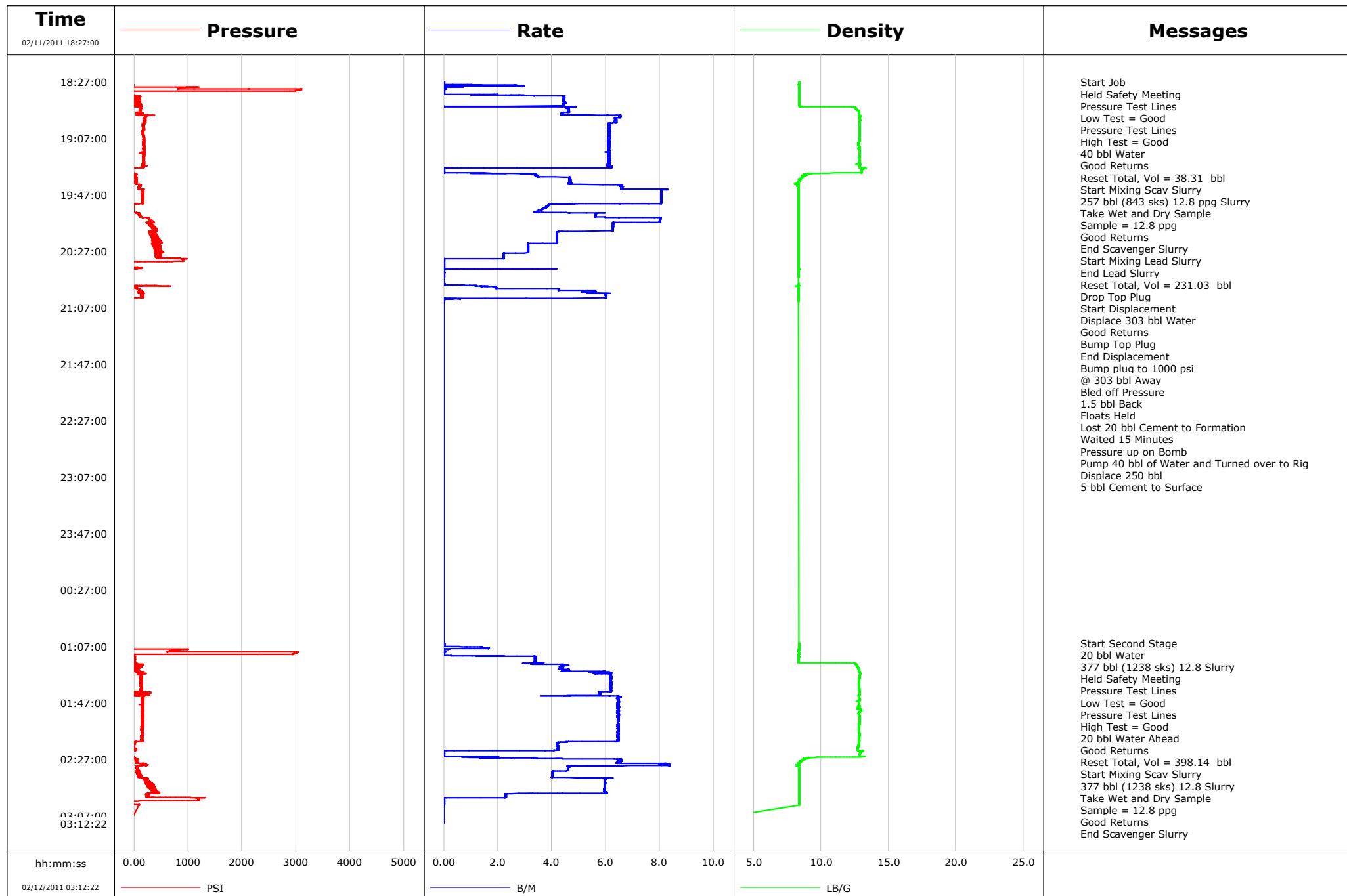


**Well** RG 334-24-198  
**Field** Ryan Gulch  
**Engineer** Tom Leduc  
**Country** United States

**Client** Williams  
**SIR No.**  
**Job Type** 9 5/8" 2-Stage Surface  
**Job Date** 02-11-2011



Page 1 of 5

Well RG 334-24-198 RGU 334-24-198			Field Ryan Gulch		Job Start Feb/11/2011	Customer Williams	Job Number
Date	Time 24-hr clock	Treating Pressure PSI	Flow Rate B/M	Density LB/G	Volume BBL	Message	
02/11/2011	18:45:20	127	4.6	12.51	40.3		
02/11/2011	18:45:34	114	4.6	12.54	41.4	End Scavenger Slurry	
02/11/2011	18:45:35	114	4.6	12.54	41.5	Start Mixing Lead Slurry	
02/11/2011	18:47:00	115	4.6	12.69	48.0		
02/11/2011	18:48:40	146	4.5	12.80	55.7		
02/11/2011	18:50:20	59	4.4	12.80	63.0		
02/11/2011	18:52:00	213	6.5	12.85	73.3		
02/11/2011	18:53:40	196	6.3	12.85	84.0		
02/11/2011	18:55:20	202	6.3	12.83	94.6		
02/11/2011	18:57:00	180	6.1	12.86	105.0		
02/11/2011	18:58:40	176	6.2	12.82	115.2		
02/11/2011	19:00:20	170	6.1	12.87	125.4		
02/11/2011	19:02:00	161	6.1	12.83	135.6		
02/11/2011	19:03:40	169	6.1	12.86	145.8		
02/11/2011	19:05:20	167	6.1	12.84	156.0		
02/11/2011	19:07:00	182	6.1	12.83	166.2		
02/11/2011	19:08:40	174	6.1	12.82	176.4		
02/11/2011	19:10:20	183	6.1	12.78	186.6		
02/11/2011	19:12:00	188	6.1	12.77	196.8		
02/11/2011	19:13:40	177	6.1	12.85	207.0		
02/11/2011	19:15:20	183	6.1	12.86	217.1		
02/11/2011	19:17:00	182	6.1	12.87	227.3		
02/11/2011	19:18:40	181	6.1	12.85	237.5		
02/11/2011	19:20:20	178	6.1	12.82	247.7		
02/11/2011	19:22:00	180	6.1	12.82	257.8		
02/11/2011	19:23:40	180	6.1	12.81	268.0		
02/11/2011	19:23:49	184	6.1	12.81	268.9	End Lead Slurry	
02/11/2011	19:23:53	167	6.1	12.81	269.3	Reset Total, Vol = 231.03 bbl	
02/11/2011	19:23:54	167	6.1	12.81	269.4	Drop Top Plug	
02/11/2011	19:23:56	178	6.1	12.81	269.7	Start Displacement	
02/11/2011	19:23:57	167	6.1	12.81	269.8	Displace 303 bbl Water	
02/11/2011	19:25:20	168	6.1	12.88	278.2		
02/11/2011	19:27:00	154	6.2	12.82	288.4		
02/11/2011	19:28:40	-64	0.0	13.10	293.9		
02/11/2011	19:30:20	-62	0.0	12.97	293.9		
02/11/2011	19:32:00	5	2.6	9.28	294.6		
02/11/2011	19:33:40	-1	3.5	8.78	300.2		
02/11/2011	19:35:20	28	4.6	8.54	307.0		
02/11/2011	19:37:00	18	4.7	8.39	314.8		
02/11/2011	19:38:40	38	4.7	8.33	322.6		
02/11/2011	19:40:20	92	6.5	8.28	331.5		
02/11/2011	19:42:00	87	6.6	8.34	342.4		
02/11/2011	19:43:40	154	8.0	8.34	354.1		
02/11/2011	19:45:20	161	8.0	8.34	367.5		
02/11/2011	19:47:00	160	8.0	8.35	380.9		
02/11/2011	19:48:40	166	8.0	8.34	394.3		
02/11/2011	19:50:20	165	8.0	8.34	407.7		
02/11/2011	19:52:00	165	8.0	8.34	421.0		
02/11/2011	19:53:40	-1	4.0	8.34	433.3		
02/11/2011	19:55:20	-14	3.8	8.34	439.7		
02/11/2011	19:57:00	-13	3.7	8.34	446.0		
02/11/2011	19:58:40	-12	3.5	8.34	451.9		
02/11/2011	20:00:20	90	5.6	8.34	458.7		
02/11/2011	20:02:00	100	5.6	8.34	468.1		

Well RG 334-24-198 RGU 334-24-198			Field Ryan Gulch		Job Start Feb/11/2011		Customer Williams		Job Number	
Date	Time 24-hr clock	Treating Pressure PSI		Flow Rate B/M	Density LB/G		Volume BBL		Message	
02/11/2011	20:05:20	326		8.0	8.34		492.3			
02/11/2011	20:07:00	302		6.3	8.34		504.9			
02/11/2011	20:08:40	295		6.3	8.34		515.3			
02/11/2011	20:10:20	353		6.3	8.34		525.7			
02/11/2011	20:12:00	398		6.3	8.34		536.2			
02/11/2011	20:13:40	300		4.2	8.34		544.8			
02/11/2011	20:15:20	338		4.2	8.34		551.8			
02/11/2011	20:17:00	388		4.2	8.33		558.8			
02/11/2011	20:18:40	470		4.2	8.33		565.7			
02/11/2011	20:20:20	427		4.2	8.33		572.7			
02/11/2011	20:22:00	350		3.1	8.33		578.9			
02/11/2011	20:23:40	374		3.1	8.34		584.1			
02/11/2011	20:25:20	377		3.1	8.34		589.3			
02/11/2011	20:27:00	449		3.1	8.34		594.5			
02/11/2011	20:28:40	426		2.2	8.34		599.3			
02/11/2011	20:30:20	454		2.2	8.34		603.0			
02/11/2011	20:32:00	659		2.2	8.34		606.7			
02/11/2011	20:33:40	910		0.0	8.34		607.1			
02/11/2011	20:35:18	-79		0.0	8.34		607.1		Bump Top Plug	
02/11/2011	20:35:19	-79		0.0	8.34		607.1		End Displacement	
02/11/2011	20:35:20	-79		0.0	8.34		607.1			
02/11/2011	20:35:21	-80		0.0	8.34		607.1		Bump plug to 1000 psi	
02/11/2011	20:35:22	-79		0.0	8.34		607.1		Floats Held	
02/11/2011	20:37:00	-80		0.0	8.34		607.1			
02/11/2011	20:38:40	32		0.0	8.34		607.2			
02/11/2011	20:40:20	-79		0.0	8.35		607.9			
02/11/2011	20:42:00	-83		0.0	8.35		607.9			
02/11/2011	20:43:40	-82		0.0	8.35		607.9			
02/11/2011	20:45:20	-81		0.0	8.35		607.9			
02/11/2011	20:49:53	-80		0.0	8.35		607.9		Waited 15 Minutes	
02/11/2011	20:49:54	-81		0.0	8.35		607.9		Pressure up on Bomb	
02/11/2011	20:50:20	-81		0.0	8.35		607.9			
02/11/2011	20:52:00	49		1.6	8.32		609.2			
02/11/2011	20:53:40	102		2.6	8.34		612.4			
02/11/2011	20:55:20	141		5.6	8.34		619.6			
02/11/2011	20:57:00	148		6.2	8.34		628.9			
02/11/2011	20:58:40	143		6.0	8.34		638.9			
02/11/2011	21:00:20	3		0.1	8.34		648.5			
02/11/2011	21:02:00	-83		0.0	8.34		648.7			
02/11/2011	21:02:35	-83		0.0	8.34		648.7		5 bbl Cement to Surface	
02/12/2011	01:04:40	-137		0.0	8.37		648.7		Start Second Stage	
02/12/2011	01:04:41	-138		0.0	8.37		648.7		20 bbl Water	
02/12/2011	01:04:43	-138		0.0	8.37		648.7		Held Safety Meeting	
02/12/2011	01:04:45	-138		0.0	8.37		648.7		Pressure Test Lines	
02/12/2011	01:04:46	-138		0.0	8.37		648.7		Low Test = Good	
02/12/2011	01:04:47	-138		0.0	8.37		648.7		Pressure Test Lines	
02/12/2011	01:04:49	-138		0.0	8.37		648.7		High Test = Good	
02/12/2011	01:04:50	-137		0.0	8.37		648.7		20 bbl Water Ahead	
02/12/2011	01:04:52	-138		0.0	8.37		648.7		Good Returns	
02/12/2011	01:05:20	-138		0.0	8.37		648.8			
02/12/2011	01:07:00	-138		0.0	8.37		648.8			
02/12/2011	01:08:40	-98		0.3	8.35		650.8			
02/12/2011	01:10:20	660		0.0	8.35		650.8			
02/12/2011	01:12:00	2967		0.0	8.35		650.9			

Well RG 334-24-198 RGU 334-24-198			Field Ryan Gulch		Job Start Feb/11/2011	Customer Williams	Job Number
Date	Time 24-hr clock	Treating Pressure PSI	Flow Rate B/M	Density LB/G	Volume BBL	Message	
02/12/2011	01:15:20	-11	3.4	8.35	655.9		
02/12/2011	01:17:00	-9	3.4	8.35	661.6		
02/12/2011	01:18:40	-10	3.5	8.33	667.2		
02/12/2011	01:18:45	-2	3.6	11.08	667.5	Reset Total, Vol = 398.14 bbl	
02/12/2011	01:18:47	-23	3.5	11.85	667.6	Start Mixing Scav Slurry	
02/12/2011	01:18:49	-20	3.5	12.35	667.7	377 bbl (1238 sks) 12.8 Slurry	
02/12/2011	01:18:50	-24	3.4	12.45	667.8	Take Wet and Dry Sample	
02/12/2011	01:20:00	150	4.4	12.60	672.0	End Scavenger Slurry	
02/12/2011	01:20:02	47	4.4	12.60	672.2	Start Mixing Tail Slurry	
02/12/2011	01:20:20	29	4.4	12.61	673.5		
02/12/2011	01:22:00	96	4.4	12.73	680.8		
02/12/2011	01:23:40	43	4.6	12.79	688.2		
02/12/2011	01:25:20	138	6.2	12.85	696.6		
02/12/2011	01:27:00	140	6.2	12.87	706.7		
02/12/2011	01:28:40	126	6.2	12.83	717.0		
02/12/2011	01:30:20	126	6.2	12.80	727.3		
02/12/2011	01:32:00	120	6.2	12.77	737.6		
02/12/2011	01:33:40	128	6.2	12.78	747.9		
02/12/2011	01:35:20	125	6.2	12.79	758.2		
02/12/2011	01:37:00	119	6.2	12.81	768.5		
02/12/2011	01:38:40	128	6.2	12.82	778.8		
02/12/2011	01:40:20	21	5.8	12.82	788.6		
02/12/2011	01:42:00	102	5.7	12.80	798.2		
02/12/2011	01:43:40	152	6.5	12.81	808.6		
02/12/2011	01:45:20	157	6.5	12.81	819.3		
02/12/2011	01:47:00	143	6.5	12.79	830.1		
02/12/2011	01:48:40	154	6.5	12.80	840.8		
02/12/2011	01:50:20	149	6.4	12.73	851.6		
02/12/2011	01:52:00	169	6.5	12.94	862.4		
02/12/2011	01:53:40	152	6.4	12.79	873.1		
02/12/2011	01:55:20	153	6.5	12.79	883.9		
02/12/2011	01:57:00	155	6.5	12.82	894.6		
02/12/2011	01:58:40	144	6.5	12.83	905.4		
02/12/2011	02:00:20	165	6.5	12.82	916.2		
02/12/2011	02:02:00	148	6.5	12.81	926.9		
02/12/2011	02:03:40	145	6.5	12.80	937.7		
02/12/2011	02:05:20	147	6.5	12.80	948.4		
02/12/2011	02:07:00	157	6.5	12.79	959.2		
02/12/2011	02:08:40	155	6.5	12.82	969.9		
02/12/2011	02:10:20	128	6.5	12.81	980.7		
02/12/2011	02:12:00	145	6.4	12.80	991.4		
02/12/2011	02:13:40	132	6.5	12.80	1002.2		
02/12/2011	02:15:20	-9	4.2	12.78	1011.5		
02/12/2011	02:17:00	-3	4.2	12.77	1018.5		
02/12/2011	02:17:32	-7	4.2	12.77	1020.7	End Tail Slurry	
02/12/2011	02:17:33	-2	4.2	12.77	1020.8	Drop Top Plug	
02/12/2011	02:17:34	-13	4.2	12.77	1020.9	Start Displacement	
02/12/2011	02:17:36	-22	4.2	12.76	1021.0	Reset Total, Vol = 353.52 bbl	
02/12/2011	02:17:37	-22	4.2	12.76	1021.1	Displace 143 bbl Water	
02/12/2011	02:18:40	-10	4.2	12.71	1025.5		
02/12/2011	02:20:20	-5	4.2	12.72	1032.5		
02/12/2011	02:22:00	-127	0.0	12.92	1034.7		
02/12/2011	02:23:40	-124	0.0	12.86	1034.7		
02/12/2011	02:25:20	1	2.0	12.34	1035.1		

Well			Field		Job Start	Customer		Job Number
RG 334-24-198 RGU 334-24-198			Ryan Gulch		Feb/11/2011	Williams		
Date	Time 24-hr clock	Treating Pressure PSI	Flow Rate B/M	Density LB/G	Volume BBL	Message		
02/12/2011	02:28:40	49	6.6	8.49	1051.3			
02/12/2011	02:30:20	185	8.3	8.35	1062.8			
02/12/2011	02:32:00	50	4.6	8.33	1075.4			
02/12/2011	02:33:40	59	4.6	8.38	1083.0			
02/12/2011	02:35:20	67	4.0	8.37	1090.6			
02/12/2011	02:37:00	67	4.0	8.38	1097.3			
02/12/2011	02:38:40	136	4.0	8.38	1104.0			
02/12/2011	02:40:20	196	6.0	8.38	1111.3			
02/12/2011	02:42:00	212	6.0	8.38	1121.3			
02/12/2011	02:43:40	327	6.0	8.38	1131.2			
02/12/2011	02:45:20	364	6.0	8.38	1141.1			
02/12/2011	02:47:00	330	6.0	8.38	1151.1			
02/12/2011	02:48:40	310	5.9	8.38	1161.0			
02/12/2011	02:50:20	346	6.0	8.38	1170.9			
02/12/2011	02:52:00	227	2.3	8.38	1177.8			
02/12/2011	02:53:40	227	2.3	8.38	1181.6			
02/12/2011	02:55:20	1191	0.0	8.38	1182.8			
02/12/2011	02:57:00	-125	0.0	8.38	1182.8			

### Post Job Summary

Average Pump Rates, bbl/min					Volume of Fluid Injected, bbl					
Slurry 13.9	N2	Mud 0.0	Maximum Rate 25.0		Total Slurry 1182.8	Mud 0.0	Spacer 41.4	N2		
Treating Pressure Summary, psi					Breakdown Fluid					
Maximum 3098	Final 0	Average 135	Bump Plug to 1000	Breakdown	Type FreshWater	Volume 1135.0 bbl	Density 8.34 lb/gal			
Avg. N2 Percent %		Designed Slurry Volume 630.0 bbl	Displacement 499.8 bbl	Mix Water Temp 65 degF	Cement Circulated to Surface? <input type="checkbox"/>		Volume bbl			
					Washed Thru Perfs <input type="checkbox"/>		To ft			
Customer or Authorized Representative Joe Honeycutt			Schlumberger Supervisor Tom Leduc			Circulation Lost <input checked="" type="checkbox"/>	Job Completed <input checked="" type="checkbox"/>			
						-	-			