

A&N FARMS 21-9 (BEFORE P&A)



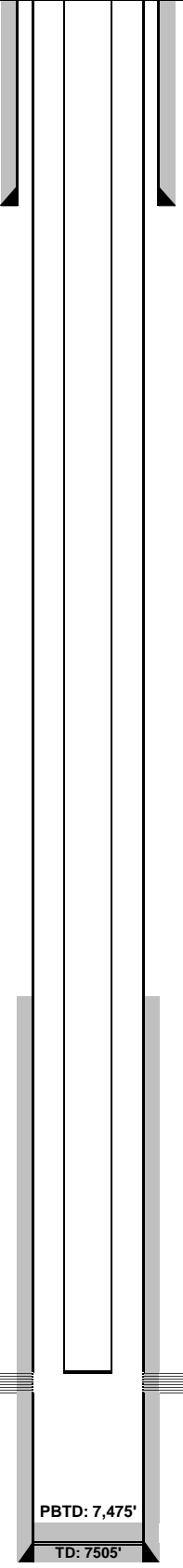
DESCRIPTION DEPTH WELLBORE WELL HISTORY

8-5/8" 24# Surface Casing: 382'

3-1/2" Production TOC: 6608'

1-7/8" Production Tubing: 7,280'

3-1/2" 9.3# Production Casing: 7,505'



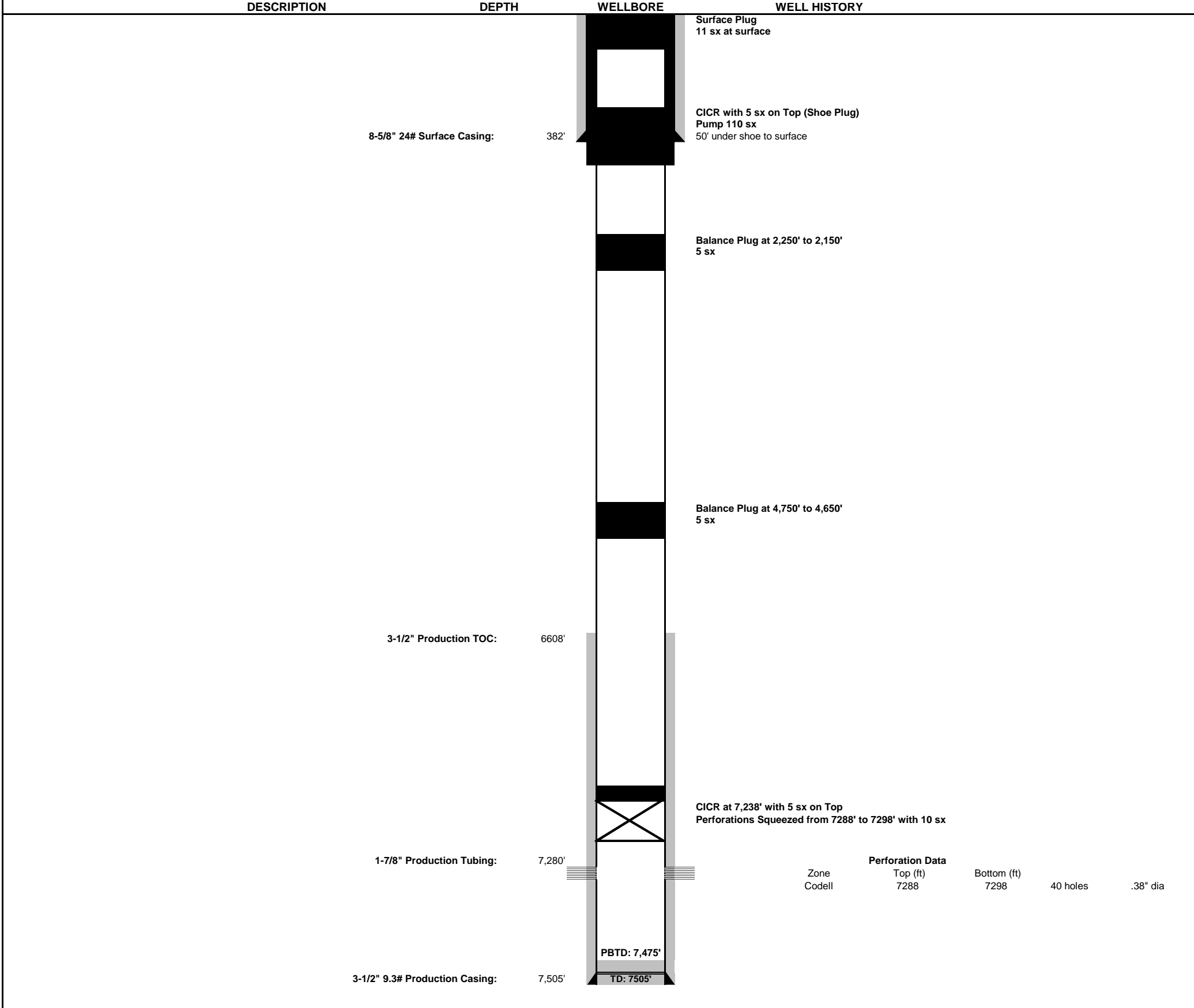
Zone Perforation Data
 Codell Top (ft) Bottom (ft) 40 holes .38" dia

WELL: A&N FARMS 21-9
LOCATION: NENW SEC 9 T6N R66W
 FWL 200' FNL 660'
FORMATION: Codell
API #: 05-123-13983
Field: Eaton
CLASSIFICATION:
CURRENT STATUS: Shut In
 Spud: 2/23/1997
 TD: 2/28/1997
1st Sales: 3/15/1997

TUBULAR DATA

Type	Size	Weight	Grade	Top	Bottom	Burst	Collapse
Surface	8 5/8"	24.0 ppf	-	0	382'		
Production	3 1/2"	9.3 ppf	-	0	7,505'		
Tubing	1 7/8"	-	-	0	7,280'		

A&N FARMS 21-9 (AFTER P&A)



WELL: A&N FARMS 21-9
LOCATION: NENW SEC 9 T6N R66W
 FWL 200' FNL 660'
FORMATION: Codell
API #: 05-123-13983
Field: Eaton
CLASSIFICATION:
CURRENT STATUS: Shut In
 Spud: 2/23/1997
 TD: 2/28/1997
 1st Sales: 3/15/1997

TUBULAR DATA

Type	Size	Weight	Grade	Top	Bottom	Burst	Collapse
Surface	8 5/8"	24.0 ppf	-	0	382'		
Production	3 1/2"	9.3 ppf	-	0	7,505'		
Tubing	1 7/8"	-	-	0	7,280'		