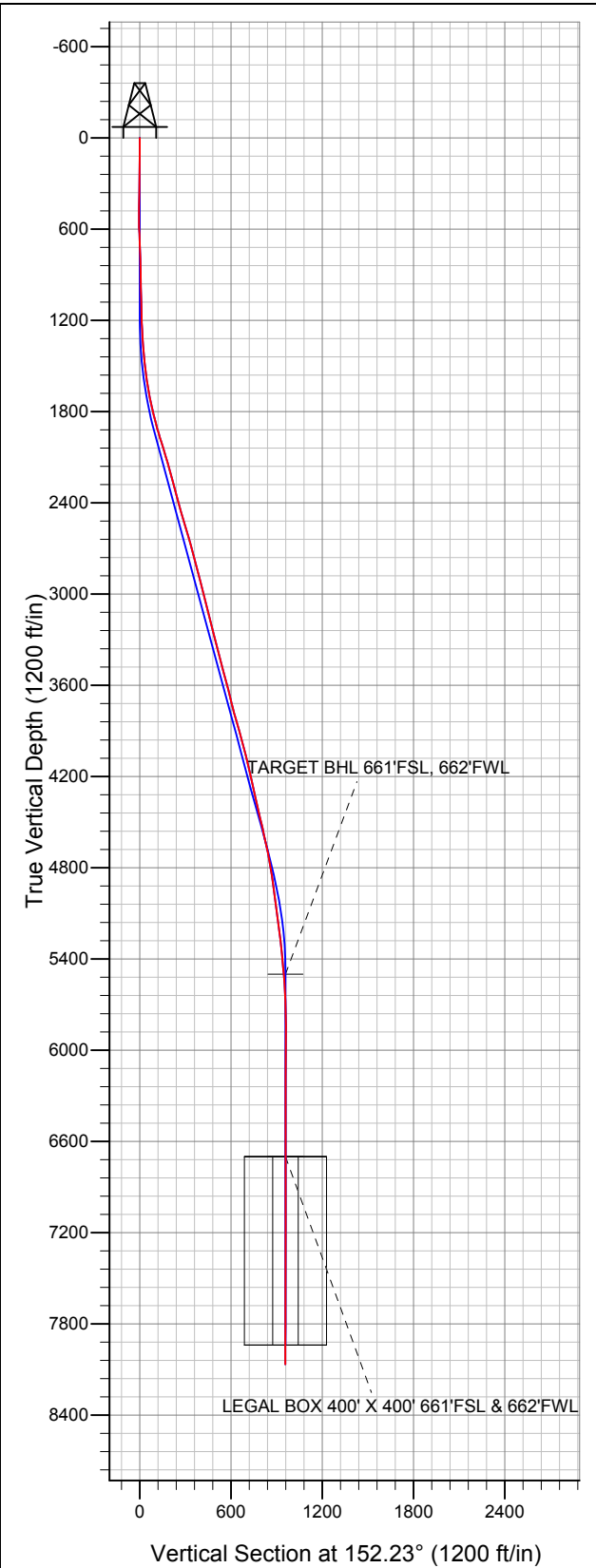


# Well Name: SRC Margil 14-34D

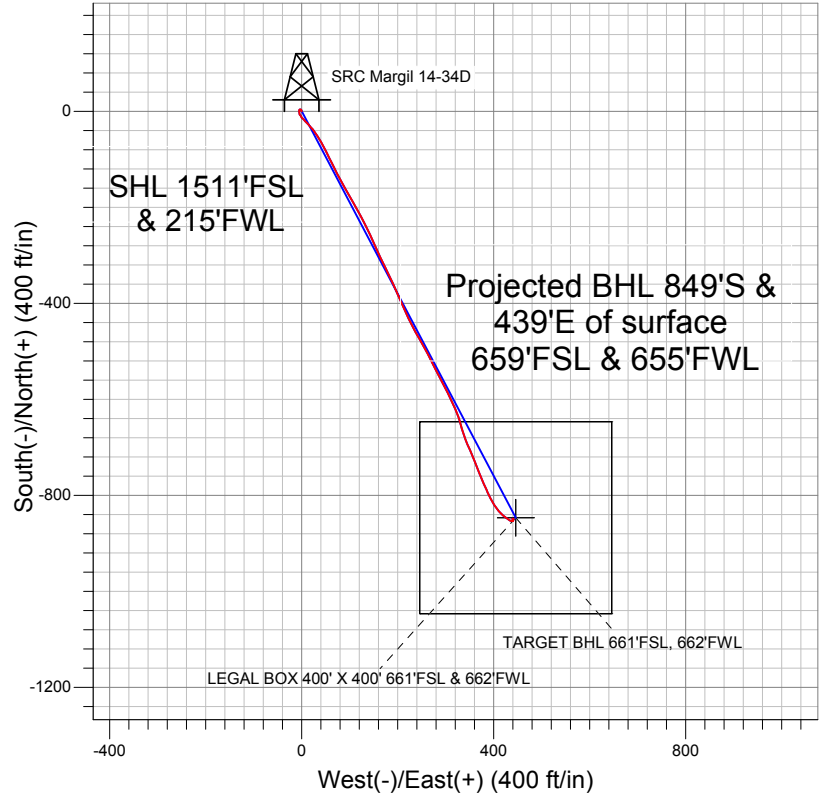
Surface Location: SRC Margil 13-34D Pad Sec.34-T4N-R68W  
 North American Datum 1983 US State Plane 1983 Colorado Northern Zone  
 Ground Elevation: 5132.0

+N/-S	+E/-W	Northing	Easting	Latitude	Longitude	Slot
0.0	0.0	1340393.29	3140111.77	40.266690	-104.997909	

Original Well ElevWELL @ 5145.0ft (Original Well Elev)



## Synergy Resources



### LEGEND

- Survey #1
- SRC Margil 14-34D, Wellbore #1, Plan #1 (12-26-11) R V0
- Wellbore #1

## Final Survey Plot

Projected Final Survey -  
 8179'MD & 8067'TVD @ 956°VS  
 0.40 deg Inc 273.60 deg AZ

Project: SEC.34-T4N-R68W  
 Site: SRC Margil 13-34D Pad Sec.34-T4N-R68W  
 Well: SRC Margil 14-34D  
 Plan: Wellbore #1



## **Synergy Resources**

**SEC.34-T4N-R68W**

**SRC Margil 13-34D Pad Sec.34-T4N-R68W**

**SRC Margil 14-34D**

**Wellbore #1**

**Survey: Survey #1**

## **Standard Survey Report**

**03 January, 2012**

Survey										
	Measured Depth (ft)	Inclination (°)	Azimuth (°)	Vertical Depth (ft)	+N/-S (ft)	+E/-W (ft)	Vertical Section (ft)	Dogleg Rate (°/100ft)	Build Rate (°/100ft)	Turn Rate (°/100ft)
Survey	0.0	0.00	0.00	0.0	0.0	0.0	0.0	0.00	0.00	0.00
	90.0	0.40	354.00	90.0	0.3	0.0	-0.3	0.44	0.44	0.00
	181.0	0.50	337.60	181.0	1.0	-0.2	-1.0	0.18	0.11	-18.02
	272.0	1.00	342.90	272.0	2.1	-0.6	-2.2	0.55	0.55	5.82
	364.0	0.70	300.40	364.0	3.2	-1.3	-3.4	0.74	-0.33	-46.20
	455.0	1.00	299.70	455.0	3.8	-2.5	-4.6	0.33	0.33	-0.77
	545.0	1.60	231.80	544.9	3.5	-4.2	-5.0	1.71	0.67	-75.44
	631.0	2.60	184.70	630.9	0.8	-5.3	-3.1	2.22	1.16	-54.77
	702.0	2.70	170.80	701.8	-2.5	-5.1	-0.2	0.91	0.14	-19.58
	796.0	1.80	163.80	795.7	-6.1	-4.4	3.4	1.00	-0.96	-7.45
	890.0	1.30	116.70	889.7	-8.0	-3.0	5.7	1.40	-0.53	-50.11
	983.0	1.10	156.60	982.7	-9.3	-1.7	7.4	0.90	-0.22	42.90
1,077.0	1.10	164.00	1,076.7	-11.0	-1.1	9.2	0.15	0.00	7.87	

<b>Company:</b>	Synergy Resources	<b>Local Co-ordinate Reference:</b>	Well SRC Margil 14-34D
<b>Project:</b>	SEC.34-T4N-R68W	<b>TVD Reference:</b>	WELL @ 5145.0ft (Original Well Elev)
<b>Site:</b>	SRC Margil 13-34D Pad Sec.34-T4N-R68W	<b>MD Reference:</b>	WELL @ 5145.0ft (Original Well Elev)
<b>Well:</b>	SRC Margil 14-34D	<b>North Reference:</b>	True
<b>Wellbore:</b>	Wellbore #1	<b>Survey Calculation Method:</b>	Minimum Curvature
<b>Design:</b>	Wellbore #1	<b>Database:</b>	Landmark

Survey										
Measured Depth (ft)	Inclination (°)	Azimuth (°)	Vertical Depth (ft)	+N/-S (ft)	+E/-W (ft)	Vertical Section (ft)	Dogleg Rate (°/100ft)	Build Rate (°/100ft)	Turn Rate (°/100ft)	
1,171.0	1.70	145.20	1,170.7	-13.0	-0.1	11.5	0.80	0.64	-20.00	
1,264.0	3.00	134.30	1,263.6	-15.8	2.5	15.1	1.47	1.40	-11.72	
1,358.0	4.40	138.80	1,357.4	-20.2	6.6	21.0	1.52	1.49	4.79	
1,452.0	5.80	134.60	1,451.0	-26.3	12.4	29.0	1.54	1.49	-4.47	
1,545.0	7.50	137.90	1,543.4	-34.1	19.8	39.4	1.87	1.83	3.55	
1,639.0	9.40	145.50	1,636.4	-45.0	28.2	53.0	2.34	2.02	8.09	
1,733.0	11.70	148.00	1,728.8	-59.4	37.6	70.1	2.49	2.45	2.66	
1,827.0	13.70	154.10	1,820.5	-77.5	47.6	90.7	2.56	2.13	6.49	
1,920.0	15.70	152.40	1,910.4	-98.5	58.2	114.3	2.20	2.15	-1.83	
2,014.0	17.70	153.80	2,000.4	-122.6	70.4	141.3	2.17	2.13	1.49	
2,108.0	16.50	152.00	2,090.3	-147.3	83.0	169.0	1.40	-1.28	-1.91	
2,201.0	15.30	150.80	2,179.7	-169.6	95.2	194.4	1.34	-1.29	-1.29	
2,295.0	14.90	147.80	2,270.5	-190.7	107.7	218.9	0.93	-0.43	-3.19	
2,389.0	15.50	152.50	2,361.2	-212.0	119.9	243.5	1.46	0.64	5.00	
2,483.0	15.80	153.40	2,451.7	-234.6	131.4	268.8	0.41	0.32	0.96	
2,576.0	16.40	154.80	2,541.1	-257.8	142.7	294.6	0.77	0.65	1.51	
2,670.0	16.40	155.70	2,631.2	-281.9	153.8	321.1	0.27	0.00	0.96	
2,764.0	14.80	155.30	2,721.8	-304.9	164.3	346.4	1.71	-1.70	-0.43	
2,857.0	14.90	154.60	2,811.7	-326.5	174.4	370.2	0.22	0.11	-0.75	
2,951.0	14.70	153.40	2,902.5	-348.1	184.9	394.2	0.39	-0.21	-1.28	
3,044.0	14.20	157.10	2,992.6	-369.2	194.6	417.3	1.13	-0.54	3.98	
3,138.0	14.20	154.50	3,083.7	-390.2	204.1	440.3	0.68	0.00	-2.77	
3,232.0	13.70	158.00	3,175.0	-410.9	213.2	462.9	1.04	-0.53	3.72	
3,325.0	14.20	154.10	3,265.2	-431.4	222.3	485.3	1.14	0.54	-4.19	
3,419.0	15.30	151.30	3,356.1	-452.6	233.3	509.2	1.39	1.17	-2.98	
3,513.0	15.30	150.40	3,446.8	-474.3	245.4	534.0	0.25	0.00	-0.96	
3,606.0	14.70	151.30	3,536.6	-495.3	257.1	558.1	0.69	-0.65	0.97	
3,700.0	14.00	154.30	3,627.7	-516.0	267.8	581.4	1.09	-0.74	3.19	
3,794.0	13.80	151.70	3,718.9	-536.2	278.0	603.9	0.70	-0.21	-2.77	
3,887.0	16.00	151.80	3,808.8	-557.2	289.3	627.8	2.37	2.37	0.11	
3,981.0	15.70	153.40	3,899.2	-580.0	301.1	653.5	0.56	-0.32	1.70	
4,074.0	15.30	155.20	3,988.9	-602.4	311.9	678.4	0.67	-0.43	1.94	
4,168.0	13.80	157.10	4,079.8	-624.0	321.5	701.9	1.67	-1.60	2.02	
4,262.0	12.00	164.80	4,171.5	-643.7	328.4	722.6	2.64	-1.91	8.19	
4,355.0	12.60	161.50	4,262.3	-662.7	334.2	742.1	0.99	0.65	-3.55	
4,449.0	14.10	161.00	4,353.8	-683.2	341.2	763.5	1.60	1.60	-0.53	
4,543.0	13.00	155.70	4,445.2	-703.7	349.2	785.4	1.76	-1.17	-5.64	
4,636.0	12.70	154.80	4,535.8	-722.5	357.9	806.0	0.39	-0.32	-0.97	
4,730.0	11.50	162.40	4,627.8	-740.8	365.1	825.6	2.12	-1.28	8.09	
4,824.0	11.90	155.90	4,719.8	-758.6	371.9	844.5	1.46	0.43	-6.91	
4,918.0	9.90	156.90	4,812.1	-774.8	379.0	862.2	2.14	-2.13	1.06	
5,011.0	8.20	155.30	4,904.0	-788.2	385.0	876.8	1.85	-1.83	-1.72	
5,105.0	6.30	156.80	4,997.2	-799.0	389.8	888.6	2.03	-2.02	1.60	
5,199.0	7.70	151.50	5,090.5	-809.3	394.8	900.1	1.64	1.49	-5.64	
5,293.0	8.10	147.60	5,183.6	-820.4	401.4	913.0	0.71	0.43	-4.15	
5,386.0	6.50	140.80	5,275.8	-830.1	408.2	924.7	1.95	-1.72	-7.31	
5,480.0	6.00	134.60	5,369.3	-837.6	415.1	934.6	0.89	-0.53	-6.60	
5,574.0	5.60	129.70	5,462.8	-844.0	422.1	943.5	0.68	-0.43	-5.21	
5,612.8	5.06	128.96	5,501.5	-846.3	424.9	946.8	1.40	-1.38	-1.90	
TARGET BHL 661'FSL, 662'FWL										
5,668.0	4.30	127.60	5,556.5	-849.1	428.4	950.9	1.40	-1.38	-2.47	
5,761.0	3.60	120.00	5,649.2	-852.7	433.7	956.5	0.94	-0.75	-8.17	
5,855.0	1.20	79.20	5,743.1	-854.0	437.2	959.3	2.98	-2.55	-43.40	
5,949.0	1.10	67.10	5,837.1	-853.4	439.0	959.7	0.28	-0.11	-12.87	

<b>Company:</b>	Synergy Resources	<b>Local Co-ordinate Reference:</b>	Well SRC Margil 14-34D
<b>Project:</b>	SEC.34-T4N-R68W	<b>TVD Reference:</b>	WELL @ 5145.0ft (Original Well Elev)
<b>Site:</b>	SRC Margil 13-34D Pad Sec.34-T4N-R68W	<b>MD Reference:</b>	WELL @ 5145.0ft (Original Well Elev)
<b>Well:</b>	SRC Margil 14-34D	<b>North Reference:</b>	True
<b>Wellbore:</b>	Wellbore #1	<b>Survey Calculation Method:</b>	Minimum Curvature
<b>Design:</b>	Wellbore #1	<b>Database:</b>	Landmark

Survey									
Measured Depth (ft)	Inclination (°)	Azimuth (°)	Vertical Depth (ft)	+N/-S (ft)	+E/-W (ft)	Vertical Section (ft)	Dogleg Rate (°/100ft)	Build Rate (°/100ft)	Turn Rate (°/100ft)
6,042.0	0.40	59.20	5,930.1	-852.9	440.1	959.8	0.76	-0.75	-8.49
6,136.0	0.10	152.40	6,024.1	-852.8	440.5	959.8	0.44	-0.32	99.15
6,230.0	0.20	288.80	6,118.1	-852.8	440.3	959.8	0.30	0.11	145.11
6,324.0	0.20	297.70	6,212.1	-852.7	440.0	959.5	0.03	0.00	9.47
6,417.0	0.20	303.20	6,305.1	-852.6	439.8	959.3	0.02	0.00	5.91
6,511.0	0.20	348.50	6,399.1	-852.3	439.6	959.0	0.16	0.00	48.19
6,605.0	0.10	31.90	6,493.1	-852.1	439.6	958.8	0.15	-0.11	46.17
6,699.0	0.20	10.00	6,587.1	-851.8	439.7	958.6	0.12	0.11	-23.30
6,792.0	0.20	55.30	6,680.1	-851.6	439.8	958.4	0.17	0.00	48.71
6,811.9	0.20	57.79	6,700.0	-851.5	439.9	958.4	0.04	0.00	12.51
LEGAL BOX 400' X 400' 661'FSL & 662'FWL									
6,886.0	0.20	67.10	6,774.1	-851.4	440.1	958.4	0.04	0.00	12.56
6,980.0	0.20	250.30	6,868.1	-851.4	440.1	958.4	0.43	0.00	-188.09
7,074.0	0.30	200.30	6,962.1	-851.7	439.9	958.6	0.24	0.11	-53.19
7,167.0	0.20	230.40	7,055.1	-852.0	439.7	958.8	0.17	-0.11	32.37
7,261.0	0.10	61.10	7,149.1	-852.1	439.6	958.8	0.32	-0.11	-180.11
7,355.0	0.20	35.60	7,243.1	-851.9	439.8	958.7	0.13	0.11	-27.13
7,448.0	0.40	64.10	7,336.1	-851.7	440.2	958.7	0.26	0.22	30.65
7,542.0	0.40	62.70	7,430.1	-851.4	440.8	958.7	0.01	0.00	-1.49
7,636.0	0.40	41.80	7,524.1	-851.0	441.3	958.6	0.15	0.00	-22.23
7,732.0	0.40	18.10	7,620.1	-850.4	441.6	958.2	0.17	0.00	-24.69
7,826.0	0.50	339.20	7,714.1	-849.7	441.5	957.6	0.33	0.11	-41.38
7,920.0	0.60	278.60	7,808.1	-849.2	440.9	956.9	0.60	0.11	-64.47
8,013.0	0.60	270.30	7,901.1	-849.2	439.9	956.4	0.09	0.00	-8.92
8,135.0	0.40	273.60	8,023.1	-849.1	438.9	955.8	0.17	-0.16	2.70
8,179.0	0.40	273.60	8,067.1	-849.1	438.6	955.7	0.00	0.00	0.00

Checked By: \_\_\_\_\_ Approved By: \_\_\_\_\_ Date: \_\_\_\_\_