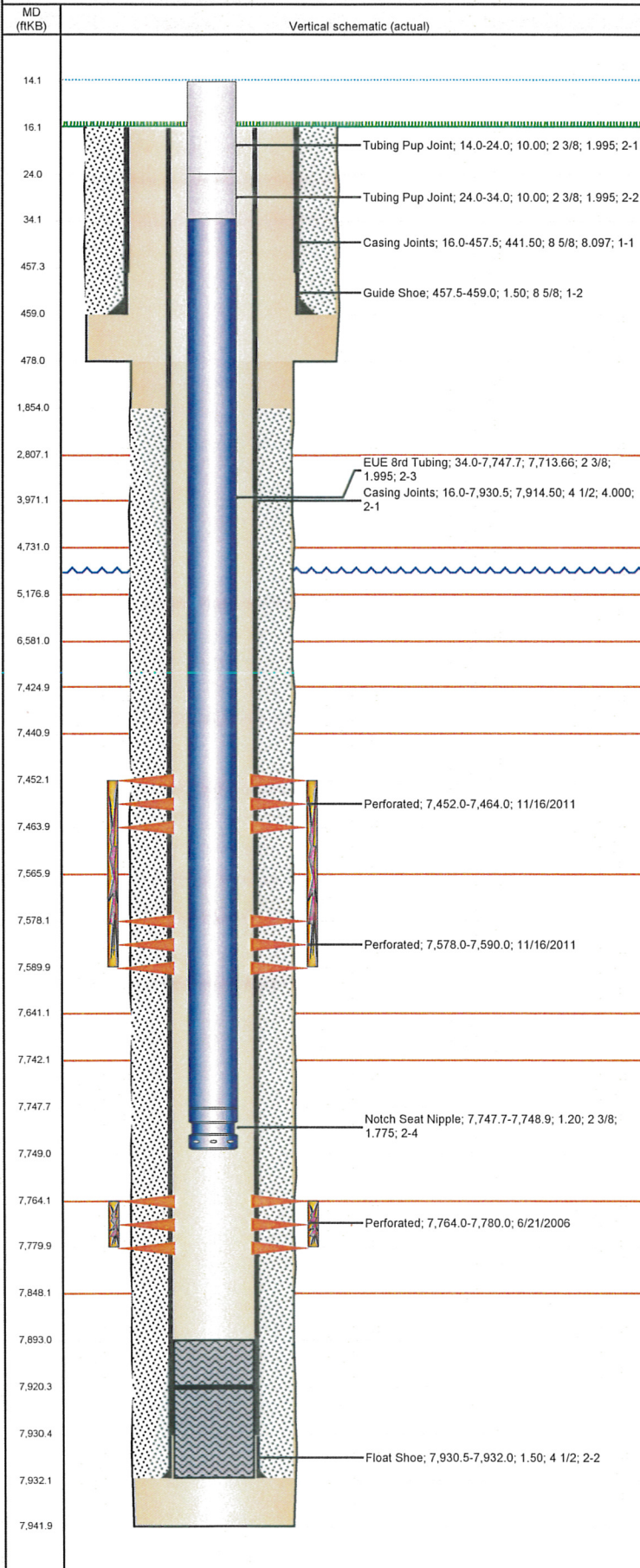


Frac Wellbore Schematic Report

Well Name: STEVE J18-09

DEVIATED - ORIGINAL HOLE, 8/2/2012 10:29:36 AM



Well Header

API 05-123-23630	Business Unit WATTENBERG	District 15	Well Config DEVIATED
Original KB Elevation (ft) 4,973.00	KB - GL / MSL (ftKB) 16.00	Spud Date 5/21/2006	P & A Date
Comment			

Directions To Well

95TH AVE & 37TH ST, NORTH 1.3 MILES, EAST/SOUTHEAST AND BACK NORTH .8 AROUND LAKE TO TANK BATTERY, WELL IS NORTH OF TANK BATTERY. THREE WELL PAD, EAST WELL.

Current PBTD (ftKB)

ORIGINAL HOLE - 7,920.2

Surface Location (Congressional)

Quarter 1	Quarter 2	Quarter 3	Quarter 4	Section	Township	Twnshp N..	Range	Rng E/W Dir
		NW	SE	18	5	N	66	W

Bottom Hole Location

North-South Distance (ft)	From N or S Line	East-West Distance (ft)	From E or W Line
2,083.0	FSL	760.0	FEL

Plug Back Total Depths

Date	Depth (ftKB)	Method	Com
5/26/2006	7,893.0	CASED HOLE LOG	DEPTH LOGGER ON CBL
5/26/2006	7,915.0	CASING TALLY	LATCH DOWN BAFFLE

Wellbore Sections

Section Des	Size (in)	Act Top (ftKB)	Act Btm (ftKB)
SURFACE	12 1/4	16.0	478.0
PRODUCTION	7 7/8	478.0	7,942.0

Zone Statuses

Zone Name	Status Date	Status	Job
CODELL	7/30/2006	PR	DRILLING/COMPLETION - ORIGINAL, 5/21/2006 00:00
CODELL	11/17/2011	PR	RE-FRAC & RECOMPLETE, 10/31/2011 06:00
NIOBRARA	11/17/2011	PR	RE-FRAC & RECOMPLETE, 10/31/2011 06:00

Casing Strings

Csg Des	Run Date	OD (in)	Wt/Len (lb/ft)	Grade	Top (ftKB)	Set Depth (ftKB)
Surface	5/21/2006	8 5/8	24.00	J-55	16.0	459.0
Production	5/26/2006	4 1/2	11.60	M-80	16.0	7,932.0

Cement

Des	Top (ftKB)	Btm (ftKB)
SURFACE CASING CEMENT	16.0	459.0
PRODUCTION CASING CEMENT	1,854.0	7,932.0

Tubing Components

Item Des	OD (in)	Wt (lb/ft)	Grade	Jts	Len (ft)
Tubing Pup Joint	2 3/8	4.70	J-55	1	10.00
Tubing Pup Joint	2 3/8	4.70	J-55	1	10.00
EUE 8rd Tubing	2 3/8	4.70	J-55	250	7,713.66
Notch Seat Nipple	2 3/8	4.70	N-80	1	1.20

Perforation Data

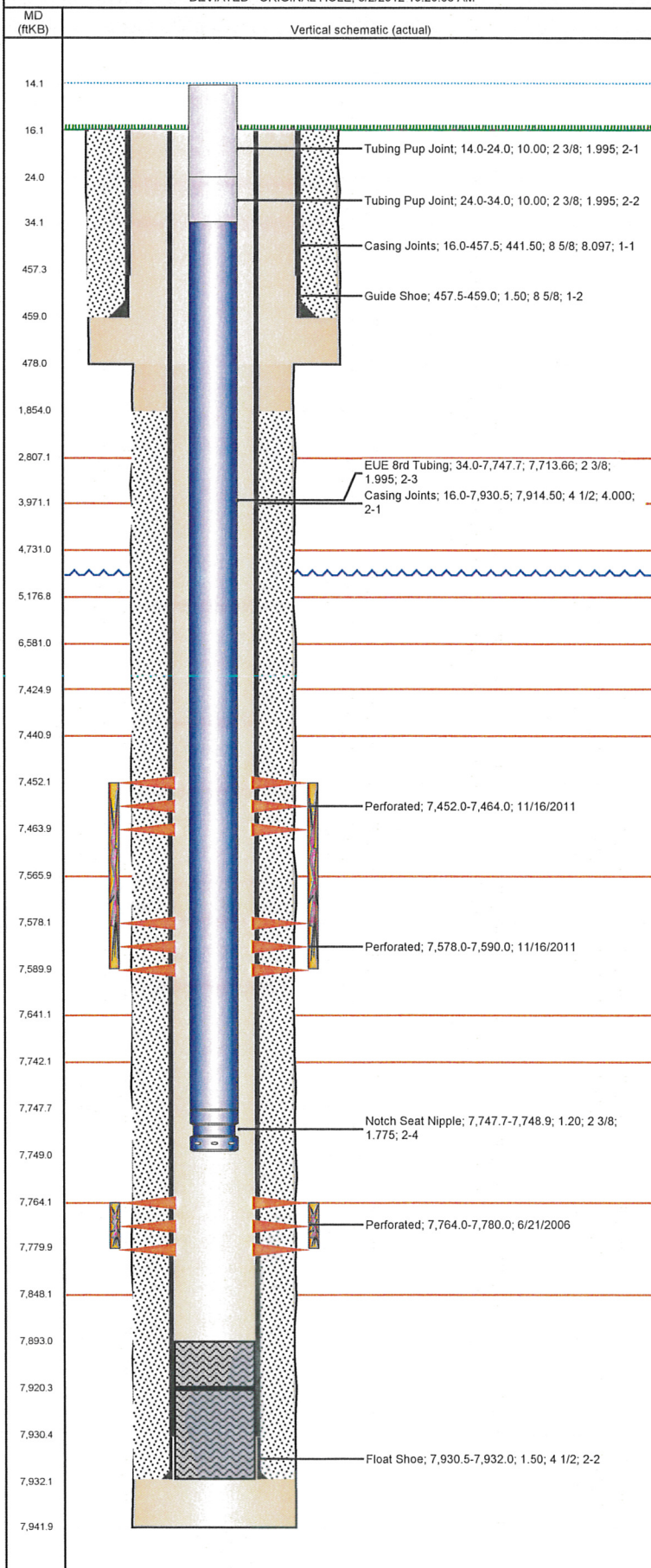
Zone	Bnch/St g	Entered Shot Total	Top (ftKB)	Btm (ftKB)	Date
NIOBRARA, ORIGINAL HOLE		24	7,452.0	7,464.0	11/16/2011
NIOBRARA, ORIGINAL HOLE		24	7,578.0	7,590.0	11/16/2011
CODELL, ORIGINAL HOLE		64	7,764.0	7,780.0	6/21/2006

Stimulations & Treatments

Bnch/Stg	Date	Zone	Primary Job Type
	7/28/2006	CODELL, ORIGINAL HOLE	DRILLING/COMPLETION - ORIGINAL
Comment			
DEADSTRING FRAC			
Total Add Amount	Total Clean Volume...	Vol Slurry Tot (gal)	Vol Gas Tot (MCF)
Proppant Ottawa 271320 lb		126420.00	
Avg Treat Pressure (psi)	Max Treat Pressure (psi)	Avg Treat Rate (bbl/min)	Max Treat Rate (bbl/min)
6,381.0	7,293.0	0.35	0.36

Well Name: STEVE J18-09

DEVIATED - ORIGINAL HOLE, 8/2/2012 10:29:36 AM



Stimulations & Treatments

Bnch/Stg	Date	Zone	Primary Job Type
	11/16/2011	CODELL, ORIGINAL HOLE	RE-FRAC & RECOMPLETE
Comment (CODELL): BREAK - 3939 PSI @ 4.7 BPM. ISIP - 3113, 5 MIN - 2048. REVERSE STEP - 11 PERFS OPEN, PERF FRIC - 312 PSI, NWB - 527 PSI. BECAUSE OF NWB FRIC RAN 100 BBLs OF 0.5 PSA AFTER FULL WELLBORE OF XLINK FLUID, NO CHANGE IN PRESSURE TREND. INCREASED GEL LOADING BY 2 CP. FINAL ISIP - 4097, 5 MIN - 3618. AVG VISC - 25.7, AVG TEMP - 67.6, AVG PH 10.19. TREATMENT WENT WELL.			
Total Add Amount	Total Clean Volume...	Vol Slurry Tot (gal)	Vol Gas Tot (MCF)
Proppant Ottawa 248741.003 lb	130515.00	141932.70	
Avg Treat Pressure (psi)	Max Treat Pressure (psi)	Avg Treat Rate (bbl/min)	Max Treat Rate (bbl/min)
4,334.0	4,647.0	14.60	14.90

Bnch/Stg	Date	Zone	Primary Job Type
	11/16/2011	NIOBRARA, ORIGINAL HOLE	RE-FRAC & RECOMPLETE
Comment (NIOBRARA): BREAK - 2804 PSI @ 1.3 BPM. ISIP - 3447. CROSSLINK SAMPLES WERE WEAK SO INCREASED XLW-14, PRESSURE TREND WAS FLAT THOUGH. FINAL ISIP - 3482, 5 MIN - 3278. AVG VISC - 18.6, AVG PH - 10.5, AVG TEMP - 61.9. TREATMENT WENT WELL.			
Total Add Amount	Total Clean Volume...	Vol Slurry Tot (gal)	Vol Gas Tot (MCF)
Proppant Ottawa 251859.904 lb	155802.79	167143.20	
Avg Treat Pressure (psi)	Max Treat Pressure (psi)	Avg Treat Rate (bbl/min)	Max Treat Rate (bbl/min)
4,445.0	4,669.0	38.80	40.80

Other In Hole

Run Date	Des	OD (in)	Top (ftKB)	Btm (ftKB)

Logs

Date	Type	Top (ftKB)	Btm (ftKB)
5/26/2006	COMPENSATED DENSITY	2,750.0	7,918.0
5/26/2006	INDUCTION	459.0	7,938.0
6/21/2006	CBL/CCL/GR	5,850.0	7,892.0