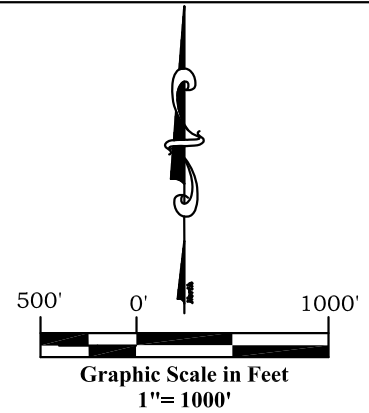
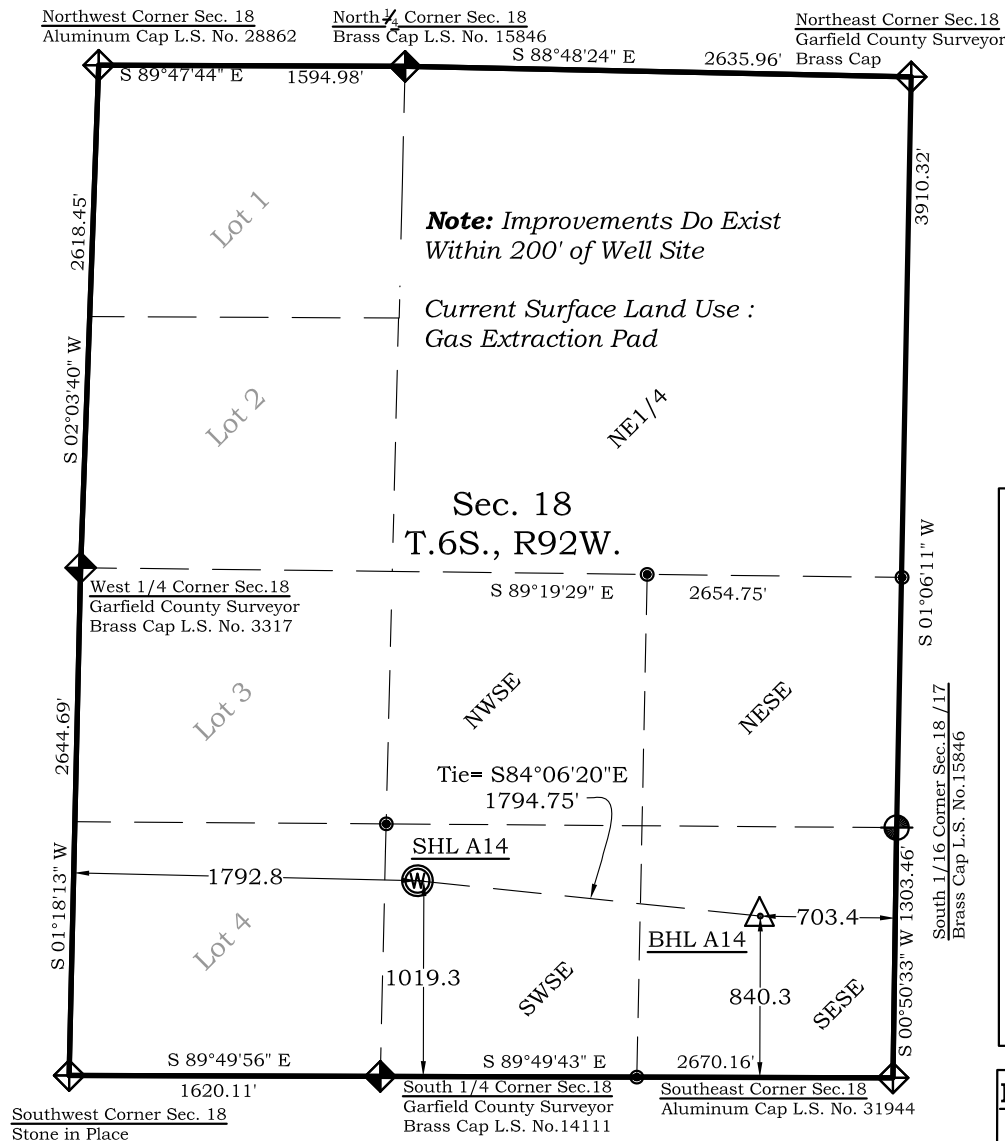


Well Location Plat

Dever A14

Section 18, Township 6 South, Range 92 West



Legend

- ◈ - Field Surveyed Section Corner
- ◈ - Field Surveyed Quarter Corner
- - Calculated Section Corner Location
- ◈ - Field Surveyed 1/6 Corner

Surface: Dever A14

1019' FSL
1793' FWL
Gnd El= 5572
Pad El= 5572
NAD83
Lat: 39.522139281°N
Long: 107.708721378°W

NAD27
Lat: 39.522158771°N
Long: 107.708104674°W

UTM 13 NORTH
NAD 1983
NORTHING
14364228.046
EASTING
876520.706

Bottom Hole: Dever A14

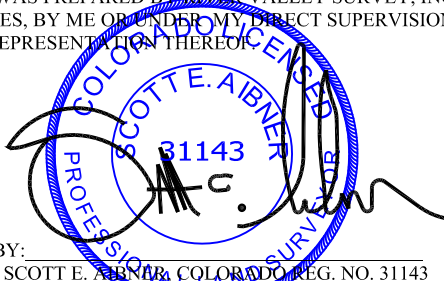
840' FSL
703' FEL
NAD83
Lat: 39.521780916°N
Long: 107.702377966°W
NAD27
Lat: 39.521800401°N
Long: 107.701761500°W

Notes:

1. LATITUDE AND LONGITUDE COORDINATES ARE DIFFERENTIALLY CORRECTED AND BASED ON PUBLISHED NGS CONTROL STATION "WDP-5". SYSTEM: UTM ZONE: 13 NORTH DATUM: NAD 1983 (CONUS)
2. ELEVATIONS ARE BASED ON NAVD OF 1983.
3. ALL BOTTOM AND TOP HOLE LOCATIONS ARE MEASURED 90 DEGREES FROM SECTION LINE.
4. USGS QUADRANGLE MAP "SILT".
5. CURRENT SURFACE LAND USE: GAS PAD.
6. PDOP AT THE TIME OF LOCATION OF SURFACE WELL = 3.6

SURVEYOR'S CERTIFICATE

I, SCOTT E. AIBNER, A REGISTERED LAND SURVEYOR, LICENSED UNDER THE LAWS OF THE STATE OF COLORADO DO HEREBY CERTIFY THAT THE SURVEY SHOWN HEREON WAS PREPARED BY RIVER VALLEY SURVEY, INC., FOR ANTERO RESOURCES, BY ME OR UNDER MY DIRECT SUPERVISION AND THAT THIS PLAT IS A TRUE REPRESENTATION THEREOF.

BY: 
SCOTT E. AIBNER, COLORADO REG. NO. 31143



River Valley Survey, Inc.
110 East 3rd. Street, Suite 213
Rifle, Colorado 81650
Ph: 970-379-7846

Project: Dever A Pad

File No. 06001-03A

Field Date: 01-25-06

Scale: 1"= 1000'

Date: 05-29-12

Sheet: 1 of 1

Well Location Plat
Prepared For Antero Resources

Situate In:
SW1/4SE1/4 Section 18, T6S., R. 92 W.
of the 6th P.M., Garfield County,
Colorado

