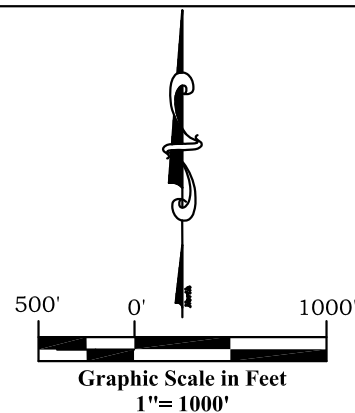
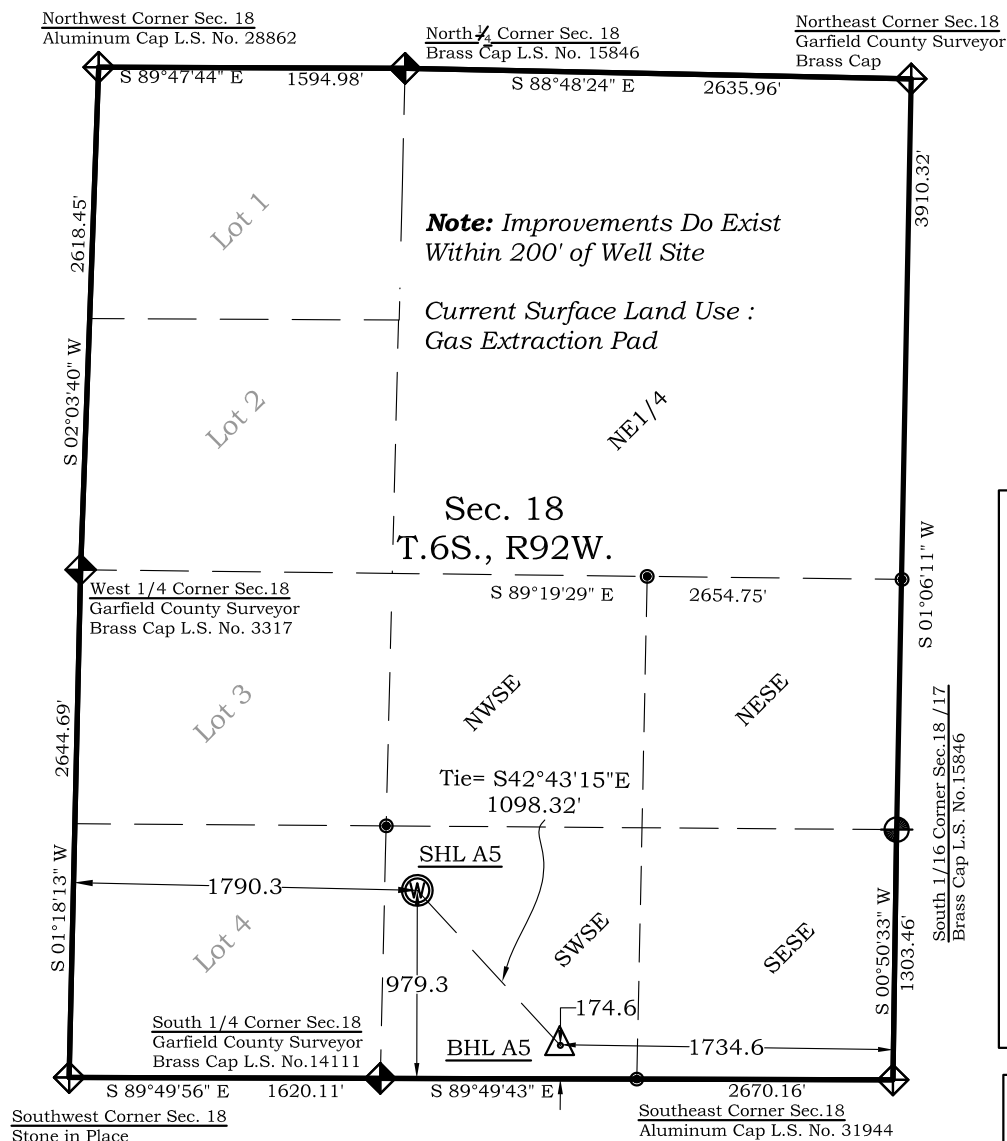


# Well Location Plat

## Dever A5

### Section 18, Township 6 South, Range 92 West



#### Legend

- ◈ - Field Surveyed Section Corner
- ◈ - Field Surveyed Quarter Corner
- ⊙ - Calculated Section Corner Location
- ⊙ - Field Surveyed 1/6 Corner

#### Surface: Dever A5

979' FSL  
 1790' FWL  
 Gnd El= 5572  
 Pad El= 5572  
**NAD83**  
 Lat: 39.522029500°N  
 Long: 107.708720443°W  
**NAD27**  
 Lat: 39.522048990°N  
 Long: 107.708103740°W  
 UTM 13 NORTH  
**NAD 1983**  
 NORTHING  
 14364188.057  
 EASTING  
 876519.766

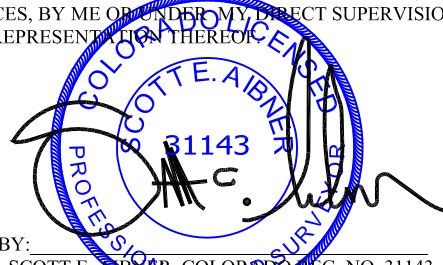
#### Bottom Hole: Dever A5

175' FSL  
 1735' FEL  
**NAD83**  
 Lat: 39.519877415°N  
 Long: 107.705995073°W  
**NAD27**  
 Lat: 39.519896901°N  
 Long: 107.705378500°W

Prepared For Antero Resources  
 Proposed Dever A5 Well Situate in The SW 1/4 SE 1/4 Section  
 18, Township 6 South, Range 92 West of the 6th. Principal  
 Meridian, County of Garfield, State of Colorado

#### SURVEYOR'S CERTIFICATE

I, SCOTT E. AIBNER, A REGISTERED LAND SURVEYOR, LICENSED UNDER THE LAWS  
 OF THE STATE OF COLORADO DO HEREBY CERTIFY THAT THE SURVEY SHOWN  
 HEREON WAS PREPARED BY RIVER VALLEY SURVEY, INC., FOR ANTERO  
 RESOURCES, BY ME OR UNDER MY DIRECT SUPERVISION AND THAT THIS PLAT IS  
 A TRUE REPRESENTATION THEREOF.

BY:   
 SCOTT E. AIBNER, COLORADO REG. NO. 31143

#### Notes:

1. LATITUDE AND LONGITUDE COORDINATES ARE DIFFERENTIALLY CORRECTED AND BASED ON PUBLISHED NGS CONTROL STATION "WDP-5". SYSTEM: UTM ZONE: 13 NORTH DATUM: NAD 1983 (CONUS)
2. ELEVATIONS ARE BASED ON NAVD OF 1983.
3. ALL BOTTOM AND TOP HOLE LOCATIONS ARE MEASURED 90 DEGREES FROM SECTION LINE.
4. USGS QUADRANGLE MAP "SILT".
5. CURRENT SURFACE LAND USE: GAS PAD.
6. PDOP AT THE TIME OF LOCATION OF SURFACE WELL = 3.6



**River Valley Survey, Inc.**  
 110 East 3rd. Street, Suite 213  
 Rifle, Colorado 81650  
 Ph: 970-379-7846

**Project:** Dever A Pad

**File No.** 06001-03A

**Field Date:** 01-25-06

**Scale:** 1"= 1000'

**Date:** 05-29-12

**Sheet:** 1 of 1

**Well Location Plat**  
**Prepared For Antero Resources**

**Situate In:**  
 SW 1/4 SE 1/4 Section 18, T6S., R. 92 W.  
 of the 6th P.M., Garfield County,  
 Colorado

