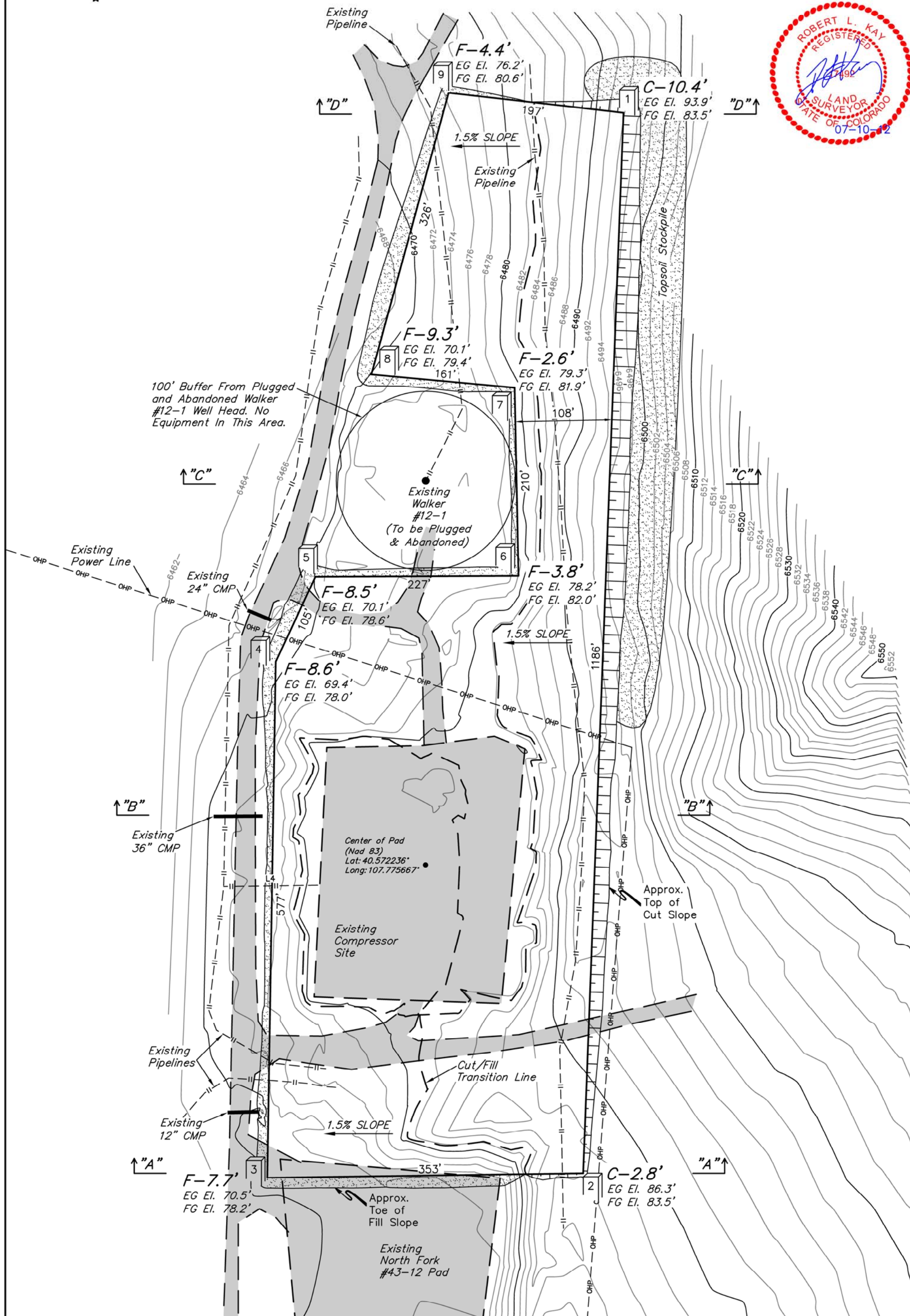


QUICKSILVER RESOURCES, INC.

CONSTRUCTION LAYOUT FOR
LAY CREEK FACILITY
SECTION 12, T7N, R93W, 6th P.M.

FIGURE #1

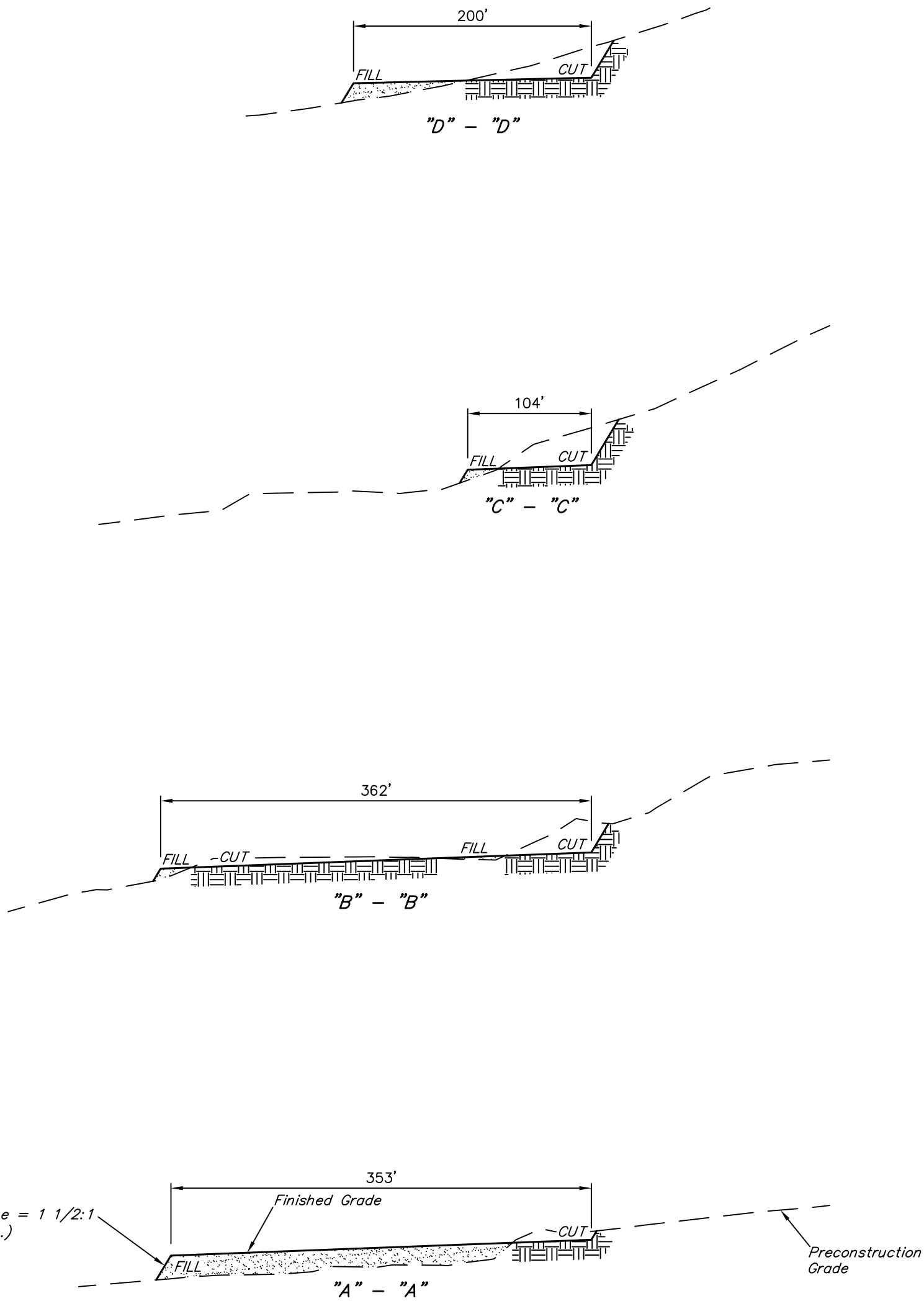
SCALE: 1" = 100'
DATE: 06-25-12
DRAWN BY: J.J.
REVISED: 07-10-12



1" = 40'
X-Section
Scale
1" = 100'
DATE: 06-25-12
DRAWN BY: J.J.

QUICKSILVER RESOURCES, INC.
CONSTRUCTION LAYOUT CROSS SECTIONS FOR
LAY CREEK FACILITY
SECTION 12, T7N, R93W, 6th P.M.

FIGURE #2



* NOTE:
FILL QUANTITY INCLUDES
5% FOR COMPACTION

APPROXIMATE YARDAGES

(6") Topsoil Stripping New Construction Only	= 5,890 Cu. Yds.
Remaining Location	= 29,100 Cu. Yds.
TOTAL CUT	= 34,990 CU. YDS.
FILL	= 29,100 CU. YDS.

EXCESS MATERIAL	= 5,890 Cu. Yds.
Topsoil	= 5,890 Cu. Yds.
EXCESS UNBALANCE (After Interim Rehabilitation)	= 0 Cu. Yds.

APPROXIMATE ACREAGES
WELL SITE DISTURBANCE = ± 9.697 ACRES

UINTAH ENGINEERING & LAND SURVEYING
85 So. 200 East * Vernal, Utah 84078 * (435) 789-1017