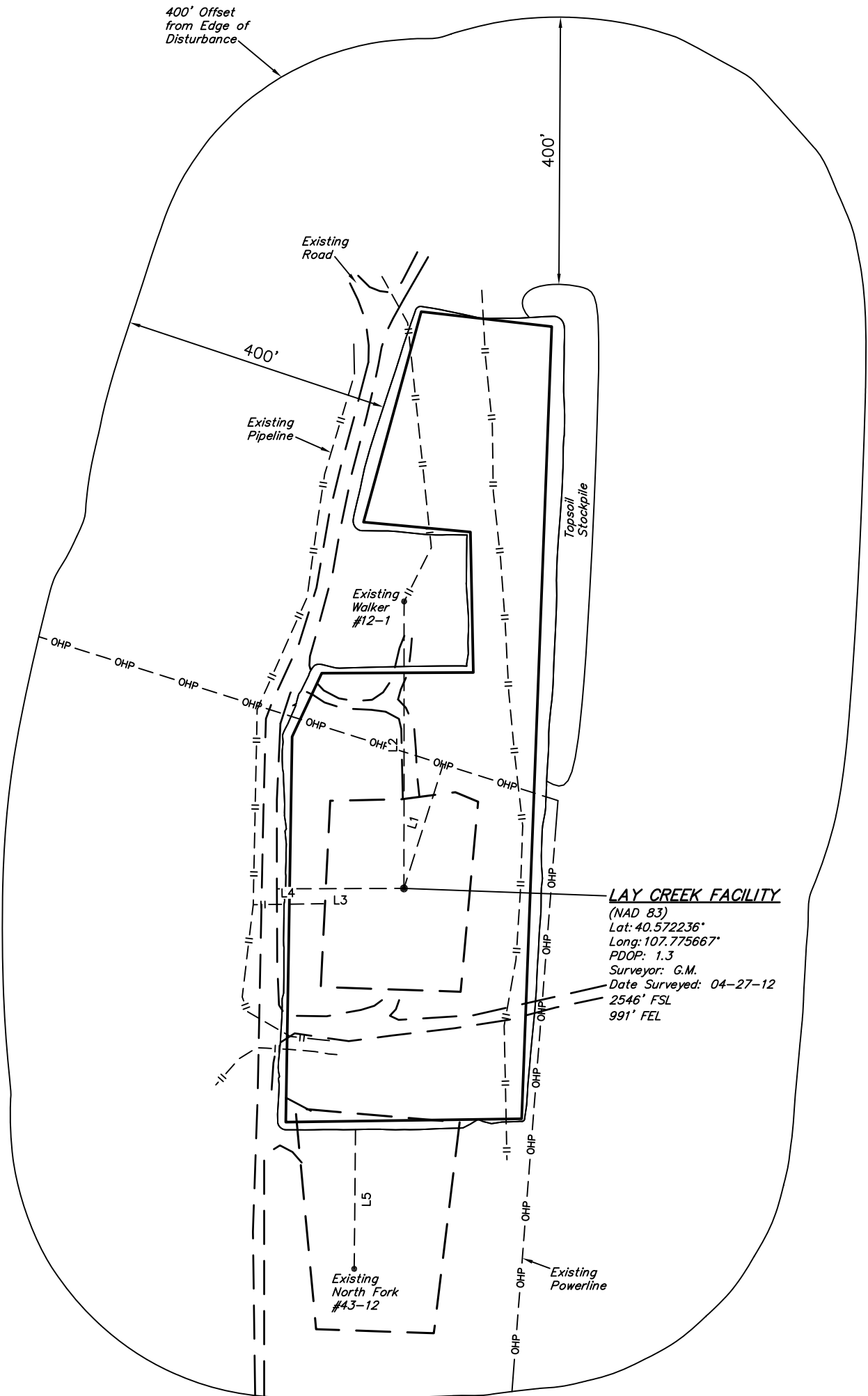




QUICKSILVER RESOURCES, INC.
ADDENDUM TO LOCATION DRAWING FOR
LAY CREEK FACILITY
SECTION 12, T7N, R93W, 6th P.M.

SCALE: 1" = 200'
DATE: 06-25-12
DRAWN BY: J.J.
REVISED: 07-12-12



LAY CREEK FACILITY
(NAD 83)
Lat: 40.572236°
Long: 107.775667°
PDOP: 1.3
Surveyor: G.M.
Date Surveyed: 04-27-12
2546' FSL
991' FEL

LINE TABLE		
LINE	DIRECTION	LENGTH
L1	N18°E	195'
L2	NORTH	429'
L3	WEST	190'
L4	N89°E	105'
L5	S01°W	208'