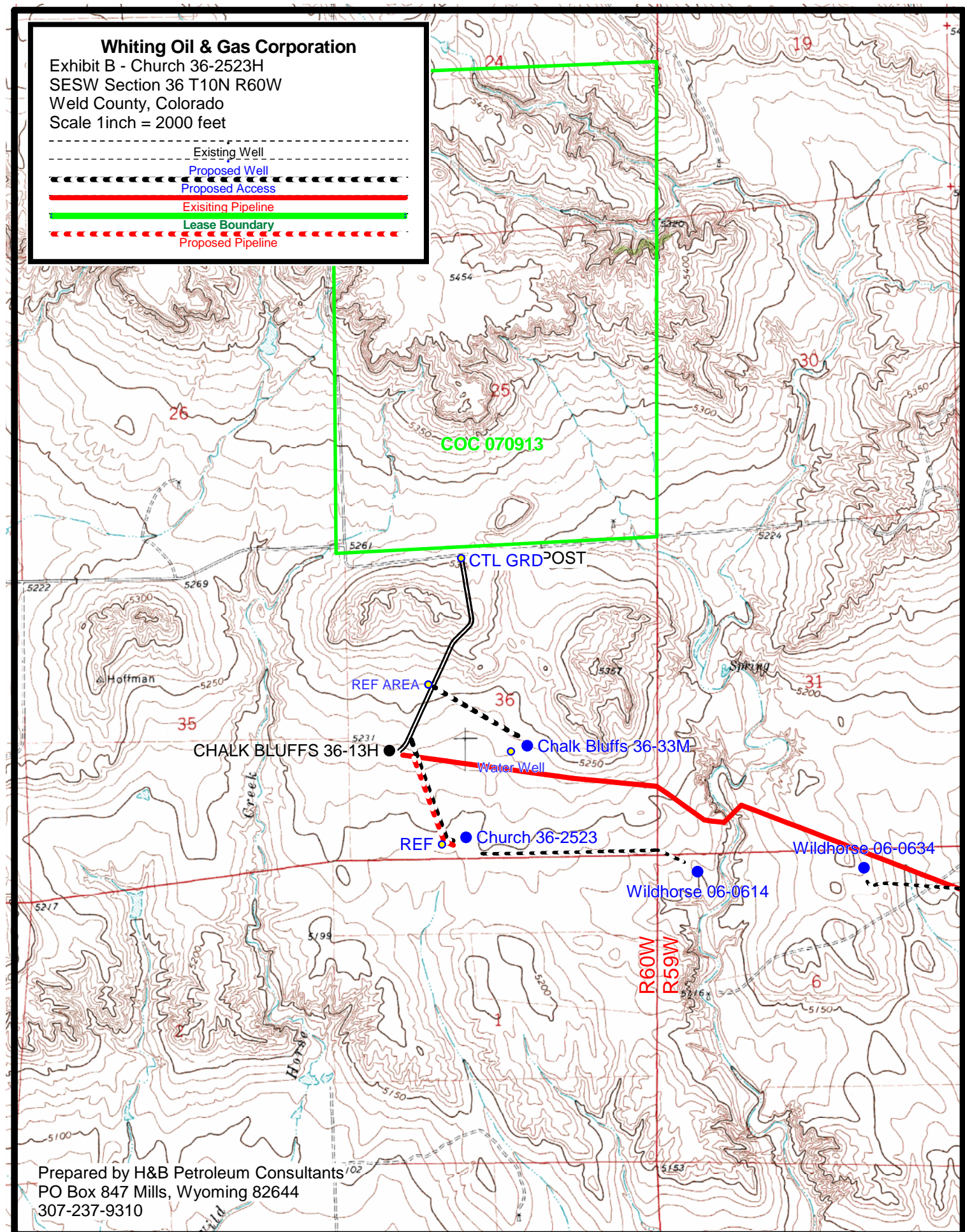


# Whiting Oil & Gas Corporation

Exhibit B - Church 36-2523H  
SESW Section 36 T10N R60W  
Weld County, Colorado  
Scale 1 inch = 2000 feet

- Existing Well
- Proposed Well
- Proposed Access
- Existing Pipeline
- Lease Boundary
- Proposed Pipeline



Prepared by H&B Petroleum Consultants  
PO Box 847 Mills, Wyoming 82644  
307-237-9310