

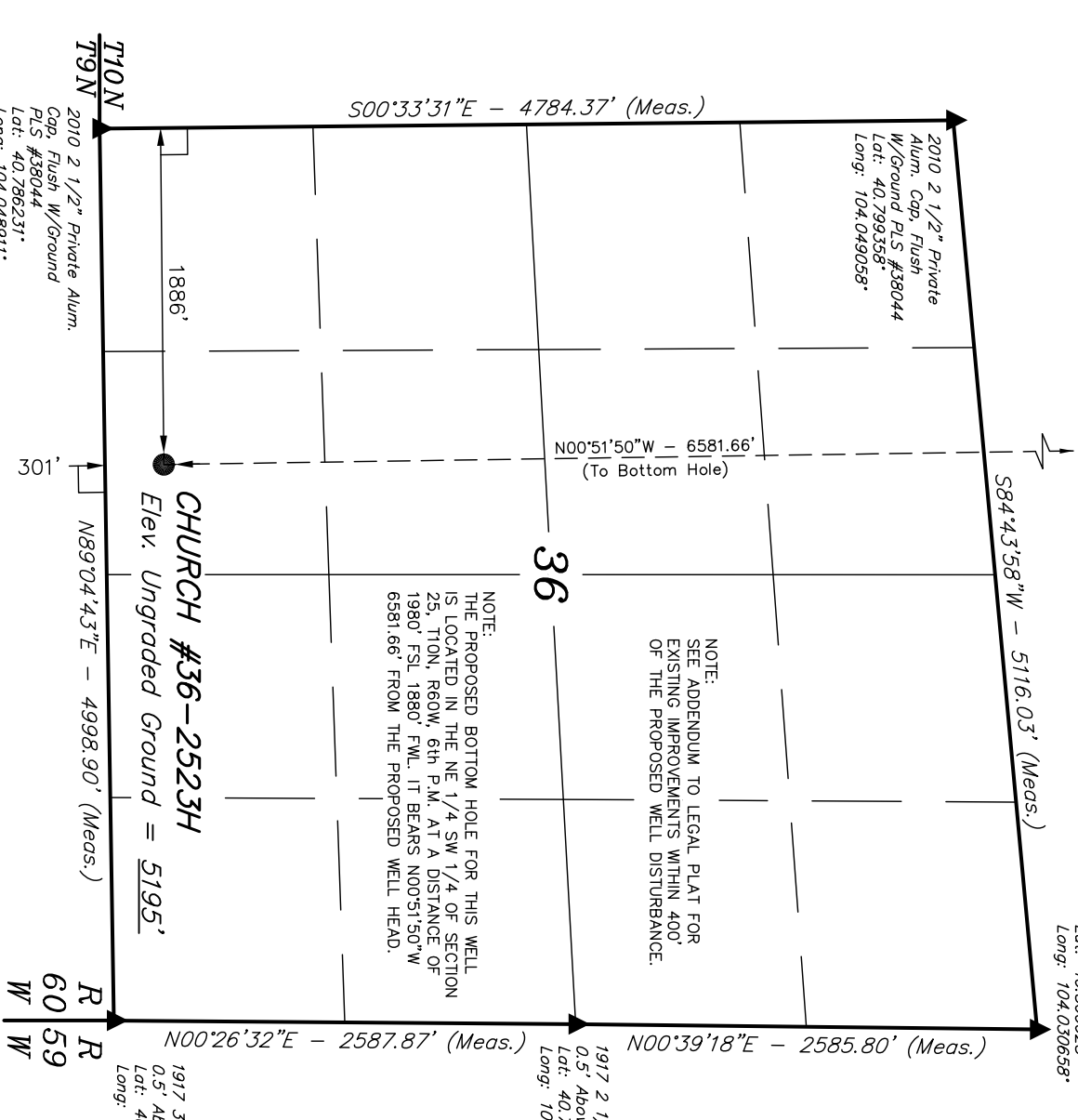
T10N, R60W, 6th. P.M.

2011 2 1/2" Private Alum. Cap, 0.8' Below Ground, RLS #17492
 Lat: 40.800628°
 Long: 104.030658°

WHITTING OIL & GAS CORP.
 Well location, CHURCH #36-2523H, (SURFACE LOCATION) located as shown in the SE 1/4 SW 1/4 of Section 36, T10N, R60W, 6th. P.M., Weld County, Colorado.
BASIS OF ELEVATION

SPOT ELEVATION LOCATED AT THE NORTHEAST CORNER OF SECTION 2, T9N, R61W, 6th P.M. TAKEN FROM THE GROVER SOUTH, QUADRANGLE, COLORADO, WELD COUNTY, 7.5 MINUTE QUAD (TOPOGRAPHIC MAP) PUBLISHED BY THE UNITED STATES DEPARTMENT OF THE INTERIOR, GEOLOGICAL SURVEY. SAID ELEVATION IS MARKED AS BEING 5043 FEET.
BASIS OF BEARINGS

BASIS OF BEARINGS IS A G.P.S. OBSERVATION.

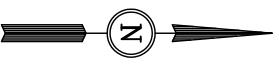
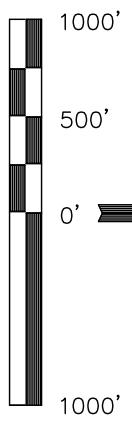


NOTE:
 THE PROPOSED BOTTOM HOLE FOR THIS WELL IS LOCATED IN THE NE 1/4 SW 1/4 OF SECTION 25, T10N, R60W, 6th P.M. AT A DISTANCE OF 1980' FSL 1880' F.W.L. IT BEARS N00°51'50"W 6581.66' FROM THE PROPOSED WELL HEAD.

NOTE:
 SEE ADDENDUM TO LEGAL PLAT FOR EXISTING IMPROVEMENTS WITHIN 400' OF THE PROPOSED WELL DISTURBANCE.

1917 3 1/2" Brass Cap,
 0.5' Above Ground
 Lat: 40.786433°
 Long: 104.030867°

1917 2 1/2" Brass Cap,
 0.5' Above Ground
 Lat: 40.793533°
 Long: 104.030781°



CERTIFICATE

THIS IS TO CERTIFY THAT THE ABOVE PLAT WAS PREPARED FROM FIELD NOTES OF ACTUAL SURVEYS MADE BY ME OR UNDER MY SUPERVISION AND THAT THE SAME ARE TRUE AND CORRECT TO THE BEST OF MY KNOWLEDGE AND BELIEF.

REGISTERED LAND SURVEYOR
 REGISTRATION No. 1492
 STATE OF COLORADO
 09-06-11

UINTAH ENGINEERING & LAND SURVEYING
 85 SOUTH 200 EAST - VERNAL, UTAH 84078
 (435) 789-1017

SCALE	DATE SURVEYED:	DATE DRAWN:
1" = 1000'	06-22-11	07-06-11
PARTY	REFERENCES	
D.N. C.Z. Z.L.	G.I.O. PLAT	
WEATHER	FILE	
WARM	EOG RESOURCES, INC.	

- LEGEND:**
- 90° SYMBOL
 - PROPOSED WELL HEAD.
 - SECTION CORNERS LOCATED.

NAD 83 (SURFACE LOCATION)	
LATITUDE = 40°47'13.97" (40.787214)	
LONGITUDE = 104°02'31.61" (104.042114)	
NAD 27 (SURFACE LOCATION)	
LATITUDE = 40°47'14.02" (40.787228)	
LONGITUDE = 104°02'29.80" (104.041611)	
STATE PLANE NAD 83 COLORADO NORTH	
N: 1532946.90 E: 3403698.92	
STATE PLANE NAD 27 COLORADO NORTH	
N: 5329444.85 E: 2403849.13	

PDOP = 1.8

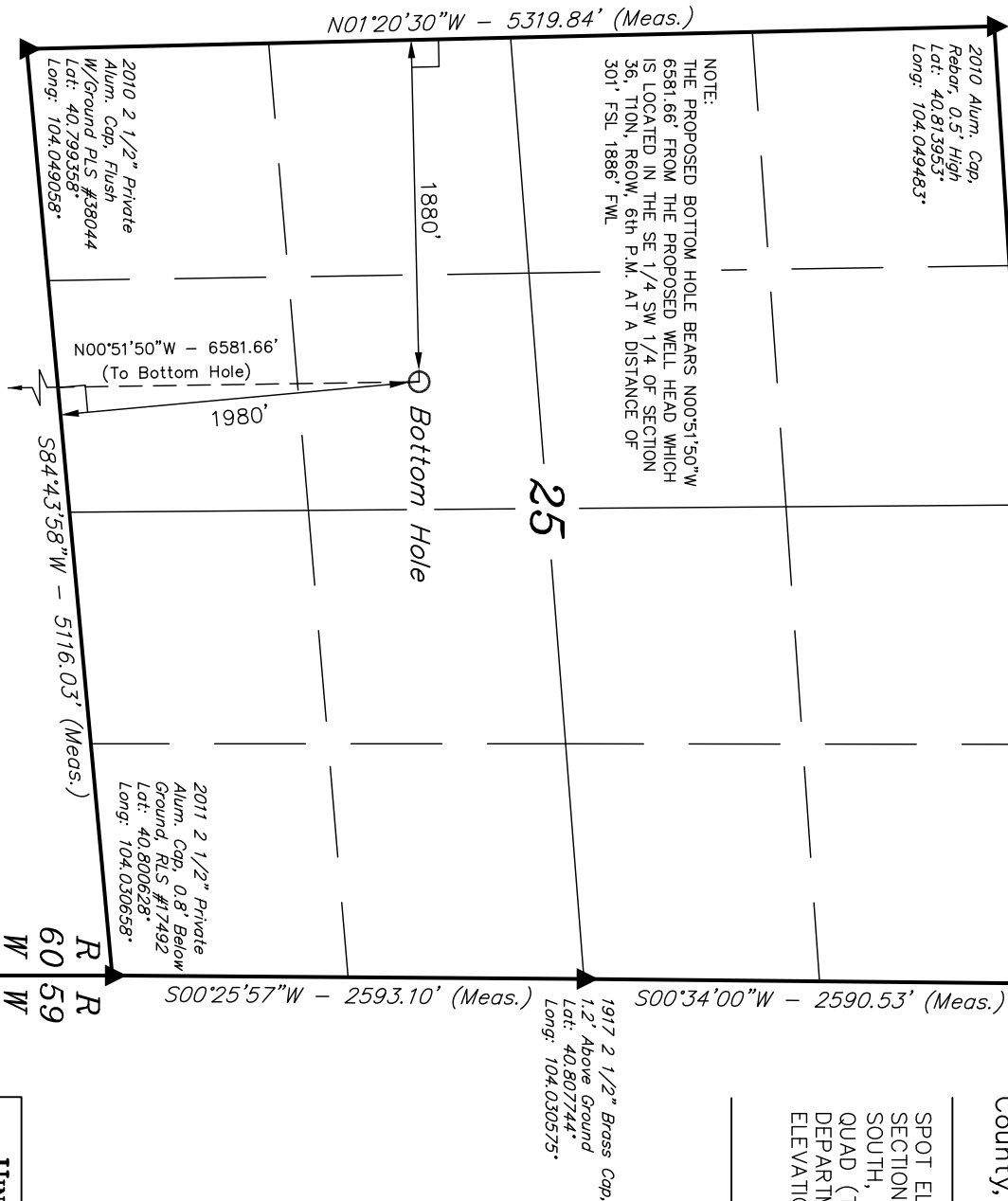
T10N, R60W, 6th. P.M.

2010 UELS Alum.
Cap
Lat: 40.814853°
Long: 104.030467°

S86°21'43"W - 5274.80' (Meas.)

2010 Alum. Cap,
Rebor, 0.5" High
Lat: 40.813953°
Long: 104.049483°

NOTE:
THE PROPOSED BOTTOM HOLE BEARS N00°51'50"W
6581.66' FROM THE PROPOSED WELL HEAD WHICH
IS LOCATED IN THE SE 1/4 SW 1/4 OF SECTION
36, T10N, R60W, 6th P.M. AT A DISTANCE OF
301' FSL 1886' FWL



WHITTING OIL & GAS CORP.

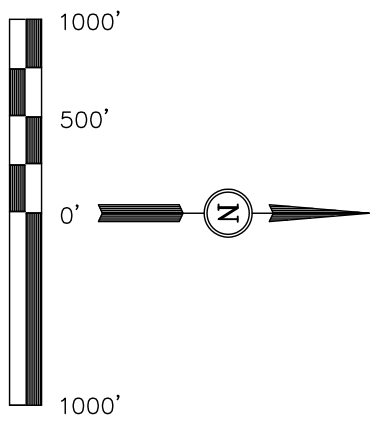
Well location, CHURCH #36-2523H, (BOTTOM HOLE) located as shown in the NE 1/4 SW 1/4 of Section 25, T10N, R60W, 6th. P.M., Weld County, Colorado.

BASIS OF ELEVATION

SPOT ELEVATION LOCATED AT THE NORTHEAST CORNER OF SECTION 2, T9N, R61W, 6th P.M. TAKEN FROM THE GROVER SOUTH, QUADRANGLE, COLORADO, WELD COUNTY, 7.5 MINUTE QUAD (TOPOGRAPHIC MAP) PUBLISHED BY THE UNITED STATES DEPARTMENT OF THE INTERIOR, GEOLOGICAL SURVEY. SAID ELEVATION IS MARKED AS BEING 5043 FEET.

BASIS OF BEARINGS

BASIS OF BEARINGS IS A G.P.S. OBSERVATION.



CERTIFICATE

THIS IS TO CERTIFY THAT THE ABOVE PLAT WAS PREPARED FROM FIELD NOTES OF ACTUAL SURVEYS MADE BY ME OR UNDER MY SUPERVISION AND THAT THE SAME ARE TRUE AND CORRECT TO THE BEST OF MY KNOWLEDGE AND BELIEF.

REGISTERED LAND SURVEYOR
REGISTRATION NO. 1492
STATE OF COLORADO
09-06-11

LEGEND:

- = 90° SYMBOL
- = PROPOSED WELL HEAD.
- ▲ = SECTION CORNERS LOCATED.

PDOP = 1.8

NAD 83 (TARGET BOTTOM HOLE)	Latitude = 40°48'18.98" (40.805272)
	Longitude = 104°02'32.78" (104.042439)
NAD 27 (TARGET BOTTOM HOLE)	Latitude = 40°48'19.03" (40.805286)
	Longitude = 104°02'30.97" (104.041936)
STATE PLANE NAD 83 COLORADO NORTH	N: 1539523.86 E: 3403500.80
STATE PLANE NAD 27 COLORADO NORTH	N: 539521.77 E: 2403650.98

UINTAH ENGINEERING & LAND SURVEYING	
85 SOUTH 200 EAST - VERNAL, UTAH 84078	
(435) 789-1017	
SCALE	DATE SURVEYED: 06-22-11
1" = 1000'	DATE DRAWN: 07-06-11
PARTY	REFERENCES
D.N. C.Z. Z.L.	G.I.O. PLAT
WEATHER	FILE
WARM	EOG RESOURCES, INC.