

**HALLIBURTON**

---

**WPX ENERGY ROCKY MOUNTAIN LLC-EBUS**

---

KP 421-17  
KOKOPELLI  
Garfield County , Colorado

**Cement Surface Casing**

24-Jan-2012

**Post Job Report**

The Road to Excellence Starts with Safety

Sold To #: 300721	Ship To #: 2901730	Quote #:	Sales Order #: 9198142
Customer: WPX ENERGY ROCKY MOUNTAIN LLC-EBUS		Customer Rep: Hutson, Matt	
Well Name: KP	Well #: 421-17	API/UWI #: 05-045-20985	
Field: KOKOPELLI	City (SAP): SILT	County/Parish: Garfield	State: Colorado
Lat: N 39.536 deg. OR N 39 deg. 32 min. 7.847 secs.		Long: W 107.58 deg. OR W -108 deg. 25 min. 13.015 secs.	
Contractor: NABORS 574	Rig/Platform Name/Num: NABORS 574		
Job Purpose: Cement Surface Casing			
Well Type: Development Well		Job Type: Cement Surface Casing	
Sales Person: MAYO, MARK	Srvc Supervisor: KUKUS, CRAIG	MBU ID Emp #: 369124	

Job Personnel

HES Emp Name	Exp Hrs	Emp #	HES Emp Name	Exp Hrs	Emp #	HES Emp Name	Exp Hrs	Emp #
BRENNECKE, ANDREW Bailey	6	486345	KUKUS, CRAIG A	6	369124	LINN, PAUL Andrew	6	479143
MILLER II, MATTHEW Reginald	6	425164						

Equipment

HES Unit #	Distance-1 way	HES Unit #	Distance-1 way	HES Unit #	Distance-1 way	HES Unit #	Distance-1 way
10871245	60 mile	11021972	60 mile	11027039	60 mile	11259883	60 mile
11360881	60 mile						

Job Hours

Date	On Location Hours	Operating Hours	Date	On Location Hours	Operating Hours	Date	On Location Hours	Operating Hours
1/24/12	6	3						

TOTAL Total is the sum of each column separately

Job

Job Times

Formation Name	Formation Depth (MD)	Form Type	Job depth MD	Water Depth	Perforation Depth (MD)	Date	Time	Time Zone
	Top Bottom	BHST	1310. m	Wk Ht Above Floor 4. m	From To	Called Out	24 - Jan - 2012 07:00	MST
						On Location	24 - Jan - 2012 11:00	MST
						Job Started	24 - Jan - 2012 15:49	MST
						Job Completed	24 - Jan - 2012 16:42	MST
						Departed Loc	24 - Jan - 2012 17:45	MST

Well Data

Description	New / Used	Max pressure MPa	Size mm	ID mm	Weight kg/m	Thread	Grade	Top MD m	Bottom MD m	Top TVD m	Bottom TVD m

Sales/Rental/3<sup>rd</sup> Party (HES)

Description	Qty	Qty uom	Depth	Supplier
PLUG,CMTG, TOP,9 5/8,HWE,8.16 MIN/9.06 MA	1	EA		

Tools and Accessories

Type	Size	Qty	Make	Depth	Type	Size	Qty	Make	Depth	Type	Size	Qty	Make
Guide Shoe					Packer					Top Plug	9 5/8	1	HES
Float Shoe					Bridge Plug					Bottom Plug			
Float Collar					Retainer					SSR plug set			
Insert Float										Plug Container	9 5/8	1	HES
Stage Tool										Centralizers			

Miscellaneous Materials

Gelling Agt	Conc	Surfactant	Conc	Acid Type	Qty	Conc %
Treatment Fld	Conc	Inhibitor	Conc	Sand Type	Size	Qty

Fluid Data

Stage/Plug #: 1										
Fluid #	Stage Type	Fluid Name	Qty	Qty uom	Mixing Density kg/m3	Yield m3/sk	Mix Fluid m3/tonne	Rate BBL/MI N	Total Mix Fluid m3/tonne	

Stage/Plug #: 1									
Fluid #	Stage Type	Fluid Name	Qty	Qty uom	Mixing Density lb/gal	Yield m3/sk	Mix Fluid m3/tonne	Rate bbl/min	Total Mix Fluid gal/sks
1	Fresh Water		20.00	bbl	8.33	.0	.0	4	
2	Lead Cement	VERSACEM (TM) SYSTEM (452010)	180.0	sacks	12.3	2.38	13.75	7	13.75
3	Tail Cement	VERSACEM (TM) SYSTEM (452010)	160.0	sacks	12.8	2.11	11.75	7	11.75
4	Displacement Fluid		98.00	bbl	8.34	.0	.0	10	
Calculated Values		Pressures		Volumes					
Displacement	98.4	Shut In: Instant		Lost Returns	0	Cement Slurry	136.5	Pad	
Top Of Cement	SURFACE	5 Min		Cement Returns	12	Actual Displacement	98	Treatment	
Frac Gradient		15 Min		Spacers	20	Load and Breakdown		Total Job	255
Rates									
Circulating RIG		Mixing	7	Displacement	10	Avg. Job			8.5
Cement Left In Pipe	Amount	43.48 ft	Reason	Shoe Joint					
Frac Ring # 1 @	ID	Frac ring # 2 @	ID	Frac Ring # 3 @	ID	Frac Ring # 4 @	ID		
The Information Stated Herein Is Correct				Customer Representative Signature					

*The Road to Excellence Starts with Safety*

Sold To #: 300721	Ship To #: 2901730	Quote #:	Sales Order #: 9198142
Customer: WPX ENERGY ROCKY MOUNTAIN LLC-EBUS		Customer Rep: Hutson, Matt	
Well Name: KP	Well #: 421-17	API/UWI #: 05-045-20985	
Field: KOKOPELLI	City (SAP): SILT	County/Parish: Garfield	State: Colorado
Legal Description:			
Lat: N 39.536 deg. OR N 39 deg. 32 min. 7.847 secs.		Long: W 107.58 deg. OR W -108 deg. 25 min. 13.015 secs.	
Contractor: NABORS 574		Rig/Platform Name/Num: NABORS 574	
Job Purpose: Cement Surface Casing			Ticket Amount:
Well Type: Development Well		Job Type: Cement Surface Casing	
Sales Person: MAYO, MARK		Srvc Supervisor: KUKUS, CRAIG	
		MBU ID Emp #: 369124	

Activity Description	Date/Time	Cht #	Rate Bbl/min	Volume m3		Pressure		Comments
				Stage	Total	Tubing	Casing	
Call Out	01/24/2012 07:00							
Depart Yard Safety Meeting	01/24/2012 08:30							SAFETY MEETING INVOLVING THE ENTIRE CMT CREW
Arrive At Loc	01/24/2012 11:00							RIG RUNNING CSG
Assessment Of Location Safety Meeting	01/24/2012 11:05							ASSESSMENT OF LOCATION INVOLVING THE ENTIRE CMT CREW
Pre-Rig Up Safety Meeting	01/24/2012 11:15							SAFETY MEETING INVOLVING THE ENTIRE CMT CREW
Rig-Up Equipment	01/24/2012 11:20							RIG UP IRO TO STAND PIPE / WATER RIGGED UP TO UP RIGHT AND DAY TANK
Circulate Well	01/24/2012 14:30							RIG CIRCULATE WELL
Pre-Job Safety Meeting	01/24/2012 15:30							SAFETY MEETING INVOLVING EVERYONE ON LOCATION
Start Job	01/24/2012 15:49							TD 1310 FT TP 1294 FT SJ 43.48 FT OH 13.5 IN PIPE 9 5/8 IN 32.3# MUD WT 9.7#
Other	01/24/2012 15:50		2	2			38.0	FILL LINES WITH FRESH WATER
Pressure Test	01/24/2012 15:52		0.5			3500.0		PRESSURE TEST GOOD
Pump Spacer 1	01/24/2012 15:56		4	20			117.0	FRESH WATER SPACER
Activity Description	Date/Time	Cht	Rate m3/min	Volume m3		Pressure MPa		Comments

Sold To #: 300721

Ship To #: 2901730

Quote # :

Sales Order # :

9198142

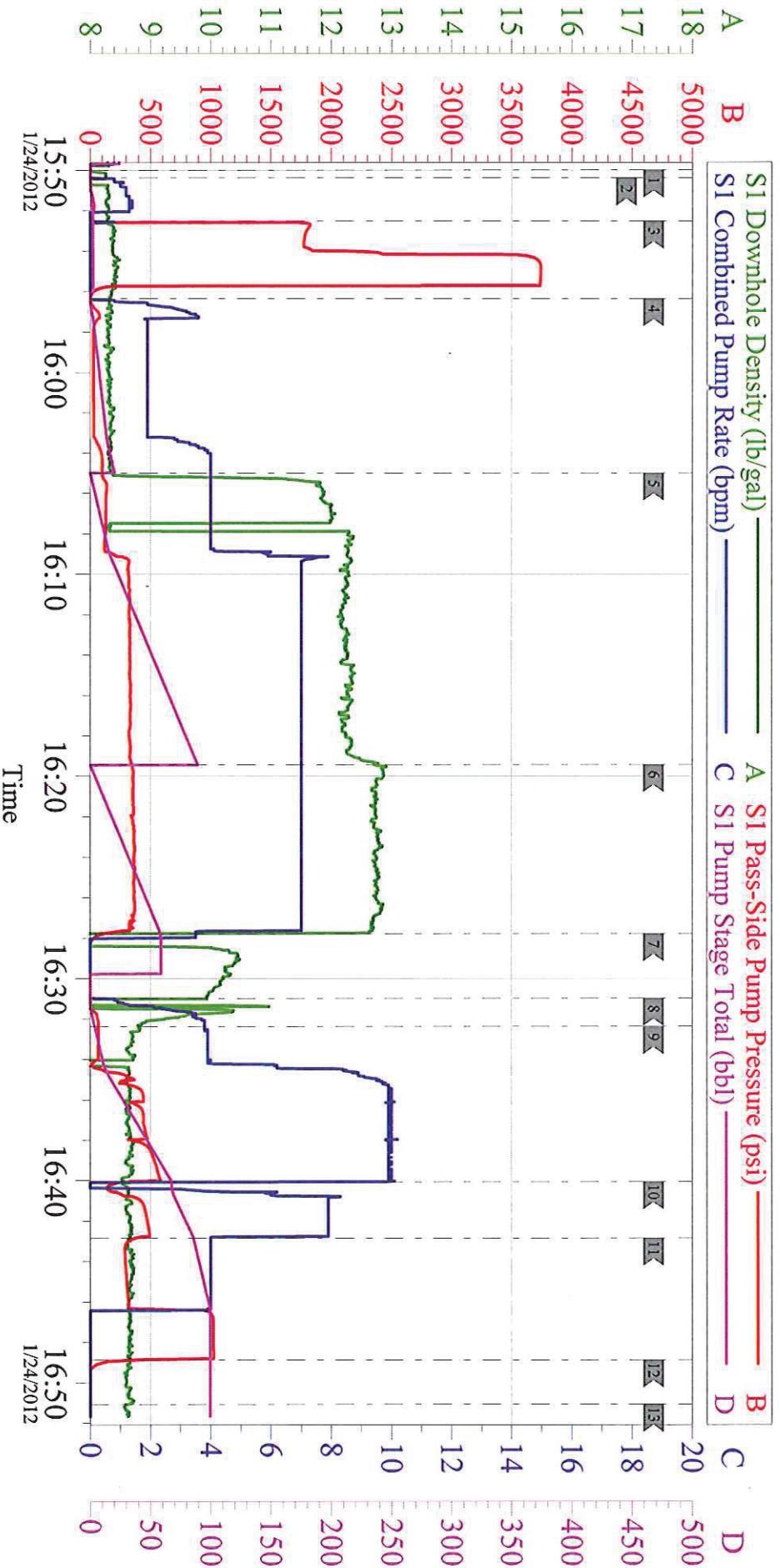
SUMMIT Version: 7.3.013

Saturday, January 28, 2012 12:42:00

		#	Stage	Total	Tubing	Casing	
Pump Lead Cement	01/24/2012 16:05		7	76.3		367.0	PUMP 180 SKS LEAD CEMENT AT 12.3 PPG 2.38 Y 13/75 GAL/SKS
Pump Tail Cement	01/24/2012 16:19		7	60.1		390.0	PUMP 160 SKS TAIL CEMENT AT 12.8 PPG 2.11 Y 11.75 GAL/SKS
Shutdown	01/24/2012 16:27						READY TUB TO WASH UP ON TOP OF PLUG
Drop Top Plug	01/24/2012 16:27						PLUG LEFT THE PLUG CONTAINER
Pump Displacement	01/24/2012 16:30		10	98.4		550.0	PUMP H20 DISPLACEMENT 8.33#
Slow Rate	01/24/2012 16:40		4	88		336.0	SLOW RATE TO 4 BBL MIN LAST 10 BBLS
Bump Plug	01/24/2012 16:42		4	98.4		1037.0	PLUG LANDED AT 367 PSI
Check Floats	01/24/2012 16:48						FLOATS HELD / GOT 1 BBL BACK TO TANKS / HAD GOOD RETURNS THRU OUT THE JOB AND GOT CEMENT TO SURFACE TOTAL 12 BBLS CEMENT
End Job	01/24/2012 16:51						
Pre-Rig Down Safety Meeting	01/24/2012 16:55						SAFETY MEETING INVOLVING THE ENTIRE CMT CREW
Rig-Down Equipment	01/24/2012 17:05						
Safety Meeting - Departing Location	01/24/2012 17:35						SAFETY MEETING INVOLVING THE ENTIRE CMT CREW
Comment	01/24/2012 17:45						THANK YOU FOR USING HALLIBURTON, CRAIG KUKUS AND CREW

# WPX ENERGY ROCKY MOUNTAINS KP 421-17

## SURFACE 9 5/8 NABORS 574



### Local Event Log

1	START JOB	15:49:59	2	PRIME LINES	15:50:23	3	PRESSURE TEST LINES	15:52:30
4	PUMP H2O SPACER	15:56:21	5	PUMP LEAD CEMENT	16:05:00	6	PUMP TAIL CEMENT	16:19:25
7	SHUT DOWN / DROP PLUG	16:27:47	8	PUMP H2O DISPLACEMENT	16:30:59	9	SLOW RATE	16:32:22
10	SLOW RATE	16:40:04	11	BUMP PLUG	16:42:51	12	CHECK FLOATS	16:48:52
13	END JOB	16:51:04						

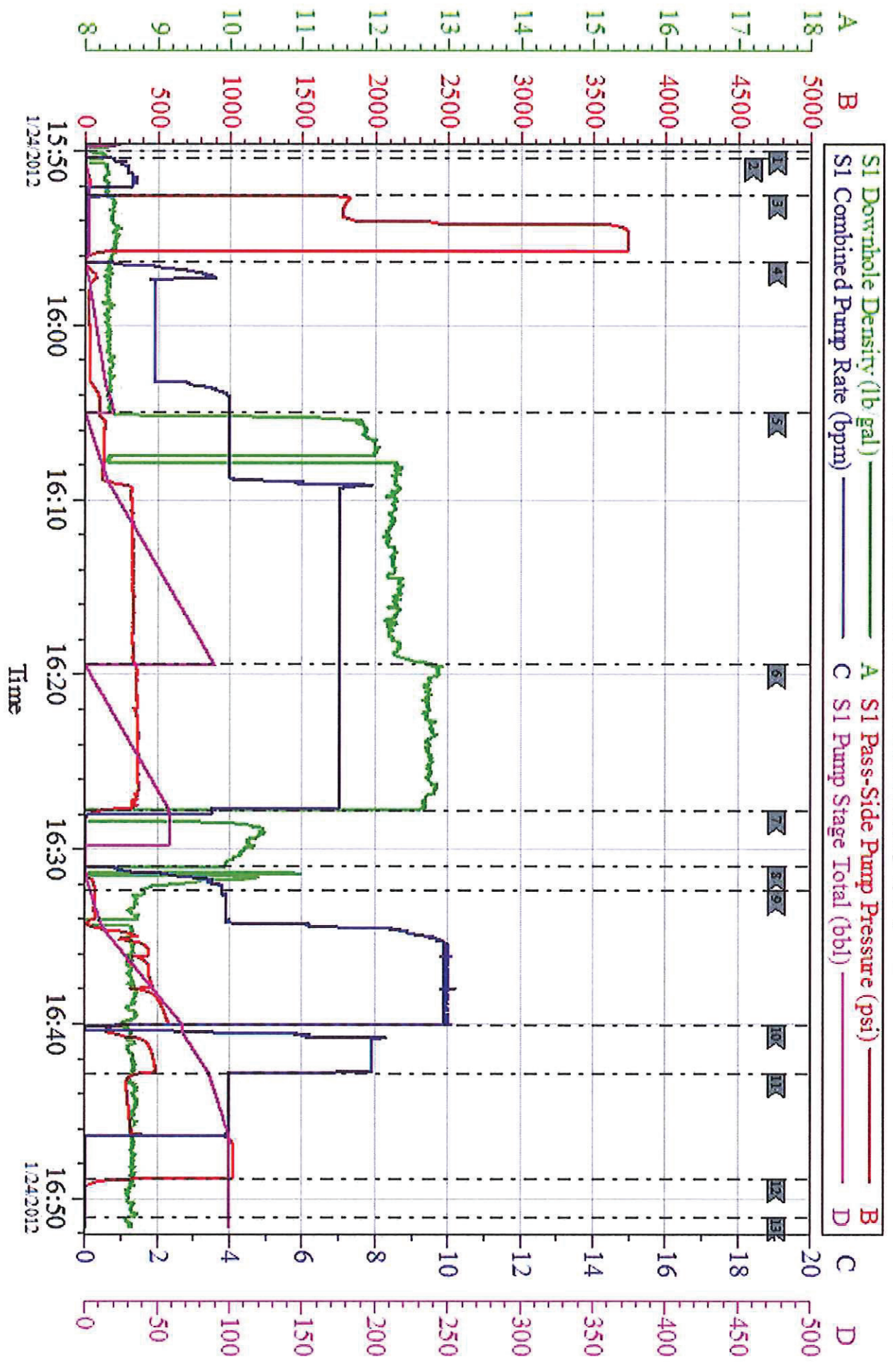
Customer: **WPX ENERGY**  
 Well Description: **KP 421-17**  
 Company Rep: **MATT HUTSON**

Job Date: **24-Jan-2012**  
 Job Type: **SURFACE**  
 Cement Supervisor: **CRAIG KUKUS**

Sales Order #: **9198142**  
 ADC Used: **YES**  
 Elite #/Operator: **E 8 REGGIE MILLER**

# WPX ENERGY ROCKY MOUNTAINS KP 421-17

## SURFACE 9 5/8 NABORS 574



<p>Customer: <b>WPX ENERGY</b></p> <p>Well Description: <b>KP 421-17</b></p> <p>Company Rep: <b>MATT HUTSON</b></p>	<p>Job Date: <b>24-Jan-2012</b></p> <p>Job Type: <b>SURFACE</b></p> <p>Cement Supervisor: <b>CRAIG KUKUS</b></p>
<p>Sales Order #: <b>9198142</b></p> <p>ADC Used: <b>YES</b></p> <p>Elite #/Operator: <b>E 8 REGGIE MILLER</b></p>	