

EnCana Oil & Gas Inc.

Well Pad (J25W)
SEC. 25, T7S, R93W, 6th P.M.



Tri-State
 Land Surveying Inc.
 (435) 781-2501
 180 North Vernal Ave. Vernal, Utah 84078

SCALE: 1 = 100,000
DRAWN BY: bgm
DATE: 09-15-2005

Legend

Existing Road

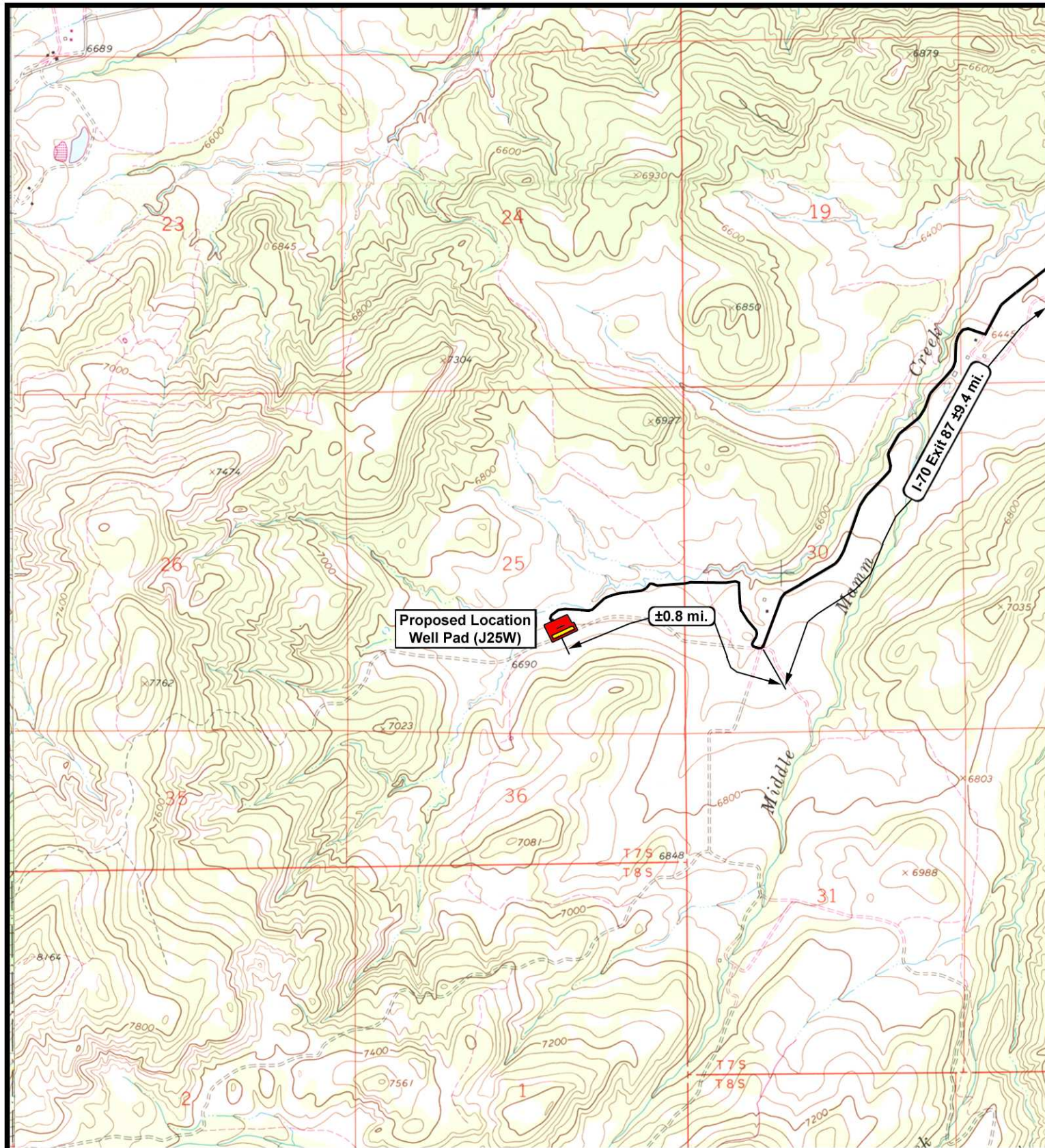
TOPOGRAPHIC MAP

"A"

SHEET

9

OF 11



EnCana Oil & Gas Inc.

Well Pad (J25W)
SEC. 25, T7S, R93W, 6th P.M.



Tri-State
Land Surveying Inc.
 (435) 781-2501
 180 North Vernal Ave. Vernal, Utah 84078

SCALE: 1" = 2,000'
DRAWN BY: bgm
DATE: 09-15-2005

Legend

Existing Road
 Proposed Access

TOPOGRAPHIC MAP

"B"

SHEET

10
 OF 11