

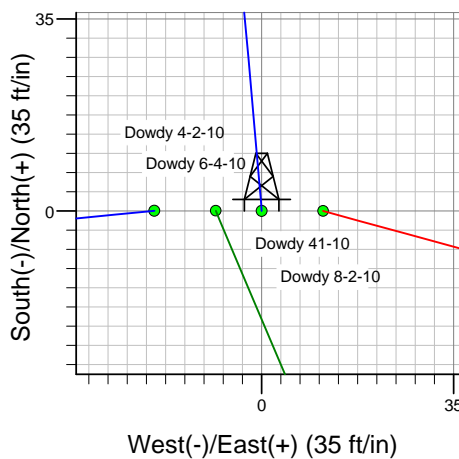
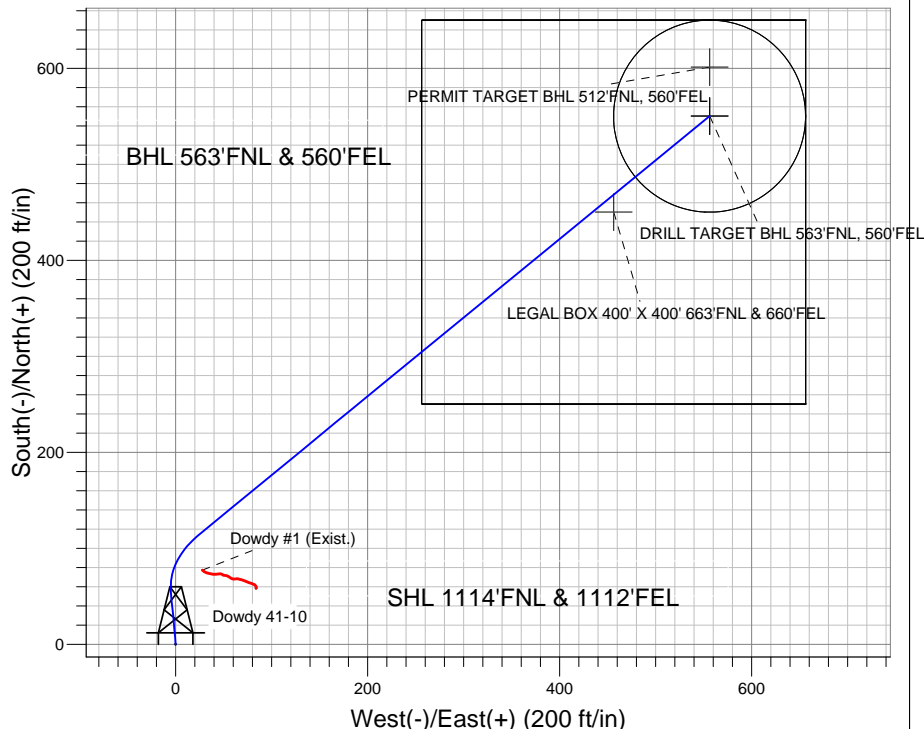
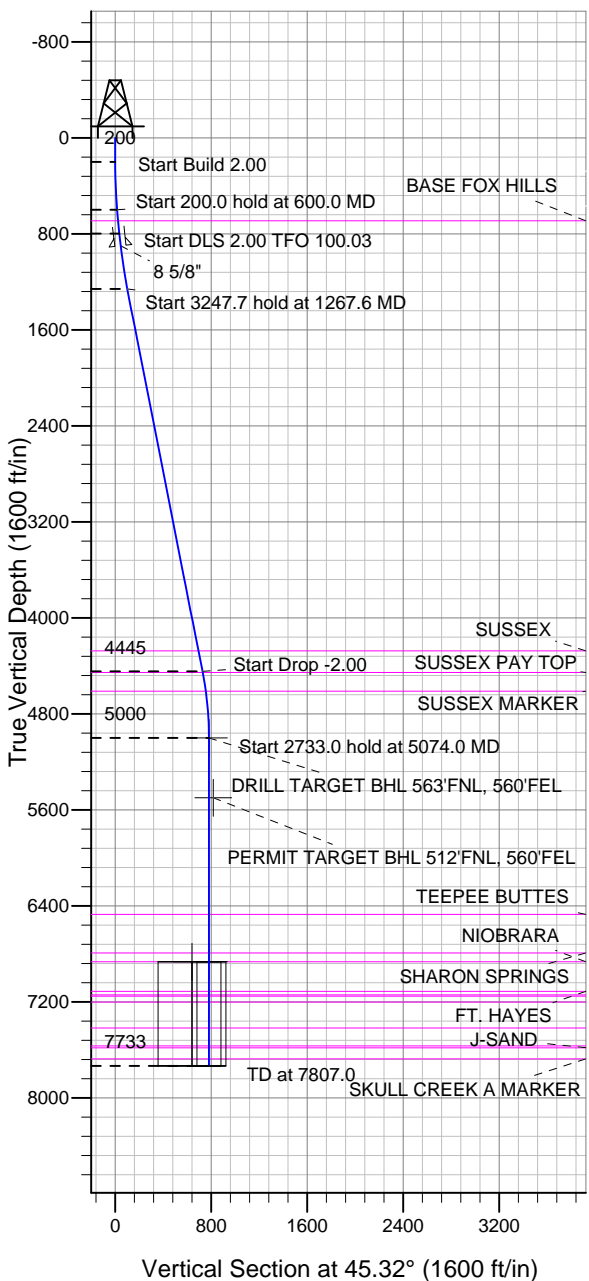
ENSIGN

Directional

Well Name: Dowdy 41-10

Surface Location: Dowdy 4-2-10 Pad Sec.10-T2N-R65W
 North American Datum 1983 US State Plane 1983 Colorado Northern Zone
 Ground Elevation: 4858.0
 +N/-S +E/-W Northing Easting Latitude Longitude Slot
 0.0 0.0 1301352.18 3239128.36 40.157440 -104.644450
 Original Well Elev WELL @ 4870.0ft (Original Well Elev)

EnCana Oil & Gas Weld County CO



Dowdy 4-2-10 Pad Sec.10-T2N-R65W
 Dowdy 41-10
 Plan #2 (7-20-12)
 10:07, July 23 2012



Azimuths to True North
 Magnetic North: 8.63°

Magnetic Field
 Strength: 52900.0nT
 Dip Angle: 66.84°
 Date: 7/23/2012
 Model: IGRF2010

WELLBORE TARGET DETAILS (LAT/LONG)

Name	TVD	+N/-S	+E/-W	Latitude	Longitude	Shape
DRILL TARGET BHL 563'FNL, 560'FEL	5000.0	550.1	556.2	40.158950	-104.642460	Point
PERMIT TARGET BHL 512'FNL, 560'FEL	5500.0	601.1	556.2	40.159090	-104.642460	Point
LEGAL BOX 400' X 400' 663'FNL & 660'FEL	6865.0	450.1	456.2	40.158675	-104.642818	Rectangle (Sides: L400.0 W400.0)
TARGET CIRCLE 563'FNL & 560'FEL	6865.0	550.1	556.2	40.158950	-104.642460	Circle (Radius: 100.0)

SECTION DETAILS

Sec	MD	Inc	Azi	TVD	+N/-S	+E/-W	DLeg	TFace	VSec	Target
1	0.0	0.00	0.00	0.0	0.0	0.0	0.00	0.00	0.0	
2	200.0	0.00	0.00	200.0	0.0	0.0	0.00	0.00	0.0	
3	600.0	8.00	355.00	598.7	27.8	-2.4	2.00	355.00	17.8	
4	800.0	8.00	355.00	796.8	55.5	-4.9	0.00	0.00	35.6	
5	1267.6	11.17	50.67	1258.7	116.8	27.4	2.00	100.03	101.6	
6	4515.3	11.17	50.67	4444.9	515.7	514.2	0.00	0.00	728.2	
7	5074.0	0.00	0.00	5000.0	550.1	556.2	2.00	180.00	782.3	DRILL TARGET BHL 563'FNL, 560'FEL
8	7807.0	0.00	0.00	7733.0	550.1	556.2	0.00	0.00	782.3	



Directional

EnCana Oil & Gas Weld County CO

SEC.10-T2N-R65W

Dowdy 4-2-10 Pad Sec.10-T2N-R65W

Dowdy 41-10

Wellbore #1

Plan: Plan #2 (7-20-12)

Standard Planning Report

23 July, 2012

Database:	Landmark	Local Co-ordinate Reference:	Well Dowdy 41-10
Company:	EnCana Oil & Gas Weld County CO	TVD Reference:	WELL @ 4870.0ft (Original Well Elev)
Project:	SEC.10-T2N-R65W	MD Reference:	WELL @ 4870.0ft (Original Well Elev)
Site:	Dowdy 4-2-10 Pad Sec.10-T2N-R65W	North Reference:	True
Well:	Dowdy 41-10	Survey Calculation Method:	Minimum Curvature
Wellbore:	Wellbore #1		
Design:	Plan #2 (7-20-12)		

Project	SEC.10-T2N-R65W, Weld County, Colorado		
Map System:	US State Plane 1983	System Datum:	Mean Sea Level
Geo Datum:	North American Datum 1983		Using Well Reference Point
Map Zone:	Colorado Northern Zone		Using geodetic scale factor

Site Dowdy 4-2-10 Pad Sec.10-T2N-R65W					
Site Position:		Northing:	1,301,352.02 ft	Latitude:	40.157440
From:	Lat/Long	Easting:	3,239,108.79 ft	Longitude:	-104.644520
Position Uncertainty:	0.0 ft	Slot Radius:	"	Grid Convergence:	0.55 °

Well	Dowdy 41-10					
Well Position	+N/-S	0.0 ft	Northing:	1,301,352.18 ft	Latitude:	40.157440
	+E/-W	19.6 ft	Easting:	3,239,128.36 ft	Longitude:	-104.644450
Position Uncertainty		0.0 ft	Wellhead Elevation:	ft	Ground Level:	4,858.0 ft

Wellbore	Wellbore #1				
Magnetics	Model Name	Sample Date	Declination (°)	Dip Angle (°)	Field Strength (nT)
	IGRF2010	7/23/2012	8.63	66.84	52,900

Design	Plan #2 (7-20-12)			
Audit Notes:				
Version:	Phase:	PROTOTYPE	Tie On Depth:	0.0
Vertical Section:	Depth From (TVD) (ft)	+N/-S (ft)	+E/-W (ft)	Direction (°)
	0.0	0.0	0.0	45.32

Plan Sections										
Measured Depth (ft)	Inclination (°)	Azimuth (°)	Vertical Depth (ft)	+N/-S (ft)	+E/-W (ft)	Dogleg Rate (°/100ft)	Build Rate (°/100ft)	Turn Rate (°/100ft)	TFO (°)	Target
0.0	0.00	0.00	0.0	0.0	0.0	0.00	0.00	0.00	0.00	
200.0	0.00	0.00	200.0	0.0	0.0	0.00	0.00	0.00	0.00	
600.0	8.00	355.00	598.7	27.8	-2.4	2.00	2.00	0.00	355.00	
800.0	8.00	355.00	796.8	55.5	-4.9	0.00	0.00	0.00	0.00	
1,267.6	11.17	50.67	1,258.7	116.8	27.4	2.00	0.68	11.90	100.03	
4,515.3	11.17	50.67	4,444.9	515.7	514.2	0.00	0.00	0.00	0.00	
5,074.0	0.00	0.00	5,000.0	550.1	556.2	2.00	-2.00	0.00	180.00	DRILL TARGET BH
7,807.0	0.00	0.00	7,733.0	550.1	556.2	0.00	0.00	0.00	0.00	

Database:	Landmark	Local Co-ordinate Reference:	Well Dowdy 41-10
Company:	EnCana Oil & Gas Weld County CO	TVD Reference:	WELL @ 4870.0ft (Original Well Elev)
Project:	SEC.10-T2N-R65W	MD Reference:	WELL @ 4870.0ft (Original Well Elev)
Site:	Dowdy 4-2-10 Pad Sec.10-T2N-R65W	North Reference:	True
Well:	Dowdy 41-10	Survey Calculation Method:	Minimum Curvature
Wellbore:	Wellbore #1		
Design:	Plan #2 (7-20-12)		

Planned Survey									
Measured Depth (ft)	Inclination (°)	Azimuth (°)	Vertical Depth (ft)	+N/-S (ft)	+E/-W (ft)	Vertical Section (ft)	Dogleg Rate (°/100ft)	Build Rate (°/100ft)	Turn Rate (°/100ft)
0.0	0.00	0.00	0.0	0.0	0.0	0.0	0.00	0.00	0.00
40.0	0.00	0.00	40.0	0.0	0.0	0.0	0.00	0.00	0.00
80.0	0.00	0.00	80.0	0.0	0.0	0.0	0.00	0.00	0.00
120.0	0.00	0.00	120.0	0.0	0.0	0.0	0.00	0.00	0.00
160.0	0.00	0.00	160.0	0.0	0.0	0.0	0.00	0.00	0.00
200.0	0.00	0.00	200.0	0.0	0.0	0.0	0.00	0.00	0.00
240.0	0.80	355.00	240.0	0.3	0.0	0.2	2.00	2.00	0.00
280.0	1.60	355.00	280.0	1.1	-0.1	0.7	2.00	2.00	0.00
320.0	2.40	355.00	320.0	2.5	-0.2	1.6	2.00	2.00	0.00
360.0	3.20	355.00	359.9	4.4	-0.4	2.9	2.00	2.00	0.00
400.0	4.00	355.00	399.8	7.0	-0.6	4.5	2.00	2.00	0.00
440.0	4.80	355.00	439.7	10.0	-0.9	6.4	2.00	2.00	0.00
480.0	5.60	355.00	479.6	13.6	-1.2	8.7	2.00	2.00	0.00
520.0	6.40	355.00	519.3	17.8	-1.6	11.4	2.00	2.00	0.00
560.0	7.20	355.00	559.1	22.5	-2.0	14.4	2.00	2.00	0.00
600.0	8.00	355.00	598.7	27.8	-2.4	17.8	2.00	2.00	0.00
640.0	8.00	355.00	638.3	33.3	-2.9	21.4	0.00	0.00	0.00
680.0	8.00	355.00	677.9	38.9	-3.4	24.9	0.00	0.00	0.00
694.2	8.00	355.00	692.0	40.8	-3.6	26.2	0.00	0.00	0.00
BASE FOX HILLS									
720.0	8.00	355.00	717.5	44.4	-3.9	28.5	0.00	0.00	0.00
760.0	8.00	355.00	757.1	50.0	-4.4	32.0	0.00	0.00	0.00
800.0	8.00	355.00	796.8	55.5	-4.9	35.6	0.00	0.00	0.00
840.0	7.90	0.74	836.4	61.0	-5.1	39.3	2.00	-0.25	14.35
880.0	7.88	6.57	876.0	66.5	-4.7	43.4	2.00	-0.05	14.57
904.2	7.91	10.09	900.0	69.8	-4.2	46.1	2.00	0.11	14.54
8 5/8"									
920.0	7.94	12.37	915.6	71.9	-3.8	47.9	2.00	0.21	14.43
960.0	8.08	18.03	955.2	77.3	-2.3	52.7	2.00	0.35	14.14
1,000.0	8.29	23.44	994.8	82.6	-0.3	57.9	2.00	0.53	13.54
1,040.0	8.57	28.55	1,034.4	87.9	2.2	63.4	2.00	0.71	12.76
1,080.0	8.92	33.30	1,073.9	93.1	5.4	69.3	2.00	0.86	11.87
1,120.0	9.32	37.67	1,113.4	98.2	9.1	75.5	2.00	1.00	10.93
1,160.0	9.77	41.66	1,152.9	103.3	13.3	82.1	2.00	1.12	9.98
1,200.0	10.26	45.29	1,192.3	108.4	18.1	89.1	2.00	1.23	9.07
1,240.0	10.79	48.58	1,231.6	113.4	23.4	96.4	2.00	1.32	8.22
1,267.6	11.17	50.67	1,258.7	116.8	27.4	101.6	2.00	1.39	7.56
1,280.0	11.17	50.67	1,270.8	118.3	29.3	104.0	0.00	0.00	0.00
1,320.0	11.17	50.67	1,310.1	123.2	35.3	111.7	0.00	0.00	0.00
1,360.0	11.17	50.67	1,349.3	128.1	41.3	119.4	0.00	0.00	0.00
1,400.0	11.17	50.67	1,388.6	133.0	47.3	127.2	0.00	0.00	0.00
1,440.0	11.17	50.67	1,427.8	137.9	53.3	134.9	0.00	0.00	0.00
1,480.0	11.17	50.67	1,467.0	142.9	59.3	142.6	0.00	0.00	0.00
1,520.0	11.17	50.67	1,506.3	147.8	65.3	150.3	0.00	0.00	0.00
1,560.0	11.17	50.67	1,545.5	152.7	71.2	158.0	0.00	0.00	0.00
1,600.0	11.17	50.67	1,584.8	157.6	77.2	165.7	0.00	0.00	0.00
1,640.0	11.17	50.67	1,624.0	162.5	83.2	173.5	0.00	0.00	0.00
1,680.0	11.17	50.67	1,663.3	167.4	89.2	181.2	0.00	0.00	0.00
1,720.0	11.17	50.67	1,702.5	172.3	95.2	188.9	0.00	0.00	0.00
1,760.0	11.17	50.67	1,741.7	177.3	101.2	196.6	0.00	0.00	0.00
1,800.0	11.17	50.67	1,781.0	182.2	107.2	204.3	0.00	0.00	0.00
1,840.0	11.17	50.67	1,820.2	187.1	113.2	212.0	0.00	0.00	0.00
1,880.0	11.17	50.67	1,859.5	192.0	119.2	219.8	0.00	0.00	0.00
1,920.0	11.17	50.67	1,898.7	196.9	125.2	227.5	0.00	0.00	0.00

Database:	Landmark	Local Co-ordinate Reference:	Well Dowdy 41-10
Company:	EnCana Oil & Gas Weld County CO	TVD Reference:	WELL @ 4870.0ft (Original Well Elev)
Project:	SEC.10-T2N-R65W	MD Reference:	WELL @ 4870.0ft (Original Well Elev)
Site:	Dowdy 4-2-10 Pad Sec.10-T2N-R65W	North Reference:	True
Well:	Dowdy 41-10	Survey Calculation Method:	Minimum Curvature
Wellbore:	Wellbore #1		
Design:	Plan #2 (7-20-12)		

Planned Survey									
Measured Depth (ft)	Inclination (°)	Azimuth (°)	Vertical Depth (ft)	+N/-S (ft)	+E/-W (ft)	Vertical Section (ft)	Dogleg Rate (°/100ft)	Build Rate (°/100ft)	Turn Rate (°/100ft)
1,960.0	11.17	50.67	1,937.9	201.8	131.2	235.2	0.00	0.00	0.00
2,000.0	11.17	50.67	1,977.2	206.7	137.2	242.9	0.00	0.00	0.00
2,040.0	11.17	50.67	2,016.4	211.6	143.2	250.6	0.00	0.00	0.00
2,080.0	11.17	50.67	2,055.7	216.6	149.2	258.4	0.00	0.00	0.00
2,120.0	11.17	50.67	2,094.9	221.5	155.2	266.1	0.00	0.00	0.00
2,160.0	11.17	50.67	2,134.2	226.4	161.2	273.8	0.00	0.00	0.00
2,200.0	11.17	50.67	2,173.4	231.3	167.2	281.5	0.00	0.00	0.00
2,240.0	11.17	50.67	2,212.6	236.2	173.2	289.2	0.00	0.00	0.00
2,280.0	11.17	50.67	2,251.9	241.1	179.2	296.9	0.00	0.00	0.00
2,320.0	11.17	50.67	2,291.1	246.0	185.2	304.7	0.00	0.00	0.00
2,360.0	11.17	50.67	2,330.4	250.9	191.2	312.4	0.00	0.00	0.00
2,400.0	11.17	50.67	2,369.6	255.9	197.1	320.1	0.00	0.00	0.00
2,440.0	11.17	50.67	2,408.9	260.8	203.1	327.8	0.00	0.00	0.00
2,480.0	11.17	50.67	2,448.1	265.7	209.1	335.5	0.00	0.00	0.00
2,520.0	11.17	50.67	2,487.3	270.6	215.1	343.2	0.00	0.00	0.00
2,560.0	11.17	50.67	2,526.6	275.5	221.1	351.0	0.00	0.00	0.00
2,600.0	11.17	50.67	2,565.8	280.4	227.1	358.7	0.00	0.00	0.00
2,640.0	11.17	50.67	2,605.1	285.3	233.1	366.4	0.00	0.00	0.00
2,680.0	11.17	50.67	2,644.3	290.3	239.1	374.1	0.00	0.00	0.00
2,720.0	11.17	50.67	2,683.5	295.2	245.1	381.8	0.00	0.00	0.00
2,760.0	11.17	50.67	2,722.8	300.1	251.1	389.5	0.00	0.00	0.00
2,800.0	11.17	50.67	2,762.0	305.0	257.1	397.3	0.00	0.00	0.00
2,840.0	11.17	50.67	2,801.3	309.9	263.1	405.0	0.00	0.00	0.00
2,880.0	11.17	50.67	2,840.5	314.8	269.1	412.7	0.00	0.00	0.00
2,920.0	11.17	50.67	2,879.8	319.7	275.1	420.4	0.00	0.00	0.00
2,960.0	11.17	50.67	2,919.0	324.6	281.1	428.1	0.00	0.00	0.00
3,000.0	11.17	50.67	2,958.2	329.6	287.1	435.9	0.00	0.00	0.00
3,040.0	11.17	50.67	2,997.5	334.5	293.1	443.6	0.00	0.00	0.00
3,080.0	11.17	50.67	3,036.7	339.4	299.1	451.3	0.00	0.00	0.00
3,120.0	11.17	50.67	3,076.0	344.3	305.1	459.0	0.00	0.00	0.00
3,160.0	11.17	50.67	3,115.2	349.2	311.1	466.7	0.00	0.00	0.00
3,200.0	11.17	50.67	3,154.4	354.1	317.1	474.4	0.00	0.00	0.00
3,240.0	11.17	50.67	3,193.7	359.0	323.0	482.2	0.00	0.00	0.00
3,280.0	11.17	50.67	3,232.9	363.9	329.0	489.9	0.00	0.00	0.00
3,320.0	11.17	50.67	3,272.2	368.9	335.0	497.6	0.00	0.00	0.00
3,360.0	11.17	50.67	3,311.4	373.8	341.0	505.3	0.00	0.00	0.00
3,400.0	11.17	50.67	3,350.7	378.7	347.0	513.0	0.00	0.00	0.00
3,440.0	11.17	50.67	3,389.9	383.6	353.0	520.7	0.00	0.00	0.00
3,480.0	11.17	50.67	3,429.1	388.5	359.0	528.5	0.00	0.00	0.00
3,520.0	11.17	50.67	3,468.4	393.4	365.0	536.2	0.00	0.00	0.00
3,560.0	11.17	50.67	3,507.6	398.3	371.0	543.9	0.00	0.00	0.00
3,600.0	11.17	50.67	3,546.9	403.3	377.0	551.6	0.00	0.00	0.00
3,640.0	11.17	50.67	3,586.1	408.2	383.0	559.3	0.00	0.00	0.00
3,680.0	11.17	50.67	3,625.3	413.1	389.0	567.1	0.00	0.00	0.00
3,720.0	11.17	50.67	3,664.6	418.0	395.0	574.8	0.00	0.00	0.00
3,760.0	11.17	50.67	3,703.8	422.9	401.0	582.5	0.00	0.00	0.00
3,800.0	11.17	50.67	3,743.1	427.8	407.0	590.2	0.00	0.00	0.00
3,840.0	11.17	50.67	3,782.3	432.7	413.0	597.9	0.00	0.00	0.00
3,880.0	11.17	50.67	3,821.6	437.6	419.0	605.6	0.00	0.00	0.00
3,920.0	11.17	50.67	3,860.8	442.6	425.0	613.4	0.00	0.00	0.00
3,960.0	11.17	50.67	3,900.0	447.5	431.0	621.1	0.00	0.00	0.00
4,000.0	11.17	50.67	3,939.3	452.4	437.0	628.8	0.00	0.00	0.00
4,040.0	11.17	50.67	3,978.5	457.3	443.0	636.5	0.00	0.00	0.00
4,080.0	11.17	50.67	4,017.8	462.2	448.9	644.2	0.00	0.00	0.00

Database:	Landmark	Local Co-ordinate Reference:	Well Dowdy 41-10
Company:	EnCana Oil & Gas Weld County CO	TVD Reference:	WELL @ 4870.0ft (Original Well Elev)
Project:	SEC.10-T2N-R65W	MD Reference:	WELL @ 4870.0ft (Original Well Elev)
Site:	Dowdy 4-2-10 Pad Sec.10-T2N-R65W	North Reference:	True
Well:	Dowdy 41-10	Survey Calculation Method:	Minimum Curvature
Wellbore:	Wellbore #1		
Design:	Plan #2 (7-20-12)		

Planned Survey									
Measured Depth (ft)	Inclination (°)	Azimuth (°)	Vertical Depth (ft)	+N/-S (ft)	+E/-W (ft)	Vertical Section (ft)	Dogleg Rate (°/100ft)	Build Rate (°/100ft)	Turn Rate (°/100ft)
4,120.0	11.17	50.67	4,057.0	467.1	454.9	651.9	0.00	0.00	0.00
4,160.0	11.17	50.67	4,096.2	472.0	460.9	659.7	0.00	0.00	0.00
4,200.0	11.17	50.67	4,135.5	477.0	466.9	667.4	0.00	0.00	0.00
4,240.0	11.17	50.67	4,174.7	481.9	472.9	675.1	0.00	0.00	0.00
4,280.0	11.17	50.67	4,214.0	486.8	478.9	682.8	0.00	0.00	0.00
4,320.0	11.17	50.67	4,253.2	491.7	484.9	690.5	0.00	0.00	0.00
4,343.2	11.17	50.67	4,276.0	494.5	488.4	695.0	0.00	0.00	0.00
SUSSEX									
4,360.0	11.17	50.67	4,292.5	496.6	490.9	698.2	0.00	0.00	0.00
4,400.0	11.17	50.67	4,331.7	501.5	496.9	706.0	0.00	0.00	0.00
4,440.0	11.17	50.67	4,370.9	506.4	502.9	713.7	0.00	0.00	0.00
4,480.0	11.17	50.67	4,410.2	511.3	508.9	721.4	0.00	0.00	0.00
4,515.3	11.17	50.67	4,444.9	515.7	514.2	728.2	0.00	0.00	0.00
4,520.0	11.08	50.67	4,449.4	516.3	514.9	729.1	2.00	-2.00	0.00
4,524.7	10.99	50.67	4,454.0	516.8	515.6	730.0	2.00	-2.00	0.00
SUSSEX PAY TOP									
4,560.0	10.28	50.67	4,488.7	521.0	520.6	736.5	2.00	-2.00	0.00
4,600.0	9.48	50.67	4,528.1	525.3	525.9	743.3	2.00	-2.00	0.00
4,640.0	8.68	50.67	4,567.6	529.3	530.8	749.6	2.00	-2.00	0.00
4,680.0	7.88	50.67	4,607.2	533.0	535.3	755.4	2.00	-2.00	0.00
4,683.8	7.80	50.67	4,611.0	533.3	535.7	755.9	2.00	-2.00	0.00
SUSSEX MARKER									
4,720.0	7.08	50.67	4,646.9	536.3	539.3	760.5	2.00	-2.00	0.00
4,760.0	6.28	50.67	4,686.6	539.2	542.9	765.2	2.00	-2.00	0.00
4,800.0	5.48	50.67	4,726.4	541.8	546.1	769.2	2.00	-2.00	0.00
4,840.0	4.68	50.67	4,766.2	544.0	548.8	772.8	2.00	-2.00	0.00
4,880.0	3.88	50.67	4,806.1	545.9	551.1	775.7	2.00	-2.00	0.00
4,920.0	3.08	50.67	4,846.1	547.5	553.0	778.2	2.00	-2.00	0.00
4,960.0	2.28	50.67	4,886.0	548.7	554.4	780.0	2.00	-2.00	0.00
5,000.0	1.48	50.67	4,926.0	549.5	555.5	781.3	2.00	-2.00	0.00
5,040.0	0.68	50.67	4,966.0	550.0	556.0	782.1	2.00	-2.00	0.00
5,074.0	0.00	0.00	5,000.0	550.1	556.2	782.3	2.00	-2.00	0.00
5,080.0	0.00	0.00	5,006.0	550.1	556.2	782.3	0.00	0.00	0.00
5,120.0	0.00	0.00	5,046.0	550.1	556.2	782.3	0.00	0.00	0.00
5,160.0	0.00	0.00	5,086.0	550.1	556.2	782.3	0.00	0.00	0.00
5,200.0	0.00	0.00	5,126.0	550.1	556.2	782.3	0.00	0.00	0.00
5,240.0	0.00	0.00	5,166.0	550.1	556.2	782.3	0.00	0.00	0.00
5,280.0	0.00	0.00	5,206.0	550.1	556.2	782.3	0.00	0.00	0.00
5,320.0	0.00	0.00	5,246.0	550.1	556.2	782.3	0.00	0.00	0.00
5,360.0	0.00	0.00	5,286.0	550.1	556.2	782.3	0.00	0.00	0.00
5,400.0	0.00	0.00	5,326.0	550.1	556.2	782.3	0.00	0.00	0.00
5,440.0	0.00	0.00	5,366.0	550.1	556.2	782.3	0.00	0.00	0.00
5,480.0	0.00	0.00	5,406.0	550.1	556.2	782.3	0.00	0.00	0.00
5,520.0	0.00	0.00	5,446.0	550.1	556.2	782.3	0.00	0.00	0.00
5,560.0	0.00	0.00	5,486.0	550.1	556.2	782.3	0.00	0.00	0.00
5,600.0	0.00	0.00	5,526.0	550.1	556.2	782.3	0.00	0.00	0.00
5,640.0	0.00	0.00	5,566.0	550.1	556.2	782.3	0.00	0.00	0.00
5,680.0	0.00	0.00	5,606.0	550.1	556.2	782.3	0.00	0.00	0.00
5,720.0	0.00	0.00	5,646.0	550.1	556.2	782.3	0.00	0.00	0.00
5,760.0	0.00	0.00	5,686.0	550.1	556.2	782.3	0.00	0.00	0.00
5,800.0	0.00	0.00	5,726.0	550.1	556.2	782.3	0.00	0.00	0.00
5,840.0	0.00	0.00	5,766.0	550.1	556.2	782.3	0.00	0.00	0.00
5,880.0	0.00	0.00	5,806.0	550.1	556.2	782.3	0.00	0.00	0.00

Database:	Landmark	Local Co-ordinate Reference:	Well Dowdy 41-10
Company:	EnCana Oil & Gas Weld County CO	TVD Reference:	WELL @ 4870.0ft (Original Well Elev)
Project:	SEC.10-T2N-R65W	MD Reference:	WELL @ 4870.0ft (Original Well Elev)
Site:	Dowdy 4-2-10 Pad Sec.10-T2N-R65W	North Reference:	True
Well:	Dowdy 41-10	Survey Calculation Method:	Minimum Curvature
Wellbore:	Wellbore #1		
Design:	Plan #2 (7-20-12)		

Planned Survey									
Measured Depth (ft)	Inclination (°)	Azimuth (°)	Vertical Depth (ft)	+N/-S (ft)	+E/-W (ft)	Vertical Section (ft)	Dogleg Rate (°/100ft)	Build Rate (°/100ft)	Turn Rate (°/100ft)
5,920.0	0.00	0.00	5,846.0	550.1	556.2	782.3	0.00	0.00	0.00
5,960.0	0.00	0.00	5,886.0	550.1	556.2	782.3	0.00	0.00	0.00
6,000.0	0.00	0.00	5,926.0	550.1	556.2	782.3	0.00	0.00	0.00
6,040.0	0.00	0.00	5,966.0	550.1	556.2	782.3	0.00	0.00	0.00
6,080.0	0.00	0.00	6,006.0	550.1	556.2	782.3	0.00	0.00	0.00
6,120.0	0.00	0.00	6,046.0	550.1	556.2	782.3	0.00	0.00	0.00
6,160.0	0.00	0.00	6,086.0	550.1	556.2	782.3	0.00	0.00	0.00
6,200.0	0.00	0.00	6,126.0	550.1	556.2	782.3	0.00	0.00	0.00
6,240.0	0.00	0.00	6,166.0	550.1	556.2	782.3	0.00	0.00	0.00
6,280.0	0.00	0.00	6,206.0	550.1	556.2	782.3	0.00	0.00	0.00
6,320.0	0.00	0.00	6,246.0	550.1	556.2	782.3	0.00	0.00	0.00
6,360.0	0.00	0.00	6,286.0	550.1	556.2	782.3	0.00	0.00	0.00
6,400.0	0.00	0.00	6,326.0	550.1	556.2	782.3	0.00	0.00	0.00
6,440.0	0.00	0.00	6,366.0	550.1	556.2	782.3	0.00	0.00	0.00
6,480.0	0.00	0.00	6,406.0	550.1	556.2	782.3	0.00	0.00	0.00
6,520.0	0.00	0.00	6,446.0	550.1	556.2	782.3	0.00	0.00	0.00
6,544.0	0.00	0.00	6,470.0	550.1	556.2	782.3	0.00	0.00	0.00
TEEPEE BUTTES									
6,560.0	0.00	0.00	6,486.0	550.1	556.2	782.3	0.00	0.00	0.00
6,600.0	0.00	0.00	6,526.0	550.1	556.2	782.3	0.00	0.00	0.00
6,640.0	0.00	0.00	6,566.0	550.1	556.2	782.3	0.00	0.00	0.00
6,680.0	0.00	0.00	6,606.0	550.1	556.2	782.3	0.00	0.00	0.00
6,720.0	0.00	0.00	6,646.0	550.1	556.2	782.3	0.00	0.00	0.00
6,760.0	0.00	0.00	6,686.0	550.1	556.2	782.3	0.00	0.00	0.00
6,800.0	0.00	0.00	6,726.0	550.1	556.2	782.3	0.00	0.00	0.00
6,840.0	0.00	0.00	6,766.0	550.1	556.2	782.3	0.00	0.00	0.00
6,866.0	0.00	0.00	6,792.0	550.1	556.2	782.3	0.00	0.00	0.00
SHARON SPRINGS									
6,880.0	0.00	0.00	6,806.0	550.1	556.2	782.3	0.00	0.00	0.00
6,920.0	0.00	0.00	6,846.0	550.1	556.2	782.3	0.00	0.00	0.00
6,939.0	0.00	0.00	6,865.0	550.1	556.2	782.3	0.00	0.00	0.00
NIOBRARA									
6,960.0	0.00	0.00	6,886.0	550.1	556.2	782.3	0.00	0.00	0.00
7,000.0	0.00	0.00	6,926.0	550.1	556.2	782.3	0.00	0.00	0.00
7,040.0	0.00	0.00	6,966.0	550.1	556.2	782.3	0.00	0.00	0.00
7,080.0	0.00	0.00	7,006.0	550.1	556.2	782.3	0.00	0.00	0.00
7,120.0	0.00	0.00	7,046.0	550.1	556.2	782.3	0.00	0.00	0.00
7,160.0	0.00	0.00	7,086.0	550.1	556.2	782.3	0.00	0.00	0.00
7,186.0	0.00	0.00	7,112.0	550.1	556.2	782.3	0.00	0.00	0.00
FT. HAYES									
7,200.0	0.00	0.00	7,126.0	550.1	556.2	782.3	0.00	0.00	0.00
7,215.0	0.00	0.00	7,141.0	550.1	556.2	782.3	0.00	0.00	0.00
CODELL									
7,226.0	0.00	0.00	7,152.0	550.1	556.2	782.3	0.00	0.00	0.00
FAIRPORT									
7,240.0	0.00	0.00	7,166.0	550.1	556.2	782.3	0.00	0.00	0.00
7,276.0	0.00	0.00	7,202.0	550.1	556.2	782.3	0.00	0.00	0.00
GREENHORN									
7,280.0	0.00	0.00	7,206.0	550.1	556.2	782.3	0.00	0.00	0.00
7,320.0	0.00	0.00	7,246.0	550.1	556.2	782.3	0.00	0.00	0.00
7,360.0	0.00	0.00	7,286.0	550.1	556.2	782.3	0.00	0.00	0.00
7,400.0	0.00	0.00	7,326.0	550.1	556.2	782.3	0.00	0.00	0.00
7,440.0	0.00	0.00	7,366.0	550.1	556.2	782.3	0.00	0.00	0.00

Database:	Landmark	Local Co-ordinate Reference:	Well Dowdy 41-10
Company:	EnCana Oil & Gas Weld County CO	TVD Reference:	WELL @ 4870.0ft (Original Well Elev)
Project:	SEC.10-T2N-R65W	MD Reference:	WELL @ 4870.0ft (Original Well Elev)
Site:	Dowdy 4-2-10 Pad Sec.10-T2N-R65W	North Reference:	True
Well:	Dowdy 41-10	Survey Calculation Method:	Minimum Curvature
Wellbore:	Wellbore #1		
Design:	Plan #2 (7-20-12)		

Planned Survey										
Measured Depth (ft)	Inclination (°)	Azimuth (°)	Vertical Depth (ft)	+N/-S (ft)	+E/-W (ft)	Vertical Section (ft)	Dogleg Rate (°/100ft)	Build Rate (°/100ft)	Turn Rate (°/100ft)	
7,480.0	0.00	0.00	7,406.0	550.1	556.2	782.3	0.00	0.00	0.00	
7,491.0	0.00	0.00	7,417.0	550.1	556.2	782.3	0.00	0.00	0.00	
GRANEROS										
7,520.0	0.00	0.00	7,446.0	550.1	556.2	782.3	0.00	0.00	0.00	
7,560.0	0.00	0.00	7,486.0	550.1	556.2	782.3	0.00	0.00	0.00	
7,600.0	0.00	0.00	7,526.0	550.1	556.2	782.3	0.00	0.00	0.00	
7,640.0	0.00	0.00	7,566.0	550.1	556.2	782.3	0.00	0.00	0.00	
7,641.0	0.00	0.00	7,567.0	550.1	556.2	782.3	0.00	0.00	0.00	
MOWRY										
7,657.0	0.00	0.00	7,583.0	550.1	556.2	782.3	0.00	0.00	0.00	
J-SAND										
7,680.0	0.00	0.00	7,606.0	550.1	556.2	782.3	0.00	0.00	0.00	
7,720.0	0.00	0.00	7,646.0	550.1	556.2	782.3	0.00	0.00	0.00	
7,749.0	0.00	0.00	7,675.0	550.1	556.2	782.3	0.00	0.00	0.00	
SKULL CREEK A MARKER										
7,760.0	0.00	0.00	7,686.0	550.1	556.2	782.3	0.00	0.00	0.00	
7,800.0	0.00	0.00	7,726.0	550.1	556.2	782.3	0.00	0.00	0.00	
7,807.0	0.00	0.00	7,733.0	550.1	556.2	782.3	0.00	0.00	0.00	

Casing Points					
Measured Depth (ft)	Vertical Depth (ft)	Name	Casing Diameter (")	Hole Diameter (")	
904.2	900.0	8 5/8"	8-5/8	12-1/4	

Formations						
Measured Depth (ft)	Vertical Depth (ft)	Name	Lithology	Dip (°)	Dip Direction (°)	
694.2	692.0	BASE FOX HILLS		0.00		
4,343.2	4,276.0	SUSSEX		0.00		
4,524.7	4,454.0	SUSSEX PAY TOP		0.00		
4,683.8	4,611.0	SUSSEX MARKER		0.00		
6,544.0	6,470.0	TEEPEE BUTTES		0.00		
6,866.0	6,792.0	SHARON SPRINGS		0.00		
6,939.0	6,865.0	NIOBRARA		0.00		
7,186.0	7,112.0	FT. HAYES		0.00		
7,215.0	7,141.0	CODELL		0.00		
7,226.0	7,152.0	FAIRPORT		0.00		
7,276.0	7,202.0	GREENHORN		0.00		
7,491.0	7,417.0	GRANEROS		0.00		
7,641.0	7,567.0	MOWRY		0.00		
7,657.0	7,583.0	J-SAND		0.00		
7,749.0	7,675.0	SKULL CREEK A MARKER		0.00		



Directional

EnCana Oil & Gas Weld County CO

SEC.10-T2N-R65W

Dowdy 4-2-10 Pad Sec.10-T2N-R65W

Dowdy 41-10

Wellbore #1

Plan #2 (7-20-12)

Anticollision Report

23 July, 2012

Company:	EnCana Oil & Gas Weld County CO	Local Co-ordinate Reference:	Well Dowdy 41-10
Project:	SEC.10-T2N-R65W	TVD Reference:	WELL @ 4870.0ft (Original Well Elev)
Reference Site:	Dowdy 4-2-10 Pad Sec.10-T2N-R65W	MD Reference:	WELL @ 4870.0ft (Original Well Elev)
Site Error:	0.0ft	North Reference:	True
Reference Well:	Dowdy 41-10	Survey Calculation Method:	Minimum Curvature
Well Error:	0.0ft	Output errors are at	2.00 sigma
Reference Wellbore	Wellbore #1	Database:	Landmark
Reference Design:	Plan #2 (7-20-12)	Offset TVD Reference:	Offset Datum

Offset Design													Offset Site Error:	0.0 ft
Survey Program: 100-NS-GYRO-MS													Offset Well Error:	0.0 ft
Reference		Offset		Semi Major Axis			Distance							Warning
Measured Depth (ft)	Vertical Depth (ft)	Measured Depth (ft)	Vertical Depth (ft)	Reference (ft)	Offset (ft)	Highside Toolface (°)	Offset Wellbore Centre +N/-S (ft)	+E/-W (ft)	Between Centres (ft)	Between Ellipses (ft)	Minimum Separation (ft)	Separation Factor		
1,800.0	1,781.0	1,780.2	1,780.1	5.4	4.2	146.45	66.8	70.6	121.1	112.7	8.39	14.429		
1,900.0	1,879.1	1,877.6	1,877.5	5.8	4.5	151.61	67.2	68.8	138.0	129.2	8.84	15.609		
2,000.0	1,977.2	1,975.7	1,975.6	6.2	4.7	155.56	67.4	67.3	155.9	146.6	9.31	16.754		
2,100.0	2,075.3	2,074.2	2,074.1	6.6	4.9	158.61	67.7	66.1	174.1	164.3	9.79	17.783		
2,200.0	2,173.4	2,171.8	2,171.6	7.0	5.2	161.04	68.2	65.0	192.5	182.2	10.28	18.732		
2,300.0	2,271.5	2,269.4	2,269.2	7.4	5.4	163.00	68.2	63.9	211.5	200.7	10.75	19.667		
2,400.0	2,369.6	2,367.1	2,367.0	7.8	5.6	164.58	68.1	63.0	230.8	219.5	11.23	20.557		
2,500.0	2,467.7	2,465.1	2,464.9	8.3	5.9	165.95	68.0	61.9	250.2	238.5	11.70	21.381		
2,600.0	2,565.8	2,562.7	2,562.5	8.7	6.1	167.17	68.1	60.7	269.8	257.7	12.19	22.135		
2,700.0	2,663.9	2,661.5	2,661.3	9.1	6.4	168.24	68.1	59.3	289.6	276.9	12.69	22.823		
2,800.0	2,762.0	2,760.2	2,760.0	9.5	6.6	169.20	68.5	58.2	309.0	295.8	13.20	23.412		
2,900.0	2,860.1	2,858.7	2,858.5	9.9	6.9	170.06	69.2	57.1	328.3	314.6	13.71	23.948		
3,000.0	2,958.2	2,956.4	2,956.2	10.3	7.1	170.84	69.9	55.9	347.6	333.4	14.22	24.444		
3,100.0	3,056.3	3,053.2	3,053.0	10.8	7.4	171.62	70.9	54.2	367.2	352.5	14.73	24.929		
3,200.0	3,154.4	3,149.4	3,149.2	11.2	7.6	172.34	71.7	52.1	387.3	372.0	15.23	25.426		
3,300.0	3,252.5	3,248.6	3,248.3	11.6	7.9	172.88	71.7	50.5	407.6	391.9	15.73	25.913		
3,400.0	3,350.7	3,348.2	3,347.9	12.0	8.1	173.43	72.5	49.0	427.2	411.0	16.24	26.309		
3,500.0	3,448.8	3,444.3	3,444.0	12.5	8.4	173.92	73.2	47.5	447.1	430.4	16.74	26.706		
3,600.0	3,546.9	3,539.9	3,539.5	12.9	8.6	174.29	73.2	46.0	467.4	450.2	17.24	27.122		
3,700.0	3,645.0	3,634.4	3,634.1	13.3	8.9	174.69	73.1	43.9	488.4	470.7	17.72	27.560		
3,800.0	3,743.1	3,731.1	3,730.7	13.7	9.1	175.08	72.8	41.2	509.9	491.7	18.21	27.996		
3,900.0	3,841.2	3,830.9	3,830.5	14.1	9.3	175.54	73.2	38.1	531.1	512.4	18.72	28.366		
4,000.0	3,939.3	3,928.1	3,927.7	14.6	9.6	175.94	73.6	35.1	552.4	533.1	19.23	28.720		
4,100.0	4,037.4	4,029.1	4,028.6	15.0	9.9	176.38	74.6	31.9	573.3	553.6	19.75	29.023		
4,200.0	4,135.5	4,131.6	4,131.0	15.4	10.1	176.80	76.1	29.0	593.7	573.4	20.28	29.275		
4,300.0	4,233.6	4,200.0	4,199.4	15.8	10.3	177.02	77.1	27.9	614.0	593.3	20.71	29.645		
4,400.0	4,331.7	4,200.0	4,199.4	16.3	10.3	177.02	77.1	27.9	646.0	625.0	20.97	30.798		
4,500.0	4,429.8	4,200.0	4,199.4	16.7	10.3	177.02	77.1	27.9	691.0	669.8	21.24	32.541		
4,515.3	4,444.9	4,200.0	4,199.4	16.8	10.3	177.02	77.1	27.9	699.0	677.7	21.28	32.852		
4,600.0	4,528.1	4,200.0	4,199.4	17.1	10.3	177.08	77.1	27.9	745.8	724.3	21.53	34.639		
4,700.0	4,627.0	4,200.0	4,199.4	17.3	10.3	177.15	77.1	27.9	806.8	785.0	21.78	37.043		
4,800.0	4,726.4	4,200.0	4,199.4	17.6	10.3	177.24	77.1	27.9	872.4	850.4	21.99	39.670		
4,900.0	4,826.1	4,200.0	4,199.4	17.8	10.3	177.33	77.1	27.9	941.7	919.5	22.17	42.478		
5,000.0	4,926.0	4,200.0	4,199.4	18.0	10.3	177.42	77.1	27.9	1,013.9	991.5	22.31	45.440		
5,074.0	5,000.0	4,200.0	4,199.4	18.0	10.3	-131.84	77.1	27.9	1,068.7	1,046.3	22.40	47.716		
5,100.0	5,026.0	4,200.0	4,199.4	18.1	10.3	-131.84	77.1	27.9	1,088.3	1,065.8	22.44	48.490		
5,200.0	5,126.0	4,200.0	4,199.4	18.2	10.3	-131.84	77.1	27.9	1,166.0	1,143.3	22.63	51.514		
5,300.0	5,226.0	4,200.0	4,199.4	18.3	10.3	-131.84	77.1	27.9	1,246.8	1,224.0	22.83	54.623		
5,400.0	5,326.0	4,200.0	4,199.4	18.5	10.3	-131.84	77.1	27.9	1,330.3	1,307.3	23.02	57.791		
5,500.0	5,426.0	4,200.0	4,199.4	18.6	10.3	-131.84	77.1	27.9	1,415.9	1,392.7	23.21	60.996		
5,600.0	5,526.0	4,200.0	4,199.4	18.7	10.3	-131.84	77.1	27.9	1,503.3	1,479.9	23.41	64.221		
5,700.0	5,626.0	4,200.0	4,199.4	18.9	10.3	-131.84	77.1	27.9	1,592.2	1,568.6	23.60	67.453		
5,800.0	5,726.0	4,200.0	4,199.4	19.0	10.3	-131.84	77.1	27.9	1,682.3	1,658.5	23.80	70.682		
5,900.0	5,826.0	4,200.0	4,199.4	19.2	10.3	-131.84	77.1	27.9	1,773.5	1,749.5	24.00	73.899		
6,000.0	5,926.0	4,200.0	4,199.4	19.3	10.3	-131.84	77.1	27.9	1,865.6	1,841.4	24.20	77.098		
6,100.0	6,026.0	4,200.0	4,199.4	19.5	10.3	-131.84	77.1	27.9	1,958.4	1,934.0	24.40	80.274		
6,200.0	6,126.0	4,200.0	4,199.4	19.6	10.3	-131.84	77.1	27.9	2,052.0	2,027.4	24.60	83.424		
6,300.0	6,226.0	4,200.0	4,199.4	19.8	10.3	-131.84	77.1	27.9	2,146.1	2,121.3	24.80	86.544		
6,400.0	6,326.0	4,200.0	4,199.4	19.9	10.3	-131.84	77.1	27.9	2,240.7	2,215.7	25.00	89.631		
6,500.0	6,426.0	4,200.0	4,199.4	20.1	10.3	-131.84	77.1	27.9	2,335.8	2,310.6	25.20	92.685		
6,600.0	6,526.0	4,200.0	4,199.4	20.2	10.3	-131.84	77.1	27.9	2,431.3	2,405.9	25.40	95.703		
6,700.0	6,626.0	4,200.0	4,199.4	20.4	10.3	-131.84	77.1	27.9	2,527.1	2,501.5	25.61	98.684		

CC - Min centre to center distance or convergent point, SF - min separation factor, ES - min ellipse separation

Company:	EnCana Oil & Gas Weld County CO	Local Co-ordinate Reference:	Well Dowdy 41-10
Project:	SEC.10-T2N-R65W	TVD Reference:	WELL @ 4870.0ft (Original Well Elev)
Reference Site:	Dowdy 4-2-10 Pad Sec.10-T2N-R65W	MD Reference:	WELL @ 4870.0ft (Original Well Elev)
Site Error:	0.0ft	North Reference:	True
Reference Well:	Dowdy 41-10	Survey Calculation Method:	Minimum Curvature
Well Error:	0.0ft	Output errors are at	2.00 sigma
Reference Wellbore	Wellbore #1	Database:	Landmark
Reference Design:	Plan #2 (7-20-12)	Offset TVD Reference:	Offset Datum

Offset Design Dowdy 4-2-10 Pad Sec.10-T2N-R65W - Dowdy #1 (Exist.) - Wellbore #1 - Wellbore #1												Offset Site Error:	0.0 ft
Survey Program: 100-NS-GYRO-MS												Offset Well Error:	0.0 ft
Reference	Offset	Semi Major Axis		Distance									
Measured Depth (ft)	Vertical Depth (ft)	Measured Depth (ft)	Vertical Depth (ft)	Reference (ft)	Offset (ft)	Highside Toolface (°)	Offset Wellbore Centre +N/-S (ft)	+E/-W (ft)	Between Centres (ft)	Between Ellipses (ft)	Minimum Separation (ft)	Separation Factor	Warning
6,800.0	6,726.0	4,200.0	4,199.4	20.5	10.3	-131.84	77.1	27.9	2,623.2	2,597.4	25.81	101.629	
6,900.0	6,826.0	4,200.0	4,199.4	20.7	10.3	-131.84	77.1	27.9	2,719.6	2,693.6	26.02	104.535	
7,000.0	6,926.0	4,200.0	4,199.4	20.8	10.3	-131.84	77.1	27.9	2,816.3	2,790.1	26.22	107.404	
7,100.0	7,026.0	4,200.0	4,199.4	21.0	10.3	-131.84	77.1	27.9	2,913.2	2,886.8	26.43	110.234	
7,200.0	7,126.0	4,200.0	4,199.4	21.2	10.3	-131.84	77.1	27.9	3,010.3	2,983.6	26.63	113.026	
7,300.0	7,226.0	4,200.0	4,199.4	21.3	10.3	-131.84	77.1	27.9	3,107.6	3,080.7	26.84	115.780	
7,400.0	7,326.0	4,200.0	4,199.4	21.5	10.3	-131.84	77.1	27.9	3,205.0	3,177.9	27.05	118.496	
7,500.0	7,426.0	4,200.0	4,199.4	21.6	10.3	-131.84	77.1	27.9	3,302.6	3,275.3	27.25	121.175	
7,600.0	7,526.0	4,200.0	4,199.4	21.8	10.3	-131.84	77.1	27.9	3,400.3	3,372.9	27.46	123.816	
7,700.0	7,626.0	4,200.0	4,199.4	22.0	10.3	-131.84	77.1	27.9	3,498.2	3,470.5	27.67	126.420	
7,807.0	7,733.0	4,200.0	4,199.4	22.1	10.3	-131.84	77.1	27.9	3,603.1	3,575.3	27.78	129.684	

Company:	EnCana Oil & Gas Weld County CO	Local Co-ordinate Reference:	Well Dowdy 41-10
Project:	SEC.10-T2N-R65W	TVD Reference:	WELL @ 4870.0ft (Original Well Elev)
Reference Site:	Dowdy 4-2-10 Pad Sec.10-T2N-R65W	MD Reference:	WELL @ 4870.0ft (Original Well Elev)
Site Error:	0.0ft	North Reference:	True
Reference Well:	Dowdy 41-10	Survey Calculation Method:	Minimum Curvature
Well Error:	0.0ft	Output errors are at	2.00 sigma
Reference Wellbore	Wellbore #1	Database:	Landmark
Reference Design:	Plan #2 (7-20-12)	Offset TVD Reference:	Offset Datum

Offset Design													Offset Site Error:	0.0 ft
Survey Program: 0-MWD													Offset Well Error:	0.0 ft
Reference		Offset		Semi Major Axis			Distance							Warning
Measured Depth (ft)	Vertical Depth (ft)	Measured Depth (ft)	Vertical Depth (ft)	Reference (ft)	Offset (ft)	Highside Toolface (°)	Offset Wellbore Centre +N/-S (ft)	+E/-W (ft)	Between Centres (ft)	Between Ellipses (ft)	Minimum Separation (ft)	Separation Factor		
0.0	0.0	0.0	0.0	0.0	0.0	-89.91	0.0	-8.4	8.4	8.4	0.00	N/A		
100.0	100.0	100.0	100.0	0.1	0.1	-89.91	0.0	-8.4	8.4	8.2	0.22	37.308		
200.0	200.0	200.0	200.0	0.3	0.3	-89.91	0.0	-8.4	8.4	7.7	0.67	12.436		
265.3	265.3	265.3	265.3	0.5	0.5	-90.00	0.0	-8.4	8.4	7.4	0.97	8.634 CC		
300.0	300.0	300.0	300.0	0.6	0.6	-96.84	0.0	-8.4	8.4	7.3	1.12	7.487 ES		
400.0	399.8	399.8	399.8	0.8	0.8	-126.67	0.0	-8.4	10.4	8.8	1.58	6.577 SF		
500.0	499.5	499.0	499.0	1.0	1.0	-154.54	-1.6	-7.7	18.3	16.3	2.04	9.001		
600.0	598.7	596.8	596.6	1.3	1.2	-169.22	-6.2	-5.8	34.2	31.7	2.49	13.744		
700.0	697.7	693.0	692.4	1.6	1.4	-176.03	-13.8	-2.6	55.7	52.7	2.93	18.987		
800.0	796.8	787.6	786.4	2.0	1.6	-179.78	-24.1	1.8	80.5	77.2	3.38	23.816		
900.0	895.8	880.7	878.5	2.3	1.9	163.78	-37.0	7.3	108.3	104.5	3.82	28.337		
1,000.0	994.8	972.3	968.5	2.5	2.2	149.50	-52.5	13.8	138.3	134.1	4.26	32.453		
1,100.0	1,093.7	1,062.3	1,056.4	2.9	2.6	137.85	-70.2	21.3	170.6	165.8	4.73	36.086		
1,200.0	1,192.3	1,150.6	1,142.0	3.2	3.0	128.88	-90.0	29.7	205.0	199.8	5.22	39.266		
1,267.6	1,258.7	1,209.3	1,198.6	3.4	3.3	124.11	-104.6	35.8	229.5	223.9	5.57	41.172		
1,300.0	1,290.5	1,237.1	1,225.2	3.5	3.4	124.59	-111.8	38.9	241.6	235.9	5.75	42.005		
1,400.0	1,388.6	1,325.8	1,309.9	3.9	3.9	125.73	-136.2	49.2	280.5	274.2	6.33	44.345		
1,500.0	1,486.7	1,417.7	1,397.5	4.2	4.5	126.60	-161.7	60.0	319.7	312.8	6.91	46.258		
1,600.0	1,584.8	1,509.6	1,485.1	4.6	5.0	127.29	-187.2	70.8	359.0	351.5	7.52	47.735		
1,700.0	1,682.9	1,601.5	1,572.8	5.0	5.6	127.84	-212.8	81.6	398.3	390.2	8.14	48.919		
1,800.0	1,781.0	1,693.4	1,660.4	5.4	6.1	128.29	-238.3	92.4	437.6	428.9	8.78	49.866		
1,900.0	1,879.1	1,785.3	1,748.0	5.8	6.7	128.67	-263.8	103.2	477.0	467.6	9.42	50.636		
2,000.0	1,977.2	1,877.2	1,835.6	6.2	7.2	128.99	-289.3	114.0	516.4	506.3	10.07	51.269		
2,100.0	2,075.3	1,969.0	1,923.2	6.6	7.8	129.26	-314.8	124.8	555.8	545.0	10.73	51.795		
2,200.0	2,173.4	2,060.9	2,010.8	7.0	8.4	129.50	-340.3	135.6	595.1	583.7	11.39	52.237		
2,300.0	2,271.5	2,152.8	2,098.4	7.4	8.9	129.71	-365.9	146.4	634.5	622.5	12.06	52.611		
2,400.0	2,369.6	2,244.7	2,186.0	7.8	9.5	129.89	-391.4	157.2	673.9	661.2	12.73	52.930		
2,500.0	2,467.7	2,336.6	2,273.7	8.3	10.1	130.05	-416.9	168.0	713.4	699.9	13.41	53.204		
2,600.0	2,565.8	2,428.5	2,361.3	8.7	10.7	130.20	-442.4	178.7	752.8	738.7	14.09	53.442		
2,700.0	2,663.9	2,520.4	2,448.9	9.1	11.2	130.33	-467.9	189.5	792.2	777.4	14.77	53.650		
2,800.0	2,762.0	2,612.3	2,536.5	9.5	11.8	130.45	-493.4	200.3	831.6	816.2	15.45	53.832		
2,900.0	2,860.1	2,704.2	2,624.1	9.9	12.4	130.56	-518.9	211.1	871.0	854.9	16.13	53.992		
3,000.0	2,958.2	2,796.0	2,711.7	10.3	13.0	130.66	-544.5	221.9	910.4	893.6	16.82	54.134		
3,100.0	3,056.3	2,887.9	2,799.3	10.8	13.5	130.75	-570.0	232.7	949.9	932.4	17.51	54.261		
3,200.0	3,154.4	2,979.8	2,887.0	11.2	14.1	130.83	-595.5	243.5	989.3	971.1	18.19	54.374		
3,300.0	3,252.5	3,071.7	2,974.6	11.6	14.7	130.91	-621.0	254.3	1,028.7	1,009.9	18.88	54.475		
3,400.0	3,350.7	3,163.6	3,062.2	12.0	15.3	130.98	-646.5	265.1	1,068.2	1,048.6	19.58	54.567		
3,500.0	3,448.8	3,255.5	3,149.8	12.5	15.8	131.05	-672.0	275.9	1,107.6	1,087.3	20.27	54.649		
3,600.0	3,546.9	3,347.4	3,237.4	12.9	16.4	131.11	-697.6	286.7	1,147.0	1,126.1	20.96	54.725		
3,700.0	3,645.0	3,439.3	3,325.0	13.3	17.0	131.17	-723.1	297.5	1,186.5	1,164.8	21.65	54.793		
3,800.0	3,743.1	3,531.2	3,412.6	13.7	17.6	131.22	-748.6	308.3	1,225.9	1,203.6	22.35	54.855		
3,900.0	3,841.2	3,623.0	3,500.2	14.1	18.1	131.27	-774.1	319.1	1,265.3	1,242.3	23.04	54.912		
4,000.0	3,939.3	3,714.9	3,587.9	14.6	18.7	131.32	-799.6	329.8	1,304.8	1,281.0	23.74	54.964		
4,100.0	4,037.4	3,806.8	3,675.5	15.0	19.3	131.37	-825.1	340.6	1,344.2	1,319.8	24.43	55.012		
4,200.0	4,135.5	3,898.7	3,763.1	15.4	19.9	131.41	-850.6	351.4	1,383.7	1,358.5	25.13	55.057		
4,300.0	4,233.6	3,990.6	3,850.7	15.8	20.4	131.45	-876.2	362.2	1,423.1	1,397.3	25.83	55.097		
4,400.0	4,331.7	4,082.5	3,938.3	16.3	21.0	131.49	-901.7	373.0	1,462.5	1,436.0	26.53	55.135		
4,500.0	4,429.8	4,174.4	4,025.9	16.7	21.6	131.52	-927.2	383.8	1,502.0	1,474.8	27.22	55.170		
4,515.3	4,444.9	4,188.5	4,039.4	16.8	21.7	131.53	-931.1	385.5	1,508.0	1,480.7	27.33	55.175		
4,600.0	4,528.1	4,266.6	4,113.9	17.1	22.2	132.05	-952.8	394.6	1,540.7	1,512.7	28.00	55.015		
4,700.0	4,627.0	4,359.6	4,202.6	17.3	22.8	132.52	-978.6	405.6	1,577.2	1,548.5	28.72	54.912		
4,800.0	4,726.4	4,453.4	4,292.0	17.6	23.4	132.86	-1,004.7	416.6	1,611.5	1,582.1	29.40	54.818		

CC - Min centre to center distance or convergent point, SF - min separation factor, ES - min ellipse separation

Company:	EnCana Oil & Gas Weld County CO	Local Co-ordinate Reference:	Well Dowdy 41-10
Project:	SEC.10-T2N-R65W	TVD Reference:	WELL @ 4870.0ft (Original Well Elev)
Reference Site:	Dowdy 4-2-10 Pad Sec.10-T2N-R65W	MD Reference:	WELL @ 4870.0ft (Original Well Elev)
Site Error:	0.0ft	North Reference:	True
Reference Well:	Dowdy 41-10	Survey Calculation Method:	Minimum Curvature
Well Error:	0.0ft	Output errors are at	2.00 sigma
Reference Wellbore	Wellbore #1	Database:	Landmark
Reference Design:	Plan #2 (7-20-12)	Offset TVD Reference:	Offset Datum

Offset Design												Offset Site Error:	0.0 ft
Survey Program: 0-MWD												Offset Well Error:	0.0 ft
Reference		Offset		Semi Major Axis			Distance						
Measured Depth (ft)	Vertical Depth (ft)	Measured Depth (ft)	Vertical Depth (ft)	Reference (ft)	Offset (ft)	Highside Toolface (°)	Offset Wellbore Centre +N/-S (ft)	+E/-W (ft)	Between Centres (ft)	Between Ellipses (ft)	Minimum Separation (ft)	Separation Factor	Warning
4,900.0	4,826.1	4,547.8	4,382.0	17.8	23.9	133.08	-1,030.9	427.7	1,643.7	1,613.6	30.03	54.738	
5,000.0	4,926.0	4,642.7	4,472.4	18.0	24.5	133.17	-1,057.2	438.8	1,673.6	1,643.0	30.61	54.678	
5,074.0	5,000.0	4,713.2	4,539.6	18.0	25.0	-176.16	-1,076.8	447.1	1,694.3	1,663.3	31.00	54.646	
5,100.0	5,026.0	4,737.9	4,563.3	18.1	25.1	-176.28	-1,083.7	450.0	1,701.4	1,670.2	31.13	54.662	
5,200.0	5,126.0	4,833.3	4,654.2	18.2	25.7	-176.73	-1,110.1	461.2	1,728.6	1,697.0	31.60	54.700	
5,300.0	5,226.0	4,928.6	4,745.1	18.3	26.3	-177.16	-1,136.6	472.4	1,755.9	1,723.9	32.08	54.743	
5,400.0	5,326.0	5,024.0	4,836.0	18.5	26.9	-177.57	-1,163.1	483.6	1,783.4	1,750.8	32.55	54.790	
5,500.0	5,426.0	5,119.3	4,926.9	18.6	27.5	-177.98	-1,189.6	494.8	1,810.9	1,777.9	33.02	54.841	
5,600.0	5,526.0	5,336.5	5,136.1	18.7	28.5	-178.76	-1,243.2	517.5	1,835.7	1,801.9	33.74	54.412	
5,700.0	5,626.0	5,576.4	5,371.4	18.9	29.3	-179.35	-1,285.4	535.3	1,853.2	1,818.8	34.40	53.872	
5,800.0	5,726.0	5,822.4	5,616.0	19.0	29.8	-179.67	-1,309.6	545.6	1,863.0	1,828.0	34.98	53.254	
5,900.0	5,826.0	6,032.5	5,826.0	19.2	30.0	-179.74	-1,315.1	547.9	1,865.2	1,829.8	35.45	52.622	
6,000.0	5,926.0	6,132.5	5,926.0	19.3	30.1	-179.74	-1,315.1	547.9	1,865.2	1,829.5	35.74	52.186	
6,100.0	6,026.0	6,232.5	6,026.0	19.5	30.2	-179.74	-1,315.1	547.9	1,865.2	1,829.2	36.04	51.760	
6,200.0	6,126.0	6,332.5	6,126.0	19.6	30.3	-179.74	-1,315.1	547.9	1,865.2	1,828.9	36.33	51.338	
6,300.0	6,226.0	6,432.5	6,226.0	19.8	30.3	-179.74	-1,315.1	547.9	1,865.2	1,828.6	36.63	50.918	
6,400.0	6,326.0	6,532.5	6,326.0	19.9	30.4	-179.74	-1,315.1	547.9	1,865.2	1,828.3	36.93	50.500	
6,500.0	6,426.0	6,632.5	6,426.0	20.1	30.5	-179.74	-1,315.1	547.9	1,865.2	1,828.0	37.24	50.086	
6,600.0	6,526.0	6,732.5	6,526.0	20.2	30.6	-179.74	-1,315.1	547.9	1,865.2	1,827.7	37.55	49.674	
6,700.0	6,626.0	6,832.5	6,626.0	20.4	30.7	-179.74	-1,315.1	547.9	1,865.2	1,827.3	37.86	49.266	
6,800.0	6,726.0	6,932.5	6,726.0	20.5	30.7	-179.74	-1,315.1	547.9	1,865.2	1,827.0	38.17	48.861	
6,900.0	6,826.0	7,032.5	6,826.0	20.7	30.8	-179.74	-1,315.1	547.9	1,865.2	1,826.7	38.49	48.459	
7,000.0	6,926.0	7,132.5	6,926.0	20.8	30.9	-179.74	-1,315.1	547.9	1,865.2	1,826.4	38.81	48.060	
7,100.0	7,026.0	7,232.5	7,026.0	21.0	31.0	-179.74	-1,315.1	547.9	1,865.2	1,826.1	39.13	47.665	
7,200.0	7,126.0	7,332.5	7,126.0	21.2	31.1	-179.74	-1,315.1	547.9	1,865.2	1,825.7	39.46	47.274	
7,300.0	7,226.0	7,432.5	7,226.0	21.3	31.2	-179.74	-1,315.1	547.9	1,865.2	1,825.4	39.78	46.886	
7,400.0	7,326.0	7,532.5	7,326.0	21.5	31.3	-179.74	-1,315.1	547.9	1,865.2	1,825.1	40.11	46.501	
7,500.0	7,426.0	7,632.5	7,426.0	21.6	31.4	-179.74	-1,315.1	547.9	1,865.2	1,824.8	40.44	46.121	
7,600.0	7,526.0	7,732.5	7,526.0	21.8	31.5	-179.74	-1,315.1	547.9	1,865.2	1,824.4	40.78	45.744	
7,700.0	7,626.0	7,832.5	7,626.0	22.0	31.6	-179.74	-1,315.1	547.9	1,865.2	1,824.1	41.11	45.370	
7,771.0	7,697.0	7,903.5	7,697.0	22.0	31.7	-179.74	-1,315.1	547.9	1,865.2	1,823.9	41.28	45.179	
7,807.0	7,733.0	7,938.5	7,732.0	22.1	31.7	-179.74	-1,315.1	547.9	1,865.2	1,823.8	41.37	45.084	

Company:	EnCana Oil & Gas Weld County CO	Local Co-ordinate Reference:	Well Dowdy 41-10
Project:	SEC.10-T2N-R65W	TVD Reference:	WELL @ 4870.0ft (Original Well Elev)
Reference Site:	Dowdy 4-2-10 Pad Sec.10-T2N-R65W	MD Reference:	WELL @ 4870.0ft (Original Well Elev)
Site Error:	0.0ft	North Reference:	True
Reference Well:	Dowdy 41-10	Survey Calculation Method:	Minimum Curvature
Well Error:	0.0ft	Output errors are at	2.00 sigma
Reference Wellbore	Wellbore #1	Database:	Landmark
Reference Design:	Plan #2 (7-20-12)	Offset TVD Reference:	Offset Datum

Offset Design													Offset Site Error:	0.0ft
Survey Program: 0-MWDD													Offset Well Error:	0.0ft
Reference		Offset		Semi Major Axis			Distance							Warning
Measured Depth (ft)	Vertical Depth (ft)	Measured Depth (ft)	Vertical Depth (ft)	Reference (ft)	Offset (ft)	Highside Toolface (°)	Offset Wellbore Centre +N/-S (ft)	+E/-W (ft)	Between Centres (ft)	Between Ellipses (ft)	Minimum Separation (ft)	Separation Factor		
0.0	0.0	0.0	0.0	0.0	0.0	90.02	0.0	11.2	11.2	11.2	0.00	N/A		
100.0	100.0	100.0	100.0	0.1	0.1	90.02	0.0	11.2	11.2	11.0	0.22	49.744		
200.0	200.0	200.0	200.0	0.3	0.3	90.02	0.0	11.2	11.2	10.5	0.67	16.581 CC		
300.0	300.0	300.0	300.0	0.6	0.6	103.73	0.0	11.2	11.5	10.3	1.12	10.202 ES		
400.0	399.8	399.8	399.8	0.8	0.8	125.48	0.0	11.2	13.7	12.1	1.58	8.646 SF		
500.0	499.5	498.9	498.8	1.0	1.0	143.33	-0.5	12.8	21.5	19.4	2.04	10.505		
600.0	598.7	597.0	596.8	1.3	1.2	150.29	-1.8	17.7	35.8	33.3	2.51	14.271		
700.0	697.7	694.1	693.6	1.6	1.4	151.71	-4.0	25.7	54.4	51.4	2.98	18.261		
800.0	796.8	790.2	789.0	2.0	1.7	150.70	-7.0	36.8	75.5	72.0	3.47	21.751		
900.0	895.8	885.4	883.1	2.3	2.0	134.98	-10.8	50.8	98.0	94.0	3.97	24.691		
1,000.0	994.8	980.0	976.0	2.5	2.3	120.44	-15.5	67.6	120.8	116.3	4.49	26.869		
1,100.0	1,093.7	1,074.5	1,068.2	2.9	2.7	108.14	-20.9	87.4	143.7	138.7	5.07	28.344		
1,200.0	1,192.3	1,172.1	1,163.3	3.2	3.1	98.84	-26.8	108.9	165.4	159.7	5.70	29.012		
1,267.6	1,258.7	1,238.3	1,227.7	3.4	3.4	94.19	-30.8	123.5	178.8	172.6	6.15	29.048		
1,300.0	1,290.5	1,270.1	1,258.7	3.5	3.6	94.64	-32.7	130.5	185.0	178.6	6.38	28.980		
1,400.0	1,388.6	1,368.1	1,354.1	3.9	4.0	95.86	-38.6	152.2	204.1	197.0	7.11	28.725		
1,500.0	1,486.7	1,466.2	1,449.6	4.2	4.5	96.87	-44.5	173.8	223.3	215.5	7.85	28.452		
1,600.0	1,584.8	1,564.3	1,545.1	4.6	5.0	97.72	-50.5	195.5	242.6	234.0	8.61	28.184		
1,700.0	1,682.9	1,662.3	1,640.5	5.0	5.5	98.44	-56.4	217.1	261.9	252.5	9.38	27.928		
1,800.0	1,781.0	1,760.4	1,736.0	5.4	5.9	99.07	-62.3	238.8	281.2	271.1	10.16	27.688		
1,900.0	1,879.1	1,858.5	1,831.4	5.8	6.4	99.61	-68.2	260.4	300.6	289.7	10.95	27.466		
2,000.0	1,977.2	1,956.5	1,926.9	6.2	6.9	100.09	-74.2	282.1	320.0	308.3	11.74	27.262		
2,100.0	2,075.3	2,054.6	2,022.4	6.6	7.4	100.52	-80.1	303.7	339.4	326.9	12.54	27.075		
2,200.0	2,173.4	2,152.7	2,117.8	7.0	7.9	100.89	-86.0	325.3	358.9	345.5	13.34	26.903		
2,300.0	2,271.5	2,250.7	2,213.3	7.4	8.3	101.23	-91.9	347.0	378.3	364.2	14.15	26.745		
2,400.0	2,369.6	2,348.8	2,308.8	7.8	8.8	101.54	-97.9	368.6	397.8	382.8	14.95	26.599		
2,500.0	2,467.7	2,446.9	2,404.2	8.3	9.3	101.82	-103.8	390.3	417.2	401.5	15.77	26.465		
2,600.0	2,565.8	2,544.9	2,499.7	8.7	9.8	102.07	-109.7	411.9	436.7	420.1	16.58	26.341		
2,700.0	2,663.9	2,643.0	2,595.2	9.1	10.3	102.30	-115.6	433.6	456.2	438.8	17.40	26.227		
2,800.0	2,762.0	2,741.1	2,690.6	9.5	10.8	102.51	-121.6	455.2	475.7	457.5	18.21	26.120		
2,900.0	2,860.1	2,839.1	2,786.1	9.9	11.3	102.71	-127.5	476.9	495.2	476.2	19.03	26.021		
3,000.0	2,958.2	2,937.2	2,881.6	10.3	11.8	102.89	-133.4	498.5	514.7	494.9	19.85	25.930		
3,100.0	3,056.3	3,035.3	2,977.0	10.8	12.2	103.06	-139.3	520.1	534.2	513.5	20.67	25.844		
3,200.0	3,154.4	3,133.3	3,072.5	11.2	12.7	103.21	-145.3	541.8	553.7	532.2	21.49	25.763		
3,300.0	3,252.5	3,231.4	3,168.0	11.6	13.2	103.36	-151.2	563.4	573.2	550.9	22.32	25.688		
3,400.0	3,350.7	3,329.5	3,263.4	12.0	13.7	103.49	-157.1	585.1	592.8	569.6	23.14	25.618		
3,500.0	3,448.8	3,427.5	3,358.9	12.5	14.2	103.62	-163.0	606.7	612.3	588.3	23.96	25.551		
3,600.0	3,546.9	3,525.6	3,454.4	12.9	14.7	103.74	-169.0	628.4	631.8	607.0	24.79	25.489		
3,700.0	3,645.0	3,623.7	3,549.8	13.3	15.2	103.85	-174.9	650.0	651.3	625.7	25.61	25.430		
3,800.0	3,743.1	3,721.7	3,645.3	13.7	15.7	103.96	-180.8	671.6	670.9	644.4	26.44	25.374		
3,900.0	3,841.2	3,819.8	3,740.8	14.1	16.2	104.06	-186.7	693.3	690.4	663.1	27.26	25.322		
4,000.0	3,939.3	3,917.9	3,836.2	14.6	16.7	104.15	-192.7	714.9	709.9	681.8	28.09	25.272		
4,100.0	4,037.4	4,015.9	3,931.7	15.0	17.1	104.24	-198.6	736.6	729.5	700.5	28.92	25.225		
4,200.0	4,135.5	4,114.0	4,027.1	15.4	17.6	104.32	-204.5	758.2	749.0	719.3	29.75	25.180		
4,300.0	4,233.6	4,212.1	4,122.6	15.8	18.1	104.40	-210.5	779.9	768.5	738.0	30.57	25.137		
4,400.0	4,331.7	4,310.1	4,218.1	16.3	18.6	104.48	-216.4	801.5	788.1	756.7	31.40	25.096		
4,500.0	4,429.8	4,408.2	4,313.5	16.7	19.1	104.55	-222.3	823.2	807.6	775.4	32.23	25.057		
4,515.3	4,444.9	4,423.3	4,328.2	16.8	19.2	104.56	-223.2	826.5	810.6	778.3	32.36	25.052		
4,600.0	4,528.1	4,506.3	4,409.1	17.1	19.6	104.86	-228.2	844.8	826.8	793.8	33.04	25.022		
4,700.0	4,627.0	4,604.6	4,504.7	17.3	20.1	104.97	-234.2	866.5	845.2	811.5	33.76	25.038		
4,800.0	4,726.4	4,702.8	4,600.3	17.6	20.6	104.85	-240.1	888.2	862.7	828.3	34.41	25.072		
4,900.0	4,826.1	4,800.9	4,695.8	17.8	21.1	104.52	-246.0	909.8	879.5	844.5	35.00	25.127		

CC - Min centre to center distance or convergent point, SF - min separation factor, ES - min ellipse separation

Company:	EnCana Oil & Gas Weld County CO	Local Co-ordinate Reference:	Well Dowdy 41-10
Project:	SEC.10-T2N-R65W	TVD Reference:	WELL @ 4870.0ft (Original Well Elev)
Reference Site:	Dowdy 4-2-10 Pad Sec.10-T2N-R65W	MD Reference:	WELL @ 4870.0ft (Original Well Elev)
Site Error:	0.0ft	North Reference:	True
Reference Well:	Dowdy 41-10	Survey Calculation Method:	Minimum Curvature
Well Error:	0.0ft	Output errors are at	2.00 sigma
Reference Wellbore	Wellbore #1	Database:	Landmark
Reference Design:	Plan #2 (7-20-12)	Offset TVD Reference:	Offset Datum

Offset Design Dowdy 4-2-10 Pad Sec.10-T2N-R65W - Dowdy 8-2-10 - Wellbore #1 - Plan #1 (7-09-12)												Offset Site Error:	0.0 ft
Survey Program: 0-MWD												Offset Well Error:	0.0 ft
Reference		Offset		Semi Major Axis			Distance						
Measured Depth (ft)	Vertical Depth (ft)	Measured Depth (ft)	Vertical Depth (ft)	Reference (ft)	Offset (ft)	Highside Toolface (°)	Offset Wellbore Centre +N/-S (ft)	+E/-W (ft)	Between Centres (ft)	Between Ellipses (ft)	Minimum Separation (ft)	Separation Factor	Warning
5,000.0	4,926.0	4,898.7	4,791.0	18.0	21.6	103.98	-251.9	931.4	895.5	859.9	35.53	25.206	
5,074.0	5,000.0	4,970.9	4,861.3	18.0	21.9	154.12	-256.3	947.3	906.9	871.1	35.87	25.284	
5,100.0	5,026.0	4,996.1	4,885.9	18.1	22.1	153.85	-257.8	952.9	910.9	874.9	35.98	25.319	
5,200.0	5,126.0	5,093.5	4,980.6	18.2	22.5	152.80	-263.7	974.4	926.5	890.1	36.40	25.453	
5,300.0	5,226.0	5,200.3	5,084.7	18.3	23.0	151.71	-270.1	997.7	942.1	905.3	36.82	25.588	
5,400.0	5,326.0	5,328.3	5,210.2	18.5	23.5	150.63	-276.6	1,021.5	955.7	918.5	37.19	25.699	
5,500.0	5,426.0	5,458.2	5,338.7	18.6	23.8	149.81	-281.7	1,040.1	966.3	928.7	37.54	25.741	
5,600.0	5,526.0	5,589.7	5,469.5	18.7	24.1	149.25	-285.3	1,053.2	973.7	935.8	37.87	25.709	
5,700.0	5,626.0	5,722.1	5,601.7	18.9	24.3	148.94	-287.3	1,060.6	977.9	939.7	38.19	25.605	
5,800.0	5,726.0	5,846.4	5,726.0	19.0	24.4	148.87	-287.7	1,062.2	978.8	940.3	38.49	25.432	
5,900.0	5,826.0	5,946.4	5,826.0	19.2	24.5	148.87	-287.7	1,062.2	978.8	940.0	38.76	25.253	
6,000.0	5,926.0	6,046.4	5,926.0	19.3	24.7	148.87	-287.7	1,062.2	978.8	939.7	39.04	25.074	
6,100.0	6,026.0	6,146.4	6,026.0	19.5	24.8	148.87	-287.7	1,062.2	978.8	939.5	39.32	24.895	
6,200.0	6,126.0	6,246.4	6,126.0	19.6	24.9	148.87	-287.7	1,062.2	978.8	939.2	39.60	24.717	
6,300.0	6,226.0	6,346.4	6,226.0	19.8	25.0	148.87	-287.7	1,062.2	978.8	938.9	39.89	24.540	
6,400.0	6,326.0	6,446.4	6,326.0	19.9	25.1	148.87	-287.7	1,062.2	978.8	938.6	40.17	24.363	
6,500.0	6,426.0	6,546.4	6,426.0	20.1	25.2	148.87	-287.7	1,062.2	978.8	938.3	40.47	24.187	
6,600.0	6,526.0	6,646.4	6,526.0	20.2	25.3	148.87	-287.7	1,062.2	978.8	938.0	40.76	24.012	
6,700.0	6,626.0	6,746.4	6,626.0	20.4	25.5	148.87	-287.7	1,062.2	978.8	937.7	41.06	23.838	
6,800.0	6,726.0	6,846.4	6,726.0	20.5	25.6	148.87	-287.7	1,062.2	978.8	937.4	41.36	23.665	
6,900.0	6,826.0	6,946.4	6,826.0	20.7	25.7	148.87	-287.7	1,062.2	978.8	937.1	41.66	23.493	
7,000.0	6,926.0	7,046.4	6,926.0	20.8	25.8	148.87	-287.7	1,062.2	978.8	936.8	41.97	23.322	
7,100.0	7,026.0	7,146.4	7,026.0	21.0	25.9	148.87	-287.7	1,062.2	978.8	936.5	42.28	23.151	
7,200.0	7,126.0	7,246.4	7,126.0	21.2	26.1	148.87	-287.7	1,062.2	978.8	936.2	42.59	22.982	
7,300.0	7,226.0	7,346.4	7,226.0	21.3	26.2	148.87	-287.7	1,062.2	978.8	935.9	42.90	22.815	
7,400.0	7,326.0	7,446.4	7,326.0	21.5	26.3	148.87	-287.7	1,062.2	978.8	935.6	43.22	22.648	
7,500.0	7,426.0	7,546.4	7,426.0	21.6	26.4	148.87	-287.7	1,062.2	978.8	935.2	43.54	22.483	
7,600.0	7,526.0	7,646.4	7,526.0	21.8	26.6	148.87	-287.7	1,062.2	978.8	934.9	43.86	22.318	
7,700.0	7,626.0	7,746.4	7,626.0	22.0	26.7	148.87	-287.7	1,062.2	978.8	934.6	44.18	22.155	
7,768.1	7,694.1	7,814.5	7,694.1	22.0	26.8	148.87	-287.7	1,062.2	978.8	934.4	44.34	22.074	
7,807.0	7,733.0	7,844.4	7,724.0	22.1	26.8	148.87	-287.7	1,062.2	978.8	934.4	44.42	22.035	

Company:	EnCana Oil & Gas Weld County CO	Local Co-ordinate Reference:	Well Dowdy 41-10
Project:	SEC.10-T2N-R65W	TVD Reference:	WELL @ 4870.0ft (Original Well Elev)
Reference Site:	Dowdy 4-2-10 Pad Sec.10-T2N-R65W	MD Reference:	WELL @ 4870.0ft (Original Well Elev)
Site Error:	0.0ft	North Reference:	True
Reference Well:	Dowdy 41-10	Survey Calculation Method:	Minimum Curvature
Well Error:	0.0ft	Output errors are at	2.00 sigma
Reference Wellbore	Wellbore #1	Database:	Landmark
Reference Design:	Plan #2 (7-20-12)	Offset TVD Reference:	Offset Datum

Reference Depths are relative to WELL @ 4870.0ft (Original Well Elev) Coordinates are relative to: Dowdy 41-10
 Offset Depths are relative to Offset Datum Coordinate System is US State Plane 1983, Colorado Northern Zone
 Central Meridian is -105.500000 ° Grid Convergence at Surface is: 0.55°



Company:	EnCana Oil & Gas Weld County CO	Local Co-ordinate Reference:	Well Dowdy 41-10
Project:	SEC.10-T2N-R65W	TVD Reference:	WELL @ 4870.0ft (Original Well Elev)
Reference Site:	Dowdy 4-2-10 Pad Sec.10-T2N-R65W	MD Reference:	WELL @ 4870.0ft (Original Well Elev)
Site Error:	0.0ft	North Reference:	True
Reference Well:	Dowdy 41-10	Survey Calculation Method:	Minimum Curvature
Well Error:	0.0ft	Output errors are at	2.00 sigma
Reference Wellbore	Wellbore #1	Database:	Landmark
Reference Design:	Plan #2 (7-20-12)	Offset TVD Reference:	Offset Datum

Reference Depths are relative to WELL @ 4870.0ft (Original Well Elev) Coordinates are relative to: Dowdy 41-10
Offset Depths are relative to Offset Datum Coordinate System is US State Plane 1983, Colorado Northern Zone
Central Meridian is -105.500000 ° Grid Convergence at Surface is: 0.55°

