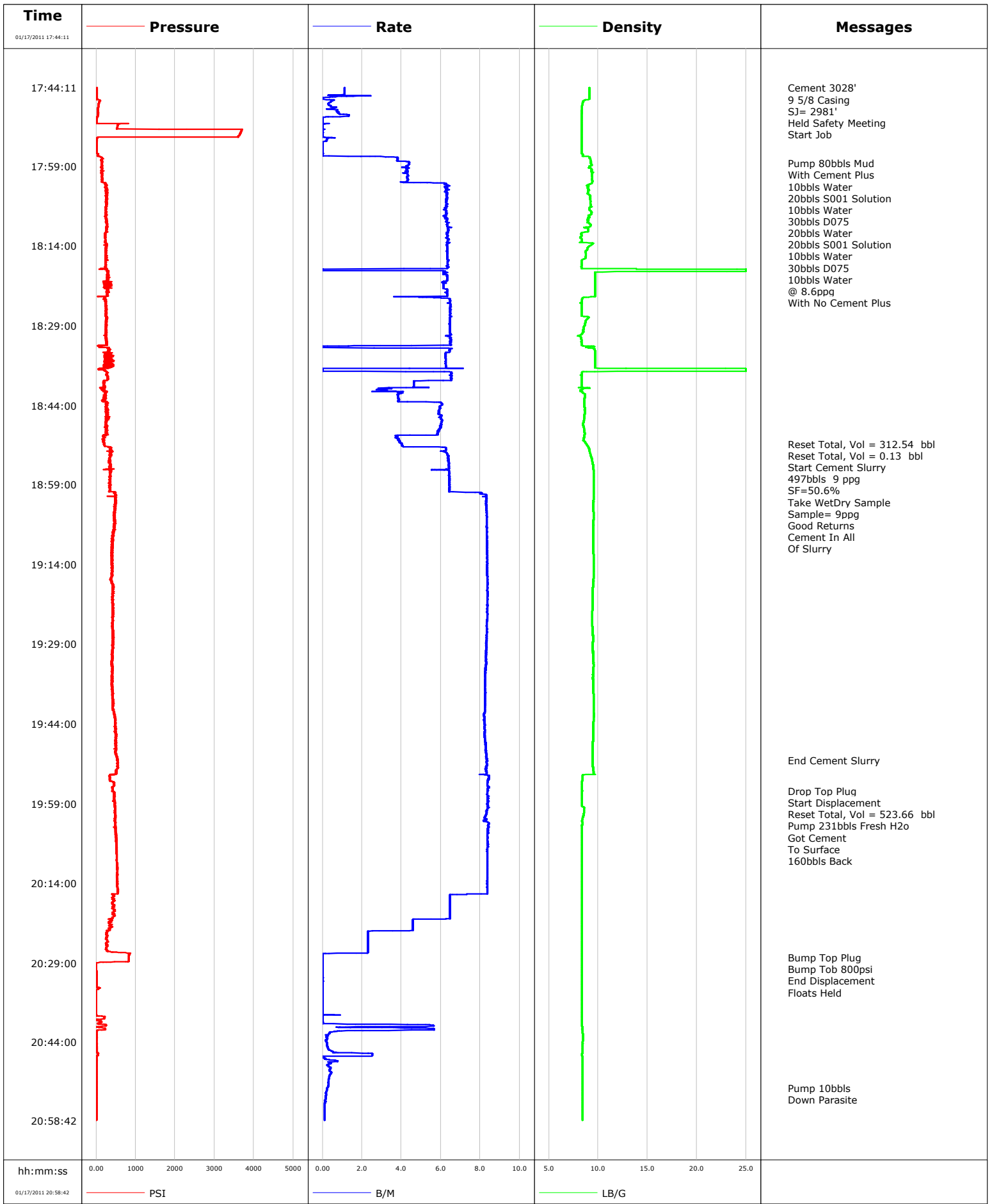


Well	SGU 8513 B-24	Client	ENCANA
Field	N PARACHUTE	SIR No.	BJ90-00143
Engineer		Job Type	SURFACE
Country	United States	Job Date	01-17-2011





Cementing Service Report

Customer					Job Number							
Well			Location (legal)			Schlumberger Location			Job Start Jan/17/2011			
Field		Formation Name/Type		Deviation		Bit Size		Well MD		Well TVD		
County		State/Province		BHP		BHST		BHCT		Pore Press. Gradient		
Well Master		API/UWI										
Rig Name		Drilled For		Service Via		Casing/Liner						
						Depth,	Size,	Weight,	Grade	Thread		
Offshore Zone		Well Class		Well Type								
Drilling Fluid Type		Max. Density		Plastic Viscosity		Tubing/Drill Pipe						
						Depth,	Size,	Weight,	Grade	Thread		
Service Line Cementing		Job Type										
Max. Allowed Tubing Press		Max. Allowed Ann. Press		WellHead Connection		Perforations/Open Hole						
						Top,	Bottom,		No. of Shots	Total Interval		
Service Instructions										Diameter		
						Treat Down		Displacement		Packer Type		Packer Depth
						Tubing Vol.		Casing Vol.		Annular Vol.		Openhole Vol.
Casing/Tubing Secured <input type="checkbox"/>		1 Hole Volume Circulated prior to Cement <input type="checkbox"/>		Casing Tools			Squeeze Job					
Lift Pressure				Shoe Type				Squeeze Type				
Pipe Rotated <input type="checkbox"/>		Pipe Reciprocated <input type="checkbox"/>		Shoe Depth				Tool Type				
No. Centralizers		Top Plugs		Bottom Plugs		Stage Tool Type		Tool Depth				
Cement Head Type				Stage Tool Depth				Tail Pipe Size				
Job Scheduled For Jan/17/2011		Arrived on Location Jan/17/2011		Leave Location Jan/17/2011		Collar Type		Tail Pipe Depth				
						Collar Depth		Sqz. Total Vol.				
Date	Time 24-hr clock	Treating Pressure PSI	Flow Rate B/M	Density LB/G	Volume BBL	Message						
01/01/1970	00:00:00					Started Acquisition						
01/17/2011	17:15:11					Started Acquisition						
01/17/2011	17:44:11	19	1.1	9.08	0.0							
01/17/2011	17:44:12					Cement 3028'						
01/17/2011	17:44:12					9 5/8 Casing						
01/17/2011	17:44:12	19	1.1	9.08	0.0							
01/17/2011	17:44:13					SJ= 2981'						
01/17/2011	17:44:13					Held Safety Meeting						
01/17/2011	17:44:13	19	1.1	9.08	0.1							
01/17/2011	17:44:14					Start Job						
01/17/2011	17:44:14	19	1.1	9.08	0.1							
01/17/2011	17:44:30	20	1.1	9.08	0.4							
01/17/2011	17:45:00	19	1.1	9.08	0.9							
01/17/2011	17:45:30	18	1.1	9.08	1.5							
01/17/2011	17:46:00	19	0.4	9.08	2.1							
01/17/2011	17:46:30	38	0.4	8.96	2.1							
01/17/2011	17:47:00	77	0.4	8.44	2.3							
01/17/2011	17:47:30	56	0.3	8.39	2.5							
01/17/2011	17:48:00	50	0.7	8.35	2.7							
01/17/2011	17:48:30	47	0.7	8.33	3.0							
01/17/2011	17:49:00	54	0.8	8.34	3.4							
01/17/2011	17:49:30	42	1.3	8.33	3.9							

Well			Field		Job Start Jan/17/2011	Customer		Job Number
Date	Time 24-hr clock	Treating Pressure PSI	Flow Rate B/M	Density LB/G	Volume BBL	Message		
01/17/2011	17:50:00	17	0.0	8.33	4.2			
01/17/2011	17:50:30	10	0.0	8.32	4.2			
01/17/2011	17:51:00	825	0.3	8.33	4.2			
01/17/2011	17:51:30	537	0.0	8.33	4.2			
01/17/2011	17:52:00	522	0.0	8.33	4.2			
01/17/2011	17:52:30	3671	0.0	8.33	4.2			
01/17/2011	17:53:00	3638	0.0	8.33	4.2			
01/17/2011	17:53:30	3597	0.0	8.33	4.2			
01/17/2011	17:54:00	15	0.2	8.33	4.4			
01/17/2011	17:54:30	11	0.0	8.33	4.4			
01/17/2011	17:55:00	11	0.0	8.33	4.5			
01/17/2011	17:55:30	11	0.0	8.33	4.5			
01/17/2011	17:56:00	10	0.0	8.33	4.5			
01/17/2011	17:56:30	10	0.0	8.33	4.5			
01/17/2011	17:57:00	34	0.0	8.46	4.5			
01/17/2011	17:57:30	152	3.8	9.11	5.7			
01/17/2011	17:58:00	120	3.8	9.24	7.6			
01/17/2011	17:58:29					Pump 80bbls Mud		
01/17/2011	17:58:29					With Cement Plus		
01/17/2011	17:58:29					10bbls Water		
01/17/2011	17:58:29					20bbls S001 Solution		
01/17/2011	17:58:29					10bbls Water		
01/17/2011	17:58:29	144	4.4	9.25	9.7			
01/17/2011	17:58:30					30bbls D075		
01/17/2011	17:58:30					20bbls Water		
01/17/2011	17:58:30					20bbls S001 Solution		
01/17/2011	17:58:30	144	4.4	9.26	9.7			
01/17/2011	17:59:00	180	4.3	9.23	11.9			
01/17/2011	17:59:30	150	4.2	9.30	14.1			
01/17/2011	18:00:00	149	4.3	9.31	16.2			
01/17/2011	18:00:30	145	4.3	9.35	18.3			
01/17/2011	18:01:00	138	4.3	9.38	20.5			
01/17/2011	18:01:12					10bbls Water		
01/17/2011	18:01:12	155	4.3	9.39	21.3			
01/17/2011	18:01:13					30bbls D075		
01/17/2011	18:01:13					10bbls Water		
01/17/2011	18:01:13	155	4.3	9.39	21.4			
01/17/2011	18:01:30	147	4.3	9.35	22.6			
01/17/2011	18:02:00	153	4.3	9.40	24.8			
01/17/2011	18:02:04					@ 8.6ppg		
01/17/2011	18:02:04	179	4.6	9.38	25.0			
01/17/2011	18:02:05					With No Cement Plus		
01/17/2011	18:02:05	196	5.0	9.39	25.1			
01/17/2011	18:02:30	235	6.3	9.01	27.7			
01/17/2011	18:03:00	264	6.3	9.00	30.8			
01/17/2011	18:03:30	253	6.4	8.97	34.0			
01/17/2011	18:04:00	250	6.4	8.94	37.1			
01/17/2011	18:04:30	285	6.3	9.15	40.2			
01/17/2011	18:05:00	255	6.3	9.17	43.4			
01/17/2011	18:05:30	246	6.3	9.19	46.5			
01/17/2011	18:06:00	280	6.3	9.21	49.7			
01/17/2011	18:06:30	265	6.3	9.24	52.8			
01/17/2011	18:07:00	247	6.2	9.08	55.9			
01/17/2011	18:07:30	259	6.3	9.27	59.1			
01/17/2011	18:08:00	257	6.3	9.27	62.2			

Well			Field		Job Start Jan/17/2011	Customer	Job Number
Date	Time 24-hr clock	Treating Pressure PSI	Flow Rate B/M	Density LB/G	Volume BBL	Message	
01/17/2011	18:08:30	230	6.2	9.09	65.3		
01/17/2011	18:09:00	267	6.3	8.99	68.4		
01/17/2011	18:09:30	278	6.3	8.98	71.6		
01/17/2011	18:10:00	257	6.3	9.22	74.8		
01/17/2011	18:10:30	280	6.4	8.87	77.9		
01/17/2011	18:11:00	261	6.4	9.01	81.1		
01/17/2011	18:11:30	235	6.3	8.50	84.3		
01/17/2011	18:12:00	233	6.3	8.30	87.4		
01/17/2011	18:12:30	240	6.3	8.18	90.6		
01/17/2011	18:13:00	231	6.3	8.34	93.8		
01/17/2011	18:13:30	243	6.4	9.37	97.0		
01/17/2011	18:14:00	262	6.3	9.16	100.1		
01/17/2011	18:14:30	240	6.3	8.89	103.3		
01/17/2011	18:15:00	241	6.3	8.74	106.5		
01/17/2011	18:15:30	245	6.3	8.74	109.6		
01/17/2011	18:16:00	241	6.3	8.73	112.8		
01/17/2011	18:16:30	248	6.3	8.57	115.9		
01/17/2011	18:17:00	246	6.3	8.33	119.1		
01/17/2011	18:17:30	251	6.3	8.33	122.3		
01/17/2011	18:18:00	233	6.4	8.30	125.4		
01/17/2011	18:18:30	256	0.0	25.00	127.7		
01/17/2011	18:19:00	285	6.2	9.68	129.6		
01/17/2011	18:19:30	285	6.3	9.67	132.6		
01/17/2011	18:20:00	286	6.3	9.68	135.8		
01/17/2011	18:20:30	291	6.3	9.68	139.0		
01/17/2011	18:21:00	292	6.2	9.68	142.0		
01/17/2011	18:21:30	205	6.1	9.68	145.1		
01/17/2011	18:22:00	328	6.1	9.68	148.2		
01/17/2011	18:22:30	284	6.3	9.68	151.3		
01/17/2011	18:23:00	280	6.3	9.68	154.5		
01/17/2011	18:23:30	278	6.3	9.68	157.6		
01/17/2011	18:24:00	216	6.5	8.38	160.4		
01/17/2011	18:24:30	250	6.5	8.35	163.7		
01/17/2011	18:25:00	249	6.5	8.31	166.9		
01/17/2011	18:25:30	233	6.5	8.32	170.1		
01/17/2011	18:26:00	257	6.5	8.33	173.4		
01/17/2011	18:26:30	253	6.5	8.33	176.6		
01/17/2011	18:27:00	257	6.5	8.33	179.9		
01/17/2011	18:27:30	281	6.5	9.06	183.1		
01/17/2011	18:28:00	260	6.5	8.79	186.3		
01/17/2011	18:28:30	253	6.5	8.68	189.5		
01/17/2011	18:29:00	247	6.5	8.63	192.8		
01/17/2011	18:29:30	239	6.5	8.50	196.0		
01/17/2011	18:30:00	255	6.5	8.48	199.2		
01/17/2011	18:30:30	251	6.5	8.39	202.5		
01/17/2011	18:31:00	248	6.3	8.04	205.7		
01/17/2011	18:31:30	243	6.5	8.25	208.9		
01/17/2011	18:32:00	260	6.4	8.32	212.2		
01/17/2011	18:32:30	260	6.5	8.32	215.4		
01/17/2011	18:33:00	120	0.0	9.26	217.5		
01/17/2011	18:33:30	323	6.5	9.63	219.1		
01/17/2011	18:34:00	330	6.4	9.67	222.3		
01/17/2011	18:34:30	389	6.2	9.68	225.5		
01/17/2011	18:35:00	249	6.2	9.68	228.6		
01/17/2011	18:35:30	287	6.2	9.68	231.7		

Well			Field		Job Start Jan/17/2011	Customer	Job Number
Date	Time 24-hr clock	Treating Pressure PSI	Flow Rate B/M	Density LB/G	Volume BBL	Message	
01/17/2011	18:36:00	378	6.2	9.68	234.8		
01/17/2011	18:36:30	255	6.2	9.68	237.9		
01/17/2011	18:37:00	220	6.2	9.68	241.0		
01/17/2011	18:37:30	235	0.0	25.00	241.8		
01/17/2011	18:38:00	282	6.6	8.35	243.8		
01/17/2011	18:38:30	264	6.6	8.33	247.0		
01/17/2011	18:39:00	283	6.5	8.32	250.3		
01/17/2011	18:39:30	201	4.6	8.32	253.4		
01/17/2011	18:40:00	201	4.6	8.32	255.7		
01/17/2011	18:40:30	229	4.6	8.33	258.0		
01/17/2011	18:41:00	217	3.1	8.36	260.0		
01/17/2011	18:41:30	258	4.1	8.23	261.6		
01/17/2011	18:42:00	214	3.8	8.66	263.5		
01/17/2011	18:42:30	234	3.8	8.65	265.4		
01/17/2011	18:43:00	196	3.9	8.59	267.3		
01/17/2011	18:43:30	287	6.0	8.59	269.5		
01/17/2011	18:44:00	259	6.1	8.62	272.5		
01/17/2011	18:44:30	248	5.9	8.63	275.5		
01/17/2011	18:45:00	292	5.9	8.63	278.4		
01/17/2011	18:45:30	239	5.9	8.63	281.4		
01/17/2011	18:46:00	271	6.0	8.62	284.3		
01/17/2011	18:46:30	284	6.0	8.59	287.3		
01/17/2011	18:47:00	268	6.1	8.53	290.3		
01/17/2011	18:47:30	239	6.0	8.48	293.4		
01/17/2011	18:48:00	238	6.0	8.49	296.4		
01/17/2011	18:48:30	242	5.9	8.57	299.4		
01/17/2011	18:49:00	276	5.9	8.61	302.3		
01/17/2011	18:49:30	257	5.8	8.64	305.2		
01/17/2011	18:50:00	211	3.8	8.56	307.4		
01/17/2011	18:50:30	172	3.9	8.50	309.3		
01/17/2011	18:51:00	180	4.0	8.66	311.3		
01/17/2011	18:51:19						Reset Total, Vol = 312.54 bbl
01/17/2011	18:51:19	200	4.0	8.78	312.5		
01/17/2011	18:51:21						Reset Total, Vol = 0.13 bbl
01/17/2011	18:51:21	210	4.0	8.80	312.7		
01/17/2011	18:51:30	207	4.0	8.85	313.3		
01/17/2011	18:52:00	373	6.2	9.03	315.6		
01/17/2011	18:52:30	352	6.2	9.10	318.7		
01/17/2011	18:53:00	377	6.3	9.15	321.8		
01/17/2011	18:53:30	374	6.4	9.24	324.9		
01/17/2011	18:54:00	340	6.4	9.32	328.1		
01/17/2011	18:54:30	309	6.3	9.39	331.3		
01/17/2011	18:55:00	340	6.4	9.44	334.5		
01/17/2011	18:55:02						Start Cement Slurry
01/17/2011	18:55:02	356	6.4	9.45	334.7		
01/17/2011	18:55:03						497bbbls 9 ppg
01/17/2011	18:55:03						SF=50.6%
01/17/2011	18:55:03						Take Wet&Dry Sample
01/17/2011	18:55:03						Sample= 9ppg
01/17/2011	18:55:03						Good Returns
01/17/2011	18:55:03						Cement In All
01/17/2011	18:55:03						Of Slurry
01/17/2011	18:55:03	350	6.4	9.45	334.8		
01/17/2011	18:55:30	376	6.4	9.48	337.7		
01/17/2011	18:56:00	348	6.4	9.50	340.9		

Well			Field		Job Start Jan/17/2011	Customer	Job Number
Date	Time 24-hr clock	Treating Pressure PSI	Flow Rate B/M	Density LB/G	Volume BBL	Message	
01/17/2011	18:56:30	384	6.4	9.53	344.0		
01/17/2011	18:57:00	346	6.4	9.53	347.2		
01/17/2011	18:57:30	330	6.4	9.54	350.4		
01/17/2011	18:58:00	352	6.4	9.53	353.6		
01/17/2011	18:58:30	355	6.4	9.52	356.8		
01/17/2011	18:59:00	341	6.4	9.53	360.0		
01/17/2011	18:59:30	361	6.4	9.53	363.3		
01/17/2011	19:00:00	356	6.4	9.52	366.5		
01/17/2011	19:00:30	484	8.0	9.53	369.8		
01/17/2011	19:01:00	506	8.3	9.52	373.9		
01/17/2011	19:01:30	485	8.3	9.52	378.0		
01/17/2011	19:02:00	471	8.3	9.51	382.2		
01/17/2011	19:02:30	477	8.3	9.50	386.3		
01/17/2011	19:03:00	494	8.3	9.50	390.5		
01/17/2011	19:03:30	478	8.3	9.50	394.6		
01/17/2011	19:04:00	459	8.3	9.50	398.8		
01/17/2011	19:04:30	475	8.3	9.52	402.9		
01/17/2011	19:05:00	478	8.3	9.52	407.1		
01/17/2011	19:05:30	462	8.3	9.51	411.3		
01/17/2011	19:06:00	483	8.3	9.50	415.4		
01/17/2011	19:06:30	487	8.3	9.51	419.6		
01/17/2011	19:07:00	466	8.3	9.51	423.7		
01/17/2011	19:07:30	464	8.3	9.50	427.9		
01/17/2011	19:08:00	426	8.3	9.50	432.1		
01/17/2011	19:08:30	431	8.3	9.50	436.2		
01/17/2011	19:09:00	399	8.3	9.49	440.4		
01/17/2011	19:09:30	419	8.3	9.48	444.6		
01/17/2011	19:10:00	404	8.3	9.48	448.7		
01/17/2011	19:10:30	397	8.3	9.48	452.9		
01/17/2011	19:11:00	408	8.3	9.47	457.1		
01/17/2011	19:11:30	387	8.3	9.49	461.2		
01/17/2011	19:12:00	398	8.3	9.51	465.4		
01/17/2011	19:12:30	413	8.3	9.52	469.6		
01/17/2011	19:13:00	404	8.4	9.54	473.7		
01/17/2011	19:13:30	405	8.3	9.55	477.9		
01/17/2011	19:14:00	421	8.3	9.55	482.1		
01/17/2011	19:14:30	421	8.3	9.55	486.2		
01/17/2011	19:15:00	399	8.3	9.53	490.4		
01/17/2011	19:15:30	403	8.3	9.53	494.6		
01/17/2011	19:16:00	415	8.4	9.54	498.8		
01/17/2011	19:16:30	380	8.4	9.52	502.9		
01/17/2011	19:17:00	365	8.3	9.51	507.1		
01/17/2011	19:17:30	394	8.4	9.50	511.3		
01/17/2011	19:18:00	427	8.3	9.49	515.5		
01/17/2011	19:18:30	406	8.4	9.45	519.6		
01/17/2011	19:19:00	422	8.4	9.45	523.8		
01/17/2011	19:19:30	449	8.4	9.44	528.0		
01/17/2011	19:20:00	402	8.4	9.43	532.2		
01/17/2011	19:20:30	409	8.4	9.43	536.3		
01/17/2011	19:21:00	433	8.4	9.44	540.5		
01/17/2011	19:21:30	421	8.4	9.43	544.7		
01/17/2011	19:22:00	436	8.4	9.42	548.9		
01/17/2011	19:22:30	435	8.3	9.42	553.0		
01/17/2011	19:23:00	423	8.3	9.41	557.2		
01/17/2011	19:23:30	437	8.3	9.40	561.4		

Well			Field		Job Start Jan/17/2011	Customer	Job Number
Date	Time 24-hr clock	Treating Pressure PSI	Flow Rate B/M	Density LB/G	Volume BBL	Message	
01/17/2011	19:24:00	418	8.3	9.39	565.6		
01/17/2011	19:24:30	407	8.3	9.39	569.7		
01/17/2011	19:25:00	402	8.3	9.39	573.9		
01/17/2011	19:25:30	416	8.3	9.41	578.1		
01/17/2011	19:26:00	408	8.3	9.42	582.2		
01/17/2011	19:26:30	410	8.3	9.44	586.4		
01/17/2011	19:27:00	433	8.3	9.46	590.5		
01/17/2011	19:27:30	430	8.3	9.46	594.7		
01/17/2011	19:28:00	416	8.3	9.47	598.9		
01/17/2011	19:28:30	427	8.3	9.47	603.0		
01/17/2011	19:29:00	432	8.3	9.46	607.2		
01/17/2011	19:29:30	411	8.3	9.46	611.3		
01/17/2011	19:30:00	412	8.3	9.46	615.5		
01/17/2011	19:30:30	415	8.3	9.46	619.6		
01/17/2011	19:31:00	392	8.3	9.48	623.7		
01/17/2011	19:31:30	407	8.3	9.49	627.9		
01/17/2011	19:32:00	419	8.3	9.51	632.0		
01/17/2011	19:32:30	380	8.3	9.52	636.2		
01/17/2011	19:33:00	392	8.3	9.52	640.3		
01/17/2011	19:33:30	432	8.3	9.50	644.5		
01/17/2011	19:34:00	407	8.2	9.48	648.6		
01/17/2011	19:34:30	407	8.2	9.47	652.7		
01/17/2011	19:35:00	412	8.2	9.47	656.8		
01/17/2011	19:35:30	401	8.2	9.46	661.0		
01/17/2011	19:36:00	401	8.2	9.47	665.1		
01/17/2011	19:36:30	405	8.2	9.47	669.2		
01/17/2011	19:37:00	407	8.2	9.48	673.3		
01/17/2011	19:37:30	400	8.2	9.49	677.4		
01/17/2011	19:38:00	411	8.2	9.50	681.5		
01/17/2011	19:38:30	417	8.2	9.51	685.7		
01/17/2011	19:39:00	406	8.2	9.52	689.8		
01/17/2011	19:39:30	432	8.2	9.52	693.9		
01/17/2011	19:40:00	440	8.2	9.51	698.0		
01/17/2011	19:40:30	412	8.2	9.53	702.1		
01/17/2011	19:41:00	426	8.2	9.53	706.3		
01/17/2011	19:41:30	455	8.2	9.54	710.4		
01/17/2011	19:42:00	454	8.2	9.55	714.5		
01/17/2011	19:42:30	463	8.2	9.55	718.6		
01/17/2011	19:43:00	484	8.2	9.54	722.7		
01/17/2011	19:43:30	488	8.2	9.52	726.8		
01/17/2011	19:44:00	486	8.2	9.49	730.9		
01/17/2011	19:44:30	499	8.2	9.49	735.0		
01/17/2011	19:45:00	503	8.2	9.49	739.1		
01/17/2011	19:45:30	465	8.2	9.50	743.2		
01/17/2011	19:46:00	492	8.2	9.51	747.3		
01/17/2011	19:46:30	495	8.2	9.50	751.4		
01/17/2011	19:47:00	483	8.2	9.49	755.5		
01/17/2011	19:47:30	502	8.3	9.46	759.6		
01/17/2011	19:48:00	498	8.3	9.45	763.8		
01/17/2011	19:48:30	503	8.3	9.45	767.9		
01/17/2011	19:49:00	506	8.3	9.45	772.0		
01/17/2011	19:49:30	498	8.3	9.44	776.2		
01/17/2011	19:50:00	511	8.3	9.45	780.3		
01/17/2011	19:50:30	528	8.3	9.43	784.5		
01/17/2011	19:50:53					End Cement Slurry	

Well			Field		Job Start Jan/17/2011	Customer	Job Number
Date	Time 24-hr clock	Treating Pressure PSI	Flow Rate B/M	Density LB/G	Volume BBL	Message	
01/17/2011	19:50:53	520	8.3	9.44	787.7		
01/17/2011	19:51:00	548	8.3	9.43	788.6		
01/17/2011	19:51:30	546	8.3	9.43	792.8		
01/17/2011	19:52:00	526	8.3	9.44	797.0		
01/17/2011	19:52:30	528	8.2	9.48	801.1		
01/17/2011	19:53:00	501	8.3	9.51	805.2		
01/17/2011	19:53:30	499	8.3	9.52	809.4		
01/17/2011	19:54:00	348	8.4	8.40	813.6		
01/17/2011	19:54:30	339	8.4	8.39	817.8		
01/17/2011	19:55:00	426	8.4	8.37	822.0		
01/17/2011	19:55:30	461	8.4	8.37	826.2		
01/17/2011	19:56:00	406	8.4	8.37	830.3		
01/17/2011	19:56:30	419	8.4	8.38	834.5		
01/17/2011	19:56:41					Drop Top Plug	
01/17/2011	19:56:41					Start Displacement	
01/17/2011	19:56:41	423	8.4	8.39	836.1		
01/17/2011	19:56:43					Reset Total, Vol = 523.66 bbl	
01/17/2011	19:56:43	399	8.4	8.38	836.3		
01/17/2011	19:56:45					Pump 231bbbls Fresh H2o	
01/17/2011	19:56:45	426	8.4	8.37	836.6		
01/17/2011	19:57:00	477	8.3	8.37	838.7		
01/17/2011	19:57:30	465	8.4	8.37	842.9		
01/17/2011	19:58:00	458	8.4	8.37	847.1		
01/17/2011	19:58:30	468	8.4	8.38	851.3		
01/17/2011	19:59:00	475	8.3	8.37	855.4		
01/17/2011	19:59:30	470	8.4	8.37	859.6		
01/17/2011	20:00:00	472	8.4	8.57	863.8		
01/17/2011	20:00:30	476	8.3	8.56	868.0		
01/17/2011	20:01:00	470	8.3	8.52	872.1		
01/17/2011	20:01:30	472	8.2	8.46	876.3		
01/17/2011	20:02:00	499	8.3	8.41	880.4		
01/17/2011	20:02:30	489	8.3	8.40	884.5		
01/17/2011	20:02:50					Got Cement	
01/17/2011	20:02:50	492	8.4	8.41	887.3		
01/17/2011	20:02:51					To Surface	
01/17/2011	20:02:51	481	8.4	8.40	887.5		
01/17/2011	20:03:00	496	8.4	8.40	888.7		
01/17/2011	20:03:17					160bbbls Back	
01/17/2011	20:03:17	481	8.4	8.34	891.1		
01/17/2011	20:03:30	503	8.4	8.36	892.9		
01/17/2011	20:04:00	499	8.4	8.37	897.1		
01/17/2011	20:04:30	501	8.4	8.37	901.3		
01/17/2011	20:05:00	505	8.3	8.37	905.5		
01/17/2011	20:05:30	503	8.4	8.37	909.7		
01/17/2011	20:06:00	512	8.4	8.37	913.8		
01/17/2011	20:06:30	514	8.3	8.37	918.0		
01/17/2011	20:07:00	508	8.4	8.37	922.2		
01/17/2011	20:07:30	519	8.3	8.37	926.4		
01/17/2011	20:08:00	515	8.4	8.37	930.6		
01/17/2011	20:08:30	521	8.3	8.37	934.7		
01/17/2011	20:09:00	516	8.3	8.37	938.9		
01/17/2011	20:09:30	523	8.3	8.37	943.1		
01/17/2011	20:10:00	534	8.4	8.37	947.2		
01/17/2011	20:10:30	530	8.4	8.37	951.4		
01/17/2011	20:11:00	541	8.3	8.37	955.6		

Well			Field		Job Start Jan/17/2011	Customer	Job Number
Date	Time 24-hr clock	Treating Pressure PSI	Flow Rate B/M	Density LB/G	Volume BBL	Message	
01/17/2011	20:11:30	529	8.3	8.37	959.8		
01/17/2011	20:12:00	537	8.3	8.37	963.9		
01/17/2011	20:12:30	530	8.3	8.37	968.1		
01/17/2011	20:13:00	526	8.3	8.37	972.3		
01/17/2011	20:13:30	523	8.3	8.37	976.5		
01/17/2011	20:14:00	529	8.3	8.37	980.6		
01/17/2011	20:14:30	524	8.3	8.37	984.8		
01/17/2011	20:15:00	533	8.3	8.37	989.0		
01/17/2011	20:15:30	539	8.3	8.37	993.1		
01/17/2011	20:16:00	549	8.4	8.37	997.3		
01/17/2011	20:16:30	451	6.5	8.37	1000.8		
01/17/2011	20:17:00	460	6.5	8.37	1004.0		
01/17/2011	20:17:30	421	6.5	8.37	1007.2		
01/17/2011	20:18:00	416	6.5	8.37	1010.5		
01/17/2011	20:18:30	461	6.5	8.37	1013.7		
01/17/2011	20:19:00	467	6.5	8.37	1016.9		
01/17/2011	20:19:30	438	6.5	8.37	1020.2		
01/17/2011	20:20:00	438	6.5	8.37	1023.4		
01/17/2011	20:20:30	417	6.5	8.37	1026.6		
01/17/2011	20:21:00	401	4.6	8.37	1029.5		
01/17/2011	20:21:30	334	4.6	8.37	1031.8		
01/17/2011	20:22:00	343	4.6	8.37	1034.0		
01/17/2011	20:22:30	330	4.6	8.37	1036.3		
01/17/2011	20:23:00	265	3.6	8.37	1038.6		
01/17/2011	20:23:30	268	2.3	8.37	1039.8		
01/17/2011	20:24:00	282	2.3	8.37	1040.9		
01/17/2011	20:24:30	247	2.3	8.37	1042.1		
01/17/2011	20:25:00	276	2.3	8.37	1043.2		
01/17/2011	20:25:30	259	2.3	8.37	1044.4		
01/17/2011	20:26:00	275	2.3	8.37	1045.5		
01/17/2011	20:26:30	245	2.3	8.37	1046.7		
01/17/2011	20:27:00	408	2.3	8.37	1047.8		
01/17/2011	20:27:30	831	0.0	8.37	1048.4		
01/17/2011	20:27:59					Bump Top Plug	
01/17/2011	20:27:59	828	0.0	8.37	1048.4		
01/17/2011	20:28:00					Bump Tob 800psi	
01/17/2011	20:28:00	828	0.0	8.37	1048.4		
01/17/2011	20:28:29					End Displacement	
01/17/2011	20:28:29	824	0.0	8.37	1048.4		
01/17/2011	20:28:30	825	0.0	8.37	1048.4		
01/17/2011	20:28:32					Floats Held	
01/17/2011	20:28:32	825	0.0	8.37	1048.4		
01/17/2011	20:29:00	54	0.0	8.37	1048.4		
01/17/2011	20:29:30	-2	0.0	8.37	1048.4		
01/17/2011	20:30:00	-1	0.0	8.37	1048.4		
01/17/2011	20:30:30	-0	0.0	8.37	1048.4		
01/17/2011	20:31:00	2	0.0	8.37	1048.4		
01/17/2011	20:31:30	3	0.0	8.37	1048.4		
01/17/2011	20:32:00	3	0.0	8.37	1048.4		
01/17/2011	20:32:30	3	0.0	8.37	1048.4		
01/17/2011	20:33:00	1	0.0	8.37	1048.5		
01/17/2011	20:33:30	1	0.0	8.37	1048.5		
01/17/2011	20:34:00	47	0.0	8.37	1048.5		
01/17/2011	20:34:30	-1	0.0	8.37	1048.5		
01/17/2011	20:35:00	-0	0.0	8.37	1048.5		

Well		Field		Job Start Jan/17/2011		Customer	Job Number
Date	Time 24-hr clock	Treating Pressure PSI	Flow Rate B/M	Density LB/G	Volume BBL	Message	
01/17/2011	20:35:30	-1	0.0	8.37	1048.5		
01/17/2011	20:36:00	-1	0.0	8.37	1048.5		
01/17/2011	20:36:30	-1	0.0	8.37	1048.5		
01/17/2011	20:37:00	-1	0.0	8.37	1048.5		
01/17/2011	20:37:30	-0	0.0	8.37	1048.5		
01/17/2011	20:38:00	-1	0.0	8.38	1048.5		
01/17/2011	20:38:30	-0	0.0	8.37	1048.5		
01/17/2011	20:39:00	24	0.0	8.37	1048.6		
01/17/2011	20:39:30	204	0.0	8.37	1048.6		
01/17/2011	20:40:00	110	0.0	8.37	1048.6		
01/17/2011	20:41:00	165	5.6	8.38	1050.7		
01/17/2011	20:41:30	216	5.7	8.38	1052.4		
01/17/2011	20:42:00	10	0.6	8.39	1054.1		
01/17/2011	20:42:30	12	0.3	8.44	1054.3		
01/17/2011	20:43:00	10	0.2	8.46	1054.4		
01/17/2011	20:43:30	7	0.2	8.45	1054.5		
01/17/2011	20:44:00	11	0.2	8.43	1054.6		
01/17/2011	20:44:30	11	0.2	8.43	1054.7		
01/17/2011	20:45:00	15	0.3	8.41	1054.9		
01/17/2011	20:45:30	12	0.4	8.41	1055.0		
01/17/2011	20:46:00	46	0.8	8.39	1055.3		
01/17/2011	20:46:30	46	2.5	8.36	1056.5		
01/17/2011	20:47:00	11	0.1	8.40	1056.8		
01/17/2011	20:47:30	12	0.7	8.41	1056.9		
01/17/2011	20:48:00	3	0.4	8.40	1057.2		
01/17/2011	20:48:30	4	0.3	8.39	1057.3		
01/17/2011	20:49:00	3	0.4	8.39	1057.5		
01/17/2011	20:49:30	4	0.4	8.40	1057.7		
01/17/2011	20:50:00	4	0.4	8.39	1057.9		
01/17/2011	20:50:30	4	0.3	8.39	1058.1		
01/17/2011	20:51:00	4	0.3	8.39	1058.3		
01/17/2011	20:51:30	3	0.3	8.39	1058.4		
01/17/2011	20:52:00	3	0.3	8.39	1058.6		
01/17/2011	20:52:30	4	0.3	8.39	1058.7		
01/17/2011	20:52:39						Pump 10bbls
01/17/2011	20:52:39						Down Parasite
01/17/2011	20:52:39	3	0.2	8.39	1058.7		
01/17/2011	20:53:00	3	0.2	8.39	1058.8		
01/17/2011	20:53:30	3	0.2	8.39	1058.9		
01/17/2011	20:54:00	3	0.2	8.39	1059.0		
01/17/2011	20:54:30	2	0.2	8.39	1059.1		
01/17/2011	20:55:00	3	0.1	8.39	1059.2		
01/17/2011	20:55:30	3	0.1	8.39	1059.2		
01/17/2011	20:56:00	3	0.1	8.39	1059.3		
01/17/2011	20:56:30	3	0.1	8.39	1059.3		
01/17/2011	20:57:00	3	0.1	8.39	1059.4		
01/17/2011	20:57:30	2	0.1	8.39	1059.5		
01/17/2011	20:58:00	2	0.1	8.39	1059.5		
01/17/2011	20:58:30	2	0.1	8.39	1059.6		

Well	Field	Job Start Jan/17/2011	Customer	Job Number
-------------	--------------	---------------------------------	-----------------	-------------------

Post Job Summary

Average Pump Rates,					Volume of Fluid Injected,			
Slurry	N2	Mud	Maximum Rate	Total Slurry	Mud	Spacer	N2	
Treating Pressure Summary,					Breakdown Fluid			
Maximum	Final	Average	Bump Plug to	Breakdown	Type	Volume	Density	
Avg. N2 Percent	Designed Slurry Volume	Displacement	Mix Water Temp	Cement Circulated to Surface? <input type="checkbox"/>	Volume		To	
Customer or Authorized Representative				Schlumberger Supervisor	Washed Thru Perfs <input type="checkbox"/>	Circulation Lost <input type="checkbox"/>	Job Completed <input type="checkbox"/>	
					-	-	-	