

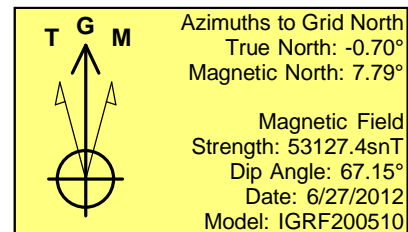
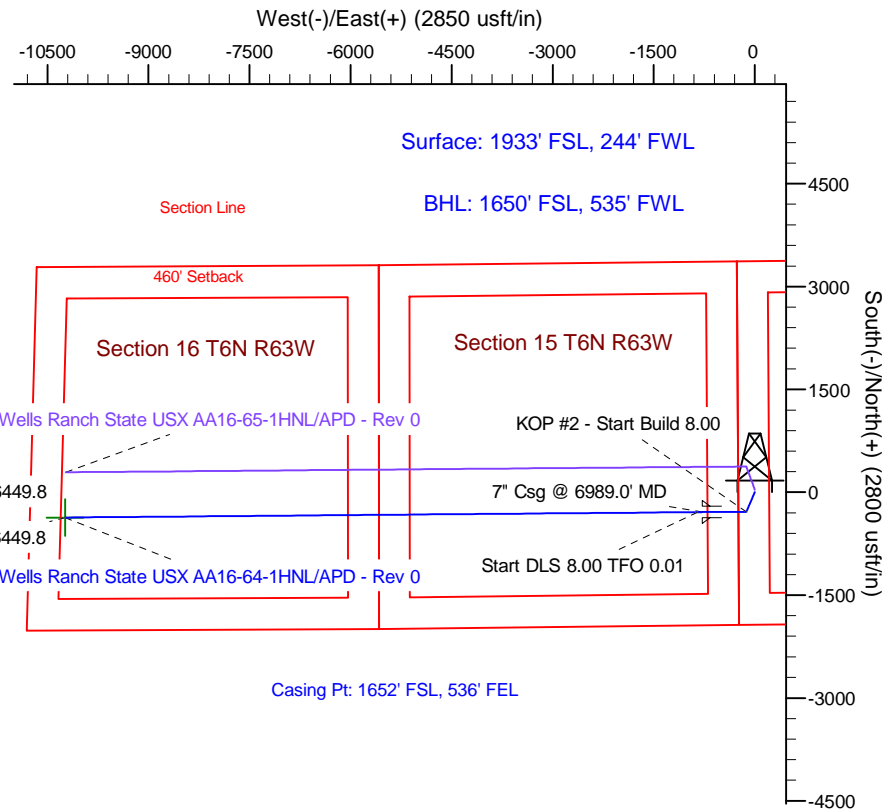
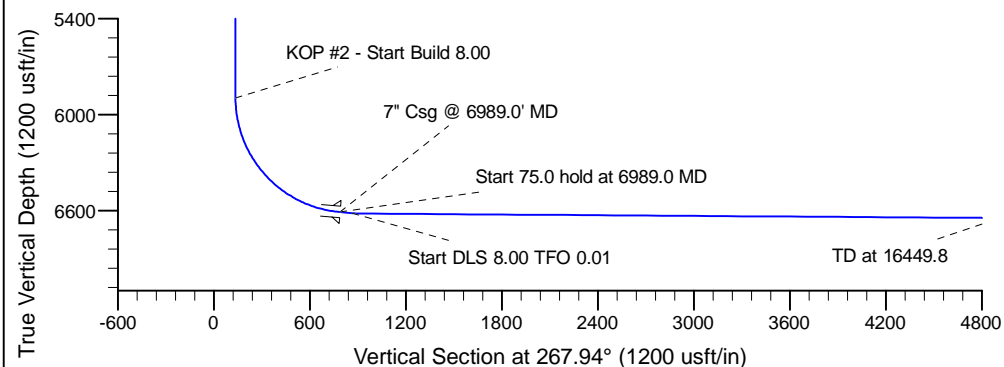
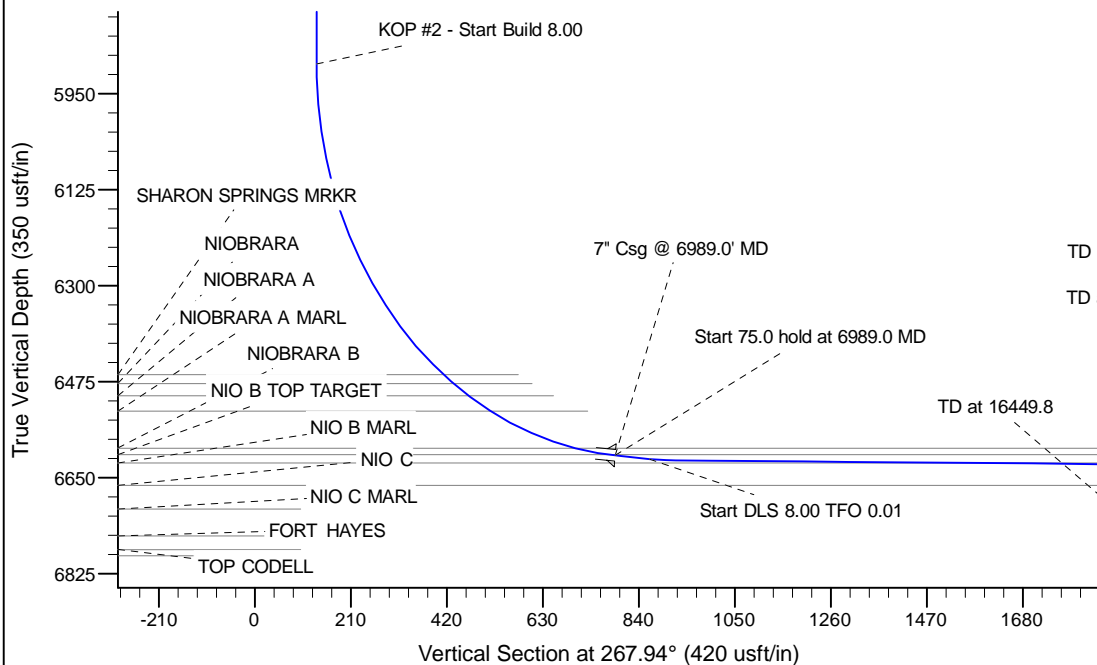
Project: Wattenberg Field
Site: AA (Sec.14-T06N-R63W) Weld County, CO
Well: Wells Ranch State USX AA16-64-1HNL
Wellbore: Original Drilling
Design: APD - Rev 0

Northern Region Drilling

Geodetic System: US State Plane 1983
Datum: North American Datum 1983
Ellipsoid: GRS 1980
Zone: Colorado Northern Zone
System Datum: Mean Sea Level

SECTION DETAILS

Sec	MD	Inc	Azi	TVD	+N/-S	+E/-W	Dleg	TFace	VSec	Target
1	0.0	0.00	0.00	0.0	0.0	0.0	0.00	0.00	0.0	
2	1800.0	0.00	0.00	1800.0	0.0	0.0	0.00	0.00	0.0	
3	2321.4	13.03	203.83	2316.9	-54.0	-23.9	2.50	203.83	25.8	
4	3169.4	13.03	203.83	3143.1	-229.0	-101.1	0.00	0.00	109.3	
5	3690.8	0.00	0.00	3660.0	-283.0	-125.0	2.50	180.00	135.1	
6	5926.5	0.00	0.00	5895.7	-283.0	-125.0	0.00	0.00	135.1	
7	6989.0	85.00	269.52	6609.1	-288.5	-778.8	8.00	269.52	788.6	
8	7064.0	85.00	269.52	6615.7	-289.1	-853.5	0.00	0.00	863.3	
9	7121.5	89.60	269.52	6618.4	-289.6	-910.9	8.00	0.01	920.7	
10	16449.8	89.60	269.52	6683.5	-367.5	-10238.7	0.00	0.00	10245.3	AA16-64-1HNL BHL 1650'FSL, 535'FWL



WELL DETAILS: Wells Ranch State USX AA16-64-1HNL

Ground Level: 4756.0		
Northing	Easting	Latitude
1421242.11	3302472.12	40.484620
		Longitude
		-104.412580

Plan: APD - Rev 0 (Wells Ranch State USX AA16-64-1HNL/Original Drilling)

Created By: Carrie Willers	Date: 16:27, June 27 2012
Checked: _____	Date: _____
Reviewed: _____	Date: _____
Approved: _____	Date: _____