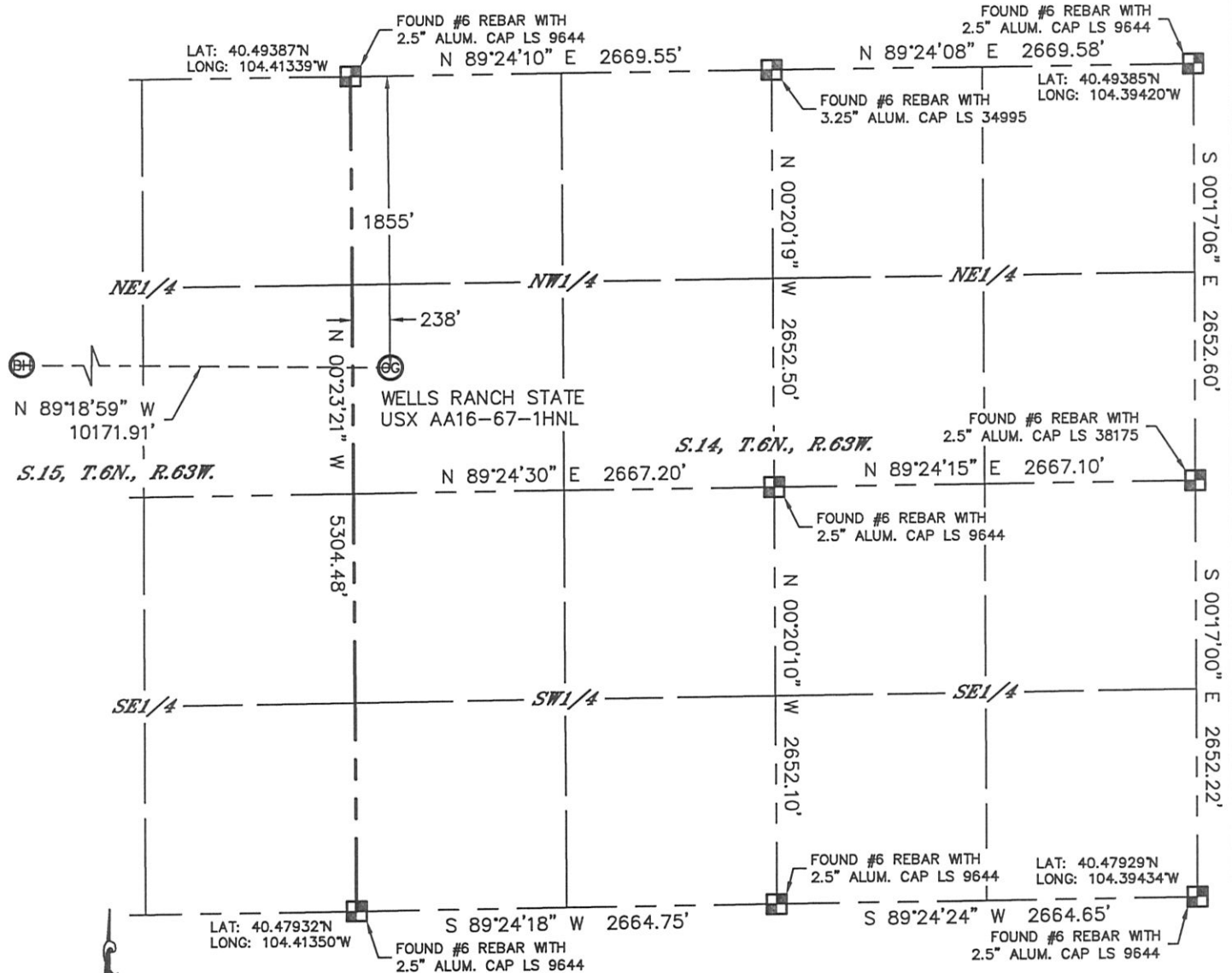


Lat40°, Inc. 1635 Foxtrail Drive, Suite 325 Loveland, CO 970-776-3321

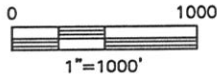
WELL LOCATION CERTIFICATE

THIS MAP DOES NOT REPRESENT A BOUNDARY SURVEY

SECTION: 14
TOWNSHIP: 6N
RANGE: 63W



In accordance with a request from Matt Verbit with Noble Energy Inc. Lat40°, Inc. has determined the surface location of the WELLS RANCH STATE USX AA16-67-1HNL to be 1855' from the NORTH line and 238' from the WEST line as measured at right angles from the section lines of Section 14, Township 6 North, Range 63 West and the bottom hole to be 1650' from the NORTH line and 535' from the WEST line as measured at right angles from the section lines of Section 16, Township 6 North, Range 63 West of the Sixth Principal Meridian, County of Weld, State of Colorado. I hereby state that this Well Location Certificate was prepared by me, or under my direct supervision, that the fieldwork was completed on 5/31/2012, for and on behalf of Noble Energy Inc. That this is not a Land Survey Plat or an Improvement Survey Plat, and that it is not to be relied upon for establishment of fence, building, or other future improvement lines.



NOTE:

- 1) Bearings shown are Grid Bearings of the Colorado State Plane Coordinate System, North Zone, North American Datum 1983/2007. The lineal dimensions as contained herein are based upon the "U.S. Survey Foot."
- 2) Ground elevations are based on an observed GPS elevation (NAVD 1988 DATUM).
- 3) NEAREST EXISTING WELL: NONE WITHIN SECTION
- 4) IMPROVEMENTS: See LOCATION DRAWING for all visible improvements within 400' of disturbed area.
- 5) SURFACE USE: RANGELAND
- 6) INSTRUMENT OPERATOR: ADAM KELLY

NOTE

According to Colorado law, you must commence any legal action based upon any defect in this W.L.C. within three years after you discover such defect. In no event, may any action based upon any defect in this survey be commenced more than ten years after the date of the certificate shown hereon. (13-80-105 C.R.S.)

LEGEND

- = ALIQUOT MONUMENT AS DESCRIBED
- = CALCULATED POSITION

SURFACE LOCATION

LAT: 40.48878°N
LONG: 104.41257°W
PDOP: 1.4
ELEV: 4778'
1/4, 1/4: SW1/4, NW1/4
NEAREST PROPERTY LINE: 238' WEST

BOTTOM HOLE

LAT: 40.48945°N
LONG: 104.44912°W



SHEET 1 OF 3

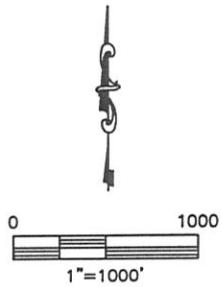
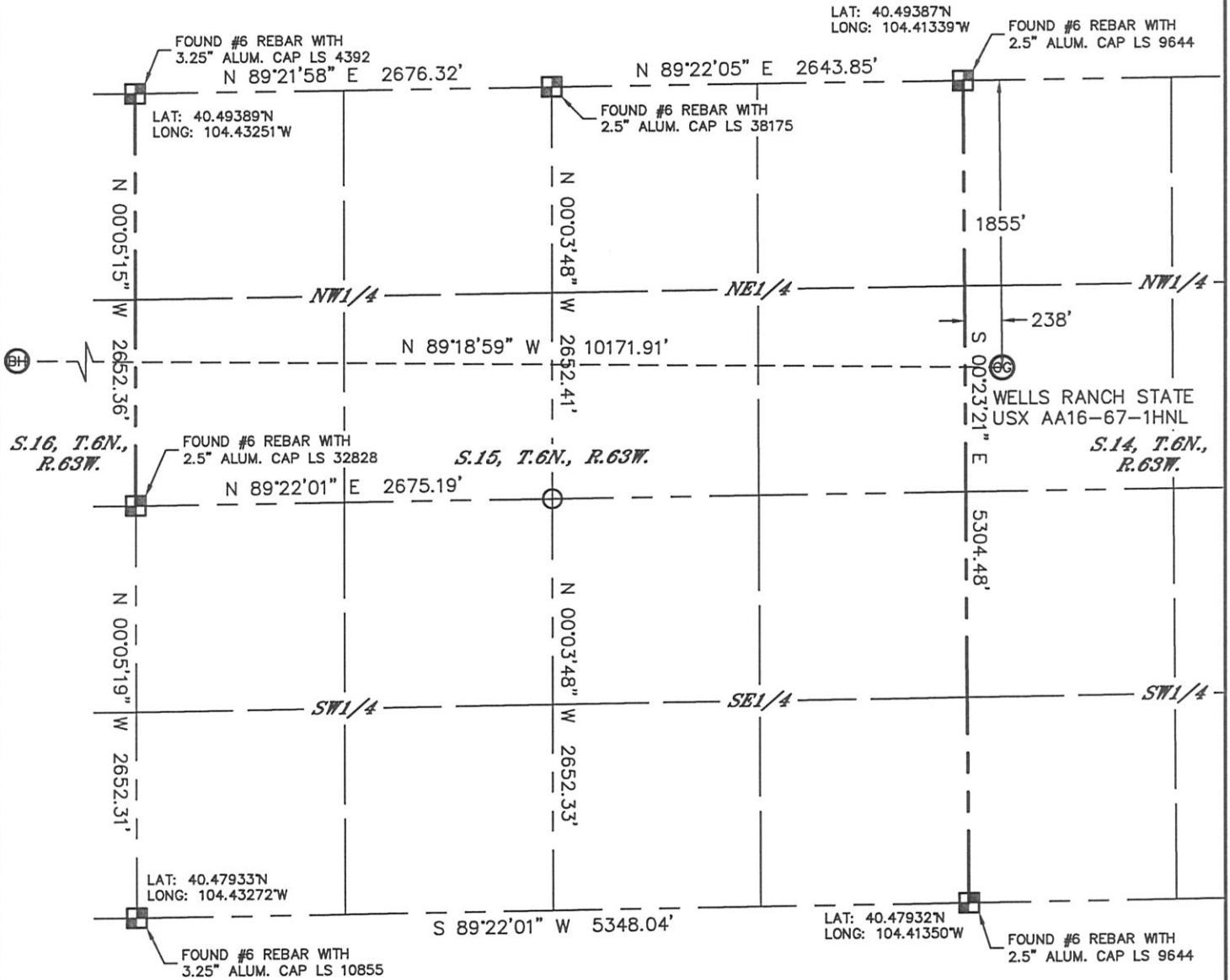
Brian T. Brinkman-On Behalf of Lat40°, Inc.
Colorado Licensed Professional Land Surveyor No. 38175
DATE: 6/4/2012
PROJECT#: 2012075

Lat40°, Inc. 1635 Foxtrail Drive, Suite 325 Loveland, CO 970-776-3321

WELL LOCATION CERTIFICATE

THIS MAP DOES NOT REPRESENT A BOUNDARY SURVEY

SECTION: 14
TOWNSHIP: 6N
RANGE: 63W



NOTE
According to Colorado law, you must commence any legal action based upon any defect in this W.L.C. within three years after you discover such defect. In no event, may any action based upon any defect in this survey be commenced more than ten years after the date of the certificate shown hereon. (13-80-105 C.R.S.)

LEGEND
[Square with cross] = ALIQUOT MONUMENT AS DESCRIBED
[Circle] = CALCULATED POSITION

SHEET 2 OF 3

Brian T. Brinkman-On Demand Land Survey, Inc.
Colorado Licensed Professional Land Surveyor No. 38175
DATE: 6/4/2012
PROJECT#: 2012075



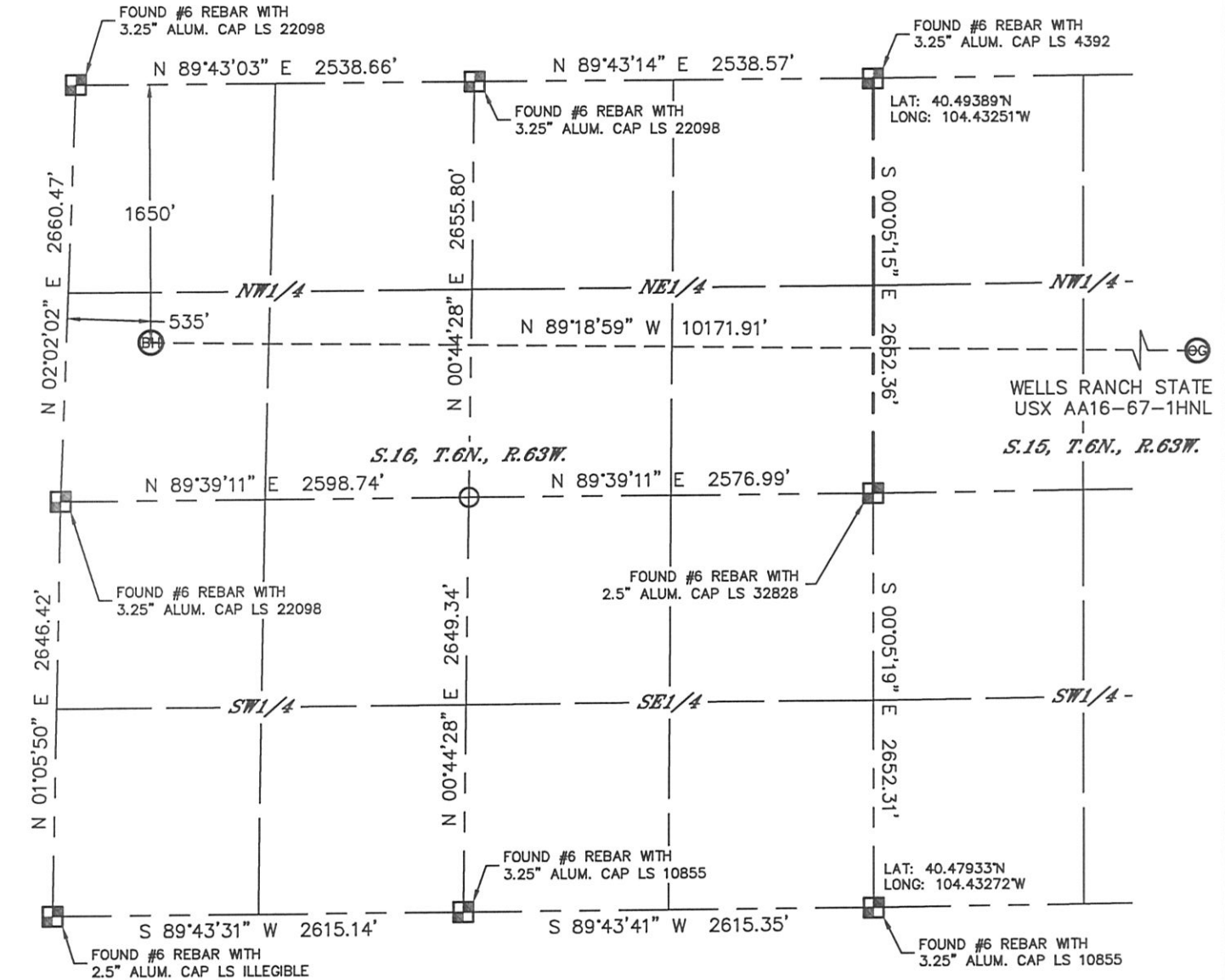
Lat40°, Inc. 1635 Foxtrail Drive, Suite 325 Loveland, CO 970-776-3321

WELL LOCATION CERTIFICATE

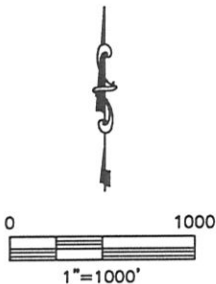
SECTION: 14
TOWNSHIP: 6N
RANGE: 63W

LAT: 40.49399°N
LONG: 104.45076°W

THIS MAP DOES NOT REPRESENT A BOUNDARY SURVEY





LAT: 40.47944°N
LONG: 104.45151°W



NOTE

According to Colorado law, you must commence any legal action based upon any defect in this W.L.C. within three years after you discover such defect. In no event, may any action based upon any defect in this survey be commenced more than ten years after the date of the certificate shown hereon. (13-80-105 C.R.S.)

LEGEND

-  = ALIQUOT MONUMENT AS DESCRIBED
-  = CALCULATED POSITION

SHEET 3 OF 3

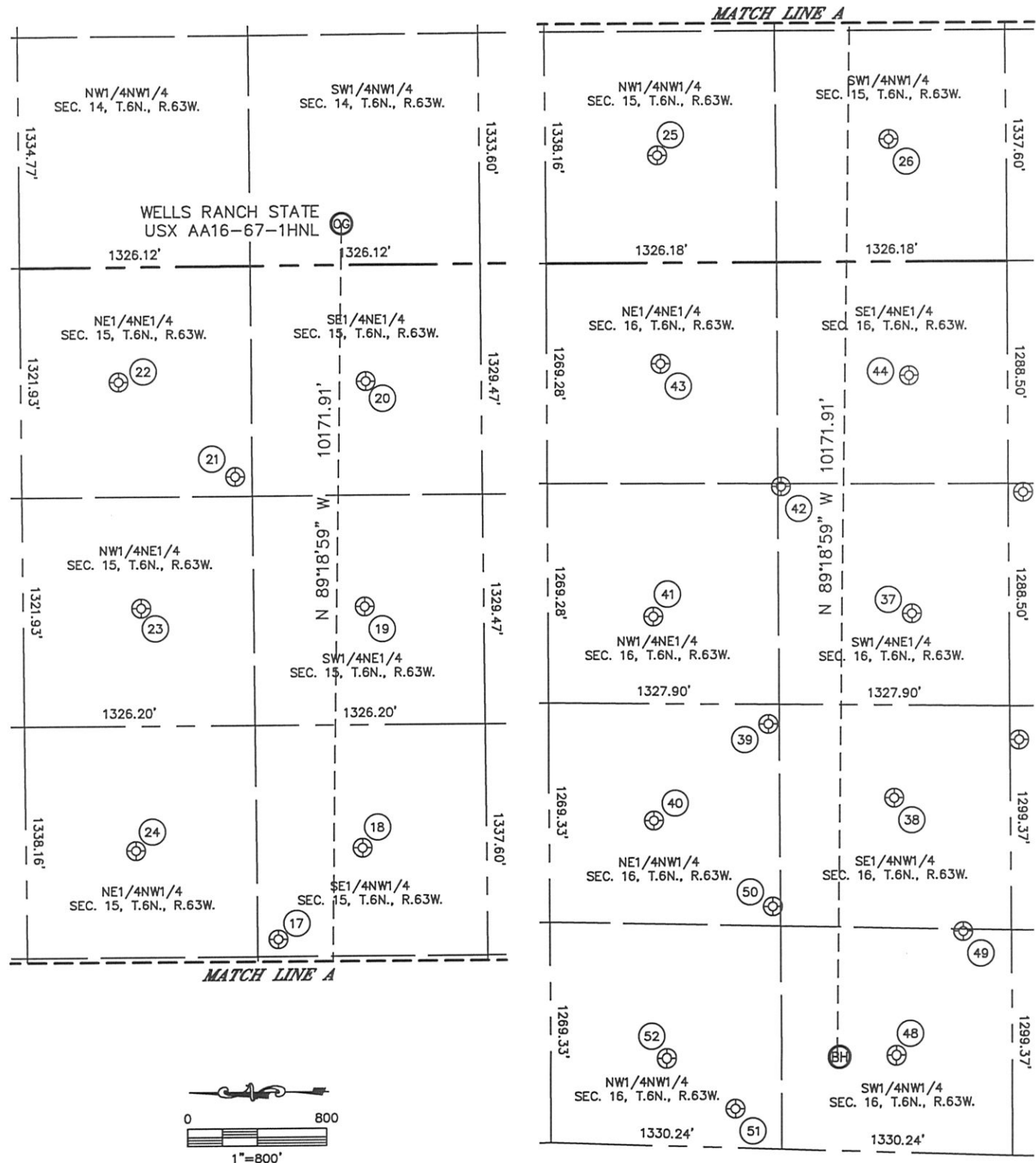
Brian T. Brinkman-On Demand Land Survey, Inc.
Colorado Licensed Professional Land Surveyor No. 38175
DATE: 6/4/2012
PROJECT#: 2012075



SITE SKETCH

WELLS RANCH STATE USX AA16-67-1HNL
(1 OF 2)

SECTION: 14
TOWNSHIP: 6N
RANGE: 63W



SITE SKETCH

WELLS RANCH STATE USX AA16-67-1HNL
(2 OF 2)

SECTION: 14
TOWNSHIP: 6N
RANGE: 63W

17

WELLS RANCH USX AA15-19
SE1/4NW1/4
1444' FNL
1438' FWL
LAT-40.48992°N
LONG-104.42740°W
PDOP: 1.4
ELEV: 4729'

18

WELLS RANCH USX AA15-06
SE1/4NW1/4
1937' FNL
1964' FWL
LAT-40.48857°N
LONG-104.42553°W
PDOP: 1.4
ELEV: 4742'

19

WELLS RANCH USX AA15-07
SW1/4NE1/4
1966' FNL
1972' FEL
LAT-40.48849°N
LONG-104.42052°W
PDOP: 1.6
ELEV: 4755'

20

WELLS RANCH USX AA15-08
SE1/4NE1/4
1985' FNL
671' FEL
LAT-40.48843°N
LONG-104.41584°W
PDOP: 1.6
ELEV: 4776'

21

WELLS RANCH USX AA15-17
NE1/4NE1/4
1228' FNL
1212' FEL
LAT-40.49051°N
LONG-104.41777°W
PDOP: 1.8
ELEV: 4774'

22

WELLS RANCH USX AA15-01
NE1/4NE1/4
562' FNL
661' FEL
LAT-40.49233°N
LONG-104.41578°W
PDOP: 1.7
ELEV: 4784'

23

WELLS RANCH USX AA15-02
NW1/4NE1/4
677' FNL
1967' FEL
LAT-40.49202°N
LONG-104.42048°W
PDOP: 1.7
ELEV: 4751'

24

WELLS RANCH USX AA15-03
NE1/4NW1/4
632' FNL
1957' FWL
LAT-40.49215°N
LONG-104.42550°W
PDOP: 1.8
ELEV: 4718'

25

WELLS RANCH USX AA15-04
NW1/4NW1/4
644' FNL
621' FWL
LAT-40.49212°N
LONG-104.43031°W
PDOP: 1.9
ELEV: 4699'

26

WELLS RANCH USX AA15-05
SW1/4NW1/4
1978' FNL
708' FWL
LAT-40.48846°N
LONG-104.43005°W
PDOP: 1.9
ELEV: 4705'

37

BASHOR STATE AA16-07
SW1/4NE1/4
2096' FNL
2038' FEL
LAT-40.48818°N
LONG-104.43992°W
PDOP: 2.1
ELEV: 4685'

38

BASHOR STATE AA16-06
SE1/4NW1/4
1988' FNL
2045' FWL
LAT-40.48850°N
LONG-104.44375°W
PDOP: 2.1
ELEV: 4684'

39

BASHOR STATE AA16-18
NE1/4NW1/4
1265' FNL
2451' FWL
LAT-40.49047°N
LONG-104.44216°W
PDOP: 4686
ELEV: 2.1'

40

BASHOR STATE AA16-03
NE1/4NW1/4
603' FNL
1874' FWL
LAT-40.49230°N
LONG-104.44413°W
PDOP: 2.2
ELEV: 4681'

41

BASHOR STATE AA16-02
NW1/4NE1/4
605' FNL
2045' FEL
LAT-40.49227°N
LONG-104.43989°W
PDOP: 2.2
ELEV: 4688'

42

BASHOR STATE AA16-17
SW1/4NE1/4
1345' FNL
1296' FEL
LAT-40.49022°N
LONG-104.43723°W
PDOP: 2.1
ELEV: 4687'

43

BASHOR STATE AA16-01
NE1/4NE1/4
654' FNL
584' FEL
LAT-40.49211°N
LONG-104.44564°W
PDOP: 1.6
ELEV: 4688'

44

BASHOR STATE AA16-08
SE1/4NE1/4
2084' FNL
659' FEL
LAT-40.48818°N
LONG-104.43496°W
PDOP: 1.6
ELEV: 4686'

48

BASHOR STATE AA16-05
SW1/4NW1/4
1991' FNL
556' FWL
LAT-40.48851°N
LONG-104.44911°W
PDOP: 1.4
ELEV: 4676'

49

BASHOR STATE AA16-20
SW1/4NW1/4
2379' FNL
1283' FWL
LAT-40.48744°N
LONG-104.44656°W
PDOP: 1.5
ELEV: 4677'

50

BASHOR STATE AA16-19
NE1/4NW1/4
1283' FNL
1395' FWL
LAT-40.49044°N
LONG-104.44597°W
PDOP: 1.7
ELEV: 4683'

51

GUNNER STATE AA16-99HZ
NW1/4NW1/4
1062' FNL
225' FWL
LAT-40.49107°N
LONG-104.45014°W
PDOP: 2.6
ELEV: 4683'

52

BASHOR STATE AA16-04
NW1/4NW1/4
667' FNL
500' FWL
LAT-40.49215°N
LONG-104.44908°W
PDOP: 1.6
ELEV: 4684'