

---

**WILLIAMS PRODUCTION RMT INC - EBUS**

---

**SP 342-14  
PARACHUTE  
Garfield County , Colorado**

**Cement Surface Casing**  
**08-Dec-2011**

**Post Job Report**

## The Road to Excellence Starts with Safety

Sold To #: 300721	Ship To #: 2860251	Quote #:	Sales Order #: 8542938
Customer: WILLIAMS PRODUCTION RMT INC - EBUS	Customer Rep: Shults, Mike		
Well Name: SP	Well #: 342-14	API/UWI #: 05-045-19714	
Field: PARACHUTE	City (SAP): PARACHUTE	County/Parish: Garfield	State: Colorado
Lat: N 39.438 deg. OR N 39 deg. 26 min. 17.02 secs.	Long: W 107.965 deg. OR W -108 deg. 2 min. 6.346 secs.		
Contractor: H&P 271	Rig/Platform Name/Num: H&P 271		
Job Purpose: Cement Surface Casing			
Well Type: Development Well	Job Type: Cement Surface Casing		
Sales Person: KOHL, KYLE	Srvc Supervisor: SLAUGHTER, JESSE	MBU ID Emp #: 454315	

## Job Personnel

HES Emp Name	Exp Hrs	Emp #	HES Emp Name	Exp Hrs	Emp #	HES Emp Name	Exp Hrs	Emp #
DOUT, JACOB J	13	430298	POLLACK, GARETH	13	498459	REEVES, BRANDON W	13	287883
SLAUGHTER, JESSE Dean	13	454315	SPARKS, CLIFFORD Paul	13	502476			

## Equipment

HES Unit #	Distance-1 way	HES Unit #	Distance-1 way	HES Unit #	Distance-1 way	HES Unit #	Distance-1 way
10867531	60 mile	10871245	60 mile	10989685	60 mile	11021972	60 mile
11027039	60 mile	11057893	60 mile	11360881	60 mile	11583931	60 mile

## Job Hours

Date	On Location Hours	Operating Hours	Date	On Location Hours	Operating Hours	Date	On Location Hours	Operating Hours
12-07-2011	2	0	12-08-2011	11	4			

**TOTAL** Total is the sum of each column separately

## Job

## Job Times

Formation Name	Top	Bottom	Called Out	Date	Time	Time Zone
Formation Depth (MD)			On Location	07 - Dec - 2011	17:00	MST
Form Type	BHST		Job Started	07 - Dec - 2011	22:00	MST
Job depth MD	2443. ft	Job Depth TVD	Job Started	08 - Dec - 2011	08:03	MST
Water Depth		Wk Ht Above Floor	Job Completed	08 - Dec - 2011	09:25	MST
Perforation Depth (MD)	From	To	Departed Loc	08 - Dec - 2011	11:00	MST

## Well Data

Description	New / Used	Max pressure psig	Size in	ID in	Weight lbm/ft	Thread	Grade	Top MD ft	Bottom MD ft	Top TVD ft	Bottom TVD ft
OPEN HOLE				13.5				.	2458.		
SURFACE CASING	Unknown		9.625	9.001	32.3			.	2443.		

Sales/Rental/3<sup>rd</sup> Party (HES)

Description	Qty	Qty uom	Depth	Supplier
PLUG,CMTG,TOP,9 5/8,HWE,8.16 MIN/9.06 MA	1	EA		

## Tools and Accessories

Type	Size	Qty	Make	Depth	Type	Size	Qty	Make	Depth	Type	Size	Qty	Make
Guide Shoe					Packer					Top Plug	9.625	1	HES
Float Shoe					Bridge Plug					Bottom Plug			
Float Collar					Retainer					SSR plug set			
Insert Float										Plug Container	9.625	1	HES
Stage Tool										Centralizers			

## Miscellaneous Materials

Gelling Agt	Conc	Surfactant	Conc	Acid Type	Qty	Conc	%
Treatment Fld	Conc	Inhibitor	Conc	Sand Type	Size	Qty	

## Fluid Data

Stage/Plug #: 1

Fluid #	Stage Type	Fluid Name	Qty	Qty uom	Mixing Density lbm/gal	Yield ft <sup>3</sup> /sk	Mix Fluid Gal/sk	Rate bbl/min	Total Mix Fluid Gal/sk
1	Water Spacer	FRESH WATER	20.00	bbl	8.33	.0	.0	4	
2	Lead Cement	VERSACEM (TM) SYSTEM (452010)	460.0	sacks	12.3	2.38	13.75	8	13.75
	13.75 Gal	FRESH WATER							
3	Tail Cement	VERSACEM (TM) SYSTEM (452010)	160.0	sacks	12.8	2.11	11.75	8	11.75
	11.75 Gal	FRESH WATER							
4	Displacement Fluid	FRESH WATER	188.7	bbl	8.33	.0	.0	10	
<b>Calculated Values</b>		<b>Pressures</b>		<b>Volumes</b>					
Displacement	188.7	Shut In: Instant		Lost Returns	NO	Cement Slurry	255.1	Pad	
Top Of Cement	SURFACE	5 Min		Cement Returns	50	Actual Displacement	188.7	Treatment	
Frac Gradient		15 Min		Spacers	20	Load and Breakdown		Total Job	464
<b>Rates</b>									
Circulating	10	Mixing	8	Displacement	10	Avg. Job	9		
Cement Left In Pipe	Amount	45 ft	Reason	Shoe Joint					
Frac Ring # 1 @	ID	Frac ring # 2 @	ID	Frac Ring # 3 @	ID	Frac Ring # 4 @	ID		
The Information Stated Herein Is Correct				Customer Representative Signature					

*The Road to Excellence Starts with Safety*

<b>Sold To #:</b> 300721	<b>Ship To #:</b> 2860251	<b>Quote #:</b>	<b>Sales Order #:</b> 8542938
<b>Customer:</b> WILLIAMS PRODUCTION RMT INC - EBUS		<b>Customer Rep:</b> Shults, Mike	
<b>Well Name:</b> SP	<b>Well #:</b> 342-14	<b>API/UWI #:</b> 05-045-19714	
<b>Field:</b> PARACHUTE	<b>City (SAP):</b> PARACHUTE	<b>County/Parish:</b> Garfield	<b>State:</b> Colorado
<b>Legal Description:</b>			
<b>Lat:</b> N 39.438 deg. OR N 39 deg. 26 min. 17.02 secs.		<b>Long:</b> W 107.965 deg. OR W -108 deg. 2 min. 6.346 secs.	
<b>Contractor:</b> H&P 271		<b>Rig/Platform Name/Num:</b> H&P 271	
<b>Job Purpose:</b> Cement Surface Casing			<b>Ticket Amount:</b>
<b>Well Type:</b> Development Well		<b>Job Type:</b> Cement Surface Casing	
<b>Sales Person:</b> KOHL, KYLE		<b>Srvc Supervisor:</b> SLAUGHTER, JESSE	<b>MBU ID Emp #:</b> 454315

Activity Description	Date/Time	Cht #	Rate bbl/min	Volume bbl		Pressure psig		Comments
				Stage	Total	Tubing	Casing	
Call Out	12/07/2011 17:00							TD 2458 FT, TP 2443 FT, SHOE 45 FT, CSG 9 5/8 IN 32.3 LB/FT, HOLE 13 1/2 IN, MUD WT 10 PPG
Pre-Convoy Safety Meeting	12/07/2011 19:50							WITH ALL HES PERSONNEL
Crew Leave Yard	12/07/2011 20:00							
Arrive At Loc	12/07/2011 22:00							RIG WAS RUNNING WIPER TRIP UPON HES ARRIVAL
Assessment Of Location Safety Meeting	12/08/2011 05:30							WITH ALL HES PERSONNEL
Other	12/08/2011 05:40							SPOT EQUIPMENT
Pre-Rig Up Safety Meeting	12/08/2011 05:50							WITH ALL HES PERSONNEL
Rig-Up Equipment	12/08/2011 06:00							
Pre-Job Safety Meeting	12/08/2011 07:50							WITH ALL PERSONNEL ON LOCATION
Start Job	12/08/2011 08:03							
Other	12/08/2011 08:03		2	2			85.0	FILL LINES WITH FRESH WATER
Test Lines	12/08/2011 08:05							TESTED LINES TO 3121 PSI PRESSURE HOLDING
Pump Spacer 1	12/08/2011 08:10		4	20			160.0	FRESH WATER
Pump Lead Cement	12/08/2011 08:18		8	195			470.0	460 SKS AT 12.3 PPG, 2.38 FT3/SK, 13.75 GAL/SK
Activity Description	Date/Time	Cht	Rate bbl/min	Volume bbl		Pressure psig		Comments

Sold To # : 300721

Ship To # :2860251

Quote # :

Sales Order # :

8542938

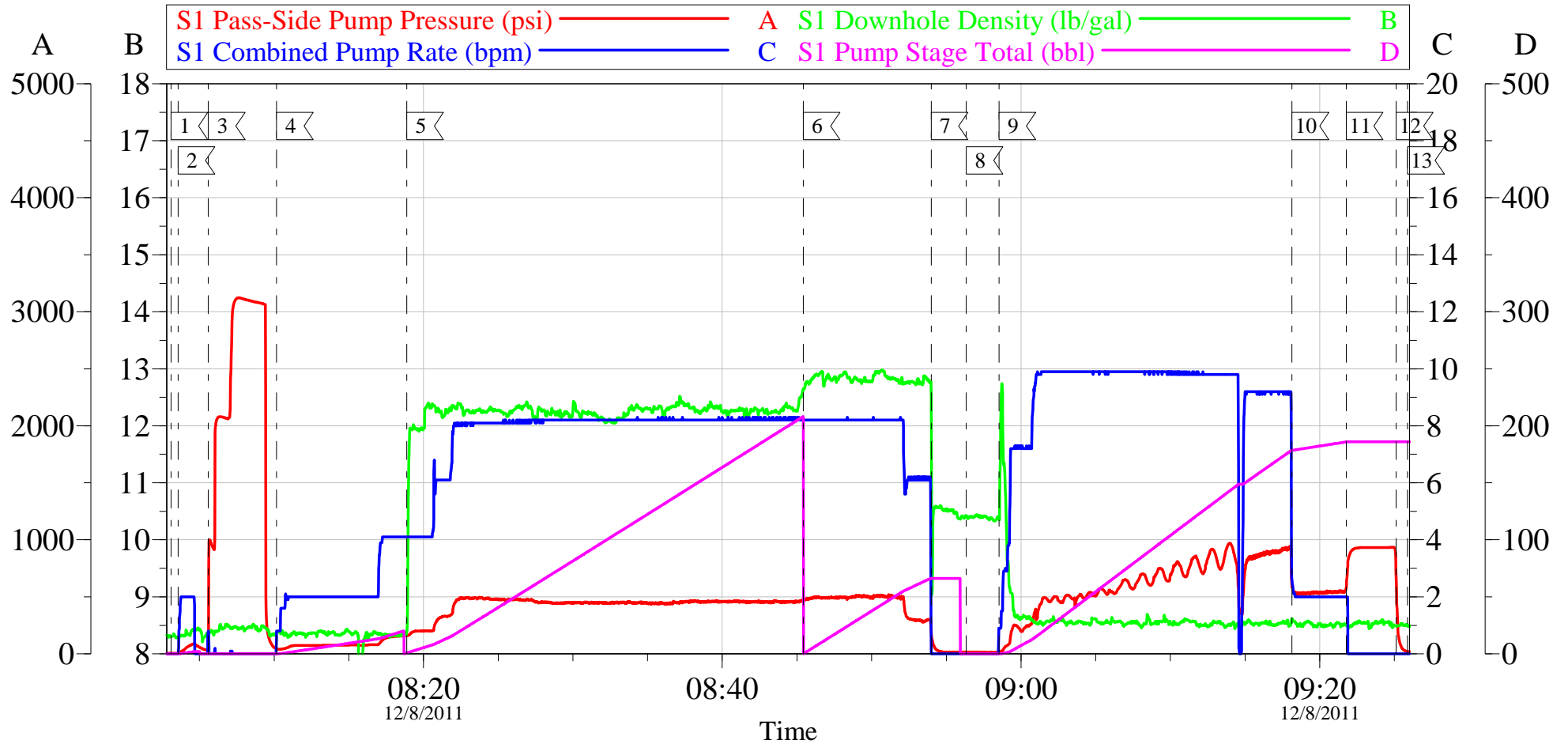
SUMMIT Version: 7.2.27

Saturday, December 10, 2011 01:58:00

		#		Stage	Total	Tubing	Casing	
Pump Tail Cement	12/08/2011 08:45		8	60.1			520.0	160 SKS AT 12.8 PPG, 2.11 FT3/SK, 11.75 GAL/SK
Shutdown	12/08/2011 08:53							
Drop Top Plug	12/08/2011 08:56							PLUG LAUNCHED
Pump Displacement	12/08/2011 08:58		10	178.7			950.0	FRESH WATER
Slow Rate	12/08/2011 09:18		2	10			550.0	SLOW RATE 10 BBLs PRIOR TO CALCULATED DISPLACEMENT
Bump Plug	12/08/2011 09:21		2	188.7			930.0	PLUG BUMPED
Check Floats	12/08/2011 09:25							FLOATS HOLDING. HES RETURNED 1 BBL H2O TO PUMP
End Job	12/08/2011 09:25							PIPE WAS RECIPROCATED DURING JOB, GOOD CIRCULATION THROUGHOUT JOB. HES RETURNED 50 BBL CEMENT TO SURFACE
Pre-Rig Down Safety Meeting	12/08/2011 09:30							WITH ALL HES PERSONNEL
Rig-Down Equipment	12/08/2011 09:35							
Pre-Convoy Safety Meeting	12/08/2011 10:50							WITH ALL HES PERSONNEL
Crew Leave Location	12/08/2011 11:00							
Comment	12/08/2011 11:01							THANK YOU FOR USING HALLIBURTON CEMENT DEPARTMENT. JESSE SLAUGHTER AND CREW.

# WILLIAMS SP 342-14

## 9 5/8 SURFACE



### Local Event Log

1 START JOB	08:03:06	2 PRIME LINES	08:03:34	3 TEST LINES	08:05:36
4 PUMP H2O SPACER	08:10:10	5 PUMP LEAD CEMENT	08:18:53	6 PUMP TAIL CEMENT	08:45:25
7 SHUTDOWN	08:53:59	8 DROP TOP PLUG	08:56:20	9 PUMP DISPLACEMENT	08:58:31
10 SLOW RATE	09:18:09	11 BUMP PLUG	09:21:47	12 CHECK FLOATS	09:25:07
13 END JOB	09:25:53				

Customer: WILLIAMS  
Well Description: SP 342-14  
Customer Rep: MIKE SCHULTZ

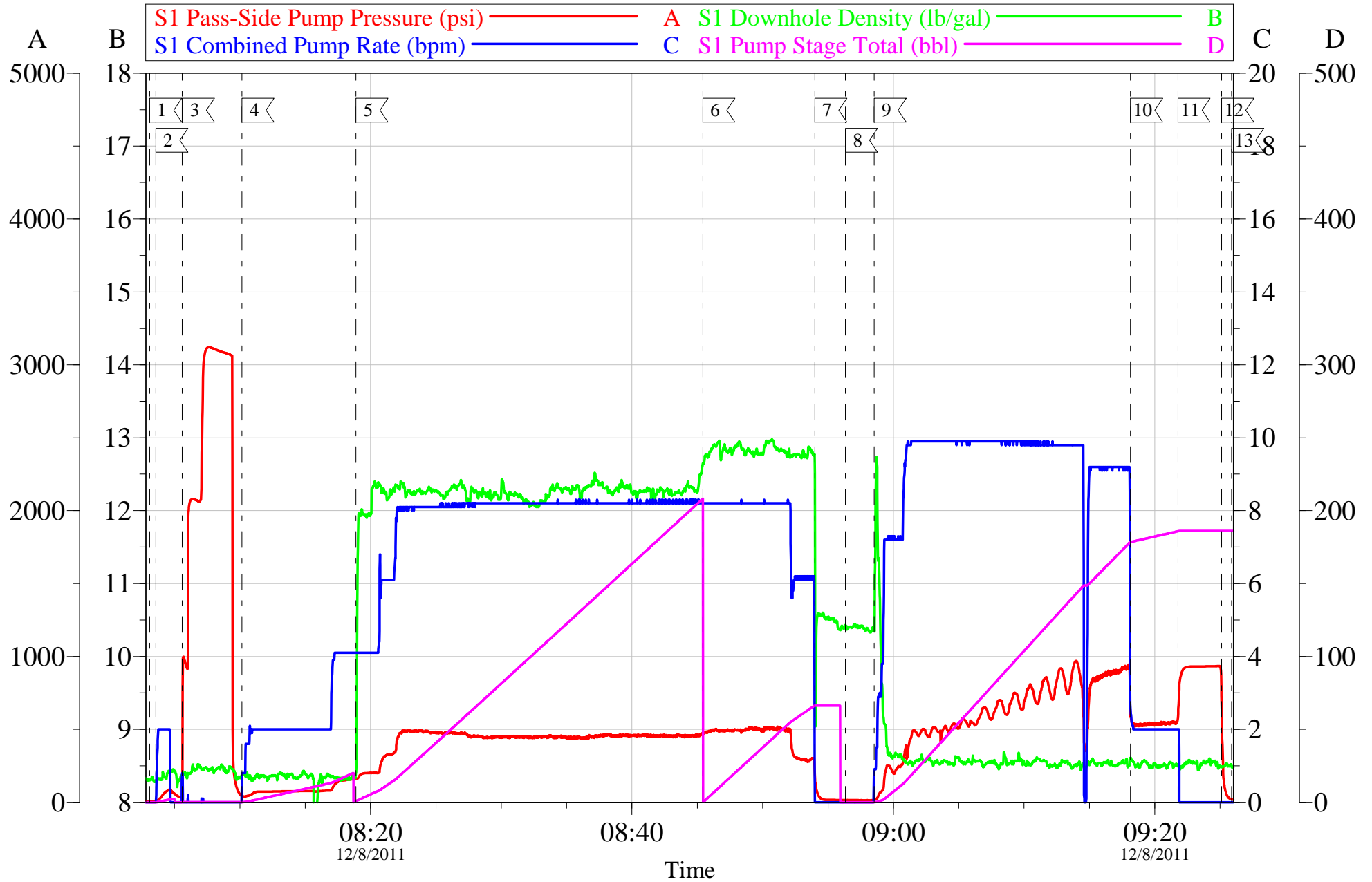
Job Date: 08-Dec-2011  
Job Type: SURFACE  
Cement Supervisor: JESSE SLAUGHTER

Sales Order #: 8542938  
ADC Used: YES  
Elite #4: JACOB DOUT

OptiCem v6.4.10  
08-Dec-11 09:36

# WILLIAMS SP 342-14

9 5/8 SURFACE



Customer: WILLIAMS	Job Date: 08-Dec-2011	Sales Order #: 8542938
Well Description: SP 342-14	Job Type: SURFACE	ADC Used: YES
Customer Rep: MIKE SCHULTZ	Cement Supervisor: JESSE SLAUGHTER	Elite #4: JACOB DOUT

OptiCem v6.4.10  
08-Dec-11 09:36

# HALLIBURTON

## Water Analysis Report

Company: WILLIAMS PRODUCTION

Submitted by: JESSE SLAUGHTER

Attention: LAB

Lease SP

Well # 342-14

Date: 12/7/2011

Date Rec.:

S.O.# 8542938

Job Type: SURFACE

Specific Gravity	<i>MAX</i>	<b>1</b>
pH	<i>8</i>	<b>6</b>
Potassium (K)	<i>5000</i>	<b>250</b> Mg / L
Calcium (Ca)	<i>500</i>	<b>120</b> Mg / L
Iron (FE2)	<i>300</i>	<b>0</b> Mg / L
Chlorides (Cl)	<i>3000</i>	<b>0</b> Mg / L
Sulfates (SO <sub>4</sub> )	<i>1500</i>	<b>UNDER 200</b> Mg / L
Chlorine (Cl <sub>2</sub> )		<b>0</b> Mg / L
Temp	<i>40-80</i>	<b>45</b> Deg
Total Dissolved Solids		<b>200</b> Mg / L

Respectfully: JESSE SLAUGHTER

Title: CEMENTING SUPERVISOR

Location: Grand Junction, CO

NOTICE:

This report is limited to the described sample tested. Any person using or relying on this report agrees that Halliburton shall not be liable for any loss or damage whether due to act or omission resulting from such report or its use.



<b>Sales Order #:</b> 8542938	<b>Line Item:</b> 10	<b>Survey Conducted Date:</b> 12/8/2011
<b>Customer:</b> WILLIAMS PRODUCTION RMT INC - EBUS		<b>Job Type (BOM):</b> CMT SURFACE CASING BOM
<b>Customer Representative:</b> MIKE SCHULTZ		<b>API / UWI: (leave blank if unknown)</b> 05-045-19714
<b>Well Name:</b> SP		<b>Well Number:</b> 342-14
<b>Well Type:</b> Development Well	<b>Well Country:</b> United States of America	
<b>H2S Present:</b> No	<b>Well State:</b> Colorado	<b>Well County:</b> Garfield

Dear Customer,

We hope that you were satisfied with the service quality of this job performed by Halliburton. It is the aim of our management and service personnel to deliver equipment and service of a standard unmatched in the service sector of the energy industry.

Please take the time to let us know if our performance met with your satisfaction. Please be as critical as possible to ensure we constantly improve our service. Your comments are of great value to us and are intended for the exclusive use of Halliburton.

### CUSTOMER SATISFACTION SURVEY

CATEGORY	CUSTOMER SATISFACTION RESPONSE	
Survey Conducted Date	The date the survey was conducted	12/8/2011
Survey Interviewer	The survey interviewer is the person who initiated the survey.	JESSE SLAUGHTER (HB21762)
Customer Participation	Did the customer participate in this survey? (Y/N)	Yes
Customer Representative	Enter the Customer representative name	MIKE SCHULTZ
HSE	Was our HSE performance satisfactory? Circle Y or N	Yes
Equipment	Were you satisfied with our Equipment? Circle Y or N	Yes
Personnel	Were you satisfied with our people? Circle Y or N	Yes
Customer Comment	Customer's Comment	

<b>CUSTOMER SIGNATURE</b>
---------------------------

<b>Sales Order #:</b> 8542938	<b>Line Item:</b> 10	<b>Survey Conducted Date:</b> 12/8/2011
<b>Customer:</b> WILLIAMS PRODUCTION RMT INC - EBUS		<b>Job Type (BOM):</b> CMT SURFACE CASING BOM
<b>Customer Representative:</b> MIKE SCHULTZ		<b>API / UWI: (leave blank if unknown)</b> 05-045-19714
<b>Well Name:</b> SP		<b>Well Number:</b> 342-14
<b>Well Type:</b> Development Well	<b>Well Country:</b> United States of America	
<b>H2S Present:</b> No	<b>Well State:</b> Colorado	<b>Well County:</b> Garfield

### KEY PERFORMANCE INDICATORS

General	
<b>Survey Conducted Date</b> The date the survey was conducted	12/8/2011

Cementing KPI Survey	
<b>Type of Job</b> Select the type of job. (Cementing or Non-Cementing)	0
<b>Select the Maximum Deviation range for this Job</b> What is the highest deviation for the job you just completed? This may not be the maximum well deviation.	Vertical
<b>Total Operating Time (hours)</b> Total Operating Hours Including Rig-up, Pumping, Rig-down. Enter in decimal format.	4
<b>HSE Incident, Accident, Injury</b> HSE Incident, Accident, Injury. This should be recordable incidents only.	No
<b>Was the job purpose achieved?</b> Was the job delivered correctly as per customer agreed design?	Yes
<b>Operating Hours (Pumping Hours)</b> Total number of hours pumping fluid on this job. Enter in decimal format.	4
<b>Customer Non-Productive Rig Time (hrs)</b> Lost time due to Halliburton in the start, execution, or completion of an ordered service or product, or delays in a follow-on service. Enter in decimal format. 0 if none.	0
<b>Type of Rig Classification Job Was Performed</b> Type Of Rig (classification) Job Was Performed On	Drilling Rig (Portable)
<b>Number Of JSAs Performed</b> Number Of Jsas Performed	6
<b>Number of Unplanned Shutdowns</b> Unplanned shutdown is when injection stops for any period of time.	0
<b>Was this a Primary Cement Job (Yes / No)</b>	Yes

<b>Sales Order #:</b> 8542938	<b>Line Item:</b> 10	<b>Survey Conducted Date:</b> 12/8/2011
<b>Customer:</b> WILLIAMS PRODUCTION RMT INC - EBUS		<b>Job Type (BOM):</b> CMT SURFACE CASING BOM
<b>Customer Representative:</b> MIKE SCHULTZ		<b>API / UWI: (leave blank if unknown)</b> 05-045-19714
<b>Well Name:</b> SP		<b>Well Number:</b> 342-14
<b>Well Type:</b> Development Well	<b>Well Country:</b> United States of America	
<b>H2S Present:</b> No	<b>Well State:</b> Colorado	<b>Well County:</b> Garfield

Primary Cement Job= Casing job, Liner job, or Tie-back job.	
<b>Did We Run Wiper Plugs?</b> Did We Run Top And Bottom Casing Wiper Plugs?	Top
<b>Mixing Density of Job Stayed in Designed Density Range (0-100%)</b> Density Range defined as +/- .20 ppg. Calculation: Total BBLs cement mixed at designed density divided by total BBLs of cement multiplied by 100	92
<b>Was Automated Density Control Used?</b> Was Automated Density Control (ADC) Used ?	Yes
<b>Pump Rate (percent) of Job Stayed At Designed Pump Rate</b> Pump Rate range defined as +/- 1bbl/min. Calculation: Total BBLs of fluid pumped at the designed rate divided by Total BBLs of fluid pumped, multiplied by 100	92
<b>Nbr of Remedial Sqz Jobs Rqd - Competition</b> Number Of Remedial Squeeze Jobs Required After Primary Job Performed By Competition	0
<b>Nbr of Remedial Plug Jobs Rqd - HES</b> Number Of Remedial Plug Jobs Needed After Primary Plug Pumped By HES	0
<b>Nbr of Remedial Sqz Jobs Rqd - HES</b> Number Of Remedial Squeeze Jobs Required After Primary Job Performed By HES	0